

# Reporter

May 23, 1975



Clambake II

# Reprofile

Nearly 1500 people ate platefulls of clams, listened to music and broiled with sunburn, last Sunday at Clambake II.

According to Hiram Bell, SA President, \$1,000 in additional funds from SA will be added to the total expenditure for the event. He added, that despite the controversy and the hassles of programming Clambake II, that "our loss was not as large as I honestly expected."

The Clambake continuing its second year of existence is becoming an RIT tradition and one of the few events at which students, staff, faculty and administrators can socialize. One tradition, Spring Weekend was not revived this year, and Clambake II functioned as the only large scale entertainment on campus in the spring. Traditions seem to be hard to start and even harder to keep.

This year, individuals from College Union Board, Residence Halls Association and the Greek Council did help organize the Clambake, though SA retained financial and organizational responsibility for the event.

As Bell had previously explained, SA will never program an entire Clambake again. SA's funding of the event is a possibility, but the planning of a social event is not the

responsibility of SA. True programming groups such as CUB, RHA or Greek Council could organize an effective Clambake next year, with help from SA if there is support from the RIT community.

Bell as well as others agreed that the planning "was rather haphazard at best." An activity of Clambake's size requires a great deal of advance planning, longer ticket sales, and better promotion, to increase the number of persons attending and reduce the cost per ticket.

With 1500 people attending a widely recognized, "overpriced event," it appears evident that on a sunny day in Rochester anything is possible; students, faculty and staff can socialize here on campus.

Now, after two years of experience, if Clambake III becomes a reality again, perhaps the snarls of politics and personalities will leave the air. Next year, if a few organizations plan another Clambake or outdoor spring festival, the serious business of finance and publicity will be straightened early, and they can offer an event "just for the hell of it" that people can enjoy.

*Diane B. Snow*

# Notes

This past Monday the Student Association Senate established two Senate seats for students from the college of NTID, (one of the points on the Bell-Woodhall platform) and three positions for Senators-at-large, representatives from any college.

Of particular interest to the entire staff at *Reporter*, was the SA allocation, at the same meeting, of \$7,800 over a three year period to *Reporter*, for long needed new typesetting equipment. The SA commitment constitutes a large portion of the cost of the new photo typesetting equipment.

Our new system will offer an increased resume service to students, typesetting at a reduced cost to organizations on campus, and a higher quality magazine for the RIT community.

Page two and Scoreboard, this week, are set with a typeface available on *Reporter's* new typesetting equipment.

For the last two quarters *Reporter* has been allowed to use equipment at the Graphic Arts Research Center, for a temporary backup typesetting operation. Without their assistance, it would have been impossible to publish *Reporter*. In addition, this week's issue with "spot color" is printed with special cooperation from GARC.

# Contents

Vol. 51 Number 29  
May 23, 1975

<b>Feature</b> .....	<b>3</b>
Designers Seek Change	
<b>Reportage</b> .....	<b>4</b>
Bicycle Thieves Foiled	
Summer Housing Available	
Baldwin Plaque Dedicated	
<b>Reprodepth</b> .....	<b>8</b>
New Pro Services Director-Allen	
Finances for Procrastination	
The Morning After Pill	
<b>Scoreboard</b> .....	<b>10</b>
RIT Baseballers Close	
Tiger Netmen Face Roberts	
Golfers Finish 8-4	
<b>Reproview</b> .....	<b>12</b>
"Hearts and Minds"	
"Guys and Dolls"	
<b>What's Happening</b> .....	<b>14</b>

# Reporter Magazine

Editor in Chief-Diane B. Snow  
Executive Editor-Thomas R. Temin  
Managing Editor-Noel V. Coletti

<b>News Editor</b>	James McCarthy	<b>Composers</b>	Jan Kobryn Sue Lewis	
<b>Cultural Editor</b>	R. Paul Ericksen	<b>Writers</b>	Bill Lampeter Peter Schreiber Charles Borst Debbie Bathen Jim McNay Amy Cullen Linda Werth	
<b>Sports Editor</b>	Ronald Tubbs			
<b>Copy Editor</b>	Leigh Lutz			
<b>Photography Editor</b>	Greg Heisler			
<b>Photographers</b>	Jim Weiland Leonard Kaltman Zane Berge Brian Peterson Skip Evans Joe Garrapolo Paul Hames Eileen Vliet			
<b>Production Manager</b>	Ted Braggins		<b>Artists</b>	Brian Sullivan Jack Locastro Dana Whittle Rick Weiss Marty Russell
<b>Production</b>	Melissa Katzman Bert Luis		<b>Business Manager</b>	Cathy McLaughlin
<b>Distribution</b>	Jim Compton Louis Lepis Jim Phillips		<b>Student Consultants</b>	Pete BeVard Geoff Lewis
<b>Advertising Manager</b>	Dan Stern		<b>Consultant</b>	Mark F. Guildin
<b>Advertising</b>	Kevin Kelly Larry Stein		<b>Advisor</b>	Thomas J. O'Brien
		<b>Cover</b>	Andrew Franklin	

Reporter Magazine is published weekly by students of the Rochester Institute of Technology, One Lomb Memorial Drive, Rochester, New York 14623. Editorial and production facilities are located in room A-238 of the RIT College Union, phone 464-2212. The opinions expressed in Reporter do not necessarily reflect those of the Institute community. Reporter Magazine takes pride in its membership in the American Civil Liberties Union.

# Designers Seek Change

BY ANDREW FRANKLIN



Deep and widespread dissatisfaction among seniors in the Communications Design department of the College of Fine and Applied Arts has recently been expressed emphatically to Institute officials outside the department.

A teacher/course evaluation survey distributed throughout the class by students early this quarter has been compiled into a 19-page document of comments and statistics and sent to Dr. Todd Bullard, Provost. The survey format was identical to the college's standard course evaluation questionnaire. Accompanying the survey results was a letter signed by all 32 members of the Communication Design senior class, urging Bullard to take "remedial action." Copies were also sent to Dr. Fred Smith, Vice-President for Student Affairs, Dr. Robert Johnston, Dean of the College of Fine and Applied Arts, Roger Remington, Chairman of the Department of Communication Design, and James Bare, instructor of the senior class.

Class members took this unusual action after encountering frustration in obtaining constructive response to their grievances within the department. A survey would have normally been taken at the end of the year, but as one student said, in such a case, "No one else would have seen it; it wouldn't have been taken seriously."

Much of the evaluation focused on James Bare's performance as an instructor, and this writers' conversations with many seniors underlined this as the central source of dissatisfaction. Statistical information in the survey results revealed that the instructor's use of class time, his empathy with students and his openness to other points of view were notable problem areas. Many felt that the scope of the course

was limited, and gave poor ratings to critiques, lectures and class discussions. 62 percent of those responding rated the instructor as "one of the least effective" they have had at RIT.

Bare himself, in a class meeting called several days after he received the document, conceded that perhaps he had done a "bad job communicating to students what we are trying to do." He expressed regret that his motives as a teacher were "misinterpreted" by his class, and reiterated that he was a strict teacher who "demanded quality." When asked to speculate on the source of class dissatisfaction, he cited the "pressure" the students were under, and added that "they overreacted a bit." Bare went on to characterize the year as "one of the best we've had," though he granted that 50 percent of the class received D or F midterm grades this quarter.

Robert Johnston, Dean of the College, was out of town as the events unfolded, but Associate Dean Peter Giopolus, in a brief appearance before the class, stressed his support of the instructors and defended the department as a "damn good" one. Later, in a discussion, Giopolus, a RIT graduate who is finishing his first year as Associate Dean, stressed that "we are constantly evaluating" programs, and downplayed the significance of the survey results. Giopolus said, "It is the nature of the artist to criticize," and he pointed out that the college's evaluation of a department is based on input from teachers, alumni and visitors as well as students, and he based his defense of Communication Design on such input. However, he refused to provide documentation of specific examples of such feedback, and declined to reveal employment statistics for graduates of the department.

One graduate, who had been a straight-A student and is now creative director and vice-president of his own design studio in Rochester, echoed the concerns of the 1975 class. He stated that "students are learning to be technicians rather than creative designers." Familiar with many people in the professional design community in Rochester, he speculated that "it would be a cold day in hell before many would hire an RIT student."

A problem perceived on all sides was the size of the class itself, creating an unsatisfactory teacher/student ratio. The senior class now stands at 32 (down from 36 at the beginning of the year), and that number is expected to increase to 40 next year. No immediate plans exist to add faculty or supplement the already overcrowded facilities. Many students question the ability of Bare, who came straight to his current job from grad school, to handle such a large class effectively.

Dr. Bullard, after reading the survey results, expressed his intent to meet students, faculty and administrators of the college to discern "the nature of the problem," and speculated that a response by Dr. Johnston might be forthcoming by midsummer. The ultimate outcome of the seniors' actions, and their potential repercussions on ongoing efforts to establish Institute-wide teacher evaluation, are unclear. It is still too early to tell if they will get the "remedial action" they seek.

# Reportage



Ron Markwart and daughter clowning at Clambake II.

## Bicycle Thieves Foiled

Charges have been brought against an individual apprehended by Protective Services at approximately 12:50 am on May 14, caught in the removal of four ten speed bicycles from the area near Phi Sigma Fraternity. The stolen property may be valued at over \$500.

"At least one, if not two persons are thought to be responsible for the theft" commented William Allen, director of Protective Services. A resultant high speed chase on John Street lead to the individual's subsequent referral to the Monroe County Sheri Sheriff's Department for prosecution.

## Summer Housing Available

Students who will be living on campus this summer will be housed in Kate Gleason Hall, said James Fox, director of Housing. "There is a planned action to paint 300 rooms and a five to six page document on repairs and clean-up to be done before Fall quarter," report-

ed Fox. Resident directors will tour their areas and note the places that will require work this summer.

Sol Heumann Hall and Nathaniel Rochester Hall will be closed to be fixed this summer. Fox said that building usage is rotated every summer so that the empty buildings may be worked on.

Jo Ann Buck is the director of summer housing.

RIT students attending summer session or summer quarter classes, planning to live in the Residence Halls, must complete a Housing contract at the Housing Office in Grace Watson Hall, on or before May 27.—*B. Lampster*

## CUB Survey Gets Results

The College Union Board announced the results of its survey published in the April 25 edition of *Reporter*. The top six groups that recieved the most votes (over ten) are "financially out of reach" according to the survey results. Among the popular performers that the Board can afford to bring to RIT are Harry Chapin, B.B. King, Tower of Power, and Jose Feliciano.

Some of the most popular speakers include Rod Serling, Jean Shepherd, and Al Goldstein.

Oktoberfest, ice cream give-aways, and outdoor horror movies rated among the most popular events.

For the Theatre category, Shakespeare, musicals, and the Country Music Festival are the most popular.

Favorite movies include *Blazing Saddles*, *The Sting*, as well as Bogart, Hitchcock, and Chaplin features.

—*T. Temin*

## Baldwin Plaque To Be Dedicated

On Monday, June 2, 1975, a plaque honoring the late biology professor David Baldwin will be unveiled in room 1250 of the Science Building. Baldwin was murdered at home in January.

The plaque will be unveiled by Dean Thomas A. Wallace of the college of Science, who will make short remarks.

The 16 by 19 inch brass plaque was specially designed by SAC professor Hans Christiansen. Over a background depicting a cell, it reads, "In Memory of David M. Baldwin, 1910-1975, Proffessor of Biology." All are invited to the ceremony.

## Mike Gross New RD for Heumann

Mike Gross from George Washington University in Washington DC will report on August 1 to the position of resident director for Sol Heumann Hall, replacing George Beard. Gross is a native of New Hampshire who claims to "look forward to working with RIT students."

He was one of six finalists chosen from over 200 resumes from persons in contention for the job. James Fox, director of Housing, says that "we have stacks of resumes from people looking for jobs."

Fox met Gross in Atlanta, Georgia, while at a convention for Housing. Fox and other members of his department attend conventions to learn more about their business and to interview persons seeking jobs in the housing and food service fields.—*B. Lampeter*

## Graduation Schedule Set

On Saturday, June 7, the 1975 Commencement Ceremonies will be held on the Henrietta Campus. The schedule of times and places is as follows:

College of Continuing Education (blue color coded ceremony) begins at 9:00 am in the Frank Ritter Memorial Ice Arena. The College of Engineering and General Studies (yellow color coded ceremony) will be held in the George H. Clark Memorial Gymnasium at 9:00 am. The College of Business (red color coded ceremony) will be in the Ritter Ice Arena at 11:30 am. The College of Fine and Applied Arts and Science (green color coded ceremony) will be in the Clark Gymnasium at 11:30 am. The College of Graphic Arts and Photography (orange color coded ceremony) will be in the Ice Arena at 2:30 pm. The Institute College and the National Technical Institute for the Deaf (brown color coded ceremony) will be in the Gymnasium at 2:30 pm.

Caps and gowns are mandatory for all students graduating. Students who do not have their own caps and gowns may pick them up in the 1829 Room in the College Union from June 3 to June 6. More information regarding caps and gowns may be obtained from the RIT Bookstore (extension 2502). Rehersals will be on June 6 at 2:00 pm in designated areas according to color codes for each College. —*D. Bathen*

**BILL THYGESEN'S  
TOWING SERVICE,  
INC.**

1220 Brighton Henrietta  
Town Line Road

**24 HR. PHONE  
473-2150**

COMPLETE  
AUTO/TRUCK  
REPAIRS

COLLISION AND DOLL  
UP SHOP

**10 % off** service  
with this ad and an RIT ID

**Man's World**  
*of Hair Design*

**Precision cutting  
and blow waving  
for  
men and women**

1564 Jefferson Road  
Rochester, New York  
244-9230



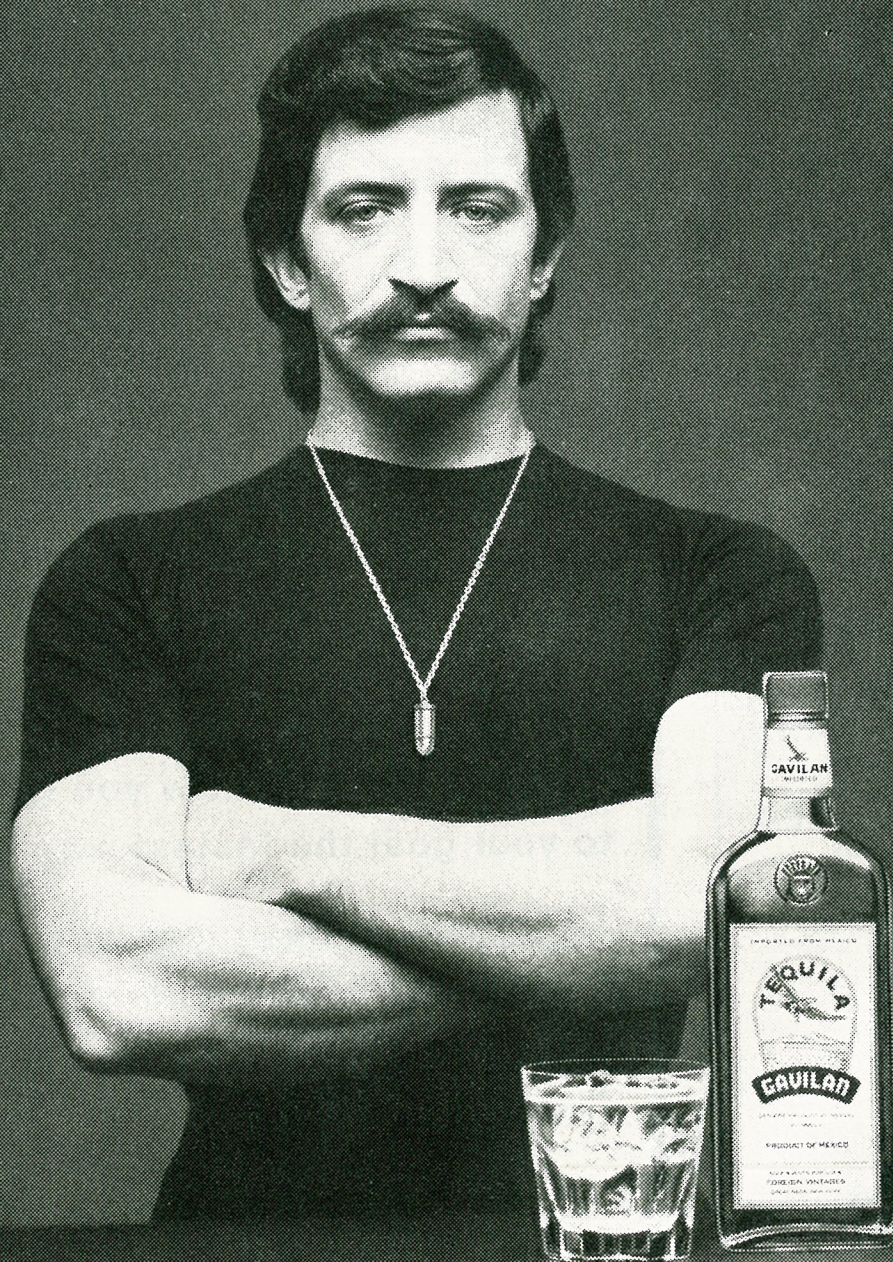
**Man's  
World**



**Everyone has a direction in life.  
Army ROTC can show you how to get  
to your goal the fastest way.**

**Find out the best way to get where  
you're going through Army ROTC. Call  
us at 464-2881, or visit us on the 5th  
floor, main Administration Building.**

**Tequila Gavilan.<sup>®</sup>  
One taste...and  
you're not a Gringo  
anymore.**



Mexico's classic tequila is Numero Uno in N.Y.

80/86 Proof. Imported by Foreign Vintages, Inc. Great Neck, New York 11021. © 1975

# The Gavilan®.45

It can end your boredom



## The Gavilan .45

1 1/2 oz. Gavilan Tequila  
(at least)  
About a Half Can of Beer  
Some Salt

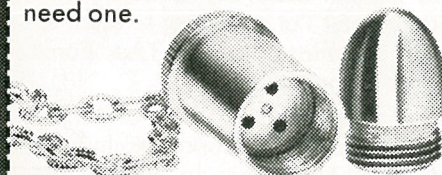
Load a glass with ice.  
Pour in the Tequila.  
Top off with beer.  
Shake on a little salt... and sip.  
Bang! Goes the Gavilan .45.

Want your own bullet cleverly  
disguised as a salt shaker?  
It's shiny nickel plated brass  
with a 27" chain.

Offer void where prohibited by law.  
80/86 Proof. Imported by Foreign Vintages, Inc.  
Great Neck, New York 11021. © 1975

Send \$3.00 to:  
Gavilan .45  
P.O. Box 33  
Brooklyn, New York 11232.  
You never know when you'll  
need one.

M



NAME \_\_\_\_\_

ADDRESS \_\_\_\_\_

CITY \_\_\_\_\_

STATE \_\_\_\_\_ ZIP \_\_\_\_\_

# Reprodepth



## New Pro Services Director - Allen

I'm more interested in private security and not public law enforcement, in a community rather than an industrial setting," said William Allen, the new director of Protective Services.

Allen arrived at RIT on April 28, and at a recent interview he was still trying to learn about RIT policies and procedures: "I feel a little like a sponge because I have been absorbing a lot of information," he offered.

From his own observations, Allen feels that parking is a major problem at RIT, and one that he will work on immediately. "We already have in existence, a traffic office which will deal with parking," continued Allen, "I want to develop that, . . . It seems that with the problem of parking at RIT, there has to be authority within Protective Services."

Allen admitted that he has not made any definite policy changes in the area of parking yet, "I'm just trying to catch up on what the Traffic Review Committee and the TAsk Force Parking Committee have already done."

Allen was the Director of Security for Alfred University before his position at RIT. At Alfred he worked exclusively with student personnel guards. Allen plans to increase the number of student staff workers here and commented, "Students provide good informal lines of communication with Security and the people on campus." He added, "of course a full time security staff is important for the experience they add. . . also, a full time security staff helps you overcome scheduling problems in having students."

Allen, a politician in his new position, carefully worded his comments, and added that many areas at RIT are new to him.

Currently, Allen is living in the Residence Halls, during the week, and commuting to Alfred, where his family still lives. He plans to make Rochester his permanent home in the near future.

## Finances for Procrastinators

Suppose your funds are running low; you have little or no chance for summer employment, but you wish to return to school this fall. Suddenly the realization seizes that you have missed the deadline in filing for the parent's confidential statement (March 1) and the basic educational opportunity grant (March 17), both of which form the substantial substance of the financial aid package. What do you do?

"By all means, file the statements," encouraged Douglas Hoover, director of Financial Aid. Although earlier applicants have been considered in the initial viewing, residual funds commonly found in new scholarship creations and in funds made available by students renigging upon their original consent to receive aid, are available to the late applicant. Bank loans, separate individual student statements as well as personal interviews with the office constitute further avenues of application.

Working on a year round basis, the financial aid department's endeavor to enable students to continue their education at RIT never ceases, said Hoover. "In fact, we never seem to enjoy a slack period," he continued.

The basic financial package offered to most students consists of the national defense student loan, the basic educational opportunity grant, and a work-study supplement contingent upon at least a 3.2 or better average. Awarded basically upon the evaluation of financial status received in the parents' statement, deadline observation is imperative as the aid office services close to 2500 students each year. Those allocated aid are generally middle class with over 50 percent attending RIT coming from families of \$12,000 or less income. The funding is allotted to those with the lower incomes first, and then traveling up the ladder to those more comfortably monied. Statistically, the average incoming freshman is supplemented \$2950 his first year.

"I kind of sit there and put the pieces of a pie back together," remarked Hoover, contending not only with the time elemented schedule, but also with the constant updating of resources and funds. Most recently, RIT has been bequeathed the C. B. Beal endowment fund of \$529,000 from which additional awards will be drawn. Likewise, the basic opportunity grant involves constant attention as the phasing in process by which it is being adopted has been gradually accruing from the original maximum of \$1050 in 1973 to \$1400. This resource which will be available to freshmen, sophomores, and juniors this year and to seniors the following year couples with the additional gift made possible in the \$118,000,000 Emergency Employment Act.

Loans form a major role in the department's disbursement of funds and serve as "an investment in yourself". Citing the



US Bureau of Labor Statistics which reported that the average college graduate earns \$260,000 or more than the high school worker in his labor lifetime, Hoover views the acceptance of a loan as a fortuitous investment and as an expedient to higher education. This is but one avenue open to the financially needy student.

Although RIT prices are competitive with other schools offering similar programs (i.e. Syracuse - \$5500/year and RIT \$5150/year), and although the double digit increases of the present economy seek to cloud the opportunities available to educationally desiring college graduates and undergraduates, RIT's financial aid office affords some shelter. Qualifying their awards upon a parent's monetary position, a student's statement and need, and upon the personal judgement of the administrative reviewer, help can be extended, even to those perennially absent-minded and rushed. —L. Lutz

## The Morning After Pill

The Federal Food and Drug Administration has issued regulations governing limited use of DES (diethylstilbestrol) or the "morning after" pill. The DES pill is used mainly for emergencies, and is not issued to women as a regular method of birth control. DES contains an unusually high amount of estrogen, 25 milligrams. Most daily birth control pills contain only one to two milligrams. DES is usually taken 72 hours after intercourse twice daily for 5 days, along with an anti-nausea drug.

Obtaining DES is a long process. A woman must have a complete physical examination, a pregnancy test, pap smear, breast and pelvic examination and a review of her personal and family medical history. Physicians forewarn their patients as to the potential hazards of taking this drug. Abortions are suggested to women if the pill fails to prevent the pregnancy.

In a recent interview, Dr. Sherman (gynecologist at RIT), said DES is issued to students. Dr. Sherman stressed the fact that a woman must be fully aware of what the consequences of taking DES are. If a student is willing to have an abortion if the pill doesn't work, then she can have them. If not, no DES.

In recent years, the DES pill has been the subject of controversy among critics. During the '40's and '50's when DES was first used, experimentation was done on the very young and poor. The pill was mainly used as an "anti-miscarriage" drug. Female children of the early DES users are now reaching puberty, which is a reason for recent controversy. The major fear of most critics is that DES daughters "will have an increased risk of cancer of the vagina or cervix later in life." A study by Dr. Anne P. Lanier on 818 DES daughters pinpointed the risk factor of cancer no greater than 4 per 1,000. In yet another study by Dr. Arthur L. Herbst in March of 1975, found a high incidence of glandular irregularity, especially in the uterus.

Critics have also charged that there is not only a danger to the unborn child, but also that large doses of estrogen can cause cancer to the woman using DES.

Most physicians feel that there is not enough information to prove or disprove the effects of DES on users and their children.

Senators Richard Schweiker, and Edward Kennedy (D-Mass), have introduced a bill to ban the use of DES for at least one year. They claim that DES should not be used as indiscriminately as it has been on some college campuses.

In February of this year, the National Cancer Institute awarded 1.5 million dollars to study vaginal cancer and other noncancerous genital tract irregularities. Five medical centers throughout the country will study the effects of DES on women and their children. —D. Bathen

## Expansion of Counseling Services

In the "let's get out of the office" syndrome of the riot-ridden student-riddled 60's, RIT's counseling center has in the past three to four years been gradually expanding the range and scope of programs offered. These programs, according to Joe Hauser, a clinical psychologist on a staff of ten have necessitated the addition of personnel. While retaining their personal therapy and counseling facilities, the service has broadened to now encompass outreach programs involving group participation.

Broadly stated as the Human Resources Series, the classes have absorbed the influx of staff more immediately involved in the "counselors in the community" approach. Hauser commented that the seminars involve those desiring to understand themselves better, desiring to overcome normal, ordinary problems. The Counseling Center also offers more traditional services. The following are examples of typical concerns: sexual identity, inter-personal difficulties, psychological stresses, test-taking and study difficulties, marriage and family problems, and loneliness.

Depression and loneliness are perhaps the two single, largest reasons for referral, however. The lousy weather of winter, the lack of breaks during the quarter, and the "year's blahs" single out winter as one of the center's busiest stretches..

Approximately 600 students or ten per cent of the RIT populace are engaged in personal or career counseling each year, with those participants in group programming increasing the flow. They follow essentially the same procedures outlined in the center's brochure: "In the first counseling interview the student is encouraged to talk freely about his concerns or to state the kinds of questions which have moved him to seek counseling. The counselor and the student then decide upon appropriate next steps. Sometimes testing of interests, abilities, aptitudes and personality characteristics appears desirable; if so, at least one follow-up interview is required. Sometimes further interviews are scheduled to help students clarify their thinking or feelings, or to consider alternative courses of action. Depending on their questions, students may see a counselor for a few minutes or up to an hour; one visit or many, over a period of weeks if necessary.—L. Lutz

# Scoreboard



Tiger second baseman Dave Stackwick was hot against Hobart last week, going 7-10 at the plate

## RIT Baseballers Close at 7-11

Baseball ended its 1975 season by winning both ends of a double header against Hobart, 4-3 and 14-0. The pair of victories closes the season record at 7-11. For Coach Bruce Proper's veteran team the season was certainly far less successful than expected. This was a team with the potential to be the best in RIT's history, but it never realized that potential.

Hobart had a generally weak team with the exception of hitting. Most teams gave up at least six runs to Hobart, but they would still win. Bernie Putano pitched his best game all season with a shut out going all the way to the sixth inning before he gave up a hit.

RIT had a field day at the plate. Shortstop Greg Schuber hit his first homerun of the season by going seven for ten. That hitting streak earned him Athlete of the Week honors. Third baseman Scott Makela closed out his career with several school records including smashing the extra base record. Scott Makela and Scott Dodgson both hit over .380 for the season and have been in the eyes of several pro-scouts.

Aside from a few outstanding performances, the season leaves little that is noteworthy. The team record is not impressive. As a matter of fact it is rather depressing considering some of the team's strengths, namely one of

the best infields, defensively, in the state. What should have been a strong, deep hitting team proved to be shallow. The pitching staff was supposed to be lacking depth but that was never the problem. It was just lacked wins.

Coach Proper attributed the lack of success to one bad break after another. A team makes its own luck and good breaks and that is where RIT lost games. They did not make their own luck. —*P. Schreiber*

## Tiger Netmen Face Roberts

Bob Witmeyer's tennis squad will end its 1975 season Saturday with a match against Roberts Wesleyan here at 1:00 pm.

The Tigers faced Houghton here last week and came away with an easy 9-0 win. In doubles Jeff Begoon and Greg Slopey upped their season record to 6-0, while in singles they each hold 7-2 marks. RIT's number one singles player, George Peirson, is 7-4 and his doubles partner, Rookie Schmidt, is 8-4 in singles matches. The Pierson-Schmidt duo boasts a 7-3 doubles record.

RIT's two losses this year were early in the campaign to Ithaca 7-2 and Hobart 8-1. Witmeyer's squad placed fifth in the ICAC Championships last month. Since then the netmen have mowed down five straight opponents: Eisenhower, Canisius, Alfred, Hartwick, and Houghton.—*R. Tubbs*

## Golfers Finish 8-4 in Duals

Closing out their 17th straight winning dual meet season at 8-4, with three wins last week, Coach Fuller's golfers are hoping for post season play. The Tigers failed to win a tournament, but they posted a perfect 5-0 record in ICAC competition.

Monday RIT traveled to Utica for the District II NCAA's June 10-13 at the University of Tennessee-Martin

Senior Steve Shepard leads the linksmen on the year with an 80.9 average. In tournament play sophomore Steve Wratny is pacing the Tigers at 79.5 while captain Bruce Paton boasts an 80.3 dual meet average.

### SCOREBOX

#### BASEBALL

May 12

RIT 1,0  
Cornell 3,2

May 17

RIT 4,14  
Hobart 3,0

#### LACROSSE

May 17

RIT 15  
Eisenhower 2

#### GOLF

May 12 Gannon Invitational

RIT 393  
Youngstown 385  
Gannon 374

May 13

RIT 391  
U of R 416

May 16

Alfred 414  
RIT 391  
Hobart 421

#### TENNIS

May 13

RIT 9  
Houghton 0

### UPCOMING SPORTS

#### TENNIS

May 24 Roberts at RIT 1:00

#### TRACK

May 29-31 NCAA Division III  
Championships at  
Baldwin Wallace

#### ULTIMATE FRISBEE

May 24 Octad '75, New Jersey

# Tab Ads

1961 AUSTIN HEALY SPRITE (bugeye) MG 1100 engine. Rebuilt head, Pirelli Tires. Needs a little engine and body work. The car is in New Jersey. Asking \$375. Call Bob 464-4209.

WANTED - A truck that runs well, can pass inspection and costs no more than \$150. Call 464-2227 or 235-4354 and ask for Ted or leave a message.

FREE - 7 month old, playful, friendly male cat needs new home by June 1st. Call 4209.

LOOKING for a one or two bedroom house close to RIT to rent beginning July 1. Call Ted at 464-2227 or 235-4354.

FOR SALE: Two 1973 Yamaha Cycles for Sale. 125cc, electric start 2500 miles. 175cc, 4000 miles. \$575.00 each. Call 436-8228.

FOR SALE: 3/4 regular sized refrigerator, hardly used, brown, great for use in the dorms! (\$180.00 new). Call 3852

WANTED: I need a place to keep my Old English Sheepdog. I'm going to be a freshman this fall at RIT and need a place to keep him. Contact Judy Pfeiffer, 117 Schuyler Street, Boonville, New York, 13309 or call 315-942-4135.

Feed the Fish in Pentax Pond.

FOR SALE: King Size waterbed. Includes liner, thermostat, heater, basic frame, and sheets. \$90 or best offer. Call 328-8018 after 5 pm.

WILL BUY: Men's large or medium motorcycle leather, reasonable price. Call Lawrence at 436-7886.

## EASY RIDER BIKE SHOP

39 Jefferson Road  
Front of RIT Campus

Kabuki, "Worlds' Finest Bicycle"  
and other makes of fine bicycles

We repair all makes.

Open daily, except Sundays  
10:30 am to 7:30 pm



## Combat Inflation

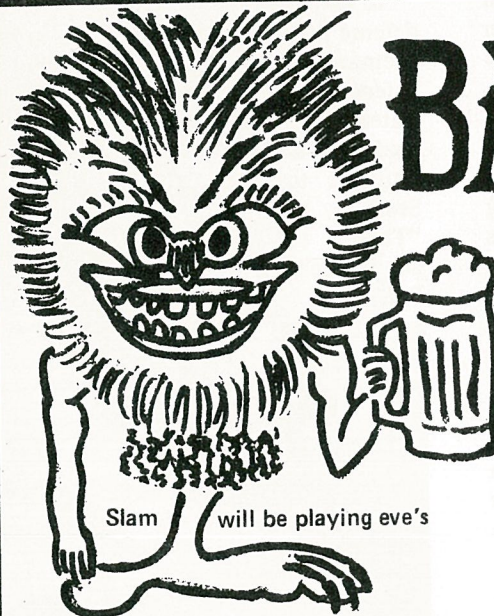
Bring this coupon with you to  
Pizza Kitchens Restaurant

**PIZZA  
\$1.00 OFF**

Good towards the purchase of a  
Large Pizza. (Not good on specials)  
Coupon Expires: June 31, 1975

NINE LOCATIONS

Brighton - Webster  
Greece (2 locations) - Henrietta  
Brockport - Gates  
Buffalo - Auburn



Slam will be playing eve's

# BADFOOT

Has Arrived !!!

Thanx for Waiting . . . . .

In appreciation of  
your patience, you  
may visit us any  
weekday 11am  
2pm for:

a 1/2 lb. Hamburger	\$1.05*
a 1/2 lb. Chzburger	\$1.20*
a Jumbo Ham Sandwich	\$1.05*
a Jumbo Ham & Chz	\$1.20*
& Misc. Chips & Stuff,	

or any time for:

Bottled Beer	\$ .35*
Cocktail (Bar Spirits)	\$ .65*
(*Incl. Tax)	

\*BADFOOT\*

2248 E River Road  
Brighton  
Find us, Please!

# Reproview

"Hearts and Minds"

## Confession of a National Conscience

by R. Paul Ericksen

Peter Davis' *Hearts and Minds* has finally opened in Rochester (it first showed at Cannes in May '74 and opened in New York in November). Had it not won an Academy Award for Best Documentary, had producer Bert Schneider, upon accepting it, not read a memorandum expressing "greetings of friendship to all the American People" from Ambassador Dinh Ba Thi of the Provisional Revolutionary Government of Vietnam, and had Oscar's master of ceremonies Bob Hope not furiously drafted the disclaimer which Frank Sinatra read to the largely unaware television audience, most of that audience might still be unaware that *Hearts and Minds* ever existed.

But *Hearts and Minds* does exist as did the Vietnam war. For those of us fortunate enough to have viewed the war in our living rooms, watching stoically while digesting the lies of five presidential administrations spanning nearly three decades, this film will reveal atrocities we believed could never be attributed to the people of the United States.

For those less fortunate who experienced the war first hand, such as Captain Randy Floyd, unable to hold back his tears before the lingering camera of Davis, this film painfully calls to mind the thousands of Vietnamese he has maimed and killed on Napalm missions. Or the several ex-servicemen that Davis interviews, at first photographing only their faces, then pulling his camera back revealing their crippled, amputated young bodies, to these men and thousands upon thousands like them, *Hearts and Minds* can only be a nightmare revisited.

Whether a Vietnam Vet or an arm-chair spectator, this film will at the very least modify whatever your views on Vietnam. Davis' view of the war is one-sided yet all-sided. He interviews politicians, generals, servicemen and citizens, both Vietnamese and American. He provides us with the pros and cons. He talks with General Westmoreland and then with Daniel Ellsberg. We see a

decorated POW talk to a group of middle-aged mothers and an Army deserter return from Canada and talk for the first time to his own mother. We see and hear excerpts from exclusive interviews with Walter Rostow, presidential aid to Kennedy and Johnson, Senator William Fulbright, Colonel George Patton III, ex-secretary of Defense Clark Clifford, as well as Vietnamese political and business leaders.

We see and hear all of this, but we see through the eyes of Peter Davis and hear through his ears. The statement in this film is made, as in any documentary, in the editing process. Perhaps it is true that little good can be said about the war in Vietnam, but Davis, in his quest to clearly point out the atrocities of the war, juxtaposes statements and visuals which leave little room for us to make our own decision. We are handed a guilty verdict and not given any defense.

It may also be true that there is no defense for this country's actions in the Vietnam war. It is hard to build a defense when given filmed and recorded statements that are so condemning: "I could not have been more wrong in my attitudes toward Vietnam." - former Secretary of Defense Clark Clifford; "They're (U.S. servicemen) a bloody good bunch of killers." - Colonel George Patton III; "It's deeply satisfying (to

run a successful bombing mission)." - Lieutenant George Coker, POW 1966-1973; "The Oriental doesn't put the same price on life as we do. Life is cheap there, not important." - General William Westmoreland, Commanding General 1964-1968. Statements such as these are plentiful throughout this film. They stand up on their own. There is no way of misconstruing a statement by the Commanding General of US forces that "life is cheap" to Orientals. But for that statement to follow a passage in which a grieving Vietnamese widow tries to throw herself into her husband's grave while her children, clinging desperately to a photograph of their deceased father, weep uncontrollably, is overstating the issue.

Yet such indulgences on the part of the director must be excused. There is no wonder that Davis became so involved in his statement that he felt it necessary to totally control our emotions. To see *Hearts and Minds* is to realize the horror of the Vietnam war; to make it could only have been a revelation all the more. The consolation that *Hearts and Minds* "is just a movie" does not apply here. It is so much more than that. It is the confession of a national conscience, best expressed, perhaps, within the context of the film, when Daniel Ellsberg said, "It's a tribute to the American people that...five (Presidential) administrations had to lie to them. It is not a tribute that it was so easy."

Now Playing: Jo-Mor's Cinema.





Maureen Lacey portrays Sgt. Sarah Brown,

## "Guys and Dolls" Amusing and Cheap

by Megan Hartley

Last week's Brick City Players production of *Guys and Dolls* was enjoyable and amusing, if unprofessional. It was saved by the fact that the actors were obviously enjoying themselves.

The dances were so unsynchronized and unrealistic that they were funny. One spot in particular, the dance at the crap game, was so comical that it drew massive applause on Saturday night, although Friday's audience seemed unimpressed.

There were some pleasant surprises during the production. David Honells was excellent as Arvide Abernathy, and his solo was as well done as the leads' attempts were feeble. Maureen Lacey made a good Sgt. Sarah Brown and had one of the very few voices which was adequate. I was also impressed by the casting of the crap players who did meritorious job in their portrayals of the likable mafioso types.

Although not original ideas, it was a relief to see some inventiveness at RIT. I was surprised and pleased to see the cast promenade through the audience singing a hymn during one scene. Saturday night's performance included rowdy stunts such as the shooting of a member of the audience by one of the crap shooters. On all nights, the invitation extended to the audience to boogie with the cast to the excellent music provided by the band, was welcome.

As *Guys and Dolls* was the first Brick City Players production I have attended, I cannot fairly judge them. The end result, fortunately, did provide an evening of good (and cheap) entertainment.—*M. Hartley*

photograph by Bill Lampeter

# Johan's Parliament

2620 West Henrietta Rd.

442-0641

MEMORIAL DAY WEEKEND SPECIAL

**2 BANDS** NIGHTLY FRI. & SAT.

**CIRCUS and PRIDE & JOY**

with JAY COPPOZZI of the BRASS BUTTONS

NO COVER BEFORE 10pm

**HAPPY HOUR PRICES 7-10pm**

SUN. & MON. - BEATLESmania with the EAGER BROS.

NEXT WED-SAT. WILMER & THE DUKES

## RIT Student, Faculty, & Staff Specials !

**HEWLETT PACKARD  
HP-21  
CALCULATOR**

- \* Reverse Polish Logic
  - \* Rec./Polar Conversions
  - \* Trig. & Log Functions
  - \* Four Level Stack
  - \* Much, much, more
- List \$125.00  
**ONLY 120.00**

**ADLER 'Meteor'  
Portable Electronic  
TYPEWRITER**

- \* 88 Character Keyboard
  - \* Quiet Operation
  - \* Repeat Bar
  - \* Electric Return
  - \* One Year Guarantee
- List \$219.00  
**ONLY 165.00**

Offer good Tues. 5/20/75 - Sat. 5/24/75 only. You must bring your RIT ID and this ad to receive these special prices.

**DISCOUNT OFFICE EQUIPMENT**

654 South Ave. 232-4240

OPEN 11 AM - 7 PM SATURDAY 9 AM - 5 PM

USE YOUR MASTERCHARGE

**BULLETIN**



National Office  
(212) 661-1330

**EUROPE at  
prices you can  
afford from \$299!**

TRANSATLANTIC FLIGHTS • RAIL PASSES • TREKKING  
ACCOMMODATIONS • ALL INCLUSIVE "TWO WEEKERS"

Spend less for the air... more when you're there! For  
SPECIAL low rates, members contact...

**NATIONAL ASS'N OF  
STUDENTS AND  
TEACHERS**

(800) 223-5267

Toll free outside  
of New York State

OR mail coupon to NAST,  
Box 1961, Grand Central Station,  
N.Y., N.Y. 10017

Name \_\_\_\_\_  
Address \_\_\_\_\_  
Telephone ( ) \_\_\_\_\_

# What's Happening

## Announcements

(1851) Daniel Webster's "Waterfall" speech in Reynolds Arcade (May 23)  
(1908) Lilac Day at Highland Park (May 24)  
Outing Club Long Weekend, Stratton Mt., Green Mts. hiking. Contact Steve x 3992. (May 25)  
Memorial Day - Institute Closed (May 26)  
Memorial Day Parade downtown (May 26)  
Quantity Food Luncheon — 12 noon in Henry Lomb Room, Call x2351 for menu and reservations (May 27)  
(1775) Seige of Boston Begins (May 30)

## Lectures

Chemistry Seminar by Mr. Raul Rodriguez, Dept. of Chem at RIT. 4 pm Rm 3154. Call 2497 for more information. (May 29)  
Communications Workshop - Alumni Rm. 9-11. Contact Rith Cardner at 2341. (May 30)  
Married Student Organization Meeting - General. 7:30 to 8:30 pm in Mezzanine Lounge.  
Health Fair — 10 am-4 pm, Jewish Community Center, 1200 Edgewood (tests offered for all - diabetes, glaucoma, hearing, etc.). (June 1)  
"A thesis Presentation" by Jim Ludwig. M.F.A. Gallery now to June 7.

## Movies

"A Streetcar Named Desire" Talisman, to be held in Booth Auditorium at 7:30 and 10 pm. (May 23)  
"Sumer of '42" Captioned Film, place to be announced, at 7 pm. (May 23 & 24)  
"Five Easy Pieces" Talisman 7:30 and 10 pm and Midnight, to be held in Ingle Aud. (May 24)  
"Doctor Doolittle" Munchkin Matinee, to be held in Ingle at 2 pm.  
"L'es Biches" Talisman, to be held in Ingle Aud. at 7:30 and 10 pm. (May 25)  
"I Love You Alice B. Toklas" 7:15 and 10 pm  
"I Love You Alice B. Toklas" 7:15 pm at the Jewish Community Center at 1200 Edgewood. Admission is \$1.50. (May 25)  
"Images" (U.S., 1972) CINEMASTERS, to be held in Ingle Aud. at noon and 7:30 pm. Admission is FREE. (May 27)  
"Taxi Barons" Ben Turpin, Billy Gilbert, Nickelodeon Theatre, to be held in Ingle Aud. Admission is \$.05 (May 27)  
"East of Eden" (1955) - Nazareth Academy Film Series 1975. To be held in the Nazareth Academy Auditorium at 7:30 pm. Admission is \$.50. (May 29)  
"The Treasure of Sierra Madre" and "to Have and Have Not," Talisman, Humphrey Bogart Double Feature, \$1.25 at 8 pm in Ingle. Midnight showing of "The Treasure of Sierra Madre" will be for \$1.00. (May 30)  
"Taste The Blood of Dracula" Captioned

film, place to be announced. 7 pm. (May 30-31)

"Take the Money and Run," and "The Producers" Talisman, to be held in Ingle Aud. at 8 pm. Admission is \$1.25. First Cracks Double Feature. (May 31).

"Take the Money and Run," Talisman, to be held in Ingle Aud. at midnight. Admission is \$1.00. (May 31)

"The Wizard of Oz" — Munchkin Matinee to be held in Ingle Aud. at 2 pm. (May 31)

"The Day the Earth Stood Still" and "Invasion of the Body Snatchers" Talisman, to be held in Ingle Aud., at 3 and 8 pm. Admission is \$.75. Science Fiction Double Feature. (June 1)

"Best of the Fest", Film Festival, to be held at the Jewish Community Center at 1200 Edgewood. Admission is FREE 7 pm. Selection of films from Rochester International Film Festivals. (June 1).

## Night Life

James Taylor in Concert at the Dome Arena. Tickets are \$6.50 at the door. Concert is presented by R-H Productions in conjunction with WCMF Radio. (May 23)

Linda Rondstadt in Concert at the Auditorium Theatre. Tickets are available at all Midtown Records locations at \$4.50, \$5.50 and \$6.50. Sponsered by R-H Productions in conjunction with WCMF Radio. (May 29)

"Spell Bound" - (RMSC) 2 and 8 pm. Students \$.50. (May 29)

Open rehearsal, "JCC music ensemble", 7:30 pm, Jewish Community Center Theatre. (May 29)

Married Student Happy Hour. 7:30 pm to midnight at Colony Manor Cabana (May 30)

## Continuing Events

RIT permanent Photographic Display and Annual Photographic Competition. College Union (May 10-25)

Joe Benenate - College Union Display - Photo Professional - School of Photography (May 25-June 2)

Christian Science Organization - College Union, Rm M-2, 7:30 pm. Regular Meeting. Counseling from 1-2 pm, Conf. Rm B. College Union. Contact Ron Clarke at 4359. (Every Tuesday)

Outing Club - 7:30 pm NRH South Lounge. Trips every weekend, movies, speakers, (Every Wednesday)

MFA Gallery-A Thesis presentation by Tom Petit. 3rd floor photo bldg. (May 18-24)  
"Little Italy" Antonio Toscano (Graduate Student) A MFA Theses Celebration (May 25-31)

International Museum of Photography - An exhibition of 40 early photographs by Alfred Steiglitz from the collection of Wade Newlin. Brackett Clark Gallery. (through May 30)

Wallace Memorial Library Gallery - Pottery by Aaron and Viluna Jennings. (May 12-June 8) Daily, 2nd floor Gallery.

The Aquarian Self-Discovery Center Invites you who are seriously interested in spiritual & psychic development to attend a meditation group operating within the Western Esoteric Tradition. Meetings are Monday nights at 8 pm. Tel. 334-1215 for more information. Also psychic counseling by appt.

Reading and Study skills Lab Hours: Mon to Thurs. 9-12 noon, 1-3 pm and 6:30-9:30 pm Friday 9-10 am. At the Learning and Development Center.

Writing Lab Hours: 2-4:30 pm Mon to Friday Room 01-2321. Learning and Development Center.

RIT Chorus: 6:30 meeting.

Meeting: FORIT 8 pm Mondays in Kate Glason South Lounge.

**A former addict is a human being,  
No different from anybody else.  
Just an ordinary worker.  
If he gets the chance.  
You can give him that chance.**

new york state  
Drug Abuse Control Commission

**PART TIME  
HELP WANTED**

**positions open**

**Business Mgr.**

**Social Director**

**requirements**

**- Must live in**

**Residence Halls**

**' 75 - ' 76**

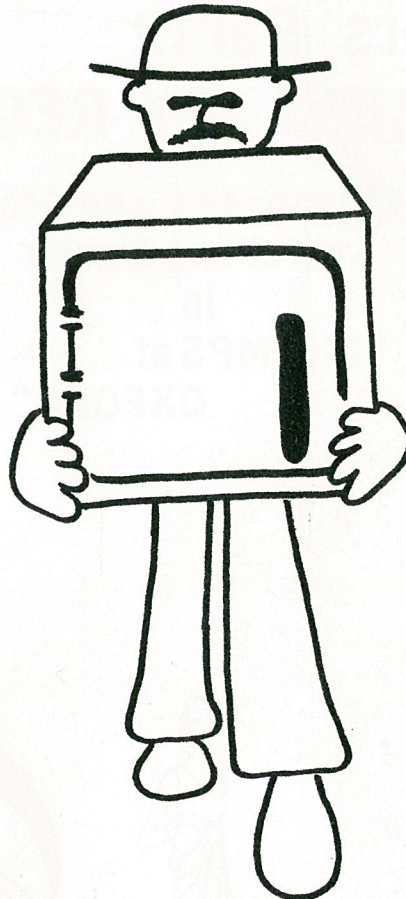
**Salary**

**Benefits**

**FOR ADDITIONAL INFO  
2305, 2819, 4411**



# REFRIGERATOR RETURNS



**Where to return your rented refrigerator:**

Return your unit to the basement between Sol Heuman & NRH HALLS for your 10.00 deposit refund.

**When to return:**

Tues.	May 27	7:30 pm to 10:00 pm
Thurs.	May 29	7:30 pm to 10:00pm
Fri.	May 30	7:30 pm to 10:00 pm

Refrigerators must be returned in a dry s and clean condition to obtain the 10.00 deposit refund.

Failure to return your refrigerator by Friday May 30th will make you libel for a penalty fee or the cost of the unit plus tax which will be charged to your school account.



# Seniors Party ROARING 20's REVIEW

Free/Champagne and Movie  
Laurel and Hardy  
in  
"CHUMPS at  
OXFORD"



CU CAFETERIA  
JUNE 6, FRIDAY  
9:00 P.M.  
ADM. \$1.00

\*Group Tables Reserved  
At Student Activities Off.  
Call 464-2508