

- 2 First Brinkman professor named
 - 3 New Staff Council leaders; working on awards
 - 3 Gannett lecture focuses on nature
 - 4 News & Events goes digital
-
- 3 Playful shapes in Bevier faculty exhibit

Artwork by Elaine Defibaugh (left) and Wendell Castle (right)

Report shows enrollment increase

Enrollment at RIT increased again this fall, as confirmed in figures recently released in the Institute's 21-Day Enrollment Report.

The total number of enrolled students rose from 12,600 to 12,933, with FTE enrollment increasing from 9,233 to 9,511. Major factors contributing to the increase include RIT's continuing success in attracting new students, and the large number of returning sophomores who entered RIT last fall. The cumulative effect of enrolling two large freshman classes "back to back" has been especially positive, according to

Jim Miller, vice president for Enrollment Management and Career Services.

Both undergraduate and graduate student enrollments exceeded their projected levels; graduate enrollment boasted a 6.3 percent increase over last fall and undergraduate is up by 1.9 percent. Part-time enrollment fell slightly short of its projected growth, but still rose 1.7 percent; the number of full-time students grew 3.2 percent.

The colleges of Business, Applied Science & Technology, NTID and Science saw the largest increases in enrollment this fall.

"These positive results reflect RIT's strong position in competing for new students, and our overall enrollments continue to be very stable," says Miller. "We're not only pleased with our numbers, but with the continuing strong quality and diversity of our applicants and our enrolled students."

This year's freshman class is the second largest in the history of RIT, with 1,774 students entering, up from 1,712 last year. This number includes 234 freshmen in the National Technical Institute for the Deaf, up from 210 last fall. The increase in entering freshmen helped offset a drop in new transfer students, who totaled 990 this fall versus last fall's 1,050.

Miller noted that the total number of admissions applications received from freshmen, transfer, and graduate applicants over the past year increased by 5.1 percent, to a record level of 11,498. This number reflects an increase of 512 undergraduate applications and 203 graduate applications over the four quarter period. As a result, the Institute was able to maintain a strong academic profile and level of selectivity while also exceeding enrollment projections for new students.

"Our Strategic Plan calls for an increase in enrollment, and we are continuing our progress in meeting the goals we set during our planning process," says President Simone. "Our strategy of focusing on providing the finest career preparation

RIT Fall Quarter Enrollment Summary

FTE	Actual	Actual
	Fall 96	Fall 96
	FTE	Headcount
By College		
Business	870.3	1,284
Engineering	1,341.0	1,899
Liberal Arts	512.7	548
Applied Science & Technology*	2,856.7	4,821
Imaging Arts & Sciences	2,101.0	2,286
NTID**	798.0	830
Science	1,015.7	1,155
Other	15.7	110
Total Institute	9,511.0	12,933

* CAST totals include continuing education programs

** NTID enrollment number does not include students cross-registered in other RIT colleges

Note:

- Full Time Equivalents (FTE) = Full Time + Part Time/3
- Students who are registered, but not consuming credit hours (e.g., Physical Education, ESOL, Continuation of Thesis, etc.), are excluded from FTE calculation
- FTE includes Prague and Military Science

Source: Students Accounts and Records Systems (STARS)

continues to raise RIT's standing in the higher education marketplace, as more and more people recognize the quality and value of an RIT education."

RIT Fall Quarter Enrollment Summary						
Headcount	History		Budgeted Fall 96	Actual Fall 96	'95 to '96 #Diff	'95 to '96 %Diff
	Fall 94	Fall 95				
Status						
Full Time	7,678	8,017	8,164	8,274	+257	+3.2%
Part Time	3,673	3,648	3,782	3,711	+63	+1.7%
Co-op w/o courses	574	551	533	558	+7	+1.3%
Non-Credit	325	384	398	390	+6	+1.5%
Total	12,250	12,600	12,877	12,933	+333	+2.6%
Level						
Undergraduate	10,286	10,552	10,741	10,755	+203	+1.9%
Graduate	1,964	2,048	2,136	2,178	+130	+6.3%
Total	12,250	12,600	12,877	12,933	+333	+2.6%
FTE						
Total	8,902	9,233	9,392	9,511	+278	+3.0%

Source: Students Accounts and Records Systems (STARS)

Regatta to stir the waters of the Genesee this Sunday; premier crews to gather from throughout Northeast

Rain or shine, the water of the Genesee River will be riled by hundreds of pairs of long-handled oars on Sun., Oct. 13, at the first ever Stonehurst Capital Invitational Regatta. While this is the eighth year of the regatta, it is the first with Stonehurst Capital as its sponsor and the first that RIT will cohost along with the University of Rochester.

Nearly 900 men and women will compete in the all-day event, kicking off at 9 a.m. It will gather some of the premier crews from throughout the Northeast. Among the universities joining RIT and the UR will be Brown, Cornell, Dartmouth, Harvard, Princeton, West Point, Yale, and the University of Wisconsin.

Stonehurst Capital and its founder Arthur Gosnell stepped in last winter when



Photo by James Montanus, UR

A crew gives its all in a past competition.

Bausch & Lomb announced that it would be unable to continue its seven-year sponsorship of the event, which has become a centerpiece of Rochester's River Romance Weekend. The event has drawn

as many as 20,000 spectators to the east and west banks of the Genesee River.

The morning races, called "head races" or distance races, are three miles in length. Head races begin at 9:30 and are by division: men's and women's fours, eights, lightweight and heavyweight. Based on the morning's results, the boats are paired for the 1,500 meter sprint races, which get underway at 1:30 pm.

RIT and the UR have coordinated the activities of 16 area businesses who will host hospitality events in Genesee Valley Park, on the east bank of the river. The best viewing area is at Genesee Valley Park, south of Elmwood Avenue.

Shuttle buses will run from 9 a.m. until 4 p.m. from the RIT campus with stops at

Continued on page 4

Science presents 'Failing at Fairness' gender-bias lecture

The College of Science has reached a goal sought by science programs across the nation. For the first time, the college's incoming female students outnumber the males 51 percent to 49.

A continuation of its efforts to retain women in science and math, the college presents "Failing at Fairness: Gender Bias in the Classroom," a lecture by David Sadker from 3 to 4 p.m. on Thurs., Oct. 24, in Room 1250, College of Science Auditorium. The presentation is part of the college's annual lecture series on Excellence in Teaching Science and Mathematics.

Sadker has directed more than a dozen federal equity grants, authored five books and appeared on national television and radio programs, including *Good Morning America* and NPR's *All Things Considered*.

The lecture complements the college's many initiatives to recruit female students and support their success at RIT. Other initiatives include outreach programs that pair elementary through college-age females with professional and business mentors, both through personal interaction and electronically via e-mail.

"As the nation continues to struggle with the problem of under-representation of women in science-related fields, universities must be the leaders in reversing this trend," says Catherine Didion, executive director of the National Association for Women in Science. "With its emphasis on mentoring and peer involvement, RIT's College of Science could serve as a national role model for recruiting and retaining women in science."

The lecture is free and will be interpreted.

Sports Hall of Fame is lasting tribute to achievement

RIT Sports Hall of Fame, honoring individuals' significant contributions to RIT intercollegiate athletics, has selected five new members. The honorees are former men's soccer coach Doug May, and former athletes Scott Brown (ice hockey), Ted Diehl (lacrosse), Jill Turner Dumont (ice hockey and soccer) and Kevin McCarthy (soccer). They will be recognized during the 28th annual dinner ceremony at 6 p.m., on Sat., Oct. 19, in the Student Alumni Union cafeteria.

During Doug May's 16 seasons as coach (1980-96), the RIT men's soccer team gained national prominence. Under his leadership, the Tigers competed in 11

National Collegiate Athletic Association Division III tournaments, reaching the semifinals four times and finishing runner-up once. May achieved a record of 196-56-24. This fall, he started his first season as men's soccer coach at Nazareth College.

Scott Brown (College of Business '89) wasted little time making his mark in Frank Ritter Ice Arena. He tallied an RIT-record 74 points as a freshman, helping the Tigers win the NCAA consolation crown. He was named Eastern College Athletic Conference Rookie of the Year and All-American in 1988-89. Scoring 225 points in four seasons, Brown achieved the second-highest total in RIT history. Brown

owns and directs the Dalhousie Home for Youth in Smiths Falls, Ontario, Canada.

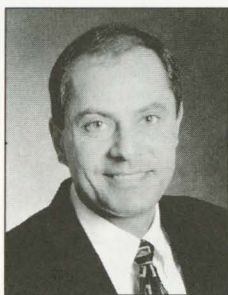
Ted Diehl (College of Engineering '87) was a true student athlete, excelling in the classroom and on the lacrosse field. While maintaining a 3.98 grade point average over four years, he helped his team compile a 50-10 record, good for four trips to the NAAs. He scored a team-leading 52 points his senior year. Diehl is a senior staff mechanical engineer, in the advanced manufacturing technology division, with Motorola in Plantation, Fla.

Jill Turner Dumont (College of Liberal Arts '88) had a heralded career playing

Continued on page 4

DONATIONS & GRANTS

Nasr named Engineering's first Brinkman Professor



Nabil Nasr

Nabil Nasr, associate professor of industrial and manufacturing engineering, has been named the first Earl W. Brinkman Professor of Screw Machine Technology. Earl W. Brinkman's family endowed the professorship and established the Earl W. Brinkman Machine Tools Laboratory in RIT's CIMS Building to honor his lifetime contributions to the metalworking industry.

Also in memory of Brinkman, the Davenport-Hatch Foundation has funded \$50,000 towards the professorship, \$250,000 towards the laboratory and has pledged additional support. RIT honored Brinkman and recognized his family and the Davenport-Hatch Foundation at a ribbon-cutting dedication ceremony Sept. 24.

Screw machine technology developed the automated machining tools that make small parts quickly and efficiently. "Nabil's long history in working with machine tools, especially automated machines, uniquely qualified him for this professorship," says Paul Petersen, dean of the College of Engineering. "This is an important, useful

laboratory for RIT to have. We're pleased the Brinkman family decided to establish a living memorial to Mr. Brinkman within the College of Engineering."

As the Brinkman Professor, Nasr will lead RIT's efforts in working with the screw machine and machine tools industries. He will prepare engineering students to work with and advance the performance of manufacturing tools. He will also create a network of screw machine and machine tool users to develop and advance those technologies.

Brinkman entered the metalworking field at age 17 as an assistant to a dealer in Milwaukee. A year later, that position led him to a job offer in Rochester working for Davenport Machine Tool Company. He spent the next 53 years with Davenport, retiring as president. He had a major impact on the future of the machine, the company—and most importantly—the people he worked with, says his son Robert J. Brinkman.

Earl Brinkman developed and sometimes patented many innovations which made the machine do things no one else could do or faster than anyone else could do them.

Robert, who followed his father into the metalworking field, serves as president of C.J. Winter Machine Works, Inc. He described his father as "a self-taught mechanical genius always looking for a better way, a faster way, a way never tried before. He taught me how to stick to it until you have the answer."

Xeikon donates digital press to CIMSPrint

RIT's new National Center for Printing, Publishing and Imaging, known as CIMSPrint, has received a \$450,000 Xeikon DCP/32D digital press from Xeikon, based in Belgium. According to John Peck, director of CIMSPrint, the donation allows the center to take its industry service to the next level by offering state-of-the-art digital printing technology.

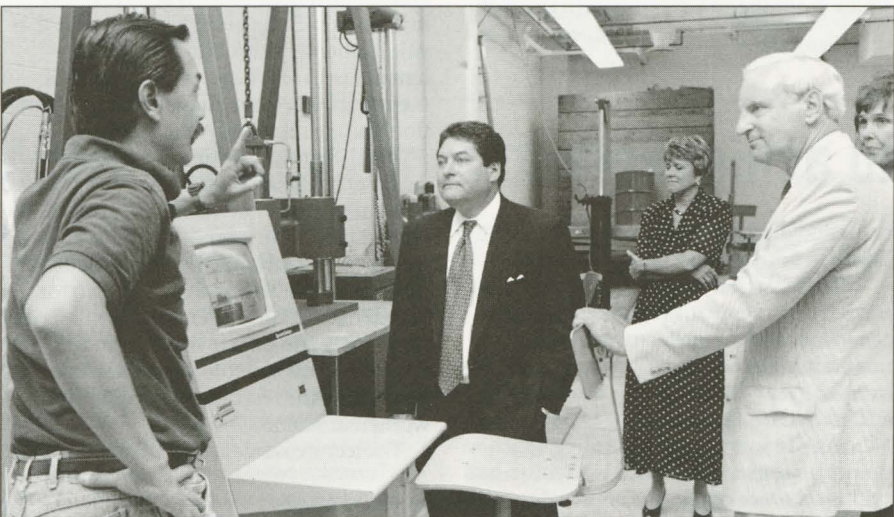
CIMSPrint is the printing and publishing research arm of RIT's Center for Integrated Manufacturing Studies. Located in a new 157,000 square-foot showcase facility, CIMSPrint will offer extensive research capabilities to the printing industry, primarily in the areas of digital workflow, digital and remote proofing activity, and systems manufacture and supply. CIMSPrint also offers evaluation and analysis of new dry film and plate procedures as well as the hardware required to image those products.

Xeikon is only eight years old, but has been making great strides internationally in the digital printing world with the development of its DCP-I digital print engines. The Xeikon press features the Variable Data System which enables personalization of any type of data—text, line art or image, on every page of a document in full color.



John Peck (right), director of CIMSPrint, and David Cohn (second from right), technology manager in CIMSPrint, work with AM/Multigraphics applications training specialist Timothy Canboy during the installation of the new Xeikon DCP/32D digital press. AM/Multigraphics is the American distributor for Xeikon.

Peck says the center will provide industry access to the printing, publishing and imaging resources at RIT, including the Technical and Education Center of the Graphic Arts and Imaging, the College of Imaging Arts and Sciences, the Center for Imaging Science, the High Technology Center for Electronic Publishing and Imaging at NTID, the College of Applied Science and Technology and the Educational Technology Center.



SENATORIAL TOUR OF CIMS... New York State Sen. James Alesi, (center), (R-55th District), and Nathan Robfogel, (right), vice president for University Relations, get an update from John Siy, (left), on the new Packaging labs in the Center for Integrated Manufacturing Studies. The \$22 million, 157,000 square-foot CIMS facility was constructed with \$10 million in state funding. Along on the tour were Deborah Stendardi (rear center), associate vice president for University Relations, and Judi Gustinis (far right), director of CIMS.

NEW APPOINTMENTS

Burriss tapped as Business assistant dean



Martha Burriss

Martha Burriss was recently appointed assistant dean of student services in the College of Business. As assistant dean, Burriss is overseeing and leading the newly combined undergraduate and graduate student services areas. Quality customer service as well as unifying and simplifying the processes that affect the students are goals in her new role.

Burriss has served the college for 13 years in management, customer service and advising roles, most recently as director of student services. At RIT, Burriss has also been involved in orientation, commencement, the part-time enrollment advisory group and the middle states reaccreditation committee.

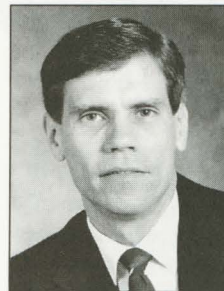
Burriss has represented RIT in recruiting domestically and abroad, has participated in the National Academic Advisors Association and is a member of the American Marketing Association.

Burriss earned her M.B.A. in marketing from RIT this year and her B.A. in sociology and criminal justice from Western Michigan University in 1977.

mystery and grace in their faith. All my preaching is an ongoing conversation around that."

Hering describes the interfaith center as a sacred place, but also as a tool, a springboard to facilitate the ministry in the greater community. "This is a place of hospitality and all are welcome," he says.

New chair appointed in industrial design



Kim Sherman

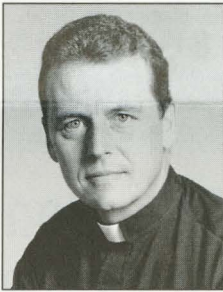
Kim Sherman, of 1991 solar car design team fame, has been named chair of the Industrial, Interior and Package Design Program in the School of Art and Design. An RIT 1991 M.F.A. alumnus in industrial design with a minor in computers, Sherman expects to "have the best of both worlds" by working with students and faculty and running his company, Think Design.

"I love creative problem solving, which is what design is all about," he says. Combining that passion with college students' creativity and explorative abilities equals "a lot of energy here!" he says.

Sherman began his career in education in 1982 as a teacher in the Syracuse Onondaga-Madison B.O.C.E.S. Program for the severely emotionally disturbed, and was artist-in-residence at Lafayette Central School, 1984-85. He later taught art at Oswego High School until deciding in 1988 to move to industry as a designer for KEK Associates, Inc. in Rochester. He worked for KEK through graduate school while teaching part-time at RIT. In 1995, RIT brought him in full time.

"This is the ultimate for me," says Sherman. "It combines my experience as a high school art teacher and my training in adolescent psychology, fine arts and mechanical problem solving."

Hering named to lead Campus Ministries



Jeffrey Hering

Jeffrey P. Hering, Lutheran campus pastor at RIT, has been named the new director of the Center for Campus Ministries. Hering, or Pastor Jeff as he is most often called, has served the RIT community for the past 11 years.

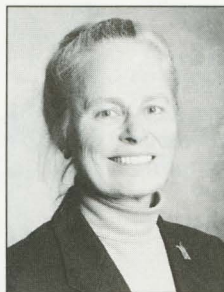
Prior to joining RIT, while a Lutheran pastor in Lewiston, N.Y., Hering helped out Niagara University's Campus Ministry, his introduction to serving in higher education. "I find the variety of experiences on campus continuously exciting," he says. "My biggest problem is that I'm always the oldest person in church on Sunday."

The ministry wasn't something Hering sought out or planned. He affectionately refers to his calling as C.S. Lewis had described it, "something he was dragged into kicking and screaming." In the same vein, Hering, who describes himself at his best one-on-one "articulating God's love to individual needs," didn't seek to be the director. "In this role, I facilitate the ministry of a varied and talented staff—but my job is to get out of their way," says Hering. "I'm really excited to be working with this group. We have five new chaplains—it's a whole new day." The new campus ministers are Joe Catanise, Catholic; Tim Eckert, Lutheran; Kip Lombardo, Hillel program; George Savas, Greek Orthodox; and Paul Walker, Episcopalian.

On the second day of classes the staff stood outside Schmitt Interfaith Center and handed out 490 popsicles—just for the fun of it. "Our focus used to be on serving people who came into the building," says Hering. "Our new focus is to get out of the building and serve the larger community." The staff plans to offer more Residence Life floor programs, serve as a resource on spirituality, culture and religion and other student-related issues, and build a stronger relationship with the hearing impaired and deaf community.

"I find that students lean towards a view of religion that is highly moralistic," says Hering. "I try to underscore a sense of

Language/literature chair appointed



Sandra Saari

Sandra Saari has been named chair of the Language and Literature Department in the College of Liberal Arts. A professor of comparative literature first at Eisenhower College then at RIT, Saari modestly says "it's my turn to do my share of work for my colleagues."

A college professor all her professional life, Saari has specialized in Norwegian playwright Henrik Ibsen, who wrote *Hedda Gabler* and *A Doll House*. "I've always been fascinated by his feminist treatment of turn-of-the-century women," she says.

That scholarly interest earned her a year, 1993-94, as a Research Fellow at the Centre for Advanced Study at the Norwegian Academy of Science and Letters in Oslo, an honor shared by only six other Ibsen scholars from around the world. In 1995 Saari was elected a member of the Norwegian Academy of Science and Letters, "the highest honor afforded by the Norwegian academic community." Later that year, famous theatre director and actor Andre Gregory and playwright and actor Wally Shawn invited her to translate Ibsen's *Masterbuilder* with the hope of adapting it for a play in the manner of *Vanya on 42nd Street*.

A Minnesota native (Garrison Keiller went to her high school) with Scandinavian ancestry, Saari loves hiking her 65 acres in Phelps and, during her annual research

Continued on page 3

Staff Council introduces new executive committee; to premiere staff awards

RIT Staff Council introduces an entirely new executive committee for the 1996-97 academic year. It will also introduce a new Staff Recognition Awards Program.

RIT staff originally elected Alice McCrave, former manager of information services for the College of Continuing Education, to serve as RSC chair. When CCE and CAST merged, she resigned her position. Cindee Gray, manager of community relations and special events in Government and Community Affairs, who had been elected vice chair, assumed McCrave's position.

Also elected are Michael Serve, NTID financial planning and budgeting, as vice chair to Gray; Barbara Warth, College of Applied Science and Technology, as treasurer; and Peiter Poulton, Physical Plant, as communications officer.

RSC's upcoming initiatives focus on staff participation and staff recognition. "We will continue to tap the talent and experience of all levels of professional and general staff," Gray says. "We need their active participation in RIT's decision-making process and as advisors to the president on issues affecting staff."

A major initiative, RSC will sponsor RIT's first Staff Recognition Program, supported by President Simone and the administrative council. The program stems from RSC's Staff Recognition Task Force proposal. RSC expects the Board of Trustees to further endorse the proposal when it reviews it at the November meeting.

The university-wide award program recognizes the contributions of individual staff members or teams of co-workers who have had a major impact on the university,



Staff Council's 1996-97 Executive Committee: (left to right) Michael Serve, Barbara Warth, Cindee Gray and Peiter Poulton

its goals and its customers. Open to all non-faculty RIT employees, the program applies to all staff, whether in the administration or in the academic units, exempt or non-exempt.

Award categories for both teams and individuals are Excellence in Customer Satisfaction, Excellence in Increasing Work Productivity and Outstanding Citizenship within the University Community. Recipients in each category will receive a monetary award, \$750 for individuals, \$1,500 for teams, along with a framed certificate of merit and a personal memento.

The first awards will be presented in October of 1997. RSC will launch the award program's kick-off in June. Nominations are due July 1. For more information on RIT's Staff Recognition Program, call RSC at -7656.

RIT athletic teams place in Directors' Cup

RIT's athletic teams tied for 43rd among more than 350 NCAA Division III colleges in an all-sports competition for 1995-96. In compiling results for the National Association of Directors of Athletics/Sears Directors' Cup, points were awarded for each university's national ranking in 20 sports—eight "core" sports each for men and women, and two "wild-card" sports for each gender.

"Our number 43 ranking is indeed an accomplishment in which we take great pride," said Louis W. Spiotti Jr., director of Intercollegiate Athletics. "It reflects the collective efforts of all our student athletes, staff, institute supporters and the many others involved in our program."

Early prospects look good for RIT moving up in the ranking. Previously, RIT had only nine men's or women's sports that qualified for the contest, limiting the total number of points the Institute could earn. However, with the addition of three new varsity sports this year, the Tigers are fielding 23 intercollegiate teams—12 for men, 11 for women—that will be eligible.

Adding to the outlook for next year's Directors' Cup, RIT's women's volleyball team ranks third among 50 colleges in the NCAA New York Region this fall. Last year, none of the women's teams advanced to NCAA post-season competition.

Williams College won last year's inaugural Division III Directors' Cup. In addition to Williams, RIT competes regularly against several nearby colleges ranked in the top 50, including Binghamton, Ithaca, SUNY Cortland, University of Rochester, William Smith and SUNY Geneseo.

October film series features two contemporary artists

RIT's Visiting Artists and Lecturers/Screening Series resumes for the 1996-97 season with two contemporary artists in October.

New York City pop culture collage animator "extraordinaire" Lewis Klahr comes to RIT on Oct. 22 to screen and discuss his enigmatic films. From 9 a.m. to noon in the auditorium of the Chester F. Carlson Center for Imaging Science, Klahr will present selections from his 20 years of "cut and paste animation of figures and spaces" taken from magazines and assorted sources. He will include a series of musicals which he says hold "content that can not be depicted in the contemporary music video."

On Saturday afternoon, Oct. 26, world-renowned independent film producer Christine Vachon visits campus for a one-on-one workshop with students (anyone interested must call -2743 to sign up; space is limited). New York City-based, Vachon has produced such "art house" hits as *Kids*, *I Shot Andy Warhol* and *Todd Haynes' Safe*. She has overseen and contributed to the explosion of independent gay and lesbian-themed films in recent years. Her RIT workshop will focus on "the hows and whys" of contemporary independent film production, an inside look at relationships between big money and small films, and aspiring filmmakers' questions.

The free public series is funded by RIT's Creative Arts Committee, Educational Technology Center, Film/Video Department in the School of Photographic Arts and Sciences and by local and state organizations.

New appointments

continued from page 2

trek on Ibsen, above the tree line in the Norwegian mountains.

As an avid reader, she has an eclectic taste in books, seeking writing from around the world and "the multiple currents of literature in the U.S. and Canada," especially Latino/Latina and Native American work.

Student Government offers shuttle to polls

To encourage the RIT community to get out and vote, Student Government volunteers will shuttle registered voters to the polls on Bailey Road on election day. The van will pick up voters from the administration circle at noon, 2, 4 and 7 p.m.

In a recent student voter registration drive, volunteers from Student Government, Community Service Clubhouse, Hillel and Alpha Kappa Alpha helped registered more than 300 students. "We understand the importance of having our voices heard," says Wanda Droz, vice president pro-tempore of RIT's Student Government. "We want to make sure that students realize that this is a crucial time for our generation and our vote is our voice."

If you still need to register to vote, forms are available in the Wallace Library, the Student Government Office and the Killian J. and Caroline F. Schmitt Interfaith Center. For more information, call Arlene Evangelista at -4968.

Faculty and Staff Get Together Oct. 18

The Division of Finance and Administration will host the first "Faculty/Staff Get Together" of this academic year from 4 to 6 p.m. on Oct. 18 in the Ritskeller, Student Alumni Union. There will be a cash bar and free hors d'oeuvres and soda. The get-together presents an opportunity to meet new colleagues and renew old friendships.

Film/video students awarded at festival

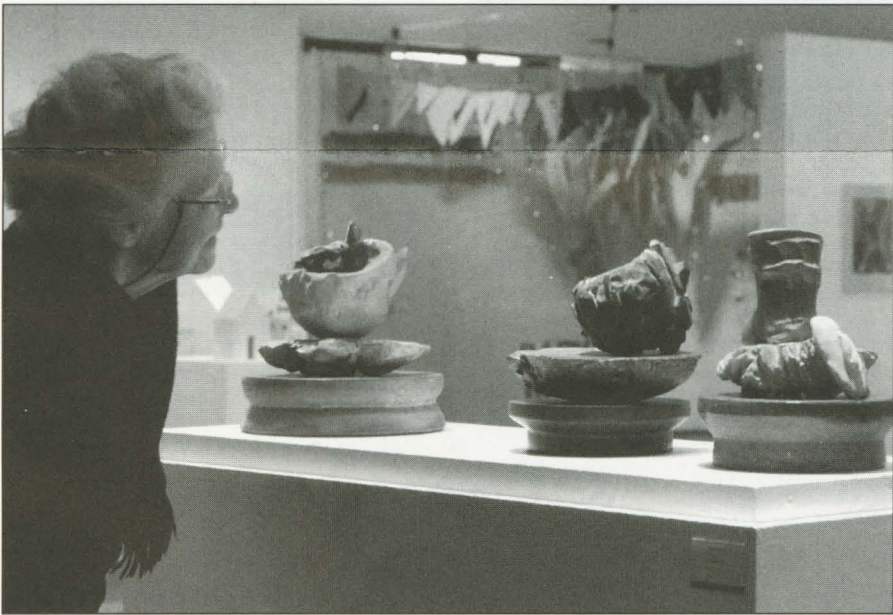
Film/video students took three firsts, a second and an honorable mention in the 19th annual Student Film and Video Festival, sponsored by the Society of Motion Picture and Television Engineers and the Rochester Audiovisual Association. Ten universities or colleges in New York State sent 25 entries for the Sept. 10 program and judging.

RIT winners are: Steven Palmer, first place for *Joe, The Rainy Day Man*, animation category; George M. Nadeau, second place for *Nightlight*, animation; Wan Chiu, honorable mention for *Milk*, animation; Shannon Lechner for *Searching for the Ultimate Thrill*, nonfiction category; and Aly Lim, first place for *Dream Chaser*, fiction category.

Electrical/Mechanical Technology accredited

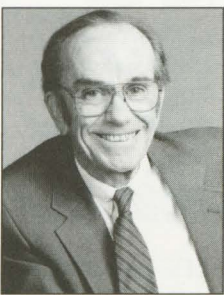
RIT's B.S. program in Electrical/Mechanical Technology was recently accredited by the Technology Accreditation Commission of the Accreditation Board for Engineering and Technology.

Administered by the College of Applied Science and Technology, the distance learning program is offered at a number of community college and corporate sites. Participating community colleges include Broome, Corning, Delaware Tech, Jamestown, Cayuga, Onondaga and Tompkins Cortland. The program also is offered to students in Rochester during the evening, as well as at General Motors sites in Michigan.



POT-PEERING... "Primal Cups" and 45 works by 29 faculty members present an enriching artistic experience for visitors to RIT's Faculty Exhibition I in Bevier Gallery, through Oct. 14. The show—first of two exhibits by faculty in the schools of Art and Design and American Crafts—offers such work as Rick Hirsch's vessels that catch the tactile-sensing eye and Zerbe Sodervick's "Back in 5 Installation" of hanging handmade paper twinkling with tiny modern lights.

'Hidden Value of Nature' subject of next Gannett lecture by noted expert



Thomas Eisner

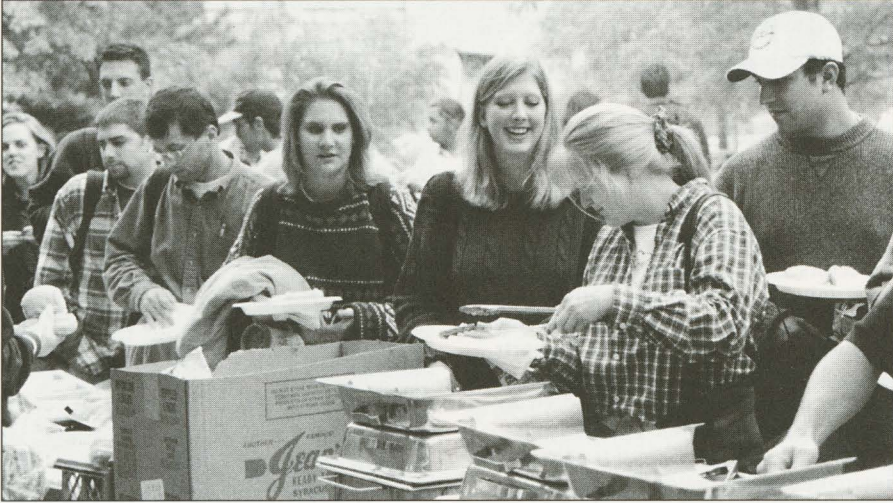
Winner of the National Medal of Science in 1994, noted biochemist and entomologist Thomas Eisner presents "The Hidden Value of Nature" at 7:30 p.m. on Oct. 24 in Webb Auditorium. Eisner, fourth speaker in the 1996-97 Caroline Werner Gannett Lecture Series at RIT, will address the diversity of life forms on earth, chemical prospecting and the global ecology imperative.

Eisner helped found the discipline of chemical ecology and uses his work to gauge the environment's health and the effects of habitat ruination on life forms.

His political lobbying has helped pass legislation that protects the Florida Keys and the Texan "Big Thicket" wilderness. He believes "any biologist who is not also an active conservationist is not doing the entire job."

The Shurman Professor of Biology at Cornell University since 1966, Eisner studies chemical interactions of organisms and has widely published research on entomology and chemical ecology. His specific interests focus on the chemical bases of insect plant interactions, pheromonal bases of insect communication and chemical bases of secret defense.

His talk continues this year's Gannett series theme of "Issues in the Environment and Citizenship." The lectures, part of RIT's mandatory Senior Seminar in the Liberal Arts, stress connection to the human community and global planetary survival. The free, public talks are handicapped-accessible, interpreted for deaf and hearing audiences and conclude with a reception.



BUSINESS BLOWOUT . . . The largest crowd ever gathered for the College of Business annual fall picnic late last month. More than 500 faculty, staff and students joined in the festivities, which included a band and swinging to the macarena.

Stonehurst Regatta continued from page 1

D Lot and the Ice Arena, the Student Alumni Union, and G-Lot, south of Andrews Drive. The buses will leave RIT on the half-hour and arrive at the regatta on the hour.

Hospitality tent sponsors include: Alling & Cory; C&E Operations; Chase Bank; Clover Capital Management; Deloitte & Touche LLP; Hyatt Regency Rochester; Ivy League College Alumni; Raymond Le Chase Inc.; Nixon Hargrave; Peat Marwick; QCI Asset Management; RIT; Stonehurst Capital Inc.; Time Warner Communications; University of Rochester Alumni; and WHAM.

Entertainment will begin at noon and include Gary the Happy Pirate, a number of RIT and UR musical groups, face painters, jugglers, and clowns. Strolling entertainment will stop at each hospitality tent throughout the day.

RIT's crew, established just three years ago, attained varsity status this year. It involves more than 40 men and women students. RIT medaled in the men's varsity eights and womens' open-four races, placing third in both at last year's Regatta.

New this year to the regatta are the Kate Louise Cups, awarded to the teams with

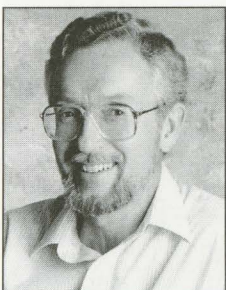
the best times in the distance and sprint races combined for the men's and women's collegiate eights. The collegiate division includes primarily the smaller Division II and III programs. The trophies are named in honor of Mrs. John C. Trahey, the aunt of Arthur A. Gosnell, chairman of the board and CEO of Stonehurst Capital LLC.

The Gosnell family has strongly supported the RIT crew program. Arthur's father, Thomas, donated a new state-of-the-art rowing shell, named *The Gos*. The RIT boat is number seven of the new Resolute racing shell series; experts say the boat sets a standard for sophisticated design strategies. *The Gos* is made of a carbon composite that does not require internal ribs and offers a faster and stiffer construction.

Thomas Gosnell has been a member of RIT's Board of Trustees since 1977, chairman from 1987 to 1992 and is now chairman emeritus.

The award ceremonies for all eight divisions will be conducted on the boathouse dock, beginning at 4 p.m. For complete details, check out the Stonehurst Capital Invitational Regatta website at www.rit.edu/~934www/Stonehurst.

Grebinger presents Kern Lecture



Paul Grebinger

Paul Grebinger, professor of anthropology at RIT, presents "Labyrinth of Cocaine, Colombia in the Age of Drugs" at 7:30 p.m. on Oct. 17 in the Skalny Room of the Interfaith Center, Student Alumni Union. His talk, the second in the 1996-97 William A. Kern Lectures on Intercultural and International Issues, focuses on the Fall Quarter theme of Latin America.

Grebinger first became intrigued with the "rich diversity of Latin American cultures" when he worked for the Pan American Coffee Bureau on Wall Street while an undergraduate student at

Columbia University. Years later, as a college professor, he helped with a student study project in Colombia. For 15 years after that, he led student groups to Colombia and took part in exchange programs with the Universidad Externado and the Universidad Nacional of Colombia.

The exchange programs ended in 1992 due to the escalating violence in Colombia associated with the growing power and influence of the Medellin drug cartel. Grebinger now "visits" Colombia only in his class on "Culture in Crisis," part of the Social Change in a Technological Society concentration in the College of Liberal Arts.

"Charmed" by Colombia and its people, he continues to try to understand the "apparent paradox of a people and culture of such great promise losing their way in the labyrinth of cocaine."

The lecture—free and open to the public—concludes with a reception and round table discussion. The United Nations Association of Rochester and the Rochester International Friendship Council cosponsor the lectures with the Kern Professorship.

News & Events goes on-line

News & Events is now digital! You could be reading the issue of *News & Events* you have in your hands, on your computer screen. RIT's bimonthly news publication is available to World Wide Web surfers at RIT On-Line: www.rit.edu. On most main pages, there is a toolbar at the bottom of the page with an RIT News button. Click there, and you'll have the option of selecting from *News & Events*, news releases from University News Services and eventually, a planned RIT bulletin board.

News & Events has been available on the web since March and the main menu page allows viewers to select the current issue, or check past months through an archive

system. The pages were designed by students Nate Buck and Corinna Ng, working for University News Services and the RIT On-Line Committee.

Most issues are available electronically, the day before they are delivered on campus.

RIT On-Line has grown dramatically over the past year with literally thousands of pages available to users, including: undergraduate and graduate catalogs, an interactive Admissions application and hundreds of pages developed by individual campus departments.

Look for the *News & Events* on-line address on page four in the staff box above the mailing label in every issue.

Hall of Fame

continued from page 1

soccer and ice hockey, earning her recognition as the Senior Athlete of the Year. She set school soccer records for the most shutouts in a season (nine in 1985) and career (19 from 1984-87). As a hockey defender she tallied 43 points—ranking 12th on the Tigers' career scoring list—and was selected to play in the prestigious Senior Hockey All-Star Game. She works as a canine officer for the U.S. Secret Service Uniform Division in Washington, D.C.

Kevin McCarthy (College of Business '84) was named Senior Men's Athlete of the Year in 1984-85 after collecting 85 points, ranking fourth on RIT's career scoring list. He was a two-year captain, and was voted the team's most valuable player in 1983 and 1984. He was also recognized as a four-time All-Conference selection and second team All-State his senior year. McCarthy serves as dean of academic affairs at Bryant & Stratton (Henrietta campus).

The RIT Sports Hall of Fame was founded in 1969 to honor former athletes, coaches, administrators and others' accomplishments in intercollegiate athletics. A function of RIT Alumni Relations, the Hall of Fame now has honored 98 inductees.

For information on attending this year's RIT Sports Hall of Fame dinner, contact Jeff Rowoth, alumni relations, at -4975.



SURFING THE NET TOGETHER . . . Vint Cerf, "Father of the Internet," (left) autographed the computer keyboard of Brian Mayer, an information technology student, when Cerf spoke at NTID Oct. 1.

CALENDAR

Oct. 12—"Meet the NRS Scholars" event: sixth annual awards ceremony with NRS Scholars and their parents, followed by reception, 4:30-6:30 p.m., location to be announced

Oct. 14—Fall Open House: prospective students and their families will be on campus for the day. They will visit and tour academic departments, campus and residence halls, eat at Gracie's and hear a financial aid presentation, 8 a.m.-4 p.m.

Oct. 24—Lecture: "Failing at Fairness: Gender Bias in the Classroom," David Sadker will present how research over the last decade has uncovered fascinating insights into how teachers instruct boys and girls differently; 3-4 p.m., College of Science, Room 1250

DEATHS

George C. Gordon

George C. Gordon, a 1964 alumnus of the woodworking and furniture design program in the School for American Crafts, passed away on Sept. 23.

An attorney who left the legal field to turn to woodworking, Gordon earned his bachelor's degree and built a shop, The Three Crowns, in Pittsford, with the help of SAC friend, professor and fellow alumnus Doug Sigler. Gordon designed and produced custom furniture for many clients including Rochester Telephone. He also offered crafts by area artists, and sold high-quality woodworking equipment. "Woodworkers from all over the country would order supplies from George," says Sigler, noting his former classmate's penchant for getting "the best" tools and hardware in his mail-order catalog for his friends.

"George had a real sentimental place in his heart for the people he studied and worked with at RIT," says Bill Keyser, a friend and one of his woodworking professors. "He said to me the last time I saw him this summer: 'It was the happiest day of my life when I decided to go into woodworking.'"

In his memory, Gordon's family is setting up an RIT scholarship. For information, call Vicki Dodds at -6566.

News & Events is produced biweekly by University News Services/University Publications. Please send comments to *News & Events*, University News Services/University Publications, Eastman Building.

Editor: Sarah Breithaupt **Copy Editor:** Laura J. Mikols **Designer:** Dona Haag **Contributing writers:** Sarah Breithaupt, Neil Fagenbaum, Laurie Maynard, Bill McKee, Laura J. Mikols, Brad Rye, Katie Schmitz **Typographer:** Sarah Southgate

Look for *News & Events* at RIT On-Line: www.rit.edu/RIT/UR/UNS/Proj/NewsEvents on the World Wide Web.

R.I.T.
Rochester Institute of Technology
One Lomb Memorial Drive
Rochester, NY 14623-5603

NEWS
events