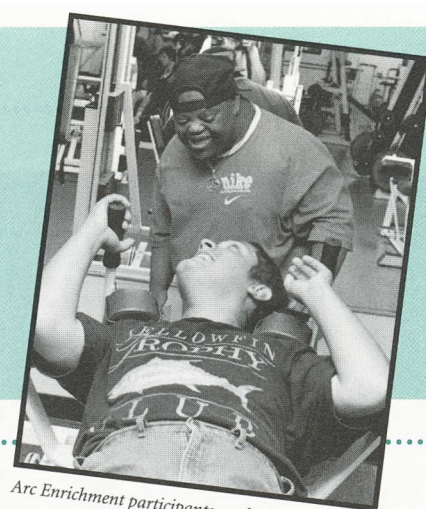


# news & events

Vol. 29, No. 18

August 7, 1997

- 2 New appointments
- 3 Soap box racers accept scholarships
- 3 Lucius Gordon Drive opens
- 4 Seniors display metal art at downtown gallery
- 2 Campus offers enriching experiences



Arc Enrichment participants work out.

## CIMS Center for Remanufacturing is off to a busy start

With a dozen projects underway, RIT's new Center for Remanufacturing and Resource Recovery is off to a busy start.

Officially established July 1 as part of the Center for Integrated Manufacturing Studies, the remanufacturing effort was developed to provide technical assistance to industry and to conduct applied research in this emerging field. A \$4-million grant for the center has been approved by the U.S. Senate and is now awaiting approval by the House of Representatives.

"Remanufacturing is the ultimate form of recycling," says Nabil Nasr, head of the new center. "Through the process of remanufacturing you recover the cost of material, labor, energy, and capital that went into the making of the product the first time around. This is often as much as 85 percent of the original cost."

Remanufacturing involves much more than simply salvaging reusable parts at the end of a product's life. Remanufacturing requires thoughtful planning and excellence in engineering that begins before a product is built.

Nasr explains that in the automotive business, the remanufacture of automobile parts has been a reliable source of replacement parts for decades. More recently, the

copier and printer industry has offered the consumer the alternative of purchasing remanufactured toner cartridges.

Current figures list more than 73,000 remanufacturing establishments in the United States with annual gross sales in excess of \$53 billion.

Nasr, Earl W. Brinkman Professor and center director, began focusing on remanufacturing in 1991. He discovered that, while many universities were working on recycling, very little research was being done on remanufacturing.

His work caught the attention of the auto remanufacturing industry, one area of American industry that has a long tradition in this area. In 1995, RIT received a grant from the Automotive Parts Rebuilders Association to fund a case study of remanufacturing clutches and other products.

Not long after that, based on Nasr's "Regenerative Life Cycle of a Product" model, the Department of Energy commissioned RIT to conduct an industry assessment of remanufacturing technologies.

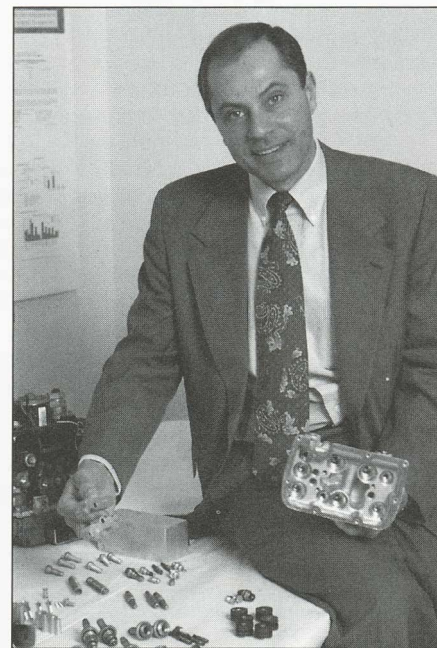
With the official designation as a center within RIT CIMS, Nasr expects to generate more interest in remanufacturing. He's working with representatives of President Clinton's Council on Environmental

Quality and other federal and state government officials as well as people in industry. The remanufacturing center currently is working on projects with companies including Eastman Kodak Co., Xerox and Stone Construction Equipment.

"We're excited about what we can do and the opportunities now open to us," says Nasr. "It makes us feel good. When we go home at the end of the day, we feel like we did something worthwhile."

The Center for Remanufacturing and Resource Recovery has a staff of 12 including engineers, technicians and co-op students. In addition, faculty members from RIT's College of Engineering and other colleges lend their expertise. The center's facilities include an 8,000-square-foot work bay equipped with multi-phase power and computer networked stations, automated and semi-automated assembly/disassembly systems, high-tech cleaning equipment and state-of-the-art measurement and testing devices.

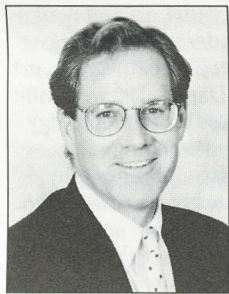
Even the office furniture serves as a model of remanufacturing. The ergonomically designed chairs, work stations, conference tables, file cabinets, bookcases and even the cubicle partitions are all remanufactured. The furniture was donated by



Nabil Nasr

Davies Office Refurbishing Inc. of Albany, the largest independent remanufacturer of systems office furniture in the United States.

## Chairman and founder of Stonehurst Capital appointed to the Board



Arthur Gosnell

Arthur Gosnell, chairman and founder of Stonehurst Capital, Inc., has been elected to RIT's Board of Trustees.

At Stonehurst Capital, Inc., Gosnell is responsible for all activities, but principally orchestrating and funding small- to medium-sized management buyout and venture capital transactions.

Stonehurst Capital, founded in 1990 and located in Bedford, N.Y., is the general

partner of Stonehurst Ventures L.P., which is the entity that executes the transactions. In September 1991, Stonehurst made its first investment, becoming majority partner in S&E Hospitality, which, over the next 10 years, will construct and manage 75 super-budget "Microtel" motels in the eastern United States.

In 1996, Stonehurst became the new sponsor of the local collegiate rowing competition co-hosted by RIT and the University of Rochester—the Stonehurst Capital Invitational Regatta.

From 1983 to 1989, Gosnell worked for The Research Institute of America, Inc., where he held various marketing positions culminating with vice president of marketing.

He has been on the board of directors of the Lawyers Cooperative Publishing Company and The Research Institute of America, Inc. Gosnell has an M.B.A. from

the Wharton School at the University of Pennsylvania and a B.A. from St. Lawrence University.

Gosnell is the son of RIT's former chairman of the board, Thomas Gosnell.



**TRUSTEES PULL TOGETHER . . .** During the Board of Trustees meeting in July, trustees had the opportunity to visit the Red Barn and participate in a sample exercise, "Toxic Waste." The group was given a problem to solve as a team that was mentally challenging and physically involving (moving things and themselves around). Their task was to "purify eight ounces of toxic waste," each individual was given a piece of information and the team needed to come together collectively and accomplish the goal. The Red Barn is a group development and leadership facility on campus.

## Costenbader heads off on Fulbright Scholarship to set up doctoral degree program in Kenya



Virginia Costenbader

Virginia Costenbader has won a Fulbright Scholarship to Kenya for the 1997-98 school year. Director of RIT's School Psychology graduate program and a faculty member since 1987, Costenbader will

help set up a doctoral degree program at Laikipia College of Edgerton University in Nyahururu, Kenya.

"I plan to teach, consult on the proposed doctoral program and conduct research at the college," says Costenbader, who credits her interest and opportunity in Kenya to former student and 1991 alumnus Father Stephen Mbugua Ngari, a Kenyan priest. Ngari's thesis, which described Kenya's need for testing and education of children with special learning needs, intrigued her and led to plans for the Fulbright project.

As part of her project, Costenbader will train Kenyan educators in use of two

(Continued on page 4)



**WELCOME TO RIT . . .** Cari Minnamon from Walworth, N.Y., a member of RIT's newest freshmen class, cools down with some new friends at the Freshmen Summer Orientation ice cream social sponsored by the Center for Student Transition and Support. This year's orientation was held July 7-8 and July 14-15.



## N E W A P P O I N T M E N T S

## Cann heads Counseling Center

Laura G. Cann has been appointed director of RIT's Counseling Center, effective August 1. Cann succeeds Eleanor Rosenfield in the role, who has accepted the position of freshman seminar coordinator at NTID.

Cann joined the Counseling Center in 1978 and was appointed assistant director in 1988. She has been instrumental in planning and developing counseling services for Counseling Center clientele and has served on several Institute committees, such as the Strategic Planning Steering Committee and Provost's Priorities and Objectives Committee.

In addition, Cann co-chaired the Student Growth and Development Task Force resulting in a more student-centered vision for RIT and has chaired the Student Quality of Life subcommittee. She has also been elected to leadership positions on faculty and policy councils and was involved in the establishment of the Student Ombudsman Office at RIT and the Women's Career Center in the city of Rochester.

Donna C. Rubin has been appointed associate director of the Counseling Center. Rubin joined NTID Psychological Services in 1979 as a mental health counselor and assistant professor.

"They both have already made tremendous contributions to RIT and are well suited for these challenges," Linda Kuk, vice president for Student Affairs, said of the appointments. "In their new roles, they will continue to provide significant leadership to this important student service and will be wonderful resources to the entire RIT community."



Laura G. Cann

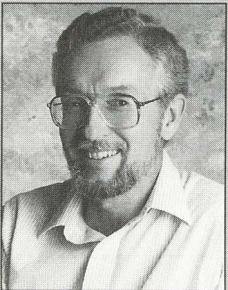
## Grebinger to lead division

Paul Grebinger, an 18-year RIT veteran, became chair of the Behavioral Science Division July 1. The division enrolls 200 students in three degree programs and supports core liberal arts requirements for RIT's student body.

"We're pleased to bring Professor Grebinger into this position," says William Daniels, dean, College of Liberal Arts. "His excellent credentials and longtime RIT involvement well suit the needs of this growing division."

During his RIT tenure, Grebinger has taken on a number of administrative challenges such as chairing the Department of Sociology/Anthropology, coordinating the International Cooperative Education and Study Abroad program, and directing the Gannett Lecture Series. Committees he has served on include Senior Seminar/Gannett Lecture, Promotions Advisory, Tenure, and Curriculum.

"I look forward to this new role," says Grebinger. "And I greatly appreciate the support expressed by my colleagues. We are in an exciting time of redesign and growth as we move to a revamped general education curriculum in the College of Liberal Arts. A primary challenge will be to discover new and interesting ways for our faculty to contribute to curriculum to



Paul Grebinger

help RIT students gain perspectives of the behavioral sciences."

Grebinger previously taught at Eisenhower College and Herbert H. Lehman College of the City/University of New York. He earned his B.S. degree from Columbia University and his Ph.D. from the University of Arizona.

Pursuing a lifelong passion for cultural study, Grebinger has researched and published papers on Rochester's button manufacturing industry, Elizabeth Cady Stanton's vision for equal rights households and, with his wife Ellen, produced an award-winning full-color catalog, *To Dress and Keep the Earth: The Nurseries and Nurserymen of Geneva, New York* on an exhibit for the Geneva Historical Society.

"Paul's many interests in cultures and people give him the natural ability to work closely with the faculty in this division," says Murli Sinha, outgoing chair who stepped down to complete a book on AIDS and aging. Sinha will chair the Department of Anthropology/Sociology.

The Behavioral Science Division houses programs or classes in graduate school psychology, the new psychology B.S. degree, sociology, anthropology and social work.

## Two art chairs appointed

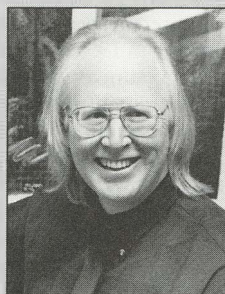
RIT's School of Art and Design has two new chairs in place as of July 1. Thomas Lightfoot has become chair of the Fine Arts Department and Nancy Ciolek now heads the Graphic Design Department. Both faculty members joined RIT in 1988.

Known for his expertise in creativity, from the art classroom to personal work to his workshops for professional engineers, Lightfoot holds an Ed.D. in college teaching of studio art from Columbia University Teachers College.

"I am moving into this chair position at a time of great potential and opportunity for the fine arts at RIT and a time of great change for the College of Imaging Arts and Sciences," says Lightfoot. He has taken a leading role in the redesign of curriculum for RIT's art, photography and printing schools. "We are about to see new opportunities for collaboration between many of the college's programs. Working together, the fine arts at RIT can be a stronger, more visible force propelling this university to the forefront of the art world."

Ciolek, who holds a master's degree in graphic design from Indiana State University, helped develop the new informational CD-ROM on RIT's art schools. She has served on numerous RIT committees and as chair of the art schools' graduate committee.

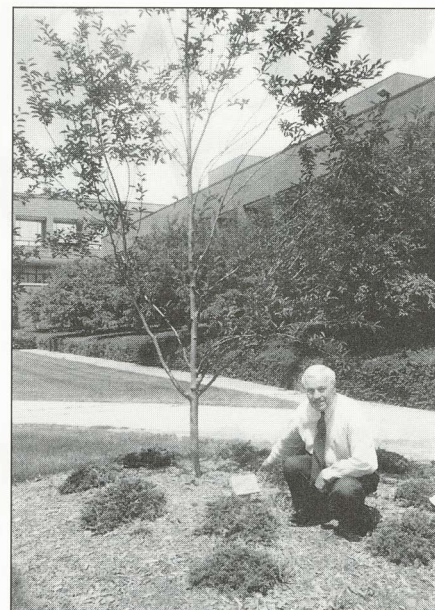
"Graphic Design is a strong career field and has become even more dynamic with digital imaging and multimedia. It's crucial that designers be proficient with new technologies—a continuous part of RIT's graphic design education," says Ciolek. The department, which includes Computer Graphics Design programs, has 400 students, the highest enrollment among RIT's five art departments.



Thomas Lightfoot



Nancy Ciolek



**TREE DEDICATION . . .** John Sturges, member of the Board of Trustees, kneels by the tree dedicated to his mother, Edith Neblette, commemorating her 90th birthday. The Canada Select Red Cherry, donated by cousins Aileen and Doug MacMillan, stands in front of the Gannett Building.

## Finger Lakes show displays RIT works

The prestigious Finger Lakes Exhibition held at the Memorial Art Gallery through Sept. 7 includes works by 15 alumni/faculty and two students from RIT. The show features 56 pieces chosen from 784 entries by 413 artists. And, among the nine awards given "for exceptional merit," RIT exhibitors won five.

The RIT exhibitors are Milford Apetz, who studied at RIT; William Baran-Mickle, metalcrafts and jewelry alumnus; Jennifer Borg, woodworking and furniture design alumnus; Luis R. Crespo, glass alumnus; Marilyn Feinberg, weaving and textiles alumnus; Joan Fitzgerald, art and design alumnus; Asher Charles Hoffman, metalcrafts and jewelry student; T. F. Insalaco, painting alumnus; William Keyser, woodworking and furniture design alumnus and professor; Louis Lanzi, art and design alumnus; Max L. Lenderman, weaving and textiles professor; Elizabeth Lyons, art education alumnus; Dan Malczewski, fine arts alumnus; Douglas D. Miller, biology alumnus; Susan Myers, imaging arts alumnus; John Retallack, photography alumnus and associate professor; and P.A. Sears, graphic design student.

Faculty honors: Retallack's photographic work won double duty before the show opened, as exhibit material and as art for the annual brochure; and Lenderman took the Ida Abrams Louis Award, for "M. Deco #1" inspired by Native American head-dresses. Other RIT winners: Apetz received the Dorothy Cripps Salo Memorial Award, for "Vosges Requiem"; Borg earned the Averell Council of the Memorial Art Gallery Award, for "Archeology"; Insalaco won the Gertrude Herdle Moore/Isabel Herdle Award, for "Childhood: The 4th of July"; and Malczewski won the Memorial Award of Excellence, for his wood and metal sculpture.

## RIT hosts three successful enrichment programs

RIT proudly hosted three summer enrichment programs geared towards exposing students to the college experience.

The Visual Arts Experience, held July 7-18, presented the opportunity for teen artists from seven Rochester area high schools to learn about applying their talents to careers. The program, in its fourth year, was funded by a grant from the Frontier Corporation, and RIT's schools of Art and Design and American Crafts.

Classes, taught by RIT graduate students and faculty, created studio experiences for budding virtuosos in figure drawing, painting, jewelry and metalcraft, ceramics, cold glass, computer graphics, photography and printmaking.

"These talented students have realized that there is life after high school in the art field. There are so many wonderful opportunities available to these artists. One of the goals of the program is to show them the endless career possibilities in the visual arts," says Marianne O'Loughlin, RIT coordinator of the Visual Arts Experience and assistant professor of graphic design and illustration.

The East House Enrichment Program, a pilot project for RIT, offered a college experience to 30 people recovering from mental illness, alcoholism and other substance abuse. Residents of the East House facility, a Rochester-based, non-profit mental health agency, took courses on campus ranging from money manage-

ment to general health and wellness to interviewing to resumé writing skills.

"These residents deserve the chance to experience campus life and learn valuable skills that will help them get their feet back on the ground," says Gail Begley, director of vocational services for East House.

RIT faculty and staff joined members of the Rochester community as volunteer instructors for the East House program, which ran July 7-17.

The Arc of Monroe County's Enrichment Program began with "move-in," Sunday, July 20, as the residents prepared for their week-long college experience.

The highly successful enrichment program for developmentally disabled adults, completed its sixth consecutive year with RIT faculty, staff and students lending a hand to make the college experience—from classes to graduation—a reality.

"The Arc Enrichment Program promotes self-esteem and self-confidence in all of our clients. It's remarkable witnessing the enthusiasm and drive they possess when it comes to learning," says Michelle Bubel, coordinator of the program.

Students in the Arc Enrichment Program chose from classes such as digital photography, health and first aid, computer graphics, personal safety, foreign languages, aerobics, scientific studies, food service, weight training and creative writing. The Arc students also had the opportunity to "crash" in their dorm rooms after a long day of classes.

At the session's end, the students donned caps and gowns for a traditional graduation ceremony.



**NRS HONORS TRUSTEE . . .** With more than 300 people in attendance at the Rochester Yacht Club on July 17, Frank Hutchins, chairman emeritus of RIT's Board of Trustees, received the 1997 Nathaniel Rochester Society Award, the society's highest honor. It is given annually to recognize individuals who have contributed to the advancement of RIT in an outstanding and significant manner. Pictured (from left to right) are Jean and Michael Morley, 1997-98 NRS chairs; Hutchins, with his wife, Jeanne; President Simone; and William Whiteside Jr., chairman of the Board of Trustees. NRS officially celebrated its 30th anniversary at the Summer Gala.

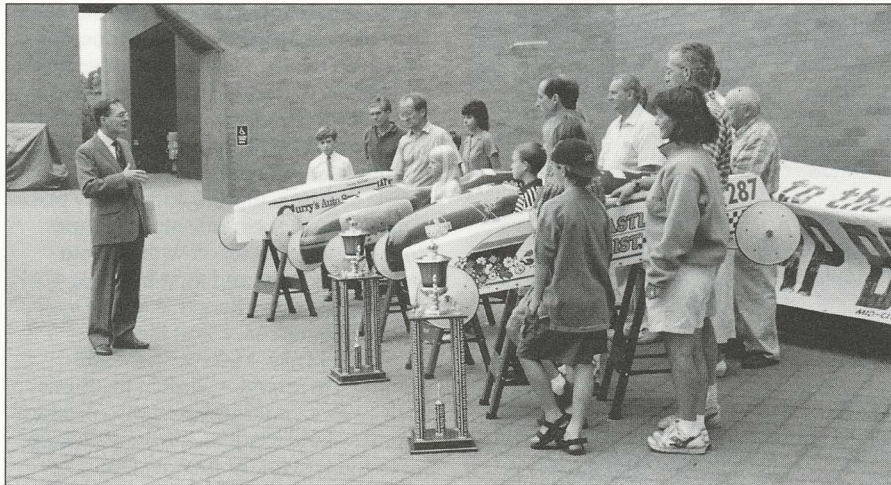


## Derby winners awarded scholarships

RIT has awarded scholarships to the top four finishers of the Greater Rochester Soap Box Derby, held in Irondequoit on May 31 and June 1. The scholarships award the young racers' successful applications of knowledge and skills associated with solving engineering and design problems.

In a ceremony held July 23 on campus, the four winners—Laura Cole, age 10, of Rochester; Jim Shubsda, age 11, of Lewiston; Chris Meteyer, age 12, of Rochester; and Logan Rockcastle, age 13, of Middlesex—each received \$5,000 certificates to apply to tuition if the students decide to attend RIT.

President Simone praised the students' determination and focus, citing similarities between the youngsters' accomplishments and those of RIT's award-winning Society of Automotive Engineers Formula One racing team, comprised of engineering students. "Through this competition, you have learned that you can only gain the highest levels of success through a commitment to excellence. These are values we try



President Simone congratulates the winners of the Greater Rochester Soap Box Derby and their families on campus July 23. The four winners were each presented with \$5,000 scholarships in recognition of their hard work, determination and commitment."

to instill in our own students at RIT."

The four winners are competing in the

national championships Aug. 4–10 in Akron, Ohio.

## Roadway opens dedicated to years of generosity by Board's honorary vice chairman Lucius Gordon

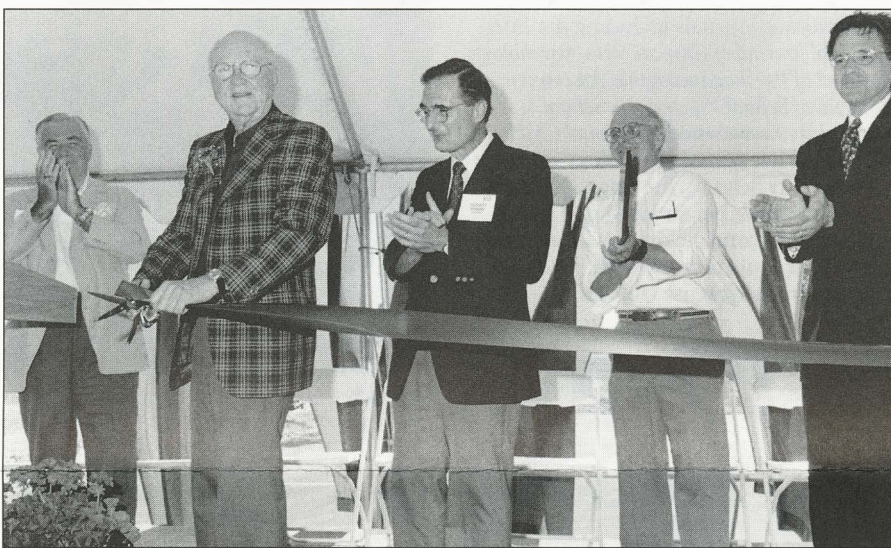
A roadway commemorating the vision, initiative and financial support of Lucius R. Gordon, honorary vice chairman of the Board of Trustees, officially opened at a ceremony July 17.

"Bob Gordon has been a most generous benefactor of RIT and there is probably no major effort RIT has undertaken to which he has not made a significant contribution," said President Simone, citing several examples of Gordon's contributions.

In recognition of his support, the Gordon Administrative Wing of the Hale-Andrews Student Life Center is named in honor of Bob and his wife, Tony. Gordon is also one of the major contributors to the new addition of The Gosnell Building and along with his brother Fred, also an RIT trustee emeritus, established the Russell C. McCarthy Professorship in Engineering Technology.

In May 1992, Gordon presented a proposal that lead to the development of RIT's Business and Technology Park, site of the dedication ceremony.

Gordon has been a trustee for several other prominent organizations, including



Lucius Gordon, emeritus board member, cuts the ribbon officially opening the roadway bearing his name, near the site of RIT's Business and Technology Park. Pictured (from left to right) are William Whiteside Jr., chairman, Board of Trustees; Gordon; President Simone; William Dempsey, president and dean, RIT's American College of Management and Technology in Croatia; and James Watters, vice president, Finance and Administration.

Rochester Savings Bank, Hillside Children's Center and Genesee Hospital.

He also served as a director of Rochester Telephone Corporation and United Way.

## CIMS to host international technical conference

RIT's Center for Integrated Manufacturing Studies will host an international audience in September for the second annual International Technical Conference conducted by the Next Generation Manufacturing Systems (NGMS) Intelligent Manufacturing Systems (IMS) Program. NGMS-IMS is an international partnership formed to propose and conduct pre-competitive research and development projects. The conference is scheduled for September 22–25 and will attract attendees from the United States, Europe and Japan, as well as 13 universities from around the world involved in manufacturing research.

The Consortium for Advanced Manufacturing-International (CAM-I) is the international coordinating partner for NGMS-IMS and is headquartered in Bedford, Texas. CAM-I is a not-for-profit, cooperative membership organization with more than 75 industrial, academic and government organizations participating in the CAM-I management, technology, education and enterprise integration programs. The group has a branch office at RIT, staffed by NGMS-IMS Program Director Ray Limoges.

The first NGMS-IMS International Technical Conference was held in Magdeberg, Germany, in 1996. RIT was selected to host the 1997 conference based on the strength of its manufacturing programs.

According to Limoges, the 1997 conference will provide a forum for the sharing of technical initiatives, and research and

development efforts related to the technical agenda of the NGMS-IMS program. Besides seminars, demonstrations and presentation from an international group of speakers, the conference will also

include tours of some of Rochester's premier manufacturing facilities.

The 1998 conference is scheduled for Gothenberg, Sweden, and the 1999 conference will be held in Tokyo, Japan.

## Luce Scholarships encourage women in science, engineering

To encourage women to pursue careers in science and engineering, the Henry Luce Foundation has awarded \$93,000 to support three two-year Clare Boothe Luce Undergraduate Scholarships at NTID. The presence of Clare Boothe Luce scholars on the RIT campus will significantly strengthen NTID's ability to continue to attract and retain the best and brightest deaf and hard-of-hearing women from across the country. These scholars will further distinguish the science and engineering programs at RIT as the leaders in the movement to advance deaf and hard-of-hearing women in science and engineering careers.

The scholarships will be awarded to deaf and hard-of-hearing women matriculated in the last two years of a baccalaureate degree program in science or engineering at RIT. Qualified students must have a cumulative grade point average of 3.2 or better out of 4.0 as well as 3.2 or better in their principal fields of study. Successful

candidates also will demonstrate evidence of leadership qualities through participation in campus activities as well as definitive career goals in their fields of study, especially the pursuit of graduate education.

This new partnership between the Henry Luce Foundation and NTID will further advance each organization's commitment to benefit current and future generations of women in the fields of science and engineering, where women continue to be under represented.

Clare Boothe Luce, who established the Clare Boothe Luce Program for Women in Science and Engineering through a bequest, was the widow of Henry R. Luce, co-founder of Time Inc., which publishes *Time*, *Fortune* and *Life* magazines. She was a Renaissance woman, a symbol of women's accomplishments and potential, whose unique career spanned seven decades in the professions of journalism, politics, theater, and diplomacy.

## DONATIONS

### Large-format printer donated to NTID

To support the development of electronic publishing skills at the world's largest technical college for deaf and hard-of-hearing students, Graphic Enterprises of Ohio, Inc. recently donated a unique large-format printer to NTID.

The Graphic Setter 1824C, a digital printer used to output documents up to 18 x 24 inches in size, was contributed to the High Technology Center for Electronic Publishing and Printing, which is part of NTID.

"The donation of the Graphic Setter 1824C provides students with access to large format, high-resolution output, which will enhance and extend their skills in producing publications up to 18 x 24 inches," said Michael Kleper, professor and Industry Liaison for the NTID High Technology Center.

The center is totally supported by industry contributions, which approach \$2.5 million as of April 1997. These contributions make possible the preparation of deaf students in numerous majors, including electronic publishing and printing, applied art and computer graphics, and imaging technology. Many of the students go on to find employment in areas related to electronic publishing, such as desktop publishing, digital scanning, and digital proofing.

The center is a unique electronic environment where learning and research activities are conducted in imaging and digital publishing technologies. As such, the center provides students with access to technologies that are not universally available in the technical laboratories of academic programs because of the high cost. The environment is totally digital and contrasts with other laboratories that use more conventional production processes.

"The Graphic Setter 1824C will provide students with skills in building large-format publications, and the capability to print them without tiling pages together or printing them in reduced sizes. The printer will be the only device of its kind at the Center," said Kleper.

Graphic Enterprises, in business since 1970, manufactures copying and printing equipment as well as develops prepress software solutions and services. The company is based in North Canton, Ohio.

### Kern conference focused on intercultural communication

The third conference on intercultural communication, "Communication, Technology and Cultural Values," co-chaired by RIT Kern Professor Michael Prosser and K.S. Sitaram of Southern Illinois University at Carbondale, drew 75 people to its keynote talk and roundtable during the July 10–12 gathering.

Tapio Varis, director of media education, University of Tampere, Finland, gave the keynote address, relating the topic to contemporary Europe. A number of RIT faculty and students joined an international and country-wide roster of presenters, participants and diverse attendants including an RIT class in Human Communication.

Ablex Publishing Company will produce three books based on the conferences and selected papers, says Prosser. Look for *Multiculturalism, Cultural Diversity and Global Communication*; *Intercultural, International and Global Media*; and *Communication, Technology and Cultural Values*.



## D E A T H S

## Robert J. Strassenburgh II

Robert J. Strassenburgh II, an emeritus member of RIT's Board of Trustees and former president and chairman of Strassenburgh Laboratories, died June 10.

Strassenburgh, of Pittsford, was elected to the board in 1961 and served on several committees, including university relations and buildings and grounds.

He was a charter member of Nathaniel Rochester Society and a generous supporter of the Hale-Andrews Student Life Center and Kilian J and Caroline F Schmitt Interfaith Center.

"He made an extraordinary contribution to RIT and to the entire Rochester community," says William Whiteside Jr, chairman of the Board of Trustees.

In addition to his service to RIT, he was a member of numerous boards including Highland Hospital and Highland Hospital Foundation, Center for Governmental Research, Rochester Museum and Science Center, Rochester Philharmonic Orchestra and Philharmonic Fund, Security Trust, Dollinger Corporation and American Red Cross-Rochester/Monroe County Chapter. In 1991, Strassenburgh received the Highland Heritage Award from Highland Hospital's Foundation and a philanthropy award from the Rochester Area Foundation in 1996.



Robert J. Strassenburgh II

## Fulbright Scholarship

continued from page 1

nonverbal aptitude tests and will start data collection to help establish Kenyan standardization of the tests. "Standardizing a nonverbal aptitude measure in an ethnically diverse, emerging country will also enrich the courses in psychoeducational assessment I teach at RIT," she explains. Kenyan children come from 10 major ethnic regions and speak more than 40 different tribal dialects as well as the national tongue, Kiswahili, a multiple-dialect language.

"In order to adapt my material to the needs of students and professionals in Kenya, I will need to be sensitive to the many cultures represented in the country," adds Costenbader. "In my own experience

I have consulted with educational professionals and worked with children in settings as disparate as rural Appalachia and inner city Rochester."

Costenbader has published her research in numerous journals including the *International Journal of Clinical Neuropsychology*, *Journal of Psychoeducational Assessment*, *Journal of School Psychology*, *School Psychology Review* and *Exceptional Children*. She began her school psychology career in Geneva City Schools, moving to Newark Central Schools before joining RIT. She holds a B.A. from Dickinson College and an M.S. in education and a Ph.D. in psychology from Syracuse University.

## N E W S M A K E R S

- **Andrew Davidhazy**, chair, Imaging and Photographic Technology, School of Photographic Arts and Sciences, College of Imaging Arts and Sciences, was the sole judge of the 1997 Lilac Festival Photo Contest sponsored by the City of Rochester Lilac Festival Committee. He judged entries submitted by visitors to the Lilac Festival on June 9 and selected first, second, and third place winners and five honorable mentions.

- **Susan Foster**, associate professor, Department of Educational and Career Research, NTID, received the 1996-97 Phi Delta Kappa Award for Research from the organization's Rochester chapter in January in recognition of her "long-term contributions, significant accomplishments, and demonstrated potential for future service." Over the years, she has been a leader and team player in several of NTID's most important research projects, including studies related to deaf people in the workplace and the Americans with Disabilities Act;

how deaf and hearing students interact with each other; the partnership between students and teachers in their classes; and the effects of mainstreaming deaf students.

- **Thomas D. Hopkins**, Arthur J. Gosnell Professor of Economics, College of Liberal Arts, Hopkins wrote op-ed articles on the Clean Air Act that appeared in *The Wall Street Journal* on May 21 and in the *Christian Science Monitor* on July 11. He was interviewed by NPR's "Morning Edition" broadcast nationally May 17. He also wrote "An International Comparison of Regulatory Analysis Standards" published in May by the Center for the Study of American Business, Washington University in St. Louis.

- **Patricia Pitkin**, director of Wallace Library, served as a panelist at the Association of College and Research Libraries' meeting in Toronto in May. The panel discussion was on "Change Approach and Process Differences" in a large academic library.

## M.B.A. students win honorable mention in national marketing competition

A team of three College of Business M.B.A. students has won an honorable mention in a national marketing competition.

The team of Amy Brown, Ondrej Frydrych and Animesh Narang received one of eight honorable mentions awarded in the 1997 Leonard J. Raymond Collegiate ECHO Competition, sponsored by the Direct Marketing Educational Foundation.

For the competition, the student teams developed campaigns for a client, this year American Collegiate Marketing. Gold, Silver and Bronze ECHO Awards were won by teams from California State University in Fresno, the University of Northern Colorado and Kennesaw State University in Georgia.

The students added the accomplishment to their resumes as each worked co-ops this summer. Brown finished a co-op at Xerox Corporation in July, accepts her degree in August and has been hired by Gleason Works as a market analyst. Frydrych earned his degree in May, is finishing a co-op at Xerox and then

returns to the Czech Republic. Narang is working on a co-op at Nortel and returns to RIT in the fall to complete coursework.

## Lewis family accepts posthumous award

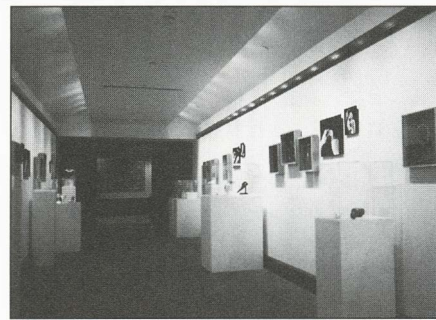
The family of Richard B. Lewis, former chair of RIT's Criminal Justice program who died suddenly this spring, accepted a posthumous award for Lewis's lifelong peace activism from the Center for Dispute Settlement of Rochester.

Andrew Thomas, executive director of the center, gave the award to Mrs. Jill Lewis and son Alex at the annual awards ceremony on May 29. He cited Lewis's many years as a certified mediator/arbitrator with the center, his work with the Citizen Review Board and on the Task Force to Reduce Violence.

## Seniors display diverse metal works at B&amp;L

"As distinctive and well-executed as any professional show in Rochester," says Len Urso, metals professor in the School for American Crafts. Visitors can judge for themselves the works by seven of Urso's 1997 seniors in a free summer exhibit at The Gallery at One Bausch & Lomb Place in downtown Rochester.

The diverse sculpture and jewelry pieces range along the corridor of the second floor gallery, each set off with a photograph of the artist and their hands at work. The artists—Steve Berger, Angela Dulac, Heather Danielson, Danit Flexner, Stephanie Muka, Melissa Sciera and Jennifer Townsend—work in mediums such as silver, gold and bronze to produce one-of-a-kind chalices, bowls, wall sculptures and jewelry. Anna C. E. Douglas, 1995 photographic illustration alumnus, made the artists' photos while wood



A view of the senior metalsmith exhibit at The Gallery at One Bausch &amp; Lomb Place.

students Greg Heintz and Anthony Valente created the display boxes.

The "B.F.A. Metalsmithing Exhibition," open 7 a.m. to 7 p.m. weekdays and 9 a.m. to noon Saturdays, runs through August.



**CELEBRATING 10 YEARS...** At the recent annual meeting of RIT's Athenaeum, the organization's founders held an informal panel discussion with members. The founders (from left to right) are, Abe Hollander, Joyce Herman, Wayne McKusick, Dorothy Wadsworth Annett and Mark Blazey. Also during the annual meeting supporters and course leaders were recognized. The Athenaeum, an organization run by and for men and women age 50 or older who seek continued intellectual challenges, networking opportunities and social activities, is celebrating its 10th anniversary.

*News & Events* is produced biweekly by University News Services/University Publications. Please send comments to *News & Events*, University News Services, Eastman Building, or call 475-5064 or fax 475-5097. **Editor:** Sarah Breithaupt **Designer:** Dona Haag **Contributing writers:** Sarah Breithaupt, Vienna Carvalho, Neil Fagenbaum, Kathy Lindsley, Laurie Maynard, Bill McKee, Katie Schmitz **Typographer:** Sarah Southgate

When calling any campus number referred to in *News & Events* articles from off campus, use the 475-prefix.

Look for *News & Events* at RIT On-Line: [www.rit.edu/UR/UNS/Proj/NewsEvents](http://www.rit.edu/UR/UNS/Proj/NewsEvents) on the World Wide Web.

R.I.T.  
Rochester Institute of Technology  
One Lomb Memorial Drive  
Rochester, NY 14623-5603

news  
&  
events