

NEWS & EVENTS

Vol. 24, No. 18

April 8, 1993

Inauguration Marks Beginning of 'Simone Era'

With the placing of the ceremonial sterling silver Collar of Authority upon his shoulders, Dr. Albert J. Simone will be officially installed April 15 as RIT's eighth president.

The two-day inauguration festivities will actually begin the day before, with an April 14 speech by Mikhail Gorbachev, former president of what was once the USSR.

A keynote address by Dr. Paul E. Gray, immediate past president of MIT, along with performances by the RIT Philharmonia, under the direction of Charles Warren; a poetry reading; an operatic aria; and dance will be part of the ceremony and festivities.

According to Joan Stone, Faculty Council chairperson and coordinator of the event, "More than 90 presidents and their delegates from colleges and universities will participate in a processional that will include some 600 faculty and staff. College and university representatives will march in order of the founding year of their institutions with Harvard University—founded in 1636—being first."

Rochester area colleges and such others as Amherst, Rutgers, Syracuse, Radcliffe, Northeastern, and Skidmore will be participating.

The inauguration, beginning at 1:45 p.m. in Ritter Ice Arena, will feature greetings from representatives of Student Government, Staff Council, administration, and Faculty Council. Colby Chandler, chairman of the Board of Trustees, will preside.

Sprinkled throughout the program will be artistic interludes. The RIT Dance Company will perform a piece choreographed by Michael Thomas, NTID Performing Arts faculty member. Festivities will also include a poetry reading by Dr. Robert Panara, professor emeritus, and

a vocal selection by Derek Smith, adjunct professor of music in the College of Liberal Arts.

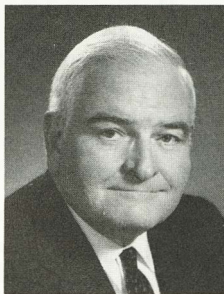
The NTID Polished Brass and the NTID Combo, both under the direction of Bob Mowers, music consultant in the NTID Performing Arts program, will perform, along with the RIT Jazz Ensemble.

In addition to the pageantry of the inauguration, RIT's history—in the form of photos, letters, and memorabilia—will be on display April 14–15 in Clark Gymnasium and the Student Alumni Union. A separate display on the RIT presidents will also be featured.

A reception in Clark Gymnasium will follow the inauguration ceremonies.

RIT's Outstanding Scholar Award recipients, their parents, and their teachers have been invited to the inauguration. The Outstanding Scholar Awards ceremony will be held at 5:30 p.m. in Ingle Auditorium.

Keynote speaker Gray served as president of MIT—the university at which Simone earned his Ph.D. in economics—for 10 years. He led MIT in an expansion of its relations with industry and development of major research and educational programs in microelectronics, health sciences and technology, communications, brain and cognitive sciences, and the management of technology.



Dr. Paul E. Gray

Gray began his career at MIT in 1957. He served on the faculty and in the administration, including the positions of associate provost, dean of engineering, and chancellor, before becoming the school's 14th president in 1980. In 1990, following his retirement from the position, he became chairman of MIT's Board of Trustees. In that same year, he was elected to the board of directors of Eastman Kodak Company.

From 1982 to 1986, Gray was on the White House Science Council as a member of its Panel on the Health of Universities. In addition to Kodak, he is also a board member of Kennedy Memorial Trust; Museum of Science, Boston; the National Action Council for Minorities in Engineering, Inc.; The New England, Shawmut National Corporation; Wheaton College; Woods Hole Oceanographic Institute; and The Boeing Company.

Chair, Banners To Make Debut

Two new traditions at RIT will be unveiled amidst the Renaissance-era pageantry of the presidential inauguration.

Faculty in the School for American Crafts constructed a ceremonial chair "fit for a university president for all times." The chair, crafted by Douglas Sigler and John Dodd, represents the high standards and strength required of the Institute's leader. Made of wood, bearing elements from all five SAC programs—textiles, metal/jewelry, wood, glass, and ceramics—the chair will herald all events and celebrations of import at RIT.

Also displayed for the first time will be college banners, designed by Toby Thompson, chairperson of the Industrial, Interior, and Packaging Design Department. The fabric banners were produced by Donald G. Bujnowski, chairperson of the School for American Crafts.

The stanchions bearing the banners were constructed by students in the School for American Crafts. Each banner was designed in concert with each college to represent its distinctive characteristics.

Gorbachev Tickets Sell Out Quickly

As students waited patiently by the hundreds to get tickets to see and hear former Soviet leader Mikhail Gorbachev on April 14, *News & Events* had to ask "Why are you here in line?"

"This is a milestone!" said April Goldstein, a senior in the School of Food, Hotel, and Travel Management. "One of the world leaders of our time—here at RIT," said Melissa Mortimer, a third-year marketing major.

A biotechnology major added, "We're skipping out of classes to get tickets. But one of my professors said we had to go—he requires it for the class."

Fourth-year economics student Rebecca Haeefe said, "[Gorbachev is]

one of the most influential leaders of the world. He led the breakdown of the Eastern Bloc. And he doesn't speak at colleges ordinarily. We're really lucky to have him here."

Woodworking and furniture design student Bill Cochrane said, "This guy has had a pretty intense effect on our lives. I'm really looking forward to hearing him."

Ayana Greene, a fourth-year professional and technical communication student and part-time RIT employee, thinks Gorbachev's visit will be "very exciting." While waiting to get tickets for office mates in NTID's School of Business Careers, she talked to local TV reporters.

College of Business faculty member Don Wilson put in his two cents: "This is history in the making—to see someone who's probably going to be mentioned in a lot of history books. I just couldn't miss this."

And Aaron Lutz, first-year computational math major, thinks Gorbachev "had a lot of good ideas, but didn't get a chance to put them to work," adding, "When else will I



Tickets for Mikhail Gorbachev's April 14 speech sold out in just over three hours March 25. Seventy percent of tickets were bought by students.

Inside: Distinguished Professorships Feature

In this issue, *News & Events* presents a complete list of RIT's Distinguished Professorships, their origins, current holders, and a synopsis of each Distinguished Professor's background and current activities.

Look for it on pages 3–6.

New Alma Mater to Debut During Inauguration Week

*"Hail, RIT! Together stand
Creating good with mind and hand
Inspired to learn 'til life is done
As teachers, learners, all are one!"*

—RIT's new Alma Mater

That's how the story begins. Not too long ago, Isaac Jordan, chair of the Commission for Promoting Pluralism, approached the Priorities and Objectives Committee and asked if anyone knew RIT's Alma Mater. After a moment of reflection, they decided that 99 percent of the RIT community had probably never heard the Alma Mater. It was not being sung at Institute ceremonies or athletic events, so what was it being used for? Nothing.

The Alma Mater, says Jordan, had become archaic and no longer represented the true goals of the Institute. He views the old song as a reflection of the way RIT was many years ago—one that didn't serve the

true purpose of an alma mater.

The "Institute song," says Jordan, should unite the entire RIT community and create a sense of pride amongst individuals. "When I sing the national anthem," he says, "I think, 'Boy! I'm one of the Americans!' The Alma Mater should do the same thing."

A committee, chaired by Diane Habeeb, was formed to solicit lyrics for the new Alma Mater—and the rest, as they say, is history.

The author of RIT's new anthem, an associate professor, will remain anonymous, but the song won't. You'll hear it echoing through the dining halls, resonating through the Student Alumni Union, and in the wind as you cross the Quarter Mile. It makes its official debut April 15, when it's scheduled to be sung by the entire RIT community at President Simone's inauguration.

Parking Advisory April 14–15

Because of special events on campus Wed. and Thurs., April 14–15, parking lot E and the east bay of lot D will be closed to all but persons with reserved parking in those areas. The visitor parking lot V will also be closed. Alternate parking will be available in lots G and H.

Students Welcome

All RIT students are invited to attend the inauguration of President Simone. A limited number of tickets is available; to request tickets, see your college dean.

Students Exhibit Glass Works

RIT Glass Program students show their best works of 1992-93 in a first-of-its-kind exhibit at Angel Fire Gallery in Rochester this spring. From conceptual, non-functional pieces to classic, Venetian-style goblets, the April 3-24 exhibit includes cast work, pate de verre, blown glass, slumped and fused glass, and cold fabrication.

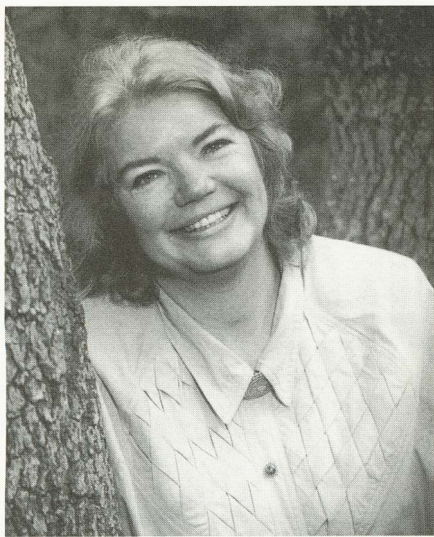
"Some of the work is very innovative, very personalized," says Michael Taylor, professor and head of the Glass Program in the School for American Crafts. The 15 students range from first-year to graduate level. The program's two studio residents will also exhibit.

Photographer Exhibits at SPAS

Uta Barth's images have been described as standing "independently, like scenes in a story; their subjects are sharply lit, putting you in mind of how the camera works; they are small dramas of concealment and illusion" (*Los Angeles Herald Examiner*, June 1989). The Modernist photographer visited the School of Photographic Arts and Sciences April 2 to lecture and open a show of her work in the SPAS Gallery on the third floor of the Gannett Building. The show runs through April 15.

Gallery hours are Mon.-Thurs., 10 a.m.-8 p.m.; Fri.-Sat., 10 a.m.-5 p.m. For more information on hours, call gallery coordinator Laura Brown at -5199.

Arts & Lectures Features Columnist



Molly Ivins

Molly Ivins, journalist and tart-tongued observer of the American scene, will be the fifth speaker in this season's Rochester Arts & Lectures Series Thurs., April 22. The series presenting distinguished writers is co-sponsored by RIT's College of Continuing Education and Judy Columbus Realtors.

Ivins, whose specialties are politics, language, Texas, and the press, contributes to newspaper, magazines, radio, and TV. She will speak at 7:30 p.m. at the Downtown United Presbyterian Church, 121 N. Fitzhugh St.

Tickets are \$15 and are available by calling the Arts & Lectures office at 244-3284; at Borders, Village Green, and Park Avenue bookstores; or at the door the night of the lecture.

Measures Improving Access for Deaf

A Deaf Access Group formed after 1991's Campaign for Accessibility Now (CAN), working with RIT, has made significant strides in improving access and communication for individuals who are deaf.

As explained by NTID college senator Anthony DiGiovanni, former president of NTID Student Congress and a member of the group, efforts have concentrated on the areas outlined below.

The eventual goal, emphasizes DiGiovanni, is to make RIT "the national model of mainstreaming." He gives much credit to President Simone, whom he says has set an example at the very top of the Institute by plunging immediately into sign language lessons and meeting monthly with student leaders to discuss their concerns.

- **Sign language and deaf culture offerings in the College of Liberal Arts:** A curriculum development committee is being formed by deans William Daniels of Liberal Arts and James DeCaro of NTID to develop a formal curriculum proposal for an American Sign Language and Deaf Culture concentration within the College of Liberal Arts. NTID student leaders will be included in its review and critique.

DiGiovanni said another goal is to develop a curriculum for a program for all hearing students to introduce them to RIT's deaf culture. The program would include courses for entering students at summer orientation.

- **Accessibility at offices of Registrar, Bursar, and Financial Aid:** Student Ombudsman Barry Culhane has been working with these offices' leaders, as well as with associate vice president Jack Clarcq, to identify ways to improve services to deaf students. Staff will continue sign language instruction, and Culhane plans to discuss with them the possibility of hiring deaf students.

DiGiovanni adds that the group would like to work with the Personnel Office to develop an orientation for all new hearing RIT employees to enable them to better interact with RIT's deaf community from the start. An Access Assessment Coordinating Group, headed by NTID's Dr. Jeffrey Porter, is working with Dave Nowak of Food Service, Helene Manglaris of Student Activities, and Doug May of Physical Education, Intramurals, and Recreation, to assess these departments' strengths and weaknesses in providing services to deaf students. A new curriculum in orientation would begin in those departments and, if successful, spread to others.

- **TTY accessibility:** A sub-group, under Dr. Alan Hurwitz, has worked with the Communications Department to ensure the current edition of the RIT phone directory accurately reflects TTY-accessible and non-accessible phone numbers. More TTY pay phones have been installed at several campus loca-

tions. The group would like to see more installations in areas of heavier use, and is working with executive vice president and provost Dr. Thomas Plough on all TTY issues.

DiGiovanni said the group wants to increase the number of TTYs available in offices. "The College of Business promotes Total Quality," he says, "but they only have a few TTYs. Communication is part of providing quality service to all of your customers." At the same time, DiGiovanni adds, the group will try to be fair in determining reasonable expectations and timelines.

- **Sign language training for Campus Safety officers:** Hurwitz and Campus Safety director Dick Sterling have headed these efforts. "I'm very impressed with the way they're making progress," says DiGiovanni. "Deaf students are very happy about it." The crisis interpreting system now has a shorter response time as a result of providing crisis interpreters on duty at the Radisson Inn. In addition, Residence Life has opened its Resident Safety Assistant and Apartment Safety Assistant positions to deaf students. Recently, NTID student Cathy Noble was appointed as Campus Safety's first deaf co-op student, and a new Campus Safety officer position was created to support the co-op position. "She is an outstanding role model in the deaf community," said DiGiovanni. "Campus Safety made great progress by including her on its team. This is a model that should be incorporated into other departments. The ripple effect will spread out from there."

Sterling has determined that a specific training proposal by Hurwitz, designed to establish minimum levels of sign language competency among Campus Safety officers according to category, is not currently feasible because of staffing shortages. However, Sterling will work with associate director Lee Struble and Gary Mowl of NTID to encourage officers to improve their sign language skills. Noble's presence on the staff is viewed as a positive incentive.

- **Planning for capital expenditures related to access:** Physical Plant facilities engineer Marty Becker, who is responsible for implementation of Americans with Disabilities Act (ADA) regulations as they affect RIT, will be involved with the group in the future, and will assist Plough in planning for capital expenditures related

to access for consideration by RIT's budget committee.

The Deaf Access Group views all the above efforts as part of RIT's long-range strategic planning process, especially those involving curricula development and considerable financial outlay. An issue yet to be addressed in detail is the issue of staffing and coverage of interpreting needs for deaf students throughout campus. For example, says DiGiovanni, student organization meetings are ranked lower on the interpreting priority scale than classroom lectures including deaf students. He would like to see both campus life and classroom needs weighed equally, and more funds appropriated for hiring of interpreters. "People who are deaf make up more than 10 percent of the RIT community. It's critical for RIT to put an emphasis on this. [Interpreters aren't] here for the deaf—they're here for both of us [deaf and hearing]." With that in mind, DiGiovanni has organized an annual Interpreter Appreciation Day to thank interpreters for their work. This year's event was held March 30.

"I've noticed a quite impressive, rapid work in the RIT administration's trying to meet our needs," said Ricky Postl, a first-year social work major involved in the accessibility movement on campus. "Do we have every access that hearing students here do? The answer is 'no.' . . . Not until the expression 'We have what they have' is possible will I say CAN was a success." He agreed with DiGiovanni about the interpreter shortage and long lines for deaf students at offices with service windows. However, he acknowledged the progress made by Campus Safety and made suggestions for future deaf culture courses that would hold the attention not only of hearing students new to the field, but deaf students already familiar with the basics. "[They] would be interested in current events we face and a little bit of history backing it—not [just] meeting famous or so-called famous deaf people coming to give a speech."

DiGiovanni has a dream that someday his nephew, who is five years old and deaf, will be able to attend RIT on a campus where he is able to communicate easily with anyone—students, faculty, staff—in sign, and have easy access to any program or service. Because of the work of the Deaf Access Group, and the cooperation of many facets of RIT in implementing its goals, he is closer to seeing that day come.

Student Employment Celebrated

With the increasing cost of higher education today, it's no wonder more and more students are seeking part-time employment to supplement their tuition costs. Now more than ever, students are working

directly on campus. With more than 4,000 working within the RIT community, it's safe to say that Student Employment Week '93, April 3-9, is the largest ever.

Some of the largest employers of students on campus, according to Student Employment Office (SEO) administrator Joanne Stuewe, are Campus Safety, Food Service, and Information Systems and Computing (ISC) User Services. So what do these students do?

Thom Craver, a first-year computer science major, works for both ISC and the Academic Computing and Users Services office for the same reason most students work—money. But "I enjoy helping people and sharing the knowledge I have gained with them," he says—which is probably why he's stayed for the past three quarters. He assists people in computer labs across campus.

In honor of Student Employment Week, SEO is encouraging employers to commend their student employees for a job well done in the past year. SEO, located in the tunnels of the Student Alumni Union, offers students various employment services. A job board is posted down the hall from the office, listing both on- and off-campus employment opportunities. SEO also provides a computerized version of the job board via the VTX system, accessible through VAX accounts. For more information, call -2631 or stop by the office.



GOOD SPORTS . . . Two RIT players were honored at the 44th annual Rochester Press-Radio Club dinner at the Holiday Inn Genesee Plaza. Shown (left to right) are Alberto Montanez, Jason Rich, Mark Clayton, and Cathy Turner. Montanez was cited as ECAC/Holiday Inn Upstate Basketball Player of the Week three times. Rich, a soccer standout, was named TV-10 Local College Athlete of the Year. Clayton, a wide receiver with the Miami Dolphins, was a head table guest at the dinner. Turner, a short-track speedskating Olympic champion, was named Rochester Coca-Cola Sports Personality of the Year.

Distinguished Professorships: 'An Environment In Which Master Teachers Can Flourish'

RIT's distinguished professorships reflect the preeminent value associated with gifted teachers who can inspire student interest and creative pursuit in a particular work specialty," says President Simone.

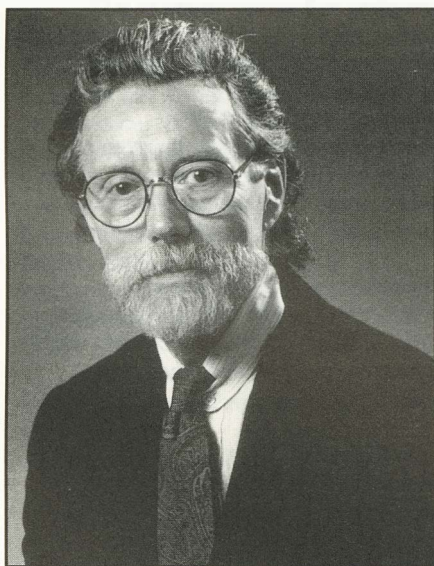
"Distinguished professorships throughout the academic world create an environment in which master teachers can flourish."

According to executive vice president and provost Thomas R. Plough, "RIT is fortunate to be able to offer 19 uniquely funded professorships because:

- They serve to recognize outstanding teachers through the highest honor that can be conferred by an institution on a member of its faculty.
- They aid in attracting and retaining first-rank faculty talent, advancing teaching quality throughout RIT's eight colleges.
- They serve as a special platform from which these outstanding teachers can advance the best practices in their respective fields.
- They are expressions of farsighted and generous benefactors who may wish to perpetuate an interest in a field of study that played an important role in the fulfillment of their own lives."

Artist-in-Residence Professorship School for American Crafts/College of Imaging Arts and Sciences

Wendell Castle



Professional Background:

Became artist-in-residence at RIT 1984. RIT acquired Castle's woodworking school, integrating it into the Woodworking and Furniture Design Department, School for American Crafts, 1989. Castle continues to work with apprentice woodworkers and participates in conferences and lectures at RIT.

Highlights:

Renowned woodworker and sculptor has brought furniture to an art form that aesthetically satisfies, sometimes provokes, for more than 30 years. Famous creations include a dining room table replete with coat carved atop the surface, giant clock for Toronto, celebrated 500,000th Steinway piano, and Greater Rochester International Airport clock. Called "art that works," his pieces are in numerous permanent and corporate collections, including the Metropolitan Museum of Art; the American Craft

Museum; the Renwick Gallery; American Express Corporation; and private collections of the late Malcolm Forbes, Mr. and Mrs. Harvey Kaplan, and Edward Moulthrop. Has recently exhibited at the American Craft Museum; Peter Joseph Gallery; Franklin Parrasch Gallery; Birmingham Museum of Art; Los Angeles County Museum; Dayton Art Institute; Grassi Museum in Leipzig, Germany; Crafts Council Gallery of Dublin; Oslo Museum of Applied Art in Norway; and Renwick Gallery, National Museum of American Art, Smithsonian Institution. Work has been discussed and expertise tapped in dozens of books and periodicals over the years. Serves as guest lecturer on topics such as "Celebrating the Decorative Arts: A Symposium in Two Parts" at Lowe Art Museum, University of Miami. Retrospective of his work toured America 1989-91.

Melbert B. Cary Jr. Professorship in Graphic Arts School of Printing Management and Sciences/College of Imaging Arts and Sciences

Frank J. Romano



Professorship:

Established 1969 (endowed 1982) by Mary Flagler Cary Charitable Trust to provide permanent memorial to Cary, former president of American Institute of Graphic Arts, and perpetuate his interest in field

Focus:

RIT's newest distinguished professor (January 1993) exploring possibility of teaching experimental course in electronic publishing; also conducting research in short-run color printing on electronic printing devices other than presses

Professional Background:

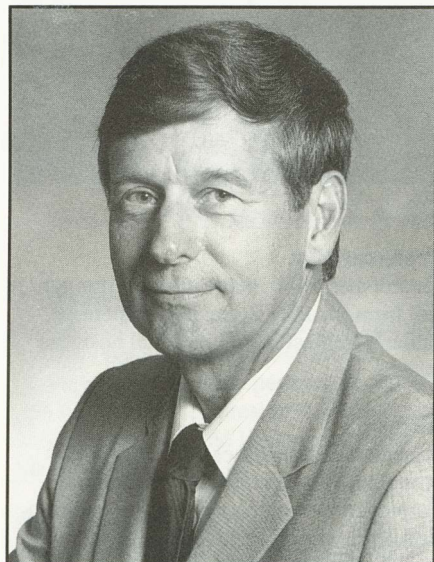
Editor of *TypeWorld/Electronic Publishing* magazine; expert in typesetting, printing, and graphics; more than 20 years' experience in graphic arts

Highlights:

Editor of *Color Printing* and *Computer Artist* magazines and author of seven books; prepress section of International Paper *Pocket Pal*; and thousands of articles. Past chairman of National Composition and Prepress Association; served on boards of Association of Graphic Arts Consultants, International Typographic Composition Association, and International Association of Printing House Craftsmen's Boston Chapter. Founder and volunteer director of QuarkXPress Users International. Performed consulting work for more than 75 major corporations, publishers, newspapers, and other organizations, including RJR Nabisco, Aetna Insurance, Doubleday Book Club, and General Electric; has worked on more than 840 projects involving analysis, selection, application, installation, and operation of typesetting and electronic publishing systems.

Roger K. Fawcett Distinguished Professorship in Publications Color Management School of Printing Management and Sciences/College of Imaging Arts and Sciences

Miles Southworth



Professorship:

Established 1991 through a donation from World Color Press, Fawcett family, and industry colleagues. Only one of its kind in nation; established to address color quality and productivity in magazine, newspaper, and book publishing industries, as well as promotion of RIT color research activities

Focus:

Address color quality and productivity in publications industry and promote RIT color research activities. In addition to teaching, Southworth organizes, teaches selected RIT industry seminars and short courses; guest lectures in other RIT courses

Professional Background:

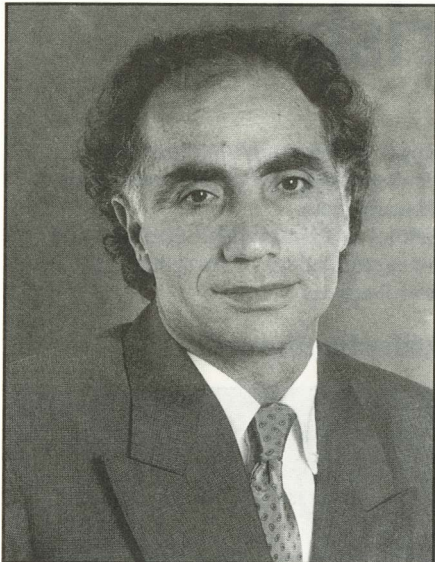
Joined School of Printing faculty 1961; moved through ranks to become director 1985-91

Highlights:

Instrumental in creating new Integrated Electronic Prepress Laboratory, a Macintosh-based prepress facility allowing students in every area of graphic arts to explore desktop publishing (used by School of Printing, College of Continuing Education Technical and Education Center, Center for Integrated Manufacturing Studies); consultant in printers' color reproduction problems, quality control in graphic arts, training color separation operators and supervisors. Member of Gravure Technical Association Densitometer Committee and Association of Graphic Arts Consultants; former member of Technical Association of the Graphic Arts Color Committee; past president of Technical Association of the Graphic Arts. With wife, Donna, author of numerous books on color technology; publishes *The Quality Control Scanner*, monthly newsletter about quality control and color reproduction.

Benjamin Forman Professorship in International Business
College of Business

Dr. Riad Ajami



Professorship:

Established 1986; made possible through gift from Maurice Forman to perpetuate father's interest in international business issues

Focus:

Research encompasses interests such as strategic alliances and entry strategies employed by small, medium, and multinational firms conducting business abroad; comparative economics between the U.S. and Japan, Germany, and Europe; U.S. oil security and technology transfer. Strives to bring students better understanding of what he calls literacy of international business, a must in today's global marketplace

Professional Background:

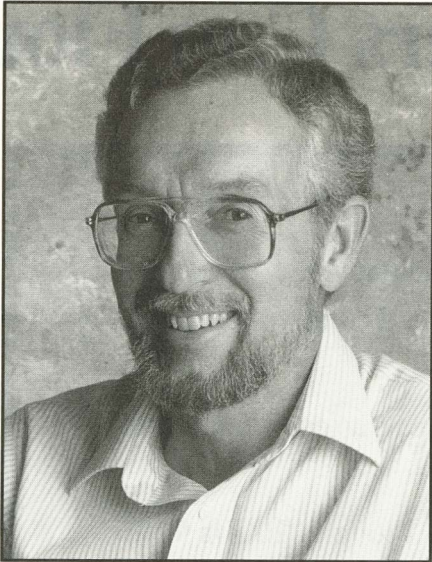
Leading scholar in international business, strategic management, and oil economics; director of Center for International Business and Economic Growth at RIT. Named to professorship fall 1991; this year, will be among group of RIT professors traveling to Czech Republic to teach at U.S. Business School in Prague

Highlights:

Associate editor of *Journal of Multinational Financial Management*, *International Journal of Commerce and Management*, and *Journal of Global Marketing*; author of several books, including *International Business: Theory and Practice* and *International Debts and Lending*. Has written on role of regional banks in international debt crisis, international business in Middle East, and North American Free Trade Agreement; appeared on national television and radio programs, including "Nightline," "The MacNeil-Lehrer News Hour," NBC News, CNN, and National Public Radio.

Caroline Werner Gannett Professorship in Humanities
College of Liberal Arts

Dr. Paul Grebinger



Professorship:

Created 1974 to perpetuate Mrs. Frank E. Gannett's lifelong interest in education, especially in fields with humanistic perspective

Focus:

Professorship has evolved into unique lectureship and series of year-long programs; mission remains offering students opportunity to hear new voices and ideas unchanged. Grebinger has coordinated Gannett Lecture Series and its link to College of Liberal Arts' Senior Seminar. Series—featuring local and national speakers discussing topics of difference and the community—part of required curriculum in liberal arts; this year, topics included gender, race, and class

Professional Background:

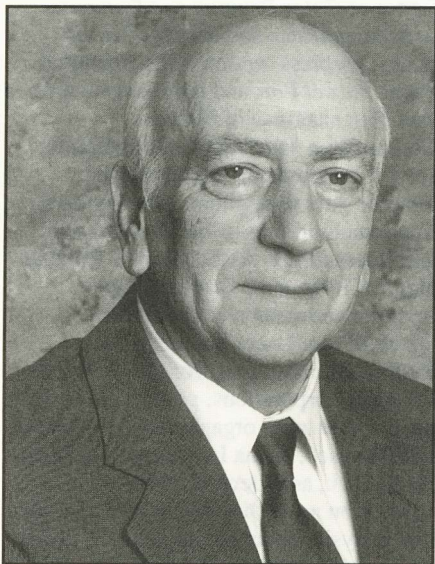
Became a member of Eisenhower College faculty 1973; came to RIT 1982 when college merged with RIT

Highlights:

Has conducted research on Colombia and written about local history topics such as Elizabeth Cady Stanton, founder of women's rights revolution. Has written on Rochester button industry and helped create continuing exhibit at Rochester Museum and Science Center. Currently working on Geneva Historical Society exhibit about history of nursery industry in Geneva, to run from May to November.

James E. Gleason Professorship in Mechanical Engineering
College of Engineering

Dr. Richard B. Hetnarski, P.E.



Professorship:

Established 1967, funded by estate of James E. Gleason, RIT trustee 1930–1964, to provide permanent memorial and strengthen RIT in field of Gleason's education

Focus:

Internationally known expert in thermal stress analysis named Gleason Professor in summer 1992. Serves as senior professor in department and takes leadership role in research, teaching, and consulting activities relating to mechanical engineering and design

Professional Background:

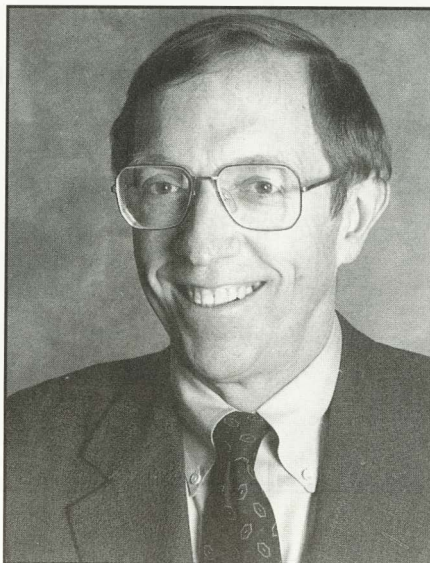
Has been member of Mechanical Engineering Department for 22 years

Highlights:

Conducting research on three-year joint project with Dr. Jozef Ignaczak, Institute of Fundamental Technological Research, Polish Academy of Sciences, Warsaw. "Non-Classical Problems of Thermal Elasticity" funded jointly by National Science Foundation and Polish Academy of Sciences.

Arthur J. Gosnell Professorship in Economics
College of Liberal Arts

Dr. Thomas D. Hopkins



Professorship:

Created 1985 by friends and family of Arthur J. Gosnell to perpetuate memory of Mr. Gosnell through recognition of importance of good teaching in economics and to facilitate research into public policy questions

Focus:

Noted economist, who has gained wide recognition for his work on regulatory reform, had initial three-year appointment renewed for another five years 1991

Professional Background:

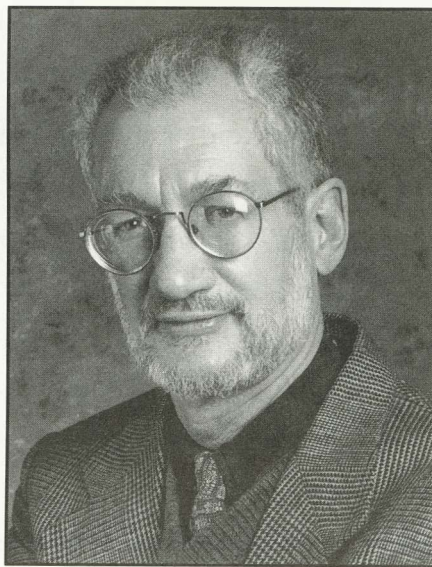
Before coming to RIT, was deputy administrator of Office of Management and Budget's Office of Information and Regulatory Affairs and White House appointee to Council on Wage and Price Stability. In fall 1992, was among six RIT professors who traveled to Czech Republic to teach in RIT-sponsored U.S. Business School in Prague. Its MBA program, run by College of Business, is one of first of its kind offered in emerging market economies of former East Bloc countries

Highlights:

Has written extensively on benefit-cost analysis and regulatory policy. Following *Exxon Valdez* oil spill in 1989, was chosen by National Research Council to study tank vessel design leading to mandates for double-hulled tankers. Other research includes value of human life, user fees, and, most recently, regulatory policy in U.S. and Canada. Study on growing costs of federal regulation received national attention and was subject of 1992 RIT conference. Testified before Washington and Ottawa lawmakers on regulatory reform and has work featured in 1993 U.S. Federal Budget, as well as host of national and international publications. Will continue international lecture circuit in June with trip to Poland to speak about Czech Republic's economic experiment.

Ezra A. Hale Professorship in Applied Ethics
College of Liberal Arts

Dr. Wade Robison



Professorship:

Created 1989 through gift from William B. and Patricia F. Hale and Lawyers' Cooperative Publishing Company to establish permanent memorial to Hale, longtime and valued friend of RIT, former president of Lawyers' Co-op, and member of RIT's Board of Trustees

Focus:

Encouraging students to be more reflective about own morals and values and to think critically about values involved in public policy decisions

Professional Background:

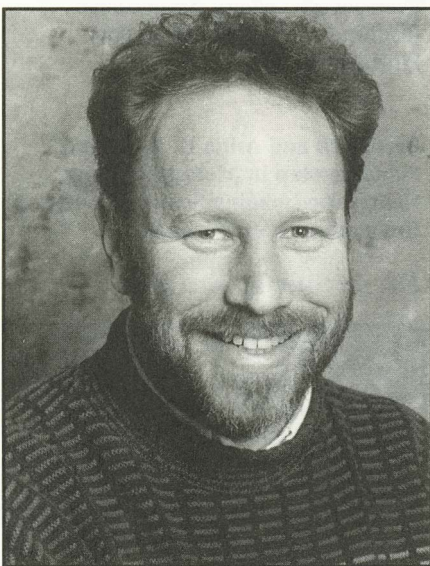
Came to RIT 1990 to begin three-year term. Teaches philosophy courses while planning seminars and other special events

Highlights:

Has extensively researched and written on David Hume, 18th-century British historian and philosopher, and examined questions of reason and moral value in fields including waste management, business, law, social policy, medicine. In 1992, conducted two-day conference on social work ethics examining roles of social workers. Edited books *Medical Responsibility: Autonomy, Informed Consent, and Euthanasia* and *Profits and Professions: Essays in Business and Professional Ethics*. Under way are several books, including one on waste management and another on social work ethics.

Richard S. Hunter Professorship in Color Science, Appearance, and Technology
Center for Imaging Science/College of Imaging Arts and Sciences

Dr. Roy S. Berns



Professorship:

Established 1983 by Mr. and Mrs. Hunter to enable RIT to increase research and educational efforts in color science, technology, and appearance science to benefit industry and science of color

Focus:

Has held professorship since 1987. A leading researcher in colorimetry, visual psychophysics, and color imaging; serves as director of Munsell Color Science Laboratory. Leads all color-related activities at RIT and initiates research specifically in device-independent color imaging and generally in applied colorimetry

Professional Background:

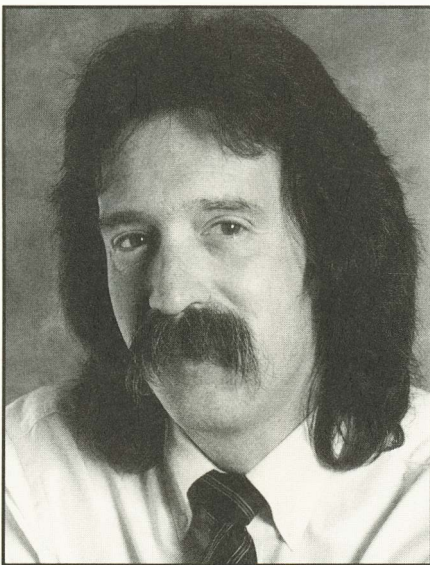
Came to RIT 1984 as assistant professor in imaging science. In 1986, took over as interim director of Munsell Laboratory following death of Dr. Franc Grum; held position until appointment to Hunter Professorship

Highlights:

Serves on editorial board of *Color Research and Application*; served on Inter-Society Color Council for Optical Radiation Measurements board of directors. Member of American Society for Testing and Materials and International Commission on Illumination. Won Inter-Society Color Council Macbeth Award, given biannually for significant contributions to color, 1990.

William A. Kern Professorship in Communication
College of Liberal Arts

Dr. Bruce A. Austin



Professorship:

Established 1971 by Rochester Telephone Corporation to commemorate its 100th anniversary and provide memorial to its

former president and member of RIT's Board of Trustees 1959–1964. Promote a broad program of research in communications arts and sciences

Focus:

Appointed 1987. Goal has been to broaden college's contact with people in business, industry, and non-profit organizations. Has organized Fast Rewind conferences held over past five years, featuring experts in film and video preservation and history, drawing wide interest from academics and industry observers alike, including museums and archivists

Professional Background:

Mass media scholar first came to RIT 1976 as instructor; helped launch college's Professional and Technical Communication Department

Highlights:

Author of dozens of papers on motion pictures and television, including works on cinema screen advertising, loneliness, attributes of movie-going public, and development and decline of drive-in movie theaters. Author of *Immediate Seating: A Look at Movie Audiences*; edits annual *Current Research in Film: Audiences, Economics, and Law*. Organized successful 1992 exhibit, "The American Arts and Crafts Movement in Western New York, 1900–1920," featuring more than 140 artifacts, including 35 pieces of Walrath pottery on display for first time.

Russell C. McCarthy Professorship in Industrial Technology
College of Applied Science and Technology

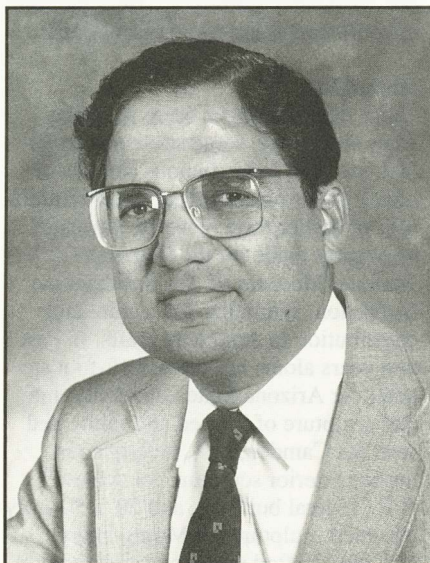
Currently vacant

The opening of RIT's School of Applied Industrial Studies in 1979 was the impetus for the establishment of the Russell C. McCarthy Professorship in Industrial Technology. Friends of McCarthy, including then-honorary RIT trustees Fred Gordon and Lucius Gordon, manager of Rochester's Industrial Management Council for 20 years, endowed the fund in his honor.

McCarthy, elected to RIT's Board of Trustees in 1947, is currently an emeritus board member.

Eastman Kodak Professorship of Industrial and Manufacturing Engineering

Dr. Balwant Karlekar



Professorship:

Created 1990, before Center for Integrated Manufacturing Studies (CIMS) project got under way; was part of initiative to support CIMS

Focus:

As director of CIMS, responsible for working with small- to medium-sized manufacturing companies and helping them become world-class suppliers by bringing together interdisciplinary teams

of faculty and industry experts to work on issues such as reduction of product cycle time, Total Quality Management, and implementation of CAD and EDI

Professional Background:

At RIT since 1966, starting as assistant professor in Department of Mechanical Engineering. Named department head 1980; spearheaded effort to create CIMS. Has 30 years' experience in industry, teaching, consulting, and academic administration

Highlights:

Put together several training and educational programs ranging from development of CAD systems to vibrational analysis and turbo machines; has strong skills in interpersonal relations and bringing together teams of experts to work effectively on a project. CIMS provides creative solutions by leveraging best resources from government, industry, and academia to assist manufacturers in reducing cost and risk of implementing technology. Partner companies receive assistance in needs assessment, applied assistance, and skills training. CIMS also assists in aspects of business and technical issues to help companies survive and grow in competitive marketplace.

J. Warren McClure Research Professorship in Marketing
College of Business

Dr. Eugene H. Fram



Professorship:

Created 1977 by Mr. and Mrs. J. Warren McClure to perpetuate Mr. McClure's professional interest in marketing. McClure, elected to RIT's Board of Trustees in 1973, is now emeritus board member

Focus:

Named to professorship 1989. Has conducted wide range of studies on marketing issues and nonprofit boards of directors. Focus centers on shrinking amount of time consumers have to shop and ways of making nonprofit boards more efficient and effective

Professional Background:

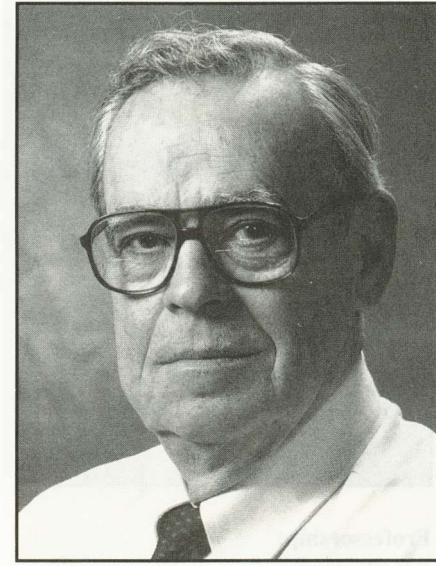
In 36th year at RIT. Began as marketing instructor in 1957, later becoming full professor, director of Center for Management Studies, and chair of Marketing Department. Has also been chair of International Business Program Development Committee and member of RIT's Strategic Planning Committee

Highlights:

Has written extensively on variety of business topics, including use of projective techniques in marketing research, negative appeals in promotion, time guarantees, and partial benefit marketing. Has written five books and about 75 articles; work has appeared in such prestigious journals as *Harvard Business Review*, *Marketing Research*, *The Journal of Promotion Management*, *American Demographics*, and *Sales and Marketing Management*. Quoted frequently in local and regional media as key expert on marketing trends.

James E. McGhee Professorship in Photographic Management
School of Photographic Arts & Sciences/College of Imaging Arts and Sciences

James E. Rice



Professorship:

Established 1967 by friends of McGhee and Master Photo Dealers and Finishers Association to provide permanent memorial for former vice president of Eastman Kodak Company and lifelong friend of photofinishing industry

Professional Background:

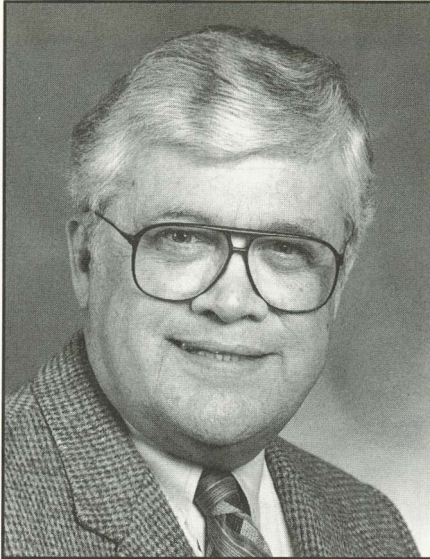
Educator and proponent of healthy technology—environmentally friendly film processing. Brings 30-year Kodak background to chair of Photo Systems Management Department and professorship. NASA lists among professional contacts and consultation clients, both recently and during *Challenger* crisis

Highlights:

Avid champion of chemical recycling and 100 percent waste treatment in lab processing; works with industry to achieve "zero effluent" in small- to medium-sized labs. Recent success: CPAC, Inc. donated silver recovery system to RIT's photo development lab this fall, adding to primary electrolytic silver recovery system given 10 years ago. More new technology secured: Accudata Printer and Central System, donated this fall by Bremson, Kodak, and H&H Color Labs, adds latest in computer management and control for professional color labs. Recruiting students from New York State community colleges; aims to fill special 2+2 option, developed last year, for transfers into BS degree program. Strong student advocate consistently seeks out new scholarships for photography students, including Carter Harmon Scholarship Fund and Jack Renfro Scholarship Fund, established last spring by families, friends, and Professional School Photographers of America specifically for RIT's Photo Systems Management students.

Paul A. Miller Professorship in Continuing Education
College of Continuing Education

Dr. Ronald Hilton



Professorship:

Recognizes RIT faculty making distinguished contributions to continuing education with record of matching Institute intellectual and educational resources with needs of students and the community. Established 1981 by Board of Trustees in honor of former RIT president Paul A. Miller, 1969-1978

Focus:

Coordinating series of "conversation" sessions in adult education; teaching class in adult learning and development in CCE's Career and Human Resource Development graduate program; teaching developmentally disabled adults as part of Enrichment '92 summer program (will do so again for Enrichment '93); continuing work on study on adult learning in Scotland

Professional Background:

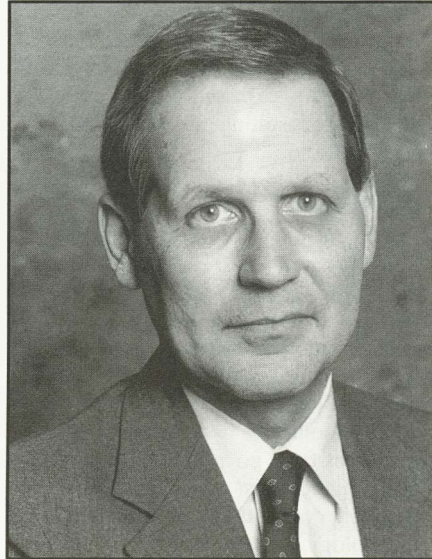
Chair of humanities in CCE; has served for 28 years at RIT. Has to credit a long list of publications and presentations in continuing education, including co-authorship of book *Landmarks in International Adult Education: A Comparative Analysis* with Alexander Charters of Syracuse, 1989

Highlights:

Professorship is particularly important to Hilton because of his longstanding respect for Miller. Son Paul, born 1972, named in his honor because "I was so impressed with his vision and commitment to continuing education. There's not a person in higher education whom I've admired more."

Paul and Louise Miller Professorship in Newspaper Operations Management
School of Printing Management and Sciences/College of Imaging Arts and Sciences

John M. Jakopin



Professorship:

Created 1977 by grant from Frank E. Gannett Newspaper Foundation to honor former chair of Gannett board and long-time member of RIT's Board of Trustees and perpetuate his interest in good management practices in newspaper industry

Focus:

Named to professorship 1992; is academic leader and coordinator of newspaper operations management undergraduate program and helps recruit qualified students. Also helps in fund raising and equipment donation and acts as newspaper industry-school liaison. Coordinates annual Isaiah Thomas Award, given to newspaper industry leaders in recognition of outstanding contributions to industry

Professional Background:

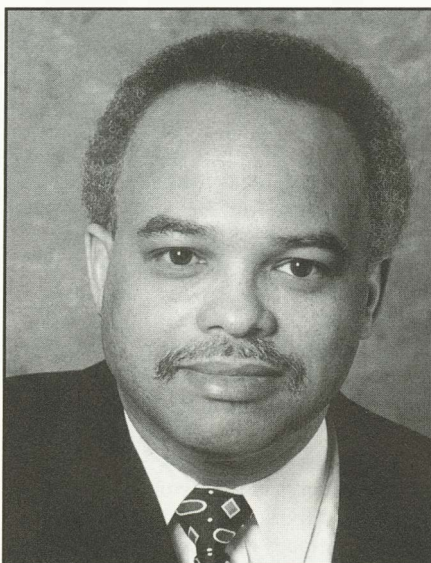
Has worked in newspaper industry since 1959 as craftsman, middle manager, consultant, senior manager. Most recent position was director of strategic projects at *Chicago Tribune*

Highlights:

Consulted for newspapers in British Columbia, New Brunswick, Oregon, New York, Pennsylvania, Colorado. As senior manager, had experience in strategic planning, operations management, and labor relations.

Frederick H. Minett Professorship in Continuing Education
College of Continuing Education

Matthew Augustine



Professorship:

Established 1978; brings distinguished Rochester area professionals to share professional knowledge and experience with RIT students and faculty

Focus:

Co-taught New Business Ventures class with CCE adjunct instructor Seldon Rockowitz Fall Quarter. Taught entrepreneurship course for College of Business in which he brought in community entrepreneurs. Spring Quarter devoted to work with Isaac Jordan and Commission for Promoting Pluralism

Professional Background:

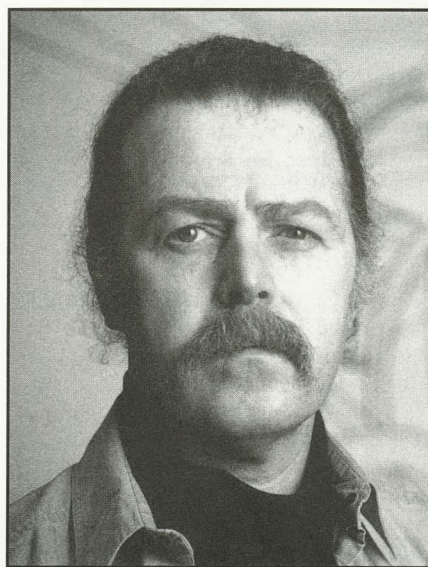
President and chief executive officer of Eltrex Industries, Inc. since 1976. Added professorship duties to nearly 80 hours a week he puts in at his company. "It's been very rewarding."

Highlights:

Received Small Business Person of the Year award 1985. Involved with several educational, business, and community service organizations.

Charlotte Fredericks Mowris Professorship in Contemporary Crafts
School for American Crafts/College of Imaging Arts and Sciences

Albert Paley



Professorship:

Established 1973 (endowed 1988) to perpetuate interest in School for American Crafts through work of faculty and students as talented craftsmen. Mowris was 1919 home economics graduate of RIT's predecessor, Mechanics Institute

Professional Background:

Metal sculptor and artist-in-residence since 1984; has earned worldwide reputé as artist and public art advocate. Welcomes friends of the art world, metal sculpture students, and young artisans to his studio, apprenticing them when possible. Visits RIT studios, advises, and joins in conferences and panel discussions

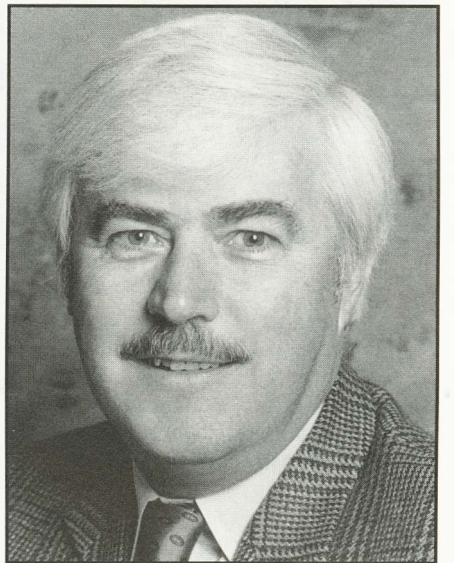
Highlights:

Great steel sculptures seem to spring from his artistry, some stretching to 30 feet, swathed in his famous ribbons of metal. Other pieces reveal detail reminiscent of earlier forte, jewelry. Intricate steel gates made for the Renwick Gallery, National Museum of Art, Smithsonian Institution, symbolize his stature and contribution to American crafts. In past two years alone, has crafted 12-foot steel gates for Arizona State University; interior sculpture of formed and fabricated steel for Camden, N.J., federal courthouse; exterior sculpture for Asheville, N.C., federal building; and 20' x 30' polychromed sculpture for Montgomery Co., Md. Has drafted numerous architectural designs for cities and agencies across U.S., from a sculpture/fountain in San Diego to sculpture/clock of aluminum and gold leaf for Orlando's Airport Authority. Venue highlights since 1991 for invitational exhibits and presentations include Museum of Fine Arts in Boston; Memorial Gallery of University of Rochester; Albany Institute of History & Art; Gallery at Bristol-Myers Squibb at

Princeton; Royal College of Arts, London; Second World Congress of Smiths, Aachen, Germany; Tokyo Art Exhibit; Glasgow School of Art, Scotland; World Crafts Council, Barcelona, Spain; and nationwide lecture tour in Australia. Recently held one-man shows in Duxbury Art Complex, San Antonio Art Institute, Peter Joseph Gallery, Smithsonian Institute, and Snyderman Gallery, Philadelphia.

Frederick and Anna B. Wiedman Professorship in Medical Imaging
Center for Imaging Science/College of Imaging Arts and Sciences

Dr. Arthur E. Burgess



Professorship:

Established 1985 by Rochester attorney Frederick Wiedman Jr. in memory of parents, Frederick and Anna B. Wiedman, to promote excellence in teaching and research in imaging science. Wiedmans were longtime friends of RIT

Focus:

Named to professorship 1991. Teaches courses in medical imaging and supervises graduate research students in medical imaging laboratory; also performs research on medical imaging and has written about 55 publications relating to field

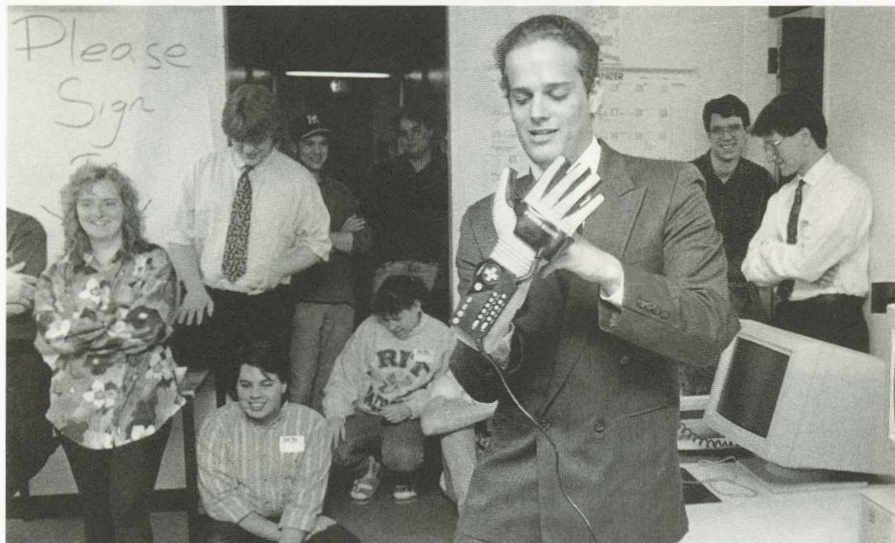
Professional Background:

Came to RIT from University of British Columbia in Vancouver, where he had served on faculty of medicine in the department of radiology since 1973

Highlights:

Is a member of number of professional organizations, including Society of Photo-Optical Instrumentation Engineers, Association of Researchers in Vision and Ophthalmology, Canadian Organization of Medical Physicists, and Optical Society of America. Has also performed consulting work for number of firms, including British Columbia Children's Hospital, MacMillan Bloedel Research, and Lunar Radiation Inc.

Computer Science House Thanks Donors



Eric Van Hensbergen demonstrates a power glove, one of the virtual reality projects he's been involved with as a resident and member of Computer Science House, which hosted a Donator Appreciation Day last month.

Computer Science House recently thanked its donors and showed them how their donations are being put to good use.

On Donator Appreciation Day, March 11, donors were formally thanked in a ceremony with President Simone. Donors also heard a presentation on future directions for CSH and were given tours and demonstrations of house projects.

Among recent donations:

- **Digital Equipment Corporation**—a VAX 8550 computer system. "We made an investment at RIT to strengthen the partnership between the academic and business world," says Kathy Landers, DEC marketing representative.
- **Sun Corporation**—three workstations, one of which is being used as an essential part of RITCISS—RIT's computerized information system, being developed by CSH students
- **Information Systems and Computing**—memory boards to be used on the DEC VAX 8550.

"The support we receive from industry and RIT is essential to Computer Science House to improve the computer systems and services it provides its members and other students," says David Filiatrault, CSH member and coordinator of Donator Appreciation Day.

Solar Car Ready For Sunrayce

The Spirit solar car is ready to roll on the open highway and take on its challengers as it travels to the Indy 500 Speedway in Indianapolis for the Sunrayce '93 Qualifiers April 10-11. Its position in the Sunrayce will be determined by how well it performs at the Qualifiers.

Sunrayce '93 is a 1,000-mile solar car race sponsored by the U.S. Department of Energy. The race will be run June 20-26 on a course from Dallas to the Minnesota Twin Cities area. The route will include Oklahoma City, Tulsa, Kansas City, and Des Moines.

RIT was one of 36 teams selected to participate in Sunrayce '93. Other schools participating include California State Polytechnic University, Florida Institute of Technology, George Washington University, and Stanford University.

Support Group To Meet Again

After a successful first meeting in March, the next meeting of the lesbian and gay RIT faculty and staff network will be held Sun., April 18. For details about the meeting, which will be accessible to both deaf and hearing participants, call Laurie Brewer, -6287 (V/TDD); Eric Bellmann, -4977 (V); or Andrew Boone, -6683 (V).

Bursar Opens Saturdays

In order to enhance student service, the Bursar's Office is now open Saturday mornings, from 9 a.m.-1 p.m., and will remain so for the remainder of Spring Quarter. According to bursar Richard Schonblom, the Cashier's Office is offering the full range of cashiering services normally provided on weekdays. He added that there will be no Saturday hours during Summer Quarter, but they will resume in the fall. "We hope that our students find these new hours to be a substantive addition to the services provided by the Bursar's Office," he said.

Fall Quarter Phone Registration

Call -6717.

Dates	Year Level
April 12-July 30	6
April 13-July 30	4, 5
April 16-July 30	3
April 23-July 30	2
April 30-July 30	1

There will be no registration May 29-31 or July 3-5.

NTID Conference to Explore Cultural Identity Perspectives

To more fully explore issues regarding deaf women and deaf ethnic minority groups within the general context of identity issues, the Division of Communication Programs at NTID has planned a one-day conference, "Deaf Identity: Diverse Perspectives," from 8:30 a.m.-5 p.m., Fri.,

April 23, in the Panara Theatre. The event is free and open to the public.

Dr. Ila Parasnis, associate professor in NTID's Department of Communication Research, says the goal of the conference is to increase understanding of the deaf community and to find ways to create environments that validate and support deaf people in discovering their own identities.

Prominent experts in deaf education will participate, including keynote presenters Joseph E. Fischgrund, headmaster at the Pennsylvania School for the Deaf; Dr. Kathy Jankowski, assistant professor in communication arts at Gallaudet University, Washington, D.C.; and Dr. Linda Risser Lytle, a licensed psychologist in private practice in Washington, D.C. Each keynote presentation will be followed by a brief discussion. In addition, NTID faculty will present various topics. All presentations will concern deaf identity as it relates to gender identity and/or cultural identity.

Presentations will be in both American Sign Language and English and accessible to deaf and hearing audience members. For more information, contact Parasnis at -6708 (V/TTY).

Holocaust Reflection To Include Lecture, Memorial Service

The RIT community will reflect on the tragedies of World War II's Holocaust with renowned author Dr. Deborah E. Lipstadt in a memorial gathering at 7:30 p.m., April 21, in the Allen Chapel, Interfaith Center.

The free event, interpreted for the hearing impaired and accessible to the physically challenged, will complete a day of activities—sponsored by Campus Ministries—devoted to remembering lives lost and damaged by the Holocaust. It will begin with a noon memorial service that will include a "shared reflection" by Rochester resident Helen Levinson, a Holocaust survivor.

Lipstadt, who has lectured internationally on issues of concern to the Jewish community, is a historical consultant to the United States Holocaust Memorial Museum, at which she develops the museum's interactive learning program on America's response to the Holocaust. She also directs a research project on the impact of the American experience on the values of ethnic and religious groups in Los Angeles. She is a professor of religion and Jewish studies at Occidental College and director of research of the Skirball Institute on American Values.

Lipstadt's latest book, *Denying the Holocaust: The Growing Assault on Truth*, addresses the revisionists who deny the Holocaust took place. Her previous book, *Beyond Belief: The American Press and the Coming of the Holocaust*, examines how the American press covered the Jewish genocide between 1933 and 1945—"what did people know, and when did they know it?"

Lipstadt will autograph copies of *Beyond Belief* following her talk.

Gorbachev . . .

Continued from page 1

have such an opportunity to hear him—a man whose name is known as well as the U.S. president's?"

The Iron Curtain came crumbling down in Gorbachev's time, ushering in tremendous political upheaval that eventually resulted in the breakup of the Union of Soviet Socialist Republics. Gorbachev, winner of the Nobel Peace Prize in 1990 and named *Time*'s 1987 Man of the Year, is beginning his first U.S. tour in Virginia with the Thomas Jefferson 150-year celebration at Monticello. RIT—his only stop in the Northeast—awaits his comments, and answers to audience questions, at 1 p.m., April 14, in Ritter Ice Arena.

Overflow areas to watch Gorbachev's speech on closed captioned, big-screen TV have been arranged in Ingle Auditorium and the Panara Theatre. Tickets for these areas, at \$5 each, went on sale April 1.

Renovation Planned To Expand Facilities In President's Home

Liberty Hill, RIT's home occupied by the president, is undergoing renovations.

Donated to RIT in 1977 by Frank Lovejoy, the house, built in 1839, provides a university setting for enhancing community and establishing a dialogue with students, faculty, staff, and national and international guests. More than 1,200 guests have attended meetings, conferences, and dinners since last summer.

The renovations will allow seating for up to 50 dinner guests. The present facility is taxed at 20. Increased numbers of meeting guests will also be accommodated in the future. In addition, handicapped accessibility will be provided along with a needed powder room, kitchen catering, plumbing, and electrical systems upgrades.

In addition, the remodeling will provide guest quarters for visiting educators and dignitaries.

The remodeling cost of \$400,000 is expected to be recouped through enhanced ability to host guests for development purposes.

When President Simone joined RIT, efforts had been made to locate a residence as an alternative to renovations. None was found that could provide adequate parking.



STEELED FOR THE FUTURE . . . USX Corporation's U.S. Steel Group president Thomas J. Usher, left, talks with President Simone and College of Business dean Richard N. Rosett at a luncheon prior to the Gasser Lecture March 16. Usher spoke to a crowd of nearly 300 about how Total Quality helped his steel company rebound and improve the way it does business.

NEWSMAKERS

- **Dr. Albert J. Simone**, president, was elected to Marine Midland Bank's Rochester board of directors. Marine Midland, a New York State regional banking institution, is an indirectly held, wholly owned subsidiary of HSBC Holdings, one of the world's largest capitalized banking groups. He spoke on partnerships to the Rochester Rotary Club March 25.
- At the semi-annual Mathematical Association of America's Seaway Section Meeting Nov. 13-14 at Cornell University, professor **Rebecca Hill**, Department of Mathematics, College of Science, presented the lecture "Students' Difficulties in Calculus." Professor **Thomas Upson** presented "Mathematics in Distance Education."
- Six faculty members of the Department of Mathematics, College of Science, presented papers at the 19th Annual Fall Scientific Paper Session of the Rochester Academy of Science held at RIT Nov. 7. Professors **Patricia Clark** and **Rebecca Hill** jointly presented "Visualization in the Calculus Sequence via *Mathematica*." Professor **Alejandro Engel** presented "Growth Models for Confined Caiman Crocodilus Yacare." Professor **David Farnsworth** presented "An Interesting Feature of the Product-Moment Correlation Coefficient." Professor **Edwin Hoefer** presented "Signal Processing and Data Compression," and professor **Sophia Maggelakis** presented "A Simple

Mathematical Model of a Cancer Cell Culture Growth by Diffusion of Tumor Growth Factors."

- **Sam Abrams**, Language, Literature, and Communication, College of Liberal Arts, edited a book, *The Neglected Walt Whitman: Vital Texts*, published by Four Walls Eight Windows of New York City.

- **Peter Anderson**, professor, Department of Computer Science, wrote an article, "Fast Rendering," that appeared as the cover story in the February 1993 issue of *Computer Language* magazine.

- **Bruce A. Austin**, William Kern Professor in Communications, College of Liberal Arts, participated in a panel on current trends and research on moving image preservation at the Association of Moving Image Archivists annual conference in San Francisco.

- **Dr. Maurino Bautista**, Department of Mathematics, College of Science, presented the paper "Visualization in Linear Algebra" at the National Science Foundation-sponsored workshop "A Computer on Every Desk," held at Ithaca College in June. He also participated in the panel discussion "CAS in Upper-Level Mathematics Courses: Results of a Five-Day Conversation" at the Fifth Annual International Conference on Technology in Collegiate Mathematics, held Nov. 12-15 in Rosemont, Ill. Bautista presented a colloquium lecture, "MAPLE and Boundary Value Problems," at Mercy College, Dobbs Ferry Campus, Dec. 3.

- **Donald Beil**, professor, NTID Applied Computer Technology, was among 250 Peace Corps volunteers marching down Pennsylvania Avenue with President Clinton January 20 during the inauguration parade. Beil, who served as a Peace Corps volunteer teaching mathematics at a high school in Hargeisa from 1964-66, carried the flag of Somalia during the parade. His wife, Marian Haley Beil, a former math teacher in the Peace Corps, also marched in the parade. The Beils remain active in the Peace Corps through the return volunteer movement.

- **Marcia Birken**, professor, Department of Mathematics, College of Science, and **Anne Coon**, professor, Language, Literature, and Communication, presented a paper, "A Venn Diagram for Learning: Overlapping Classroom Experiences for First-Year Students," at the Instruction Across the Disciplines conference sponsored by the Institute for the Study of Postsecondary Pedagogy in Albany in November. They also wrote the chapter "A Dialogue Across the Disciplines: Two Voices on Problem Solving" in the book *The Critical Writing Workshop*, published by Boynton/Cook. They presented an invited faculty development workshop, "The (Liberal) Art and Science of Critical Thinking," at Finger Lakes Community College of Canandaigua, N.Y., in October, sponsored by the Center for Teaching Excellence. Birken also wrote eight scripts for videos being marketed with the Harper Collins textbook *College Algebra* by M. L. Lial *et al.*

CALENDAR

April 8-30—exhibit: paintings by Ukrainian artist Mikhailo Popov; 8:30 a.m.-4:30 p.m., Mon.-Fri., opening reception 4-6 p.m., April 9, Switzer; call -6855 (V/TTY)

April 9—movies: *Night on Earth* at 7 p.m. and *Taxi Driver* at 9 p.m., Ingle

April 9—reception: opening of exhibition of graduate work in partial fulfillment of requirements for MFA degree, School of Art and Design and School for American Crafts; 7-9 p.m., Bevier

April 9—sports: men's baseball vs. Skidmore; 1 p.m.

April 10—sports: men's baseball vs. Union; 1 p.m.

April 10—sports: men's lacrosse vs. Rensselaer; 3:30 p.m.

April 11—movie: Spring Film Series with Carl Dreyer's *Passion of Joan of Arc*; 2 p.m., Carlson auditorium

April 13—Length of Service Employee Reception, 3-5:30 p.m., Johnson

April 13—sports: softball vs. Oswego; 3 p.m.

April 13—sports: men's baseball vs. University of Rochester; 1 p.m.

April 13—meeting: Alumni Executive Council; 4:30-6 p.m., Alumni Room, Union

April 14—sports: lacrosse vs. Ithaca; 3 p.m.

April 14—sports: men's tennis vs. Ithaca; 4 p.m.

April 14—workshop: Library Information Retrieval—"Using CARL on the InfoNet"; noon, 3650 Wallace

April 15—Inauguration of Dr. Albert J. Simone; 1:45 p.m., Ice Arena

April 15—sports: men's baseball vs. St. John Fisher; 3 p.m.

April 15-18—theatre: *Meta*, co-produced by NTID Performing Arts and LIGHTS ON! Deaf Theatre, written by Patricia Durr; Panara; \$3/students, \$5/others; call -6254 for times (V/TDD)

April 15—RHA "Dating Game"; 8-11 p.m., Ritskeller

April 15—Outstanding Undergraduate Scholarship Awards Ceremony, 5 p.m., Ingle

April 16—seminar: "Stereotypes of Women," part of Women's Self-Esteem Series; noon-12:30, Clark A, Union

April 16—sports: men's baseball vs. Ithaca; 1 p.m.

April 16—movie: *Malcolm X*; 7 p.m., Ingle

April 16—music: TGIF in the Ritz with Urban Squirrels and free pizza; 5-7:30, Ritskeller

April 17—comedy: "Punchline" game show with free prizes; 8 p.m., Union cafeteria

April 17—sports: men's baseball vs. Hobart; 1 p.m.

April 18—music: RIT Philharmonia Concert; 3 p.m., Ingle

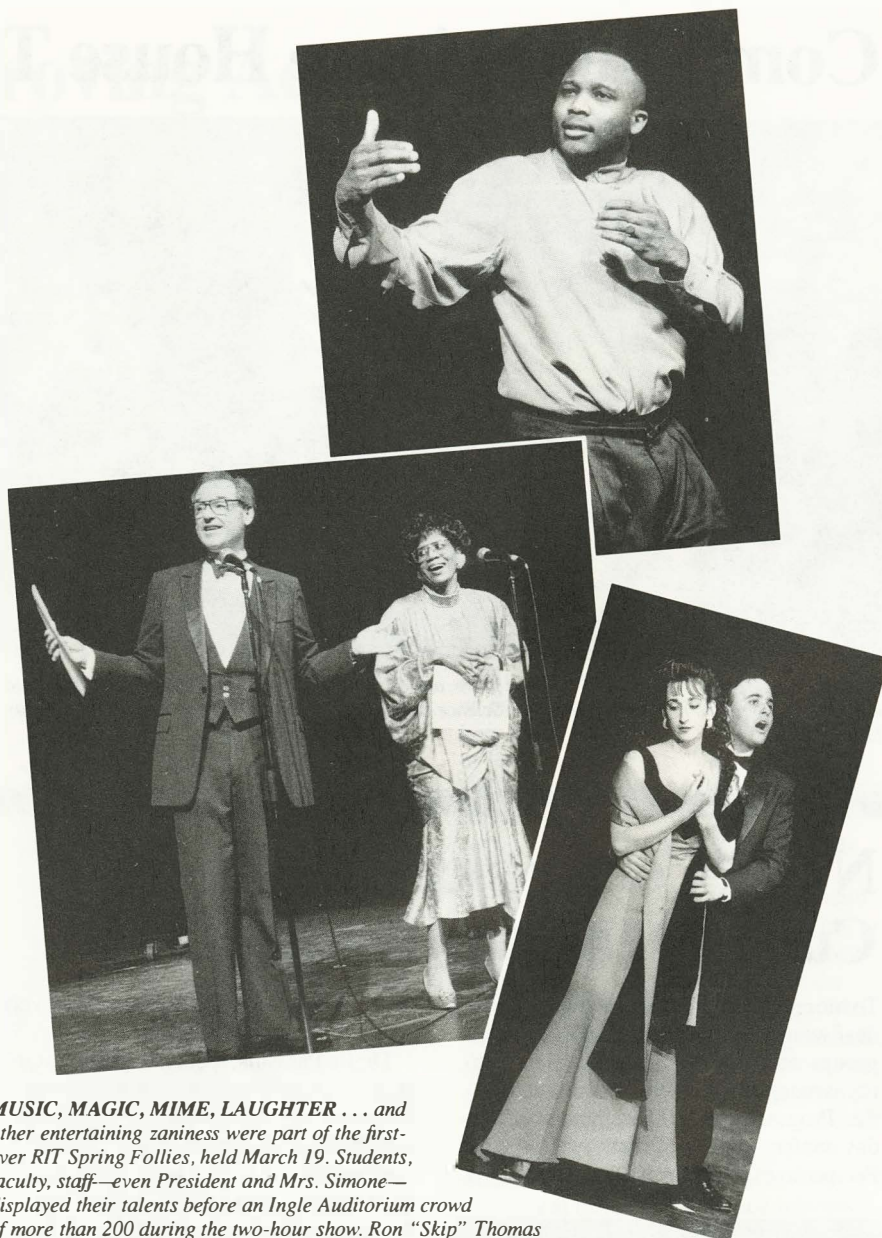
April 20—sports: men's tennis vs. Nazareth; 3 p.m.

April 22—sports: softball vs. Cortland; 3 p.m.

April 22—lecture: "Getting Serious About Inclusion" by John Hockenberry, correspondent for National Public Radio and anchor of "Talk of the Nation," part of Gannett Lecture Series; 7:30-9:30 p.m., Webb

April 22—music: "Thursday in the Ritz" with Kirk Edwards, free admission/munchies; 8-10:30 p.m., Ritskeller

April 22—lecture: *Orgullosos De Ser Hispanos Sordos!* by deaf/Hispanic advocate Angel Ramos, part of Deaf Speakers Series; 4-5 p.m., Ellington/Peterson/Bell halls first-floor lounge



MUSIC, MAGIC, MIME, LAUGHTER . . . and other entertaining zaniness were part of the first-ever RIT Spring Follies, held March 19. Students, faculty, staff—even President and Mrs. Simone—displayed their talents before an Ingle Auditorium crowd of more than 200 during the two-hour show. Ron "Skip" Thomas (top) performed a sign mime to Luther Vandross's "Love Won't Let Me Wait," and Marie Adornato and Chris Pangiotopoulos (right) sang selections from *The Phantom of the Opera*, while master and mistress of ceremonies Jerry Argetsinger and Arlette Miller Smith dazzled the crowd with magic and humor.

News & Events is produced biweekly by RIT Communications; Jack F. Smith, vice president. Please send comments to *News & Events*, Communications, Eastman Building. **Editor:** Trudi Marrapodi **Designer:** Lynette Thelen **Contributing writers:** Sarah Breithaupt, Katie Cole, Roger Dykes, Neil Fagenbaum, Laurie Maynard, Charlene O'Hanlon, John Tonello, Bonnie Travaglini, Diane Zielinski, NTID Public Affairs **Typesetter:** Sarah Southgate

RIT Endowment \$203.8 Million

RIT's endowment reached a market value of \$203.8 million as of Dec. 31, 1992. According to William Dempsey, vice president for Finance and Administration, the endowment's total return for fiscal year 1992 was 17.6 percent, outperforming the college/university average of 13.1 percent.

The endowment flourished over the past 10 years, escalating from \$58.6 million on June 30, 1982, to \$203.8 million by Dec. 31, 1992. This appreciation of the endowment has come primarily from growth. On June 30, 1992, when RIT's endowment's market value was \$190.9 million, it ranked 87th in size among those of 419 colleges and universities polled nationwide, including Harvard University, Yale University, and Massachusetts Institute of Technology.

Dempsey attributes RIT's growth to the endowment committee's selection of the endowment managers, a strong showing by domestic equity managers, and the overall direction of the investment aims of the Institute.

RIT's well-diversified endowment is managed by 15 managers, including large cap, small cap, and international equity; fixed income; real estate; and venture capital managers.

NEWS & EVENTS

Rochester Institute of Technology

One Lomb Memorial Drive
Rochester, NY 14623-5603



610
LIBRARY
BLDG - 005
BODENSTEDT

JAMES

C