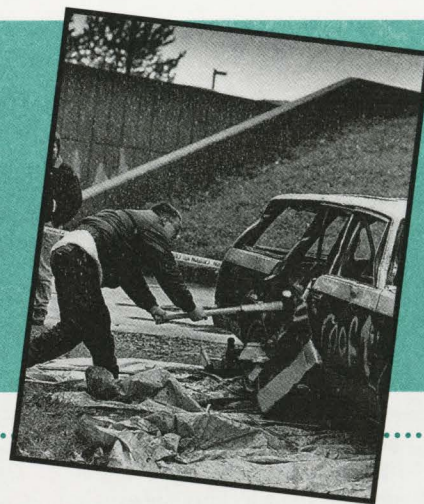


- 2 CAB fun to beat the winter blahs
- 2 Canadian photo alum Evergon to appear
- 3 Profiles: RIT food professionals
- 4 'Degrees of Guilt' theme of film series

2 A smashing success



Santa Claus is coming to town, but works here at RIT!

By Beth Merkousko Pessin

Santa's kindred spirit, a gentle soul who knows that many people of all ages "still believe," frequently is sighted on RIT's campus throughout the year. With his long silvery hair and beard, twinkling eyes and Santa-esque stature, Dave McCloskey, associate interpreter in the National Technical Institute for the Deaf's department of interpreting services, often is mistaken for his good friend, the ever-jovial Mr. Claus.

McCloskey, who's had a close connection to the man for nearly 20 years, knows Santa almost as well as he knows himself. McCloskey's desk in the Carey Building even sports several photos of the jolly fellow. In fact, it was McCloskey who assisted in arranging a personal interview during a time of year when Santa typically spends his waking hours listening to Christmas wish lists and visiting with scores of people who still find a special bit of magic in the season. As he does every year, McCloskey also arranged a special visit with Santa for some faculty and staff members and their kids.

Although Santa brings joy to the lives of many and is the guy that kids dream of, he believes he is the fortunate one.

"I'm the luckiest person in the world," says Claus. "For five to six weeks every year, I see the world through a new set of eyes. I get the opportunity to see that children have not really changed over the years. It's refreshing to know that children still look at the world with unblemished eyes—I know that children will make things work out; it gives me hope for the future."

In his bright red garb with fluffy white trim, this Santa has greeted kids as young as three days to adults in their 90s. Last year, some 40,000 people visited him at the Great Northern Mall in North

Olmsted, Ohio, his temporary holiday headquarters. Santa's day begins at 11 a.m. and ends at 9 in the evening, with only an hour break at 3 p.m. to feed his reindeer.

A testament to the jolly fellow's never-waning popularity, visitors often wait one to two hours just for the opportunity to chat or have their photo taken with him. And it's not just people that Santa sees. Last year, the mall hosted a "pet day," and Claus was photographed with some of his more unusual visitors—a 110-pound boa constrictor, billy goats and a race horse.

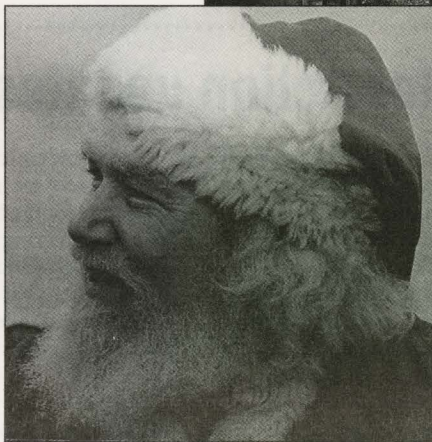
For those of you who might think Santa is only on the gift-giving end, you'll be happy to know that he does receive special tokens, especially from children.

"Children make cards and decorations that I hang on the tree," he says. "I also receive lots of home-made cookies."

Although he appreciates such heartfelt gifts, it's the intangible things—the smiles that light children's faces, the innocence and seeing that light in the eyes of adults—that create the memories he carries throughout the years.

"Santa gets love from lots of people," he says. "That's the best gift of all."

On Dec. 25, after Santa's finished delivering goodwill and gifts, he'll take a well-deserved week-long break to recoup and reflect before returning to his post-season anonymity.



Dave McCloskey

Academic Senate approval caps year of intense campus discussion

By Bill McKee

Following nearly a year of campus-wide discussion, Policy Council recommended approval of the creation of an Academic Senate at its mid-November meeting. President Simone called the topic "the most discussed issue ever to come before Policy Council." The president formally approved the issue following the Policy Council vote.

According to Bruce Oliver, Faculty Council chair, the Charter of Academic Governance means that a new Academic Senate will replace the Faculty Council and better align RIT's system of shared governance with faculty responsibilities on academic matters.

"All issues of an academic nature will now be brought by colleges to standing

continued on page 4

Przybylowicz steps down; strategic plan complete

Dr. Edwin Przybylowicz announced he will step down from his position as director of RIT's Center for Imaging Science effective Dec. 31.

According to Dr. Stanley McKenzie, provost and vice president for Academic Affairs, "In joining RIT, Ed Przybylowicz accepted a two-year contract to work with the faculty to develop a strategic plan and establish a greater sense of team in the Center for Imaging Science. He has accomplished those charges over the last 18 months. Now the CIS task relates to governance and implementation of the strategic plan, areas where other faculty can contribute. RIT will continue to rely on his advice, along with input from the faculty, in appointing an interim CIS director."

A national search for a director will begin next spring.

Przybylowicz was named director of RIT's imaging program in 1994. He retired in 1991 as senior vice president and director of research at Eastman Kodak Company after 35 years of service. Since his retirement, Przybylowicz has been active in a number of programs focused on the commercialization of technology and stimulating closer working relationships between industry and academia.

He holds four patents and has published more than 20 technical papers, in addition to writing two books. He has lectured extensively on various imaging and technology topics, including the management of technology.

Bookstore bargains sure to add holiday cheer

Campus Connections will hold its annual Student, Faculty and Staff Appreciation Day Thurs., Dec. 14, from 8:30 a.m. to 8:30 p.m. During the event, shoppers will receive a 10 percent discount on most items. Excluded from the sale are computer hardware and software, textbooks, photography equipment, special orders and Institute purchases.

Along with the special prices there will be hourly drawings for door prizes, complimentary cookies, a gourmet coffee sampling from 11 a.m. to 1 p.m., live music late in the day and several visits from Santa Claus.

For students only, a Macintosh PowerBook 165 computer will be given away during a special drawing. To be eligible, students must sign up Dec. 14 only.

Cochran discusses racial issues Dec. 14

Student Government presents the 1995 Horton Distinguished Speaker Series featuring attorney Johnnie L. Cochran, who will discuss "Bridging the Racial Divide" at 7 p.m., Thurs., Dec. 14, in Clark Gymnasium.

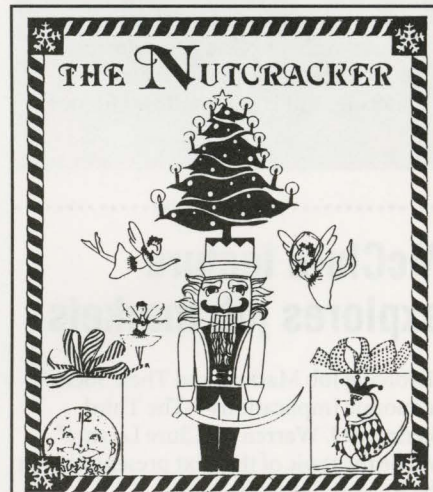
Cochran will share his firsthand experience with the American justice system and discuss controversial issues evoked by his career as a criminal lawyer in the public eye. Tickets, at \$3 for students and \$6 for faculty and staff, are on sale at the Candy Counter in the Student Alumni Union. Tickets at \$12 for the general public go on sale Dec. 12.

The presentation will be interpreted for hearing and deaf audiences. For more information, call the Student Government office at -2203.

Find one-of-a-kind gifts at student crafts sale

For that unusual, one-of-a-kind gift—like silver-wrought earrings, flowing silk scarves, intricately crafted wood boxes and sparkling blown-glass ornaments—holiday shoppers must catch the annual student crafts sale, 9 a.m. to 5 p.m., Thurs. through Sat., Dec. 14 to 16, in the Student Alumni Union.

The array of art and craft creations made by students in the School for American Crafts offers interesting, affordable gifts. Prices, based on student experience, materials and time invested, typically range from \$10 to \$50. Many of the SAC students, from first-year to graduate level, rely on the sale to defray expenses throughout the school year.



The Ballet Theatre of Pennsylvania will perform *The Nutcracker* at 7:30 p.m., Fri., Dec. 15, in Ingle Auditorium in the Student Alumni Union. The ballet, an RIT Spotlight Cultural Series presentation, is sponsored by the College Activities Board. Tickets, at \$3 for students, \$6 for faculty and staff and \$10 for the general public, can be purchased from 10 a.m. to 2 p.m. in the CAB office in room 6673 of the Union. For more information, call -2509.

'Big Shot' to focus on eerie setting

People passing by Mount Hope Cemetery around 6 p.m. on Wed., Dec. 13, may wonder at the throng of mysterious moving lights amongst the graves. They needn't worry: this will be the scene of RIT's ninth annual "Big Shot," combining old and new photographic technology to light up a large area with only handheld flashes. About 100 student volunteers and photography buffs will continuously move and "flash" for 15 to 30 seconds at a time to light an area of selected gravesites and crypts. Big Shot shutters down at 6:10 p.m. All hands are welcome to "flash" on command. (Call -2775 to volunteer.) "We'll be setting up the cameras and figuring out film settings for the weather—no matter what it's like!—around 5 that night," says Michael Peres, biomedical photographic communications chair in the School of Photographic Arts and Sciences.

Faculty invited to submit papers

Ray Gehani, assistant professor of management in the College of Business and chairman for the College on Innovation, Technology, Entrepreneurship and Engineering Management invites interested RIT faculty to submit papers for presentation in the National Conference of the Institute for Operations Research & Management Science. This will be held in post-Olympic Games Atlanta Nov. 3–6, 1996. The cluster chair for the conference is William Riggs, professor at Georgia Institute of Technology. For more details, call Gehani at -6072.

Be 'desserted' by HEOP Dec. 14

Sweet potato pie, coconut cake, pecan pralines, fudge, peach cobbler... the Higher Education Opportunity Program tempts one and all to indulge themselves at its "Southern Just Desserts" reception, from 2:30 p.m. to 4 p.m., Thurs., Dec. 14, in the Skalny Room of the Schmitt Interfaith Center.

HEOP will host the reception to recognize its students' and staff's work, strengthen ties with the RIT community and thank RIT supporters for writing letters and campaigning in Albany last April to fight state cuts to its program.

"Southern Just Desserts" features some of the mainstays of the traditional Southern cook, compliments of Gladys' Place, Eleanor's, Cathy's Catering, and HEOP staff and friends.

McClure lecture explores job markets

"Evolving Job Markets and Their Socio-economic Implications—The Third Biennium J. Warren McClure Lecture" will be the topic of the next presentation in the Faculty Colloquia Series.

Eugene Fram, J. Warren McClure Research Professor of Marketing in the College of Business, will present the colloquium from 3 to 4:30 p.m., Tues., Dec. 12, in the Carlson Center for Imaging Science auditorium.

Lawrence W. Belle, professor in the College of Continuing Education, and V. V. Raman, professor of physics in the College of Science, will serve as respondents, with President Simone moderating.

Light refreshments will be served following the discussion. Interpreters will be available upon request; contact Delphine Hoak at -2395.

National search to begin for NTID VP

By Beth Merkousko Pessin

A national search for a vice president for the National Technical Institute for the Deaf will soon be under way. President Simone selected 11 individuals to serve on the search committee and named Carole Sack as chairperson and Harry Lang as vice chairperson.

"These 11 individuals are members of the community who understand and appreciate the rich history of NTID," said Simone in naming the committee.

Simone set a May 1996 deadline for the committee's recommendation so that he can name a vice president for NTID before graduation. Simone stated that he expects "each final candidate put forward by the committee to be fluent in sign language and very knowledgeable regarding the wide array of deaf experiences in this country."

The vice president for NTID will be the chief executive officer of the college and will focus primarily on fund raising and external relations—governmental as well as corporate, foundation, philanthropic and organizations concerned with the education of people who are deaf and hard of hearing. In addition, the vice president will be a member of the president's administrative council and will serve with the other vice presidents in advising Simone on

policy formation. The vice president and the NTID dean, who serves as NTID's chief academic and operating officer, will establish NTID's vision, budget and staffing plan in accordance with RIT's strategic plan.

James DeCaro, dean of NTID for 10 years, also has served as NTID's interim director since Dr. William Castle's resignation in December of 1994.

CAB announces Winter Quarter lineup of fun for the snowy season

The College Activities Board announces a lineup of Winter Quarter events to keep students smiling throughout the snowy season. For fans of ska music, CAB presents Bim Skala Bim and Regatta Sixty-Nine at 8 p.m., Sat., Dec. 16, in the Student Alumni Union cafeteria (doors open at 7 p.m.). Tickets are \$3 at the door for the RIT community only; RIT identification cards will be required.

The Harlem Wizards, "the grassroots version of the Harlem Globetrotters," will bring their hoop-spoofing, rim-rocking basketball trickery to campus. The team will take on RIT in an exhibition basketball game to support RIT's United Way Campaign at 7:30 p.m., Sat., Jan. 6, in

Clark Gymnasium. If you're interested in playing on RIT's team, call Barbara Asam at -2509. Tickets, at \$3 for students, \$5 for faculty and staff and \$7 for the general public, will go on sale on Mon., Dec. 18, at the Candy Counter in the Union.

If you're feeling lucky as the New Year sets in, come to RIT's Vegas Night from 8 p.m. to midnight, Sat., Jan. 13, in the Union cafeteria and lobby. CAB teamed up with the Residence Halls Association and the Off-Campus Student Association to plan a festive casino evening with Las Vegas flair to benefit RIT's United Way campaign. Mark your calendar now and look for more information in the Jan. 11 issue of *News & Events*.

Agenda for Action updates progress on strategic goals

The Agenda for Action 1994–1996, which set the priorities for the first two years of the RIT Strategic Plan implementation, was approved by President Simone one year ago this month. The Agenda for Action Committee reported in May on the significant progress that occurred in the first six months of implementation. At this point, academic program review and administrative program review, both longer-term projects called for by the Strategic Plan, are well under way.

The academic program review process is a study of all RIT's undergraduate and graduate programs to determine the extent to which the Institute is achieving Strategic Goal 5, which states in part that "RIT will earn national and international recognition for distinctive, quality academic programs..." Each academic program is being measured on four criteria: quality, centrality, financial viability and marketability, the definitions of which were approved by Policy Council in May 1995. By early February 1996, when academic program review is completed, RIT will know the relative position of each academic program in the overall program portfolio on each of the four criteria. With that information, the deans and the provost will make judgments about program enhancement, maintenance, consolidation or discontinuance. In the event that a dean makes an initial recommendation to discontinue an academic program, the official RIT Policy on Program Discontinuance will be followed.

Administrative program review will determine in part the extent to which RIT is achieving Strategic Goal 9, the productivity goal. The administrative program review was begun deliberately after the initiation of the academic program review process because the results of academic program review could have an impact on RIT's administrative structure. The vice presidents have asked that individual department heads in each division provide information on the extent to which the unit is addressing five criteria: centrality of administrative service, contribution to the achievement of RIT strategic goals and objectives, quality of administrative service, cost effectiveness and organizational effectiveness. Each vice president will prepare divisional summary reports and recommendations that identify administrative services that should be enhanced, maintained, modified or eliminated. These initial reports and recommendations are due Feb. 15, 1996. Administrative Council will review the divisional summary reports and prepare a draft of the consensus recommendations by April 26. A final report of recommendations must be submitted to the president by June 15 for implementation.

Both academic and administrative program review are integral parts of the RIT self-study for the Middle States Association. The RIT Steering Committee for Middle States developed and submitted a self-study design that asks to what extent have the goals and objectives of the Strategic Plan been achieved. RIT received word in October that the self-study design was approved. The reports generated through the academic and the administrative review processes will become part of the

documentation RIT will provide to the site visit team in the spring of 1997. Additional reports will be generated by committees that will be established to study the extent to which other strategic goals and objectives are being achieved. Those committees will be appointed and charged by January 1996. The committees will be chaired by members of the Agenda for Action Committee, which is charged to monitor implementation of Strategic Plan.



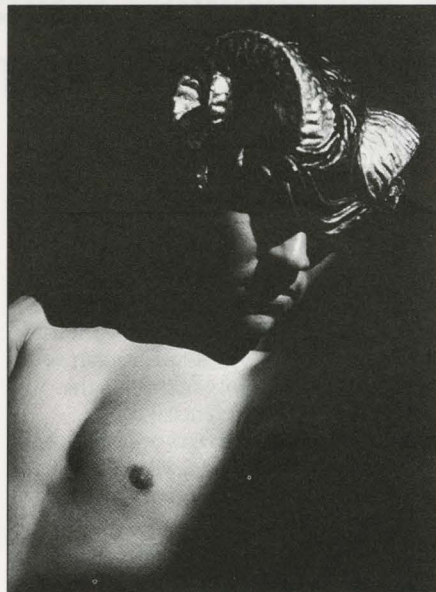
SMASHING OUT STRESS... RIT's Society of Automotive Engineers club gave stressed-out students a way to vent during their "Smash-a-Car" fund raiser on Nov. 14. Students and staff members whacked away at a 1980 Buick station wagon, donated by Northside Salvage. The club raised more than \$100 towards their upcoming trip to Detroit for a national SAE meeting.

Arnold Lecture Series presents Canadian photographer Evergon

RIT's Charles Arnold Lecture Series presents Canadian photographer/artist Evergon, a 1974 MFA alumnus of the School of Photographic Arts and Sciences, in a talk at 7 p.m., Thurs., Dec. 14, in the auditorium of the Carlson Center for Imaging Science.

Of recent fame for his solo Rambo Series, Evergon specializes in Polaroid and xerography work. He has exhibited at renowned galleries, in groups and solo, around the world, including the International Museum of Photography at George Eastman House, the Islip Art Museum in New York, the Museum of Modern Art in Paris and the Andrea Rugieri Gallery in Washington, D.C. His works are held in numerous collections, in Canada, the U.S. and Germany.

Evergon joins other successful SPAS alumni as speakers in the Arnold series. The lecture is free, handicapped accessible and sign interpreted.



Evergon 8 ©1995

Distinguished Professorships: “An Environment In Which Master Teachers Can Flourish”

Rochester Institute of Technology's distinguished professorships reflect the preeminent value associated with gifted teachers who can inspire student interest and creative pursuit in a particular work speciality," says President Simone.

"Distinguished professorships throughout the academic world create an environment in which master teachers can flourish."

According to Academic Vice President and Provost Stanley D. McKenzie, "RIT is fortunate to be able to offer 21 uniquely funded professorships. These positions:

- serve to recognize outstanding teachers through the highest honor that can be conferred by an institution on a member of its faculty.
- aid in attracting and retaining first-rank faculty talent, advancing teaching quality throughout RIT's eight colleges.
- serve as a special platform from which these outstanding teachers can advance the best practices in their respective fields.
- are expressions of farsighted and generous benefactors who may wish to perpetuate an interest in a field of study that played an important role in the fulfillment of their own lives."



Artist-in-Residence Professorship
School for American Crafts/College of Imaging Arts and Sciences

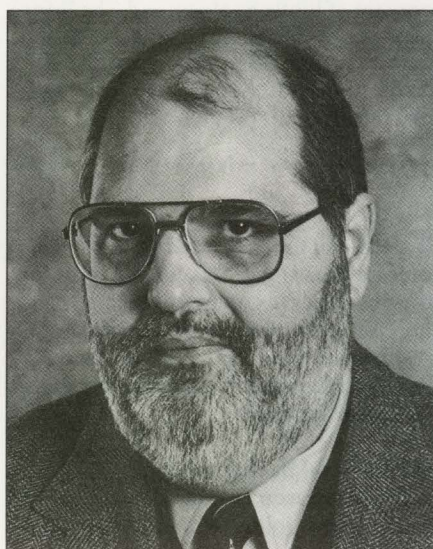
Wendell Castle

Professional Background:

Became artist-in-residence at RIT in 1984. RIT acquired Castle's woodworking school, integrating it into the Woodworking and Furniture Design Department, School for American Crafts, 1989. Castle continues to work with apprentice woodworkers and participates in conferences and lectures at RIT.

Highlights:

Renowned woodworker and sculptor has brought furniture to an art form that aesthetically satisfies, sometimes provokes, for more than 30 years. His work is part of the White House Collection of American Crafts, National Museum of American Art, Renwick Gallery, Smithsonian Institution. Famous creations include a dining room table replete with coat carved atop the surface, giant clock for Toronto, celebrated 500,000th Steinway piano, and Greater Rochester International Airport clock. Called "art that works," his pieces are in numerous permanent private and corporate collections, including the Metropolitan Museum of Art; the American Craft Museum; the Renwick Gallery; American Express Corporation; Bausch and Lomb's new corporate headquarters, Rochester; and private collections of the late Malcom Forbes, Mr. and Mrs. Harvey Kaplan and Edward Moulthrop. Has exhibited at the American Craft Museum; Peter Joseph Gallery; Los Angeles County Museum; Grassi Museum in Leipzig, Germany; Crafts Council Gallery of Dublin; and Oslo Museum of Applied Art in Norway. Work has been featured in numerous books and national periodicals over the years. Was a panelist at the American Craft Museum in New York on Handmade in America: Craft in the '90s.



Melbert B. Cary Jr. Professorship
in Graphic Arts

School of Printing Management and Sciences/College of Imaging Arts and Sciences

Frank J. Romano

Professorship:

Established in 1969 (endowed 1982) by Mary Flagler Cary Charitable Trust to provide permanent memorial to Cary, former president of American Institute of Graphic Arts, and perpetuate his interest in the field

Focus:

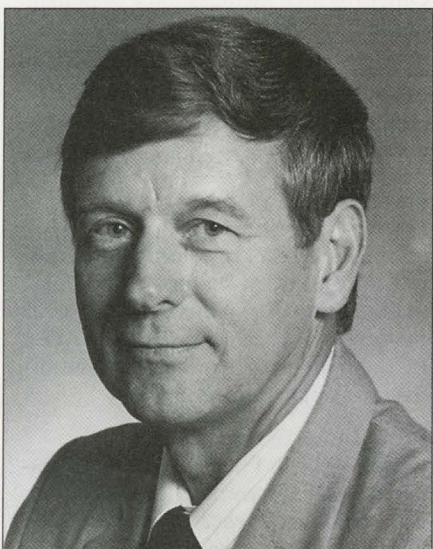
To move into new areas of digital media, including World Wide Web publishing and distributed digital printing in color

Professional Background:

Editor of *TypeWorld/Electronic Publishing* magazine; expert in typesetting, printing and graphics, digital media; more than 25 years experience in graphic arts; named to position January 1993

Highlights:

Since named Cary Professor, has published three books on electronic publishing; started six special topics courses involving electronic and digital publishing, two of which have been accepted as courses offered by the School of Printing Management and Sciences; presented five keynote addresses at major industry conferences and 61 professional seminars; has written 47 articles for industry publications; wrote the "Printing" section for the Encyclopaedia Britannica Yearbook; wrote the "Typesetting" and "Printing" sections of the McGraw-Hill Encyclopedia of Science and Technology; wrote the "Typesetting" section of the World Book Encyclopedia; served on numerous Institute committees, including development of the Center for Digital Media and the CIMS action group; and developed the annual Cary Award to recognize leaders in digital media



Roger K. Fawcett Distinguished Professorship
in Publications Color Management

School of Printing Management and Sciences/College of Imaging Arts and Sciences

Miles Southworth

Professorship:

Established 1991 through a donation from World Color Press, Fawcett family and industry colleagues. Only one of its kind in nation; established to address color quality and productivity in magazine, newspaper, and book publishing industries, as well as promotion of RIT color research activities

Focus:

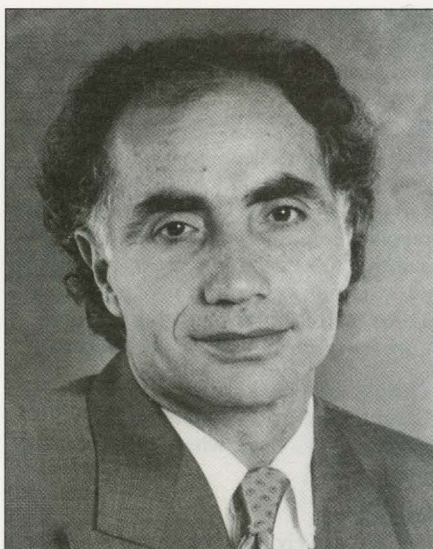
Address color quality and productivity in publications industry and promote RIT color research activities. In addition to teaching, Southworth organizes, teaches selected RIT industry seminars and short courses; guest lectures in other RIT courses

Professional Background:

Joined School of Printing faculty 1961; moved through ranks to become director 1985-91. Will retire from the faculty at the end of the academic year

Highlights:

Arranged for software and hardware donations to the Integrated Electronic Prepress Laboratory and other labs in the school, as well as donations to the school's fellowship fund; travels several times a year to South and Latin America to promote RIT and recently led a graphic arts and printing technology delegation to the People's Republic of China; consults with companies on color reproduction, quality control and new color hardware and software products; presents at industry conferences and seminars; with wife, Donna, author of numerous books on color technology; publisher (with co-authors Frank and Patty Cost) of the newsletter *Ink On Paper* and former publisher of the newsletter *The Quality Control Scanner*; contributing editor to *Printing Impressions* magazine



Benjamin Forman Professorship
in International Business

College of Business

Riad Ajami

Professorship:

Established 1986; made possible through gift from Maurice Forman to perpetuate father's interest in international business issues

Focus:

Research encompasses interests such as strategic alliances and entry strategies employed by small, medium, and multinational firms conducting business abroad; comparative economics between

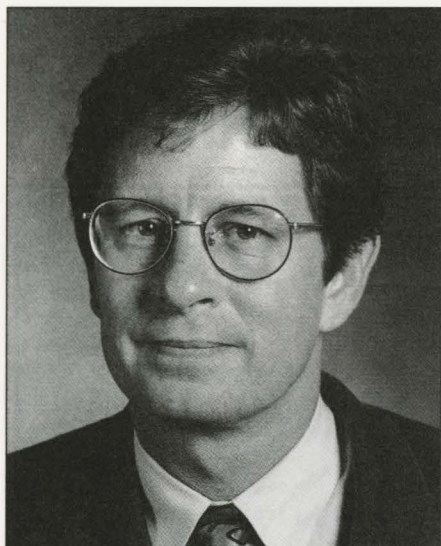
the U.S. and Japan, Germany, and Europe; and U.S. oil security and technology transfer. Strives to bring students better understanding of what he calls literacy of international business, a must in today's global marketplace

Professional Background:

Leading scholar in international business, strategic management, and oil economics; director of Center for International Business and Economic Growth at RIT. Named to professorship fall 1991; this year, will be among group of RIT professors traveling Czech Republic to teach at U.S. Business School in Prague

Highlights:

Associate editor of *Journal of Multinational Financial Management*, *International Journal of Commerce and Management* and *Journal of Global Marketing*; author of several books, including *International Business: Theory and Practice* and *International Debts and Lending*. Has written on role of regional banks in international debt crisis, international business in Middle East, and North American Free Trade Agreement; appeared on national television and radio programs, including "Nightline," "The MacNeil-Lehrer News Hour," NBC News, CNN and National Public Radio. *Management International Review*, the leading refereed journal in the field of international business, ranked Ajami as the fifth most prolific author and contributor to international business research over the past decade.



Caroline Werner Gannett
Professorship in Humanities
College of Liberal Arts

James Buchanan

Professorship:

Created in 1974 to perpetuate Mrs. Frank E. Gannett's lifelong interest in education, especially in fields with humanistic perspective

Focus:

Professorship has evolved into unique lectureship and series of year-long

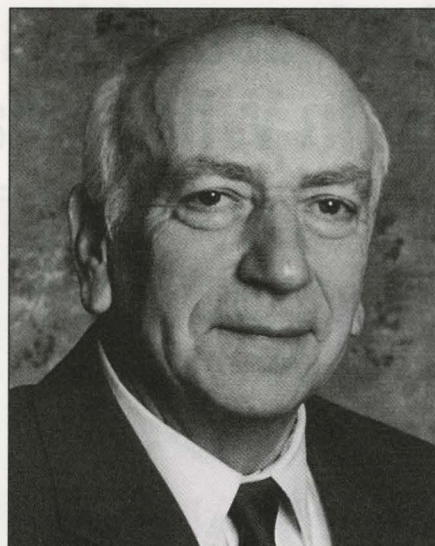
programs. As director of 1995-96 Gannett Lecture Series for Senior Seminar in the Liberal Arts, work revolves around the social and environmental impacts of science and technology and looking at what it takes to be an ethical being in an information age.

Professional Background:

Spent five years helping found the humanities division of the Hong Kong University of Science and Technology and has taught or researched around the world, including the London School of Economics, the University of Moscow and the University of Paris

Highlights:

Has worked with a number of environmental/industry conferences, including the Earth Summit/Global Forum in Rio de Janeiro in 1992, where he co-chaired the International NGO Task Force on Biotechnology, and as planner for the interdisciplinary, international conference Biotechnology and Ethics: Scientific Liberty and Moral Responsibility in Hong Kong in 1993. Works with such groups as the International Biotechnology Working Group, an oversight group of scientists, legal experts, scholars and NGOs from 20 nations seeking responsible uses and development of biotechnology; and The Prince of Wales Business Leaders Forum, bringing CEOs from 25 countries together with environmentalists. Has given more than 300 talks around the globe



James E. Gleason Professorship in Mechanical Engineering
College of Engineering

Richard B. Hetnarski

Professorship:

Established 1967, funded by estate of James E. Gleason, RIT trustee 1930-1964, to provide permanent memorial and strengthen RIT in field of Gleason's education

Focus:

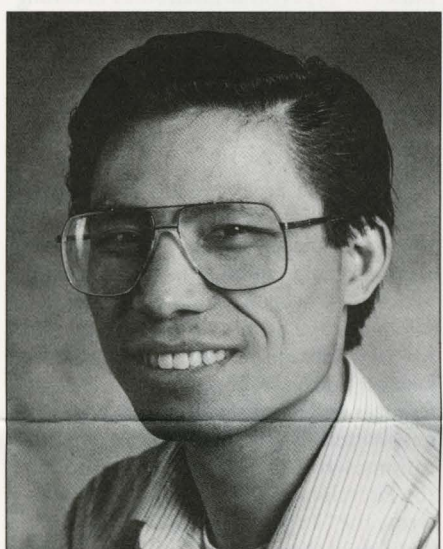
Internationally known expert in thermal stress analysis named Gleason Professor in summer 1992. Serves as senior professor in department and takes leadership role in research, teaching, and consulting activities relating to mechanical engineering and design

Professional Background:

Has been member of mechanical engineering department for 24 years.

Highlights:

Co-chaired the first international symposium Thermal Stresses '95 last June in Hamamatsu, Japan, attracting more than 200 participants from 26 countries. Honored at the conference for significant contributions in the promotion of science and engineering in the field of thermal stress and for contributions to the Japanese thermal stress community. Will host the second international symposium at RIT June 8-11, 1997. Continues joint research project with Dr. Jozef Ignaczak, Institute of Fundamental Technological Research, in "Non-Classical Problems of Thermal Elasticity," funded by the National Science Foundation and the Polish Academy of Sciences



Gleason Professorship in Photonics
College of Engineering

Guifang Li

Professorship:

Established in 1993; the Gleason Chair, funded by the Gleason Memorial Fund, supporting RIT's advancement in photonics.

Focus:

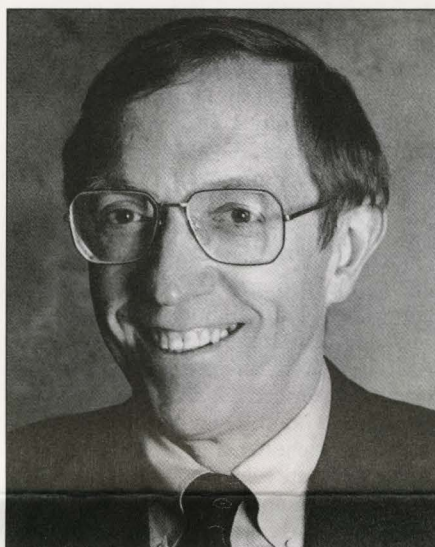
Expertise in the optics and optical communications arena. Serves as director for the photonics research program, advancing RIT in the research areas of optical communications, optical signal processing, optoelectronic integration and optoelectronic materials

Professional Background:

The first Gleason Distinguished Professor in Photonics; joined RIT in 1993 as assistant professor of electrical engineering

Highlights:

Earned the Office of Naval Research's Young Investigator award in 1994; one of 33 investigators to receive the honor from a competitive pool of 409. Program recruits university scientists or engineers who recently received a Ph.D. and show exceptional promise in teaching and creative research. Research proposal, "A Novel FM Microwave Optical Link for Antenna Remoting and Phased Arrays," explores innovative ways to relay high-frequency electric signals from a control center to a remote antenna using fiber optic links. Author or coauthor of 14 journal publications and holds two patents.



Arthur J. Gosnell Professorship in Economics
College of Liberal Arts

Thomas D. Hopkins

Professorship:

Created 1985 by friends and family of Arthur J. Gosnell to perpetuate memory of Mr. Gosnell through recognition of importance of good teaching in economics and to facilitate research into public policy questions

Focus:

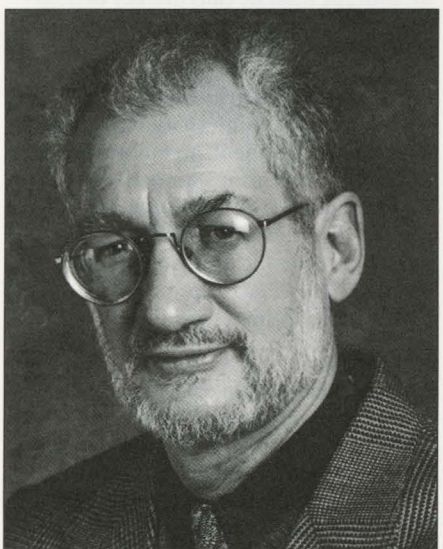
Noted economist, who has gained wide recognition for this work on regulatory reform

Professional Background:

Before coming to RIT, was deputy administrator of Office of Management and Budget's Office of Information and Regulatory Affairs and White House appointee to Council on Wage and Price Stability.

Highlights:

Activities on regulations have attracted nationwide media. Was one of five experts invited to Paris headquarters of the Organization for Economic Cooperation and Development for meeting on regulatory burden indicators. Has testified before Washington lawmakers on regulatory policy; the U.S. General Accounting Office interviewed him for advice on designing a new study of regulatory effects on business. Had regulatory work featured in the 1993 U.S. federal budget. Selected by the U.S. Small Business Administration to serve as principal investigator for a study of the distribution of regulatory burdens across businesses. Following *Exxon Valdez* oil spill in 1989, was chosen by National Research Council to study tank vessel design leading to mandates for double-hulled tankers. Other research includes value of human life and user fees



Ezra A. Hale Professorship in Applied Ethics
College of Liberal Arts

Wade Robison

Professorship:

Created 1989 through gift from William B. and Patricia F. Hale and Lawyers' Co-operative Publishing Company to establish permanent memorial to Hale, longtime and valued friend of RIT, former president of Lawyers' Co-op, and member of RIT's Board of Trustees

Focus:

Encouraging students to become more reflective about their own morals and values and to think critically about values involved in public policy decisions. Is working to weave ethics cross-curricularly into technology and business programs. Teaches philosophy courses while planning seminars and other special events

Professional Background:

Came to RIT in 1990 on leave from Kalamazoo College, where he has worked since 1974.

Highlights:

Has extensively researched and written on David Hume, 18th-century British historian and philosopher; has been president of the Hume Society since 1986. Conducted two-day conference on social work ethics examining roles of social workers; co-director of Conference on Ethics and Health Care Reform at RIT with U.S. Senator Daniel Patrick Moynihan; co-director of the Second Conference on Accounting Ethics at RIT. In 1994 was recipient of the Nelson A. Rockefeller Prize for Social Science and Public Policy for book *Decisions in Doubt: The Environment and Public Policy*. Book editor, author of numerous articles and reviews, and presenter of many papers worldwide, including the International Conference on Ethics in the Public Sector in Stockholm.



Richard S. Hunter Professorship in Color Science, Appearance and Technology
Center for Imaging Science

Roy S. Berns

Professorship:

Established 1983 by Richard and Elizabeth Hunter to enable RIT to increase research and educational efforts in basic and applied color science to benefit the many industries involved in

manufacturing colored products including imaging, textiles, paints, and plastics

Focus:

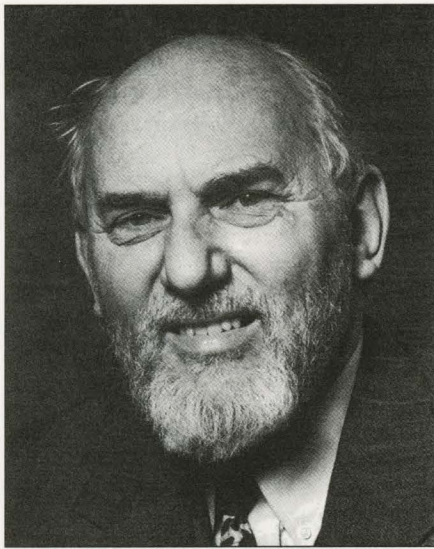
Has held professorship since 1987. A leading researcher in colorimetry, color tolerances, and modeling the color formation principles of imaging peripherals. Leads all color-related activities at RIT. Provides industrial seminars to disseminate and apply research results

Professional Background:

Came to RIT in 1984 as assistant professor in imaging science. Director of Munsell Color Science Laboratory, an internationally recognized leader in color research and education. Spearheaded the promulgation of the MS degree program in color science, the only program of its kind in the United States

Highlights:

Author of more than 50 papers on fundamental and applied color science. Chairs international technical committees on establishing a standard method to characterize the color of computer-controlled CRT displays. Derived a new color tolerance equation recommended for international use in 1995. Lectures widely to industry. Received the Inter-Society Color Council 1990 Macbeth Award, given biannually for significant contributions to color.



**William A. Kern Professorship
in Communication**
College of Liberal Arts

Michael Prosser

Professorship:

Established 1971 by Rochester Telephone Corporation to commemorate its 100th anniversary and provide memorial to its former president and member of RIT's Board of Trustees 1959–1964. Promotes a

broad program of research in communications arts and sciences

Focus:

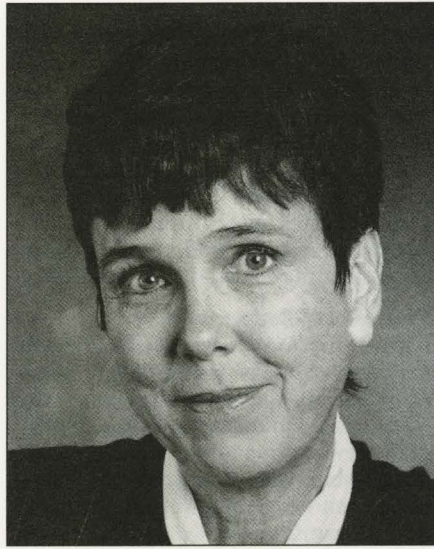
Multicultural and international communication; hopes to draw cultural, racial and ethnic communities, at RIT and in Rochester, together for conferences on urgent global, national and local affairs. Organizer of the William A. Kern Lectures centering on the crises and challenges of three themes: The United Nations at 50, Multiculturalism and Cultural Diversity, and Africa

Professional Background:

A recent Fulbright professor at the University of Swaziland; professor and graduate director of the Department of Rhetoric and Communication Studies at the University of Virginia

Highlights:

Served as editor of two-volume book published for the 25th UN anniversary; has the second 25-year multi-volume edition under way, honoring the UN's 50th anniversary. The International Society for Intercultural Education, Training and Research honored him with its only "Citizen of the World" award. Originator of Global Awareness Day (his GAD model has been duplicated across the U.S.); attracted 100 high school students from nine Rochester area schools to RIT's GAD in 1995.



**Eastman Kodak Professorship of
Industrial and Manufacturing
Engineering**

**Center for Integrated Manufacturing
Studies**

Judith Gustinis

Professorship:

Created 1990, before the Center for Integrated Manufacturing Studies project got under way; was part of initiative to support CIMS

Focus:

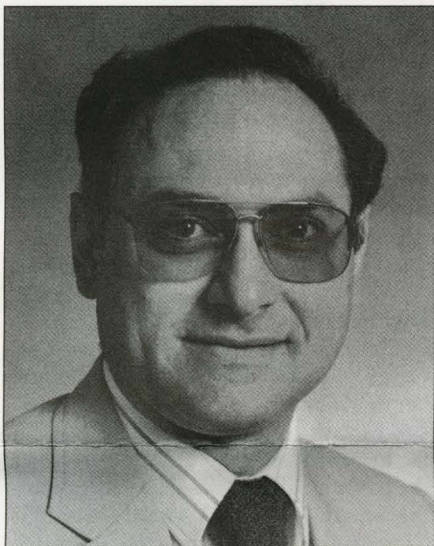
As director of CIMS, responsible for working with small- to medium-sized companies in enhancing manufacturing competitiveness by bringing together interdisciplinary teams of faculty and industry.

Professional Background:

A veteran of numerous manufacturing leadership roles; was director of the New York Manufacturing Extension Partnership of the New York State Science & Technology Foundation, Troy, N.Y., where she directed the activities of 10 regional offices and managed a budget of \$14 million

Highlights:

Held a number of senior management positions with Westinghouse Electric Corp., including manager of production and inventory control for the Unimation Division, a \$50 million subsidiary that was one of the first companies in the nation to produce industrial robotics. At Pitney Bowes, Inc. was manager of the Parts Operation Copier Division and served from 1987 to 1994 as vice president of Operations, Shipping and Weighing Systems Division. Past executive vice president and board member of the American Production & Inventory Control Society



**Russell C. McCarthy Professorship
in Engineering Technology**
College of Applied Science and
Technology

Thomas J. Dingman

Professorship:

The opening of RIT's School of Applied Industrial Studies in 1979 was the impetus for the establishment of the professorship. Friends of McCarthy, including then-

honorary RIT trustees Fred Gordon and Lucius Gordon, endowed the fund in his honor. McCarthy, manager of Rochester's Industrial Management Council for 20 years, was elected to RIT's Board of Trustees in 1947, and is currently an emeritus board member.

Focus:

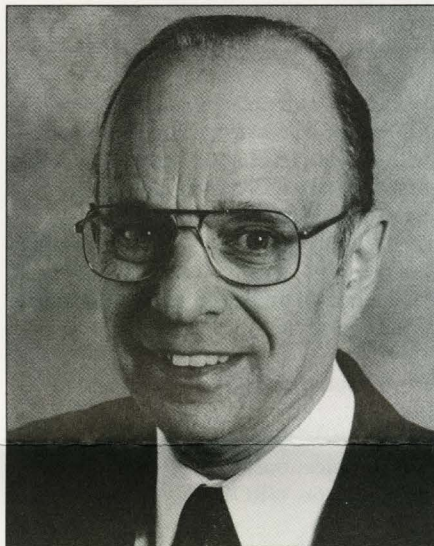
To develop programs and activities that enhance work force preparation and skills by the improvement of educational programs and the development of linkages among RIT, industry and other educational institutions, with an emphasis in the engineering technologies.

Professional Background:

At RIT since 1972; has been chair of the Computer Engineering Technology Department since 1985.

Highlights:

Member of American Society of Engineering Education and New York State Engineering Technology Association. Was principal investigator for an instrumentation and laboratory improvement program grant from the National Science Foundation for the integration of electronic design automation principles and practices into undergraduate curricula. Has consulted for Eastman Kodak Company assisting in the development of software and hardware on photoprocessors



**J. Warren McClure Research
Professorship in Marketing**
College of Business

Eugene H. Fram

Professorship:

Created 1977 by Mr. and Mrs. J. Warren McClure to perpetuate Mr. McClure's professional interest in marketing. McClure, elected to RIT's Board of Trustees in 1973, is now emeritus board member

Focus:

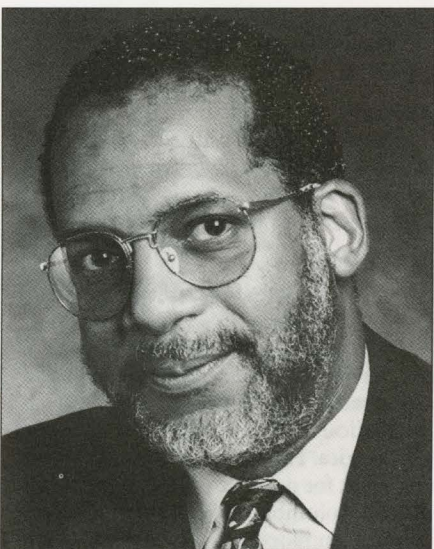
Named to professorship in 1989. Has conducted wide range of studies on marketing issues and nonprofit boards of directors. Focus centers on shrinking amount of time consumers have to shop and ways of making nonprofit boards more efficient and effective

Professional Background:

In 39th year at RIT. Began as marketing instructor in 1957, later becoming full professor, director of Center for Management Studies, and chair of marketing department. Has also been chair of International Business Program Development Committee and member of an RIT Strategic Planning Committee

Highlights:

Has written extensively on variety of business topics, including use of projective techniques in marketing research, negative appeals in promotion, time guarantees, and purchasing partnerships. Has written six books and about 85 articles; work has appeared in such prestigious journals as *Harvard Business Review*, *Marketing Research*, *Marketing Management*, *American Demographics*, and *Sales and Marketing Management*. Quoted frequently in local and regional media as key expert on marketing and business trends



**James E. McGhee Professorship
in Photographic Management**
School of Photographic Arts and
Sciences/College of Imaging Arts and
Sciences

Milton L. Cofield

Professorship:

Established 1967 by friends of McGhee and Master Photo Dealers and Finishers Association to provide permanent memorial for former vice president of Eastman

Kodak Company and lifelong friend of photofinishing industry

Focus:

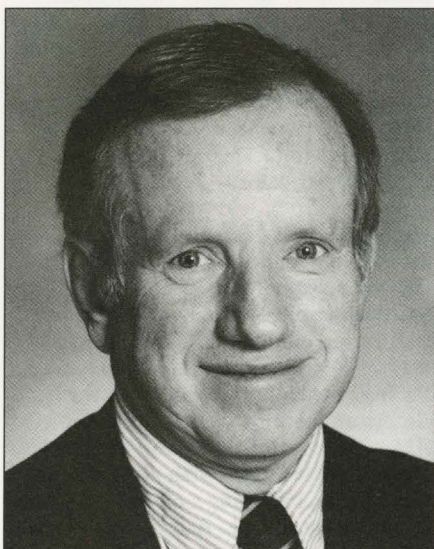
Brings a unique blend of experiences in management, science and academics, espousing "continuous learning" as a cornerstone for meaningful living and viewing technology as part of the flow of culture. Says imaging is really the field of the future and RIT is the place that will play a significant role in its evolution.

Professional Background:

Spent eight years at Eastman Kodak Company, where he worked in imaging materials science, magnetism and magnetic resonance spectroscopy; stepped into the business end in 1987 as a Kodak Fellow at Wharton. His Kodak work as a senior business analyst included health care marketing research. His work in academe began as adjunct faculty in the early 1980s at RIT and the University of Rochester. Joined SUNY Brockport in 1990 as assistant to the president.

Highlights:

Has published, lectured and taught widely in the areas of magnetic materials, physical chemistry, strategic and quality management and diversity. His "renaissance man" personality weaves together science and management, writing and publishing poetry, and community service.



**Paul A. Miller Professorship
in Continuing Education**
College of Continuing Education

Jack R. Clarcq

Professorship:

Recognizes RIT faculty making distinguished contributions to continuing education with record of matching Institute intellectual and educational resources with needs of students and the community. Established 1981 by Board of

Trustees in honor of former RIT president Paul A. Miller, 1969–1978

Focus:

Prepared a journal article on balancing issues related to social justice with those related to economic development in business curriculum; is rewriting the curriculum for CCE's three-quarter Management Process course; and is examining issues related to contract credit programs and their corporate sponsors, faculty and students and making recommendations to the interim dean

Professional Background:

Special assistant for policy analysis, Office of the Acting Director and Dean, NTID, and professor. Also coordinates College of Continuing Education's management faculty. Has served as a consultant to local and national business and educational organizations and has published or presented more than 40 papers, including several lectures abroad. Currently completing a master's degree at Cornell University

Highlights:

Received the Celebration of Excellence award for outstanding service to RIT in 1989 and the Excellence in Adjunct Teaching Award from College of Continuing Education in 1988–89



Paul and Louise Miller Professorship in Newspaper Operations Management

School of Printing Management and Sciences/College of Imaging Arts and Sciences

Owen Smith

Professorship:

Created 1977 by grant from Frank E. Gannett Newspaper Foundation to honor former chair of Gannett board and longtime member of RIT's Board of Trustees and perpetuate his interest in good management practices in newspaper industry

Focus:

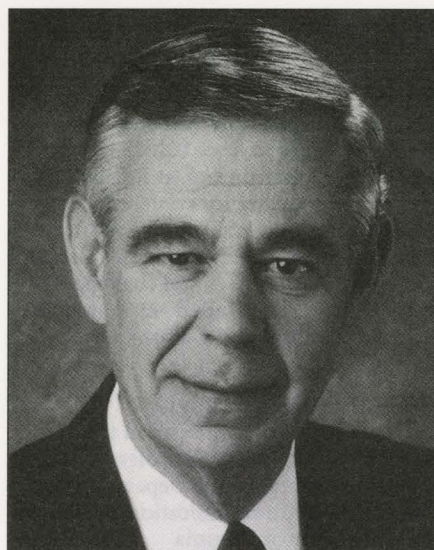
Recruiting students and integrating newspapers into electronic publishing. Is academic leader and coordinator of newspaper operations management undergraduate program. Also helps in fund raising and equipment donation and acts as newspaper industry-school liaison. Coordinates annual Isaiah Thomas Award, given to newspaper industry leaders in recognition of outstanding contributions to industry

Professional Background:

Former director of government affairs for the *Sacramento Bee*, responsible for managing and tracking emerging public policy issues related to the business operations of the newspaper and maintaining positive relationships with government agencies and commissions, and was a member of the company's strategic planning group and served on the company's labor negotiation team. Before joining the *Bee* as production director in 1985, was associated with the *Arkansas Gazette* and appointed a vice president in 1985. Received master's degree in printing technology from RIT

Highlights:

Publisher and editor of *PAID NEWS*, an Internet publication for the public sector research community. Member of the Publications Committee for the American Society for Public Administration. Had three papers accepted for conferences: The Western Social Science Conference, the Modern American Literature Conference and the Trinity Conference (political and public administration theory)



Frederick H. Minett Professorship in Continuing Education College of Continuing Education

R. Carlos Carballada

Professorship:

Established 1978; brings distinguished

Rochester-area professionals to share professional knowledge and experience with RIT students and faculty. This is the first time two individuals have been named co-Minett professors.

Focus:

Will teach a graduate course in human resources

Professional Background:

President and chief executive officer of First National Bank of Rochester

Highlights:

Career in management began at Ashland Oil and Refining Company; then turned to finance at Manufacturers and Trading Trust Company in Buffalo, Citizens Central Bank, Central Trust Company and First National. Was first elected a regent-at-large in 1978, elected vice chancellor of the New York State Board of Regents in 1985, elected chancellor in 1991; now serves as a regent. Has also served on many community boards



Frederick H. Minett Professorship in Continuing Education College of Continuing Education

Liz Vega

Professorship:

Established 1978; brings distinguished

Rochester-area professionals to share professional knowledge and experience with RIT students and faculty. This is the first time two individuals have been named co-Minett professors

Focus:

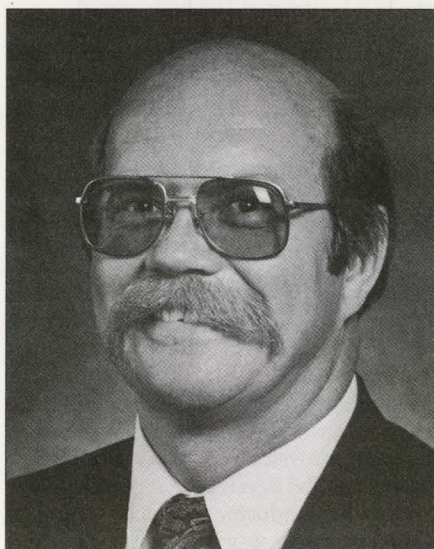
Will teach an undergraduate communications course

Professional Background:

Since July 1995, Vice President of Communications, Time Warner Communications, Rochester; former news anchor, WROC-TV 8, Rochester

Highlights:

Was news anchor with WROC-TV, Rochester, since 1990. During her 15 years as a television news anchor and reporter, also worked with the NBC affiliate in Grand Rapids, Mich., the CBS affiliate in Lansing, Mich., and the PBS affiliate in East Lansing, Mich. Has served as a board member on many community boards, as well as chairing the United Way Pacesetter Campaigns for 1994 and 1995, which raised nearly \$4 million



Motorola Professorship of Microelectronic Engineering College of Engineering

Lynn Fuller

Professorship:

RIT's first Motorola professorship runs from 1994 through 1999. Motorola funds the professorship to cover salary for an additional faculty member, graduate student support and travel by Fuller to Austin, Texas, and Phoenix, Ariz. Only

the second professorship in the nation established by Motorola

Focus:

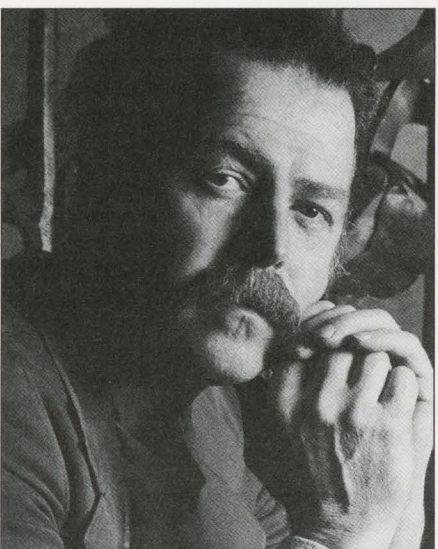
Works closely with Motorola divisions in Austin and Phoenix to bring the latest in semiconductor technology to RIT

Professional Background:

Professor at RIT since 1970; has served as head of the microelectronics engineering department since its inception in 1982. Research interests include silicon integrated circuit manufacturing, semiconductor devices and lithography

Highlights:

In 1991, Semiconductor Research Corporation ranked RIT's program number one in the nation for preparing students for careers in semiconductor manufacturing. Among several honors, received the Institute of Electrical and Electronic Engineering's Region 1 Award for Prolific Contributions in Education and Research in Microelectronic Engineering, the RIT Outstanding Alumni Award, and has published 40 technical papers and holds two patents. Member of the IEEE Electron Device Society, IEEE Education Society and the International Society for Hybrid Microelectronics. Involved in organizing many IEEE conferences; is a senior member of the IEEE



Charlotte Fredericks Mowris Professorship in Contemporary Crafts

School for American Crafts/College of Imaging Arts and Sciences

Albert Paley

Professorship:

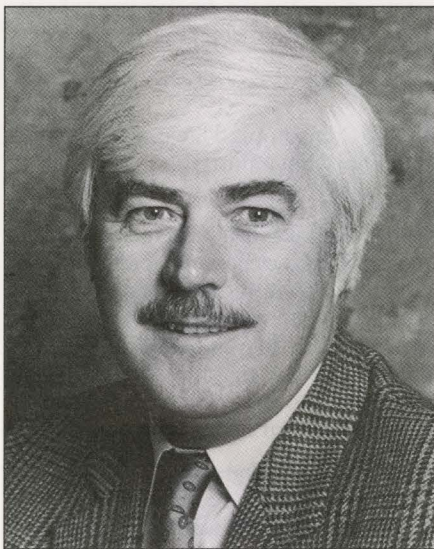
Established 1973 (endowed 1988) to perpetuate interest in School for American Crafts through work of faculty and students as talented craftspeople. Mowris was 1919 home economics graduate of RIT's predecessor, Mechanics Institute

Professional Background:

Metal sculptor and artist-in-residence since 1984; has earned worldwide reputé as artist and public art advocate. Welcomes friends of the art world, students and young artisans to his studio, apprenticing them when possible. Visits RIT studios, advises and joins in conferences and panel discussions

Highlights:

Portal Gates made for the Renwick Gallery, National Museum of Art, Smithsonian Institution, symbolize his stature and contribution to American crafts. The first metal sculptor to receive the Institute Honors Award from the American Institute of Architects, the AIA's highest award to a non-architect. Has completed more than 40 architectural works, including a 60-foot sculpture for the entry court of Bausch and Lomb's new corporate headquarters; *Synergy*, a ceremonial archway in Philadelphia; *Portal Gates* for the New York State Senate chambers in Albany; and *Museum Bench* for the Victoria and Albert Museum, London. His work is in permanent collections and exhibitions including the Metropolitan Museum of Art in New York; *The White House Collection of American Crafts*, National Museum of Art; and the American Craft Museum in New York. Participant at the International Metalworkers Conference in Korea. Inducted into the College of Fellows of the American Craft Council in 1994.



Frederick and Anna B. Wiedman Professorship in Medical Imaging Center for Imaging Science

Arthur E. Burgess

Professorship:

Established 1985 by Rochester attorney Frederick Wiedman Jr. in memory of parents, Frederick and Anna B. Wiedman, to promote excellence in teaching and research in imaging science. The Wiedmans were longtime friends of RIT.

Focus:

Named to professorship 1991. Teaches courses in medical imaging and supervises graduate research students in medical imaging laboratory; also performs research on medical imaging and has written about 65 publications relating to field.

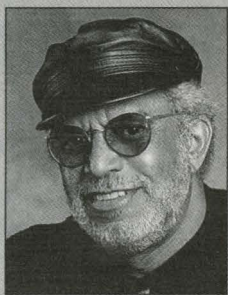
Professional Background:

Came to RIT from University of British Columbia in Vancouver, where he had served on faculty of medicine in the department of radiology since 1973

Highlights:

Is a member of many professional organizations, including Society of Photo-Optical Instrumentation Engineers, Association of Researchers in Vision and Ophthalmology, Canadian Organization of Medical Physicists, and Optical Society of America. Has also performed consulting work for number of firms, including British Columbia Children's Hospital, MacMillan Bloedel Research, and Lunar Radiation Inc.

PROFILES: RIT FOOD PROFESSIONALS



Robert O. Day

Name: Robert O. Day
Title: Manager, Student Alumni Union Cafeteria
Nickname: Bobday (all one word, said quickly)
Favorite books: *The Road Less Traveled* and *All I Really Need to Know I Learned in Kindergarten*
Favorite movie: "My favorite is always the film I saw last, so it would be *Jeffrey*."
What would you like written on your tombstone?: "He did it his way."
Favorite age: "Sixty-one. When one lives in today, the favorite age is today—that's all one has."
If you were stuck on a desert island, whom would you pick to keep you company?: "Now, now. Everyone is entitled to a secret passion!"



Elizabeth Kmiecinski

Name: Elizabeth Kmiecinski, MS, RD
Title: Assistant professor, department of food, hotel and travel management
Hobbies: Family care, tennis, running
Nickname: Liz
Favorite book: *The Man in the Gray Flannel Suit*
Favorite movie: *Four Weddings and a Funeral*
First job: Burger flipper at McDonald's
Proudest achievement: Motherhood
Favorite age and why: "Every year—they're all great"
Favorite Holiday Tradition: Trimming the Christmas tree with personalized ornaments for each member of the family



Steven O'Flynn

Name: Steven O'Flynn
Title: Production coordinator in Ritskeller, Food Service
Hobbies: Golfing, hunting
Nickname: Oscar
Favorite Movie: *Slap Shot*
What would you like written on your tombstone?: "The crazy man lies here."
Proudest achievement: Getting married and having a family
Favorite age and why: 19, being a senior in high school—"party time"
If you were stuck on a desert island, whom would you pick to keep you company?: Demi Moore
Holiday specialty: Roast venison
Favorite holiday tradition: Kissing under the mistletoe



Jacqueline Wittman

Name: Jacqueline Wittman
Title: Line server at Grace Watson Dining Center
Hobbies: Cross-country skiing, white-water canoeing, biking, backpacking and rock climbing
Nickname: Jackie
Favorite Movie: *The Sound of Music*
First or most unusual job: Serving full-course meals on canoes on Canadice Lake
Proudest achievement: ski racing
Your favorite age and why: 20—"Finally, I could do anything I wanted to do."
If you were stuck on a desert island, whom would you pick to keep you company?: Arnold Schwarzenegger
Holiday specialty: Squash casserole
Favorite holiday tradition: Getting together with family and decorating the tree

Student Affairs supports lifelong student success

By Laura Mikols

Achieving the winning edge in life takes more than academic success, says Linda Kuk, vice president for the Student Affairs Division. At the November Board of Trustees meeting, directors of the Student Affairs centers shared how their work supports students' lifelong success outside of the classroom.

Susan Donovan, interim director of the Learning Development Center, describe LDC as a set of academic support services that develop and strengthen learning and teaching skills. "We're not a remedial center," she said. "We certainly support students in academic distress or with special needs, but we also support students who want As instead of Bs." LDC encompasses community service programs, college programs and, as of last July, RIT's Higher Education Opportunity Program and Special Services Program.

Barbara Letvin, director of the Center for Student Transition and Support, shared her mission—giving students from around the world the tools they need to make the rite of passage from home to college to work. The center supports new students, transfer students, women, African Americans, Asian Americans, Hispanics, Native Americans and older nontraditional students.

The Student Health Center's mission, said Cassandra E. Jordan, director, is not only to make students healthy, but also to keep students healthy. The center's programs and services target the whole student—mind, body and spirit. Health education plays an integral role in the center's mission of promoting wise lifestyle choices and good health care practices.

Harry Merryman, director of the Counseling and Career Development Center, leads his staff in offering psychological and career development services to students. The center also consults with and trains faculty and staff on student issues. The center fosters a supportive environment that encourages self-appraisal and personal responsibility.

The English Language Institute, under the direction of Rhona Genzel, teaches English as a foreign language to college-bound international students. ELI recruits students worldwide, negotiating contracts with embassies, international scholarship organizations, multinational corporations and universities overseas.

The Center for Residence Life works to create living conditions that foster student learning and development, said its director, John Weas. The center plans to build a national housing program to position Residence Life "squarely as a partner" in the overall learning process. Weas discussed Residence Life's most pressing challenge: renovating residence halls.

College students spend about 66 percent of their time outside the classroom on average, says Mike D'Arcangelo, acting director of the Center for Campus Life. Campus Life staff work closely outside of the classroom with student leaders as they plan community-building events and cultural programs.

"Life is not a spectator sport," said Fred Bleiler, director of the Center for Physical Education and Recreation. The center encompasses a wellness and activity curriculum, intramurals, recreation, club sports, RIT-FIT health enhancement programs and outdoor experiential programs. Bleiler said the center is doing a better job than ever of emphasizing wellness over a lifetime.

Lou Spiotti, director of the Center for Intercollegiate Athletics, believes in running an athletic program that emphasizes student leadership, teamwork and academic achievement. The center engages the RIT community in its weekly events, builds school spirit and gives RIT visibility in the Rochester community.

Dawn Soufleris, assistant to the vice

president for Judicial Affairs, shared the direction of Judicial Affairs, the Horton Child Care Program and the Center for Campus Ministry. Soufleris's work in Judicial Affairs focuses on fostering a safe campus environment, reinforcing high community standards, holding students accountable for their actions and educating students in responsible behavior in and outside of RIT.

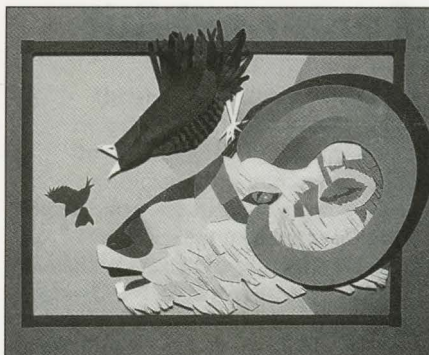
Under the direction of Anne Hoenig, the Horton Child Care Program will relocate to Alexander Graham Bell Hall. In memory of his late wife, Margaret, Al Davis, vice president emeritus, is funding an expansion to RIT's child care operation, allowing the program to accommodate infants and elementary-aged children. Construction will begin in February with a target opening date set for Fall 1996.

"It's the student life outside of the classroom that ties the whole learning experience together," says Kuk. "Student Affairs offers the real-life experiences students need to build leadership and interpersonal skills that place them one step closer to the winning edge."

Calendar features artwork from RIT

New England Book Components' 1996 calendar—distributed nationwide to 1,800 publishers and art directors—boasts artwork by 13 students from the College of Imaging Arts and Sciences, selected from 60 entries. The company, which employs a number of RIT alumni, chose RIT for a fourth consecutive year to supply all the art for its calendar.

Students whose work appears, in order of month: Eileen d'Esterno, Craig Curtis, James Bellinger, Cheryl Kerr, Matt Southard, Nathan Jose Kipe, Meghan Walborn, Pamela Mellen, Peter Vergis, Stephen Harrison, Elise Ryerson, Scott M. Nobles and alternate Gus Moore.



Ram and Crow (an Aesop's fable), by Cheryl Kerr

CCE professor to appear on national TV

He lies on a bed of nails while having cinderblocks broken on his abdomen and forehead by a sledgehammer. He breaks boards with a bare hand. He drives nails into plywood with his hands.

Is Superman on campus? No, just a science instructor trying to make a point to his class about the laws of physics and the basics of biology, only with showmanship and lots of pizzazz. Doug Winton, an adjunct professor in the College of Continuing Education for more than 20

years, is legendary for his comedic teaching style.

Winton, beloved by his students for making science come alive, has also been a favorite of the media—local, national and international—through the years. The nation will get another chance to view his bravery on the Discovery cable channel later this month on the "Beyond 2000" show. There will be three opportunities to see the show: 9 p.m., Fri., Dec. 29, and again at 1 a.m. and 5 p.m., Sat., Dec. 30.

MAAC honors scholars Dec. 7

The Minority Alumni Advisory Committee holds its fourth annual scholarship award presentations from 5:30 to 7 p.m., Thurs., Dec. 7, in Clark meeting room. MAAC will honor eight students chosen for their scholastic aptitude and financial need.

United Way seeking 'poster people'

The RIT/United Way Steering Committee is looking for a few good role models to help promote its 1996 campaign. The committee needs RIT people who received help from or served in a United Way agency to share their story or experience on a campaign poster. If you would like to volunteer, call Cindee Gray, community relations coordinator in the Government Relations Division, at -4987.

IEEE students to host speaker in Carlson

The student branch of IEEE (Institute of Electrical and Electronic Engineering) at RIT will host Analog Devices fellow Paul Brokaw, a recipient of EDN magazine's "Innovator of the Year" award, on campus. Brokaw will present "Bipolar Circuits for Monolithic DACs and ADCs" from 5-7 p.m. on Tues., Dec. 12, in the auditorium of the Carlson Center for Imaging Science. (Refreshments will be available in the lobby starting at 4:30 p.m.)

Brokaw began his career in 1962 as a design engineer constructing instruments for scientific satellites. He joined Analog Devices in 1971, holding several positions leading up to his most recent appointment as fellow. Brokaw holds more than 60 U.S. patents in areas including integrated circuit voltage references, analog to digital converters, digital to analog converters, sensors and amplifiers.

For more information, call Derrick Leach, president of RIT's IEEE student branch, at -5238.

C A L E N D A R

Dec. 8—Fall Open House for prospective students

Dec. 8—sports: men's basketball; Brodie Tournament with Juniata, Potsdam, Pitt-Bradford and RIT; 6 p.m.

Dec. 8—sports: men's hockey vs. Oswego; 7:30 p.m.

Dec. 8—comedy: Selected Hilarity; 8-9:30 p.m., Ingle; \$1

Dec. 9—sports: men's and women's swimming vs. University of Rochester; 1 p.m.

Dec. 9—sports: men's hockey vs. Geneseo; 7:30 p.m.

Dec. 11—sports: men's basketball vs. Oswego; 8 p.m.

Dec. 11—sports: women's basketball vs. Utica; 6 p.m.

Dec. 12—meeting: Student Government Senate; 12:30-2 p.m., 1829 Room, Union

Dec. 12—workshop: "Proposal Writing," by Marjorie Piechowski, DePaul University; sponsored by Office of Sponsored Programs; 1-4:30 p.m., Clark C, Union; reservations required; call 239-6000

Dec. 12—music: acoustic guitar performance by Tim Clark; 5-7 p.m., Shumway; free

Dec. 13—meeting: Policy Council; 3-5 p.m., 1320 Hale-Andrews

Dec. 13—General Club Meeting; 7-8 p.m., Clark meeting rooms, Union

Dec. 13—sports: men's basketball vs. University of Rochester; 7 p.m.

Dec. 14—meeting: Staff Council; 2-4 p.m.

Dec. 14—music: RIT Jazz Ensemble; 8 p.m., Shumway

Dec. 15—sports: men's hockey vs. Mercyhurst; 7:30 p.m.

Dec. 16—music: Bim Skala Bim and Regatta Sixty-Nine; 8 p.m., Union; \$3 w/ID

Dec. 17—First Night of Chanukah Syracuse Shopping Spree at Carousel Center, sponsored by Hillel; bus leaves Hillel House at 9 a.m., returns 9 p.m.; \$5

Dec. 18—Hillel House Interfaith Candle Lighting; 5 p.m.

Dec. 19—meeting: Student Government Senate; 12:30-2 p.m., 1829 Room, Union

Dec. 19—music: acoustic guitar performance by Lisa Bigwood; 5-7 p.m., Shumway

Dec. 19—Pot Luck Dinner at Wolk Center, sponsored by Hillel; 6-9 p.m., Hillel House; bring dish to pass

Dec. 19—Adopt-A-School information session; sponsored by The Order of Omega; 7-8 p.m., Clark B, Union

Dec. 20—music: RIT Timestompers; 7-8:30 p.m., Shumway

Dec. 21—meeting: Staff Council; 2-4 p.m., 1829 Room, Union

Dec. 21—meeting: Hillel House board; 7 p.m., Hillel House

Dec. 21—Hillel House Chanukah Party; bring a grab bag gift (under \$5) to pass; 8 p.m., Hillel House

Jan. 9—meeting: Student Government Senate; 12:30-2 p.m., 1829 Room, Union

Jan. 9—sports: men's hockey vs. Fredonia; 7:30 p.m.

Jan. 10—meeting: Policy Council; 3-5 p.m., 1320 Hale-Andrews

Jan. 10—General Club Meeting; 7-8 p.m., Clark meeting rooms, Union

Jan. 11—meeting: Staff Council; 2-4 p.m., 1829 Room, Union

Academic Senate

continued from page 1

committees of the senate and then discussed and voted upon by the full senate. This decision will then be presented as a recommendation to the provost for action," explained Oliver. In addition, the senate will cooperate with Policy Council in matters of university-wide concern.

The proposed timeline calls for faculty elections and an inaugural meeting of the Academic Senate on Jan. 18.

The vote was received very positively by Dr. Stan McKenzie, provost and vice president for Academic Affairs, who said, "The Academic Senate presents a tremendous opportunity for and challenge to the RIT faculty to assume primary governance responsibility for academic policy."

The charter defines the senate composition as consisting of the university president, elected faculty representatives, the provost, one vice president, two deans, the chair of Staff Council and the president of Student Government. Faculty

representatives will be elected by the college at the ratio of one representative per 30 full-time faculty.

The charter also specifies 10 standing committees: Nominations, Academic Affairs, Long-Range Planning, Resource Allocation and Budget, Faculty Affairs, Student Affairs, Campus Environment, Academic Support, Intercollege Curriculum and Graduate Council.

The only dissenting votes in Policy Council came from students who voted as a bloc against the proposal. Student Government President Rhoshawndra Carnes explained that their opposition was not with the concept, but the language of the proposal. "The current document calls for one student representative and while we have raised this issue, we felt that Faculty Council ignored our concerns," said Carnes.

Oliver addressed the issue on the floor of Policy Council, explaining that one of the very first issues to be addressed by the senate will be expanding student involvement.

RIT alum opens City Center exhibit

The exhibit "Past-Modern Paintings/New Work" by prominent painter and RIT alumnus Paul Garland has opened at City Center's Main Gallery, 50 West Main St. Sponsored by the department of fine art in the School of Art and Design, the show runs through Jan. 6; it is open weekdays, 9 a.m. to 9 p.m., and Saturdays, 9 a.m. to 4 p.m.

"Mr. Garland creates beautiful and intense forms of rich color layers and dynamic juxtapositions of shape and

movement," says Lawrence (Judd) Williams, painter and RIT professor. Garland works his large paintings in acrylics, watercolor or oil, exploring inventive, revealing textural surface applications that represent the selective nuances of a mature artist, says Williams.

Garland, a professor at SUNY Oswego, will give a slide presentation at 2:30 p.m., Wed., Dec. 13, in the Carlson Center for Imaging Science auditorium.

photography and collaborated in several photography books.

"Bill was one of the earliest members of the SPAS faculty," says colleague Charles Arnold, professor emeritus. "He was a wonderful colleague and very well loved by faculty and students alike. Practically every living faculty member that ever worked with him was at his memorial service," he said. The service was held at the First Congregational Church in Canandaigua Nov. 9.

William Soule Shoemaker, past director of the School of Photographic Arts and Sciences and professor emeritus, died Oct. 31 at the Island Nursing Home in Deer Isle, Maine. A Canandaigua native, Shoemaker graduated from RIT with a photography degree in 1942.

At RIT he earned national repute in photographic systems evaluation and design and in photographic chemistry. He consulted for the U.S. Air Force and for firms specializing in underwater

D E A T H S

Environmental biologist scheduled as Gannett lecturer

The 1995-96 Caroline Werner Gannett Lecture Series for Senior Seminar in the Liberal Arts continues into Winter Quarter with David Orr presenting "Earth in Mind" at 7:30 p.m., Thurs., Jan. 11, in Webb Auditorium in the Booth Building.

Orr, an environmental biologist, has emerged as a leading voice in environmental studies worldwide, says Gannett Distinguished Professor James Buchanan. He has written or edited many books,

including *Ecological Literacy*, *The Global Predicament*, *Environmental Public Policy* and *Earth in Mind*. Co-founder of the Meadowcreek Project, Orr educates on the environment as professor and director of the new Center for Environmental Studies at Oberlin College.

The free lecture, sign interpreted, handicapped accessible and open to the public, will be followed by a reception outside the auditorium.

December film series examines 'Degrees of Guilt'; Carlson auditorium

The film/video department's Visiting Artists and Lecturers/Screening Series presents three movies in the Carlson Center for Imaging Science auditorium for December's theme—"Degrees of Guilt." The films involve "the unjustly accused, the questionably guilty and the unquestionably crooked," says the program flyer.

At 2 p.m., Sun., Dec. 10, a double feature will provoke and entertain: *Unknown Secrets*, about accused spies Julius and Ethel Rosenberg, told through archival

footage (1990; 30 min.), and *The Thin Blue Line*, about the case of Randall Adams, wrongly sentenced and jailed for murdering a Texas police officer (1988; 100 min.). The documentary film so thoroughly proved Adams' innocence that the courts turned him free.

Orson Welles' *The Trial*, shown at 2 p.m., Sun., Dec. 17, presents "a stark, theatrical work" starring Anthony Perkins, Welles and Jeanne Moreau in this adaptation of Franz Kafka's classic novel (1963; 119 min.).

Memorial honors Kathleen Keyes

To honor Kathleen M. Keyes' work as operations manager in Student Government and her dedication to RIT from 1983-1994, SG students and alumni created a memorial and are establishing a scholarship in her name. SG invites the RIT community to the Kathleen M. Keyes Memorial dedication, from noon to 2:30 p.m. on Tues., Dec. 19, in the Student Alumni Union lobby.

SG students designed the scholarship to help students who need financial assistance and exhibit the qualities they

cherished in Keyes—dedication, open-mindedness, friendliness and a willingness to help others. The Kathleen M. Keyes Memorial Scholarship will help students balance their financial, scholastic and leadership responsibilities and will encourage student growth and leadership development in the RIT community.

SG hopes to raise \$25,000 for the endowment fund. If you would like to contribute, call Susan Buffington in the Development Office at -4930.

News & Events is produced biweekly by RIT Communications; Jack F. Smith, vice president. Please send comments to *News & Events*, Communications, Eastman Building. **Editor:** Sarah Breithaupt **Copy Editor:** Trudi Marrapodi **Designer:** Dona Haag **Contributing writers:** Roger Dykes, Neil Fagenbaum, Laurie Maynard, Bill McKee, Laura J. Mikols, Brad Rye, Bonnie Travaglini, Diane Zielinski, NTID Marketing and Communications **Typographer:** Sarah Southgate

Rochester Institute of Technology
One Lomb Memorial Drive
Rochester, NY 14623-5603

R.I.T.

news
events