

# NEWS & EVENTS

Rochester Institute of Technology

Vol. 14, No. 30, October 14, 1982



## Campus Welcomes Alumni And Parents to Big Weekend

Response has been overwhelming to this year's exciting Homecoming/Parents Weekend Program. Advanced reservations indicate a large turnout.

The campus will be humming as parents share in the "RIT Experience" and alumni reminisce and renew acquaintances.

Some of the major highlights of the weekend include:

### Friday, October 15

Alumni Awards Ceremony and Reception, 4 p.m. Ingle Auditorium, College-Alumni Union

Sports Hall of Fame Induction Ceremony and Dinner, 6:30 p.m., The Party House on Beahan Road

### Saturday, October 16

Three-Mile Run for prizes, 7:30 a.m., main track

Recognition Brunch with Dr. M. Richard Rose, 10:30 a.m., College Alumni-Union Cafeteria

Big Homecoming Parade by student groups, 1 p.m., RIT campus

Varsity Sports: Women's Volleyball, Men's Soccer and Cross Country, afternoon

RIT Philharmonia Pops Concert, 4:30 p.m., College-Alumni Cafeteria

NTID Theatre, "A Homecoming Celebration - Tonight at Cinema 4," 8 p.m.

Eddie Money Concert, 9 p.m., George H. Clark Memorial Gymnasium

Many of the events have been sold-out, so pick up a registration form today in the College-Alumni Union or Administration Building (information desks), or call 475-2601 or 262-3071 for further information.

## Institute Forum: Saying 'No' to Your Computer

Although computers are "universal" machines and are capable of doing "anything," there are certain tasks which computers *ought* not be made to do.

This is the view of Joseph Weizenbaum, professor of computer science at Massachusetts Institute of Technology and Institute Forum speaker at 7 p.m., Thursday, Oct. 21, in Ingle Auditorium.

Weizenbaum will examine the impact of the computer on man in his talk, "The Mind Machine: Computers and Intelligence," which follows the forum's theme, "Technology and Values." The public is invited. Tickets are \$1 and are available at the Candy Counter, College-Alumni Union.

In his book, *Computer Power and Human Reason*, Weizenbaum tells of his shock at reactions to a computer pro-

gram he wrote to illustrate the information-processing power of the computer. The program, ELIZA (from George Bernard Shaw's language-learning character in *Pygmalion*), was written to illustrate language communication between man and machine. The program was constructed in two-tiers consisting of a language analyzer and script. The script enabled ELIZA to parody the role of a Rogerian psychotherapist in conversation with a young woman.

Weizenbaum chose the Rogerian psychotherapist because "he is relatively easy to imitate since much of his technique consists of drawing his patient out by reflecting the patient's statements back to him."

The program became known as DOCTOR and Weizenbaum's shock at its reception was due to these

discoveries: practicing psychotherapists believed the computer program could grow into a nearly completely automatic form of psychotherapy; people quickly became emotionally involved with the computer believing it was thinking; and there was a widespread belief that the ELIZA program demonstrated a general solution to the problem of computer understanding of natural language versus symbols when it was Weizenbaum's intention to say that language is understood only in contextual frameworks and there is no general solution.

Weizenbaum received his bachelor and master of science degrees from Wayne State University. He has been at Massachusetts Institute of Technology since 1970 and, at the same time, has

*Continued on page 8*

# Kazmierski Named to Joint Division Post

Dr. Paul R. Kazmierski, assistant vice president for Learning Development Services at RIT, has been named assistant vice president for Student Academic Development, a joint appointment by the divisions of Academic Affairs and Student Affairs.

In announcing the appointment, Dr. Robert G. Quinn, vice president for Academic Affairs, and Dr. Fred W. Smith, vice president for Student Affairs, said Kazmierski will assume leadership in programs related to the educational goals of the Institute, student retention, and certain aspects of career and cooperative education. Both Quinn and Smith added that Kazmierski will maintain his responsibilities with the academic and community support programs of the Learning Development Center.

In assuming the position, Kazmierski said, "My goals include establishing programs to assist students in having a clearer 'sense of self' within the structure of higher education, in finding programs to challenge their potential, and in setting firm objectives to achieve their educational, career, and life goals."

"The Institute, as it faces the latter half of the 1980s as well as the 1990s, is well aware that in order to maintain its unique place in the academic community, it must deal with a number of student development issues beyond curricula," stated Quinn. "While the professional programs at RIT have clear career emphasis, and entry level job placements after graduation have been extraordinarily high, the promotional potential of our graduates is not clearly documented. Elements of our career education need review, restructure, and/or verification. Cooperative education, academic advising, job development and a number of student skills should be strengthened if the appeal of RIT's educational program is to be maintained and enhanced."

According to Smith, "Bridging the gap between academic and student life could certainly be fostered by this new position."

A joint appointment, while not something new in academic circles, is unique at the divisional level.

Kazmierski joined the Learning Development Center as its director in 1969 and was named assistant vice president in Student Affairs in 1980.



**PAUL KAZMIERSKI**

## Hayes Named Assistant to V.P.



**ANN M. HAYES**

Ann M. Hayes, director of Orientation and Special Programs at RIT, has been named assistant to Dr. Robert G. Quinn, vice president for Academic Affairs.

Hayes' principal duties will be in developing and coordinating the activities of RIT's advisory boards, of which there are 300 members. She also will be involved in other responsibilities relating to the function of Academic Affairs.

Quinn said, "Our intention is to greatly expand and coordinate the activities of the boards because they are very critical to our future development, and I'm expecting Ann to assist me directly in this process." Quinn went on to say, "Advisory boards are important to RIT because they offer advice on keeping curriculum current, assist in co-op and senior placement, and have a history of being responsible for bringing major gifts to the Institute."

Hayes has worked for Student Affairs since 1971 in the capacity of assistant to the vice president for Student Affairs, coordinator for off-campus students, and director of orientation and special programs. In the latter capacity, she initiated many new programs, which, Dr. Fred W. Smith, vice president for Student Affairs, feels, "have elevated the orientation process at RIT to one of the best programs in the country." Smith

*Continued on page 8*

# POLICY & INFORMATION

**Administrative Committee** A decision has been made to undertake an activity to assure the validity of the data on which academic programming is predicated. If not already in existence, each college will form an advisory group to assist in forward academic planning. A trustee committee on strategic planning has completed its initial work and report and can be mobilized to give further assistance. A contract is planned with the Institute for the Future for research assistance; one of the college advisory boards will be selected as a prototype.

## Faculty Council Meeting 10/7/82

- 1) Faculty Council assessment will continue at \$10.
- 2) William Nowlin will be 1982-83 coordinator for the Eisenhower Outstanding Teacher Awards.
- 3) Faculty Council Library Committee is exploring needs of departments and schools in relation to what is in the Eisenhower Library.
- 4) Two by-law amendments will be voted on Nov. 4th. The first grants representation to Eisenhower faculty for 1982-83; the second will provide opportunity for representation on Faculty Council from temporary full-time faculty.

The Controller's Office has released the following statement of revenues and expenditures for the year ending June 30, 1982, with comparable figures at June 30, 1981. The 1981-82 year marks the 11th consecutive year that the Institute has operated in the black.

Anyone wishing source or additional information, please call 2527.

## RIT Enrollment Announced

Figures just released from the Registrar's Office show RIT with a total fall enrollment of 15,965. Of that number 10,798 are enrolled as day college students, with 9,330 in undergraduate programs and 1468 matriculating as graduate students.

The Institute's enrollment has increased 1.6 percent for RIT's day colleges. Freshmen enrollment is 2637.

	1980-81		1981-82	
	Amount	Percent	Amount	Percent
	In Thousands		In Thousands	
<b>Revenues</b>				
Educational and General				
Tuition and Fees	\$ 38,256	37.34	\$ 45,546	38.64
Government Appropriations	2,423	2.36	2,437	2.06
Endowment Earnings	3,130	3.06	43,603	3.06
Unrestricted Gifts	1,420	1.39	1,505	1.28
Research and Other Sponsored Projects	2,896	2.83	3,857	3.27
Campaign Gifts for Endowments	382	.37		
Other Sponsored Programs	21,833	21.31	25,129	21.32
Other Sources	7,008	6.84	8,690	7.37
Total Educational and General	\$ 77,348	75.50	\$ 90,767	77.00
Student Aid	5,764	5.63	5,628	4.78
Student Government	678	.66	831	.70
Auxiliary Enterprises	18,654	18.21	20,647	17.52
Total Revenues	\$102,444	100.00	\$117,873	100.00
<b>Expenditures</b>				
Educational and General				
Instruction & Department Research	\$ 24,562	24.48	\$ 28,969	24.77
Research and Other Sponsored Projects	3,243	3.23	4,381	3.75
Other Sponsored Programs	21,833	21.76	25,129	21.49
Library and Instructional Resources	2,662	2.65	2,790	2.39
Career Education	673	.67	399	.34
Student Services	3,130	3.12	3,872	3.31
Operations and Maintenance of Physical Plant	4,927	4.91	6,177	5.28
General Administration	501	.50	486	.42
General Institute Expenses	10,307	10.27	13,241	11.32
Debt Service-Educational Plant	2,265	2.26	2,095	1.79
Total Educational and General	\$ 74,103	73.85	\$ 87,539	74.86
Student Aid	7,408	7.38	7,560	6.46
Student Government	678	.68	831	.71
Auxiliary Enterprises	18,151	18.09	21,008	17.97
Total Expenditures	\$100,340	100.00	\$116,938	100.00
<b>Campaign-Related &amp; Other Transfers to Quasi Endowment</b>				
Transfer to Plant Fund	1,700		910	
Total Expenditures and Transfers	\$102,422		\$117,848	
Excess of Revenues over Expenditures and Transfers	\$ 22		\$ 25	

## Tyler Named To New Post

College of Business faculty member Dr. Philip R. Tyler has been named director of the Center for Management Development, formerly the Center for Management Study.

Tyler, an associate professor of marketing, has taught at RIT since 1970 with stints during that time as a marketing consultant for Inter-Continental Hotels in Indonesia and as product manager, condiments, for R.T. French Co.

According to College of Business Dean Walter McCanna, who announced the appointment, Tyler will be responsible for developing corporate educational programs and seminars and for continuing the RIT/EX executive management program.

A 1965 graduate of RIT's College of Business, Tyler completed his MBA and DBA at Michigan State University.

## Student Receives National Award

Third-year Food, Hotel and Tourism student Tara Lesco has been awarded the 1982 Arthur J. Packard Memorial Scholarship by the American Hotel Foundation. The national scholarship is awarded yearly to one student in the country. According to George Alley, director of RIT's School of Food, Hotel and Tourism Management, the award is based on academic excellence and the demonstrated potential for success in the food, hotel and tourism field.

The American Hotel Foundation is an affiliate of the American Hotel and Motel Association (AH&MA) and administers the award annually.

Lesco, who plans to graduate in May 1983, has been named to the Dean's List twice. She has served as secretary and vice president of the student chapter of the Hotel Sales Management Association.

Lesco will be the guest of the AH&MA at its national convention this week in Vancouver, British Columbia, where she will be presented the award. She also will be honored at a luncheon in New York Nov. 8 at the International Hotel, Motel and Restaurant Show.

## INFORMATION SYSTEMS AND COMPUTING (ISC) SEMINARS FOR IBM/370 AND VAX/VMS USERS

Seminar	Bldg./Room	Date	Time
Introduction to CMS (Conversational Monitor System) (IBM/370 System)		10/19	
		10/21	
		10/26	
		10/28	
		11/02	
Using PL/I on the VAX/VMS System	12-1494	10/20	8:00 A.M.-10:00 A.M.
Introduction to Time Sharing on VAX/VMS	12-1494	10/20	10:00 A.M.-12:00 NOON
		10/27	8:00 A.M.-10:00 A.M.
Introduction to VAX/VMS GIGI	12-1428	10/20	11:00 A.M.- 1:00 P.M.
		10/27	11:00 A.M.- 1:00 P.M.
Using BASIC on the VAX/VMS System	12-1494	10/20	3:00 P.M.- 5:00 P.M.
Using COBOL on the VAX/VMS System	12-1428	10/20	3:00 P.M.- 5:00 P.M.
Introduction to the Use of Statistical Processors on the VAX/VMS System	12-1494	10/27	10:00 AM.-12:00 NOON
Using FORTRAN on the VAX/VMS System	12-1428	10/27	3:00 P.M.- 5:00 P.M.
Using PASCAL on the VAX/VMS System	12-1494	10/27	3:00 P.M.- 5:00 P.M.
Introduction to SAS (Statistical Analysis System) (IBM/370 System)		11/04	
		11/09	
		11/11	
		11/16	
		11/18	
		11/23	

For information about the IBM/370 seminars, call User Services, 6669.

To register for the VAX/VMS seminars, call Academic Computing, 2810, or stop at the Lewis P. Ross Building (#10), Room A-291. Please register early; space is limited.

## Season Debut for Philharmonia

RIT Philharmonia, the Institute's college/community orchestra, will perform its first concert of the season Saturday during "Together '82," Homecoming/Parents Weekend.

Ascher Temkin, Philharmonia music director and conductor, will conduct the orchestra at 4:30 p.m. Saturday in the College-alumni Union Cafeteria. The program will be Schubert's "Unfinished Symphony" and the "L'Arlesienne" Suite No. 2 by Bizet.

The Philharmonia's 50 members are RIT faculty, staff and students and other musicians from the Rochester area. Temkin, also professor of music and coordinator of music for RIT's College of General Studies, would like the Philharmonia to have more strings and bassoonists. Musicians interested in joining the group should attend rehearsals Monday evenings from 8 to 10:15 p.m. in Ingle Auditorium.

## Donation for Blind Readers Converts Print to Speech

Visually impaired and blind faculty and students of RIT will benefit from a reading machine donated by Kurzweil Computer Products, a subsidiary of Xerox Corporation. The machine enables the blind to "read" by converting printed material into full-word synthetic English speech.

When the Kurzweil Reading Machine (KRM) is installed in Wallace Memorial Library in early 1983, it will be only the second reading system in use in a five-county area. The other is located at Rundel Library in downtown Rochester. Kurzweil also will train two RIT employees, one from the library and the other from the Special Services Program of the Learning Development Center, in use of the system at their Cambridge, Mass., facilities.

RIT was in the process of seeking funds to purchase the reading equipment when vice president and secretary of Xerox and an RIT trustee, E. Kent Damon, informed the Institute that Xerox intended to donate 100 machines to colleges and universities throughout the United States. Virtually all institutions of higher learning in the country were invited to apply.

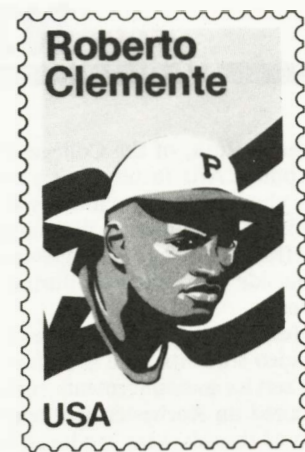
The KRM is an Optical Character Recognition (OCR) system that scans

and recognizes printed characters and has the ability to read virtually any type face in any text. The printed text is transmitted to the user via an electronic voice.

Professor Norman R. Coombs, science and humanities professor in the College of General Studies, commented, "I've been using the reading machine at Rundel Library for a year . . . I have immediate access to any printed book in the library and have greatly increased the amount of my reading. I'm looking forward to the availability of the new machine here at RIT. It will help not only the visually impaired, but also some learning disabled persons."

### HARRY S. TRUMAN SCHOLARSHIPS

**Faculty, if you know an outstanding sophomore considering a career in public service, contact Don Hoppe, 2527, before Oct. 18. It is just possible that student may win a \$20,000 scholarship—\$5,000 for each of two years of undergraduate and two years of graduate study.**



## Alumnus' Designs Clemente Stamp

Juan Lopez Bonilla, a 1979 graduate of the College of Fine and Applied Arts, designed the Roberto Clemente commemorative stamp shown above for the U.S. Postal Service. His design was unveiled during a special ceremony in Yankee Stadium on Sept. 11 prior to the evening ball game. Bonilla, like Clemente, is a native of Puerto Rico. He studied in the MFA program at Yale following his graduation from RIT and is now a senior designer at Corning Design. The Postal Service plans to issue the stamp in 1984.



*When retired RIT professor Clarence E. Tuites (second from right) visited campus recently he got together with (from left) Donald Thomas '32, a former Tuites student; Dr. Mark Ellingson, president emeritus of RIT; and William Metherell, '32, also a former Tuites student. In 1965, Tuites received the Institute's first Outstanding Teaching Award. He was with the Electrical Department (forerunner of electrical engineering) at RIT and retired after 39 years of service. He was the author of two editions of Basic Mathematics for Technical Courses and also wrote several manuals.*

## Jones Continues To Underwrite MacNeil/Lehrer

Viewers of Tuesday's "MacNeil/Lehrer Report" on WXXI-TV, channel 21, will continue to hear the following—"Local broadcast of this program has been made possible by Jones Chemicals, Caledonia, N.Y., on behalf of Rochester Institute of Technology, offering career programs for this nation's industrial future."

John Wiley Jones, company founder and chairman of the board of Jones Chemicals, Inc., and an honorary RIT trustee, is continuing to underwrite the popular Public Broadcasting System program until April 1, 1983.

According to Jones, "The association with the 'MacNeil/Lehrer Report' has been a very positive one for RIT."



# NEWS & NEWSMAKERS

**Suzanne Roth**, of the College of Fine and Applied Arts faculty, has a one-person show of recent paintings at the Olin Fine Arts Center of Washington and Jefferson College in Washington, Pa., outside of Pittsburgh, during October.

**Professor Erik Timmerman** and his film/video students have produced three public service announcements currently being aired on Rochester area television.

Two of the ads were produced by recent graduates Richard Nichols and Richard Currie. The clients were Literacy Volunteers and the Rochester Humane Society.

Timmerman produced the third spot, which recruits new members for RIT's Philharmonia Orchestra and features conductor Ascher Temkin.

**Professors Heinz Klinton and Roger Remington**, Department of Graphic Design, represented RIT at the recent "Viewpoints" Conference of the Alliance Graphique Internationale held at York University in Toronto.

**Lois Goodman**, head of public services at Wallace Memorial Library, recently addressed the Association of College and Research Libraries, Western New York and Ontario Chapter, in Toronto on public relations efforts in introducing online catalogs to academic library users.

**Nile Root**, associate professor in the biomedical photographic communications program, currently has an exhibit

of his recent personal creative photography in the Photography Gallery (formerly the MFA Gallery), building 7 on the third floor.

The large black and white images are a juxtaposition of photographs made in the eastern United States with photographs made in Arizona, New Mexico and Colorado. The exhibit is titled "East-West" and is open to the public through Oct. 14.

**Walter Campbell**, professor and former acting director of the School of Printing, has been honored with a Distinguished Service Award from the National Association of Printers and Lithographers (NAPL). He was one of 12 persons in the graphic arts who received awards at the NAPL's annual luncheon meeting during Graph Expo in Philadelphia last week.

**Professor Wu Ji-Zong**, chairman of the Precision Instruments Engineering Department at Tianjin University, Tianjin, P.R.C., **Richard N. Norman**, technical associate, School of Photographic Arts and Sciences, and **Professor John F. Carson**, Department of Electrical Engineering, published a paper in the July 1982 issue of the SMPTE Journal based on research done while Professor Wu was a visiting scholar at RIT last year. Titled "A Simple Instrument for Measuring Image Steadiness in 16-mm Motion-Picture Cameras," the paper presents the design, construction and testing of a

small device easily attached to motion picture cameras to replace large test fixtures previously necessary to hold the camera and test targets steady while the targets were photographed. The project used the talents of the participants in instrument design and construction, optics and imaging science.

The annual Food Advisory Board (FAB) transitional dinner meeting was held recently at Truffles Restaurant. Retiring board members **Sandy Milton** and **Jennifer Buckley** of the Ritskeller, **Janice Unamann** and **Paul Smarsh** of Grace Watson Dining Hall, and **Dennis Tieppo** of Hettie L. Shumway Dining Commons, under the management of Janet Lee, Grace Watson manager, were recognized for outstanding service during the past year.

Incoming board members are **Amelia Caruso** (carry-over member), **Rickie Hodge** and **Kathleen Zimmer**, Dining Commons; **Barbara VanVolkenberg** and **Oscar O'Flynn**, Dining Hall; **Sandy Vitone**, College-Alumni Union Cafeteria; and **Charlie Becker**, Ritskeller, under the new leadership of Robert O. Day, dining commons manager.

The FAB provides a means for employee input into matters that affect all Food Service employees. The board's recommendations are passed on to management.

## NYS Assembly Internships For Students

Full-time spring semester internships in the New York State Assembly are now available for RIT junior, senior and graduate students, regardless of major. Students will have an active learning experience in state government, by working with assembly members, and being directly involved in the legislative process.

The internships begin in January with a week of orientation to state government. Interns also will attend classes and discussion groups at the capitol throughout their semester.

Most colleges award a semester of credit for participating in this unique work-learning program.

*Continued on page 8*



*Electronic Navigation Industries, Inc. (ENI) of Rochester, has provided the College of Science with an ultrasonic and sonar power amplifier for use in the ultrasonics physics course. Pictured with the amplifier (from left to right), are Leon M. Salmen, vice president for sales at ENI; Dr. John Paliouras, dean of the College of Science; and Melvin H. Damon, president of ENI.*

# PROFILE

## Program Consultant: A Risky Business And He Wouldn't Have It Any Other Way

It was the first day of a three-day workshop for 50 nurses at the old Bellevue-Stratford Hotel (later headlined for its Legionnaire's Disease) in downtown Philadelphia.

A speaker was in the process of getting things underway, making some announcements prior to turning the program over to his colleague, a woman on staff, who conducted all of Penn State's nursing programs in Pennsylvania.

In doing so, the speaker failed to notice a strip of board on the floor behind him. Inadvertently, the depressed staging area behind the board also went unnoticed.

When the speaker introduced his colleague, she bounded on stage, greeted her audience and then it happened . . . disaster! With one step backward, his colleague virtually disappeared from view.

Fortunately, she was not injured, and after things calmed down a bit, the workshop proceeded successfully.

The unfortunate speaker on this occasion was Bob Way, program consultant with the Office of External Program Development in the College of Continuing Education (CCE). Last March Way completed 15 years with RIT and he estimates that in that time he has administered more than 300 workshops, seminars and in-plant training programs. Prior to joining RIT, he was involved in 100 programs over a five-year period with Penn State University.

"Running a program is a little bit like being in show business," comments Way. "You're never quite sure what is going to happen when the curtain goes up. You work months in advance, planning, staffing, budgeting, getting your promotional materials together, preparing mailings, making all logistical arrangements, meals, and audio-visuals and then finally, the big day arrives.

"One poor speaker, missed plane, equipment malfunction, bad meal, snowstorm or whatever and suddenly the success of your program is in jeopardy. You learn to roll with the punches and most important, you learn to adjust . . . to remain flexible," Way continues.

Through the years, Way has worked with a number of celebrities such as Bishop Fulton J. Sheen, Jack Anderson, William Rusher, Stewart Udall, Eugene



**BOB WAY**

McCarthy as well as civic and industrial leaders including Frances Drake, Donald Gaudion, David Kearns and a number of outstanding speakers from college and university faculties across the country. "I've been extremely fortunate to have had the opportunity to work with so many very talented people," Way notes.

"One of these very talented people," Way explains, "is Dr. Edward B. Stockham, director of Allied Health Ac-

tivities for RIT." Since 1974 Way and Dr. Stockham have organized 50 seminars and workshops for allied health groups in the Greater Rochester area; groups that include professional organizations of medical technicians, radiologists, ophthalmologists, dietitians, nursing home administrators, nurses, physical therapists and others. "Ed is primarily the 'content' man, working closely with advisory committees that decide what topics and speakers will be included in the program," Way says. "Once he's completed these details, Ed turns the program over to me for the handling of all necessary administrative details."

In addition to his administrative duties, Way has appeared as a guest speaker on a number of programs for Rochester area organizations and is an adjunct faculty member of the training staff of the Manufacturing Division of Xerox Corporation.

In his 15 years with RIT, Way has witnessed a great deal of change. "With our many specialists, RIT has become very influential and we're making a name for ourselves, nationally and internationally. We've come a long way . . ." he observes.

Way and his wife, Pat, were raised in Niagara Falls. His undergraduate degree in English literature was completed at Syracuse University and his master's degree was earned at RIT in instructional technology. Pat Way worked in the RIT Bookstore for 10 years and is credited with establishing the trade book department which has grown steadily in volume over the years.

## Super Season for RIT Sports

RIT fall sports are off to an impressive start this season.

Coach Doug May's men's soccer team was 9-1-1 after last weekend and ranked 12th in the nation. Helen Smith's volleyball team won its first eight matches and was 8-2 following weekend play. The women's tennis team, under direction of Ann Nealon, was 8-0 with 21 consecutive dual match wins extending

over three seasons. The cross country team was 8-1 with eight straight shutouts following a season opening loss to St. Lawrence. Coach Peter Todd's harriers recorded the Institute's 200th victory with shutouts over Houghton and St. Bonaventure last week. Women's soccer, in its first varsity season, is coming off a

*Continued on page 8*



## Hayes

*Continued from page 2*

adds, "I have mixed emotions concerning Ann's promotion. Although I'm very happy for her, she will be missed by the division."

In addition to her duties as director, Hayes has served two RIT presidents in the capacity of special student affairs consultant, providing assistance on a wide variety of programs and services.

## Super Season

*Continued from page 7*

big win over Keuka (11-2) last Saturday. Coach Paul Carcaci's squad was 2-5-1.

There are plenty of sports activities for Homecoming/Parents Weekend. The Department of Intercollegiate Athletics will unveil its Tiger Mascot Friday afternoon. Saturday's action, all at home, features: women's tennis vs. St. Bonaventure, 11 a.m.; women's volleyball vs Roberts Wesleyan and Houghton, 1 p.m.; men's soccer vs. St. John Fisher, 2:30 p.m.; and cross country vs. Niagara at 2:45 p.m.

In addition to the sports events, Tiger Fever buttons will be distributed throughout the weekend.

## Internships

*Continued from page 6*

Applications and supporting materials must be submitted *before* Nov. 1 to Douglas Ford, c/o the office of the vice president of Academic Affairs, room 7000, George Eastman Memorial Building.



*Machele Muller, recipient of a Society of American Military Engineers Scholarship Award, accepts congratulations from Dr. Swaminathan Madhu (right), associate dean for graduate studies, College of Engineering, and Lt. Col. Richard K. Reinholtz (left), professor of military science at RIT. Muller, a second-year mechanical engineering major, was selected for the award by demonstrating, through her scholastic performance, a potential for further practice in engineering study.*

## LOMB LUNCHEONS

**Tues., Oct. 19** CLOSED

**Thurs., Oct. 21**

Chicken Parmesan with Linguini, Fried Zucchini, Garlic Bread OR Minestrone Soup, Turkey Club; Nougat Cake

**Tues., Oct. 26**

Scalloped Chicken and Rice with Mushroom, Broccoli a la Hollandaise OR Cream of Chicken Soup, Assorted Crackers, Bacon and Tomato Sandwich; Chocolate Roll

**Thurs., Oct. 28**

Nachos with Guacamole Dip, Cheese and Meat Enchilada with Spanish Rice OR Open-Face Mexican Chicken Salad on Rye with Coleslaw and Pickles; Blueberry Dessert Burrito

Lomb Luncheons are presented by students in the School of Food, Hotel and Tourism Management in the Henry Lomb Room, 4th floor, Administration Bldg. Diners are seated at noon. Reservations can be made by calling 2351; the cost is \$2.95.

## Computer

*Continued from page 1*

been editor of the *International Journal of Man-Machine Studies*.

A fellow of the American Association for the Advancement of Science and of the Association of Computer Machines, Weizenbaum is a specialist in artificial intelligence, natural language understanding by computer, social implications of computers and cybernetics, and the structure of computer language.