

# NEWS & EVENTS

Rochester Institute of Technology

Vol. 13, No. 14, April 9, 1981

## CCE Management Program Graduates 240

President M. Richard Rose presided at the Institute's 55th Annual Management Convocation, which was held in the Large Banquet Hall of the Rochester Chamber of Commerce last Thursday evening, April 2.

Rose congratulated the 240 graduates of the 1980-81 RIT management process certificate program, a 12-month curriculum offered by the College of Continuing Education to those seeking entry into or advancement in management level positions. The event drew nearly 400 guests, including several hundred area executives representing the companies who participate in the program and many relatives and guests of the graduates.

In his welcoming remarks, Rose praised the achievements of the management process students and noted that they not only held full-time positions while enrolled in the course but "most also held the most important roles in their lives—those of spouse and parent."

After the official presentation of the class by CCE Dean Robert Clark, the graduates heard a brief address by John D. Hostutler, president, Industrial Management Council. Hostutler, who has attended this event for the past 10 years, commented that "this is never the typical graduating class; the age is a little higher and the commitment is greater. These are people who recognize that they are going to have to learn to manage if they are going to advance." He also noted that this year's class included several who hold advanced degrees, including one M.D.

A highlight of the evening was RIT Board of Trustees member Hugh Cumming's presentation of the distinguished



Before entering the banquet hall: (from left) Thomas Hawks, honorary chairman of the board, Rochester Savings Bank; Leonard Simon, chairman, Rochester-Monroe County Chapter, American Red Cross, and vice president, Community Savings Bank; Dr. Rose; Dean Robert Clark; John McDivitt, executive director, Rochester-Monroe County Chapter, American Red Cross; and Frederick G. Ray, president, Rochester Savings Bank.



Frederick G. Ray (left), president, Rochester Savings Bank, and RIT Board of Trustees member Hugh Cumming

### DON'T BE BASHFUL

What makes a great speaker and what can I do to become one? Join the Public Speaking Workshop and discover the answer while enhancing your professional development. This workshop will be offered through the Personnel Department's Training and Development Office in conjunction with Dr. Marty Young, Learning Development Center, on Wednesdays from 4:30 to 6. The workshop will start April 15 and run for five consecutive weeks.

For further information, please call Leslie Berkowitz or Joan Cavanna at 6124.

Continued on p. 8



## Daum Named Administrative Consultant

Warren Daum, recently retired executive director of the Gravure Technical Association, has been appointed to the newly created position of administrative consultant to the dean of the College of Graphic Arts and Photography.

Daum will work in cooperation with Dr. Lothar K. Engelmann, dean of the college, and Dr. Mark Guldin, director of RIT's School of Printing—planning programs and curricula and strengthening RIT's ties with the graphic arts industry—and with trade organizations. He will continue to serve as president of the Gravure Education Foundation, as trustee of the National Scholarship Trust Fund and as vice president of the Graphic Arts Association Executives.

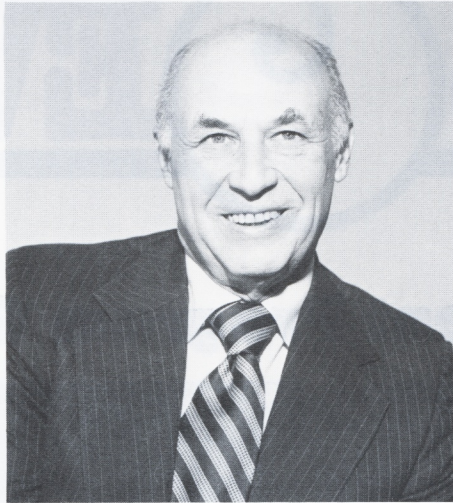
Before his retirement, Daum was executive director of the Gravure Technical Association, a position he held for 19 years. He is a frequent contributor to graphic arts publications and has participated in many graphic arts seminars and programs.

"We are very enthusiastic about Daum being officially attached to RIT. His interaction with industry will stimulate our ties in the graphic arts and will help us continue to provide the best possible education for our students," commented Engelmann.

A graduate of Brown University, Daum has a master's degree from Columbia University. He also attended Harvard Business School and the Rhode Island School of Design.

He is a Lt. Commander, U.S. Navy (retired), and has received the Elmer G. Voigt Award for excellence in graphic arts education.

He will continue to live in Lawrence, N.Y., where he is a member of the Peninsula Counseling Center for Mental Health.



WARREN DAUM

## Personnel Functions Consolidated

The Personnel Office will be taking on a new look as of next week. The initial steps in the consolidation of the RIT and NTID personnel functions are now underway.

Jeanne Healy will become associate director for Personnel Administration, responsible for the compensation, benefits, and personnel systems functions. Her office, as of April 13, will be in the Personnel complex on the fifth floor of the Administration Building. Michele Riley will be her secretary. Mary Islas will serve in the position of personnel data administrator. These additions to the staff will enable the office to better serve the personnel needs of RIT.

The Student Employment Office will be moved from the fifth floor of the Administration Building to the Ice Arena conference room. (It is easily accessible through the lobby area of the Ice Arena.) Carole LaCentra, coordinator of Student Employment, and Denise Prohaska, student employment secretary, will be located in the area, and students interested in on-campus employment should contact them. Their phone numbers will be 2837 and 2631.

To effect these changes, the Personnel Office will be closed on Friday, April 10. It is hoped that this will not be an inconvenience. A more complete article describing all developments in the Personnel area will be published in several weeks.



### A BOOKMARK...AND MORE

As a reminder that the Student Escort Service is available on campus, the Department of Campus Safety is distributing bookmarks with textbooks purchased at the bookstore.

The bookmarks list the hours of the Student Escort Service and the number to call when you need an escort.

## Lecture on Magazine Advertising

"Magazines are read by the curious," William Paul, director of communications for the Magazine Publishers Association (MPA), told students at RIT last week.

Paul, whose career with MPA has spanned 13 years, spoke to School of Printing students as part of a lecture series jointly sponsored by the School of Printing and the MPA.

Comparing magazine and television advertising, Paul said, "Magazines provide a more efficient way to convey information and a more lasting message." He also pointed out that magazines are more easily retrievable, should the reader wish to re-read a specific article or advertisement.

"Magazine ads are designed to appeal to people's rational side, while television ads appeal to their emotional side," Paul said. "Good magazine advertising gives you ideas. They can be generated from recipes, decorating hints, or any other material that makes you think and then act on those thoughts."

On the whole, Paul concluded, "you come to a magazine ad of your own initiative; it doesn't come into your living room and yell at you."

## NEWS & EVENTS

Published weekly on Thursday during the academic year by the Communications Office at Rochester Institute of Technology and distributed free of charge to the Institute community. For information call 475-2750



# POLICY & INFORMATION

## ENROLLMENT SUMMARY REPORT

Spring 1981  
(as of March 30, 1981)

Head Count Enrollment—Full- and Part-time Students  
(Matriculated, Non-matriculated, Co-op)

College		Undergraduate	Graduate	Total
Applied Science and Technology	Male	1,214	160	1,374
	Female	267	79	346
	Total	1,481	239	1,720
Business	Male	887	440	1,327
	Female	717	192	909
	Total	1,604	632	2,236
Career Decision, Military Science, Other	Male	18	0	18
	Female	21	0	21
	Total	39	0	39
Continuing Education	Male	2,749	51	2,800
	Female	1,524	27	1,551
	Total	4,273	78	4,351
Eisenhower	Male	305	0	305
	Female	220	0	220
	Total	525	0	525
Engineering	Male	1,137	70	1,207
	Female	108	3	111
	Total	1,245	73	1,318
Fine & Applied Arts	Male	237	27	264
	Female	328	61	389
	Total	565	88	653
General Studies	Male	142	0	142
	Female	174	0	174
	Total	316	0	316
Graphic Arts & Photo	Male	1,227	82	1,309
	Female	296	23	319
	Total	1,523	105	1,628
NTID	Male	437	0	437
	Female	243	0	243
	Total	680	0	680
Science	Male	272	32	304
	Female	233	27	260
	Total	505	59	564
Total Institute (Spring 1981)	Male	8,625	862	9,487
	Female	4,131	412	4,543
	Total	12,756	1,274	14,030
Total Institute (Spring 1980)	Male	8,263	904	9,167
	Female	3,633	374	4,007
	Total	11,896	1,278	13,174

Anyone wishing the source or additional information on any of the above, call ext. 2527.

## Baker Named Assistant Dean

Dr. Wendy L. Baker has been appointed assistant dean in the College of Engineering. Previous to her appointment, effective April 1, she had been administrator of the Career Education Continuum at RIT.

She was formerly acting director of cooperative education, coordinator of cooperative education and, prior to those positions, academic specialist in the College of Engineering at Michigan State University. She directed an internship program involving 200 engineering students and more than 50 employers and worked in the areas of career planning, academic advising, orientation and special programs.

Her appointment was announced by Dr. Richard A. Kenyon, dean of the College of Engineering, who noted that she "brings a wealth of experience and tremendous enthusiasm to her new position."

Baker received her Ph.D. in administration and higher education from Michigan State in 1980.

## Minority Students, Faculty Sought

The RIT Minority Student and Faculty Recruitment Committee has been established to facilitate the acquisition of additional minority graduate students and faculty. For the first year, the committee will implement these objectives through industry loans, the use of the Educational Testing Service's Minority Graduate Student Locator Service, scholarship aid, the acquisition of grants, and cooperation with all academic units in the identification of minority students and faculty who would be interested in RIT.

The committee will also attempt to establish ties with one or more primarily Black or Hispanic colleges for the purpose of facilitating faculty exchanges that are approved by the respective academic units. All objectives are part of a three-year development plan.



# Leslie Receives History Award

Stuart W. Leslie, an assistant professor in General Studies, has been awarded the Columbia University Prize in American Economic History in honor of Allan Nevins for his dissertation entitled "Charles Kettering and the Copper-Cooled Engine." The dissertation, which was first published in *Technology and Culture*, will now be published by Columbia University Press.

Leslie has also received the Abbot Payson Usher Prize from the Society for the History of Technology for the same paper.

His combined interests in art, history and technology developed when he was awarded a fellowship from the Dupont Co. to pursue museum studies in industrial technology at the University of Delaware following his graduation from Carleton College as a history major.

Much of the research on Kettering, one of the founders of General Motors, was done in the GM archives in Detroit. Since 1977, Leslie calculates he has read about 100,000 letters by Kettering and interviewed dozens of people who worked with him. "Kettering was a flamboyant, highly creative character," Leslie says. "His ideas and Alfred Sloan's organizational brilliance made GM into the largest organization in the world for many years."

Leslie received his MA and Ph.D. from the University of Delaware in the history of science and technology. His teaching assignments at RIT, his first teaching job, include American History, the History of Science and Technology



STUART W. LESLIE

and the Social Consequences of Technology.

"I think RIT is the ideal place to teach these courses," he says. "Career-oriented students have different viewpoints. Here we look at the history of packaging or the history of photography, rather than at the chronological account of events that history majors would expect. It's a different sort of challenge that I have enjoyed very much."

Next fall Leslie will be at Johns Hopkins University on a year's leave of absence as a Carnegie-Mellon Fellow.

## MATHEMATICS COLLOQUIUM

Title: "Applications of Mathematics to Cryptography"

Speaker: Dr. Stephen Cavior, professor of mathematics, SUNY at Buffalo

Date: Wednesday, April 15

Place: Building 8 (Science) 1174

Time: 3:00 p.m., refreshments at 2:45

## NEWS & NEWSMAKERS

Dr. Paul Bernstein, dean of Graduate Studies, recently gave a paper at Erie Community College in Buffalo on "Liberal Education and Work Values." His presentation was part of the annual faculty day sessions to foster career and personal development.

Physics professor V. V. Raman's paper, "Einstein and the Scientific Spirit," has appeared in the April issue of *Science and Culture*.

Warren E. Crichlow, assistant director of the Higher Education Opportunity Office, is the recipient of a full-tuition scholarship and teaching assistantship at the University of Rochester. Crichlow will continue his studies on a full-time basis in the field of sociology of education and will take a one-year leave of absence to pursue his doctorate.

Albert J. Ossman, professor of political science and public policy at Eisenhower, is in Washington, D.C., working as a consultant in the Executive Office of the President.

Ossman works with John Rogers, special assistant to the President for Administration and director of the Office of Administration, who reports to Richard Darman, Chief of Staff for the White House in the Reagan administration. His office is in the historic Old Executive Office Building, which is part of the White House complex.

"Basically I'm giving advice about the restructuring of the Office of Administration and the reorganizing of such functions as personnel, financial management, information service, information systems and computer facilities management," Ossman says.

## Lehigh Press Creates Endowment

The Lehigh Press, Inc., has created an educational endowment fund in printing/production management for RIT's School of Printing.

The goal of the endowment fund is \$250,000. The Lehigh Press, Inc., established the fund with a \$50,000 gift to the Institute.

The fund, which will be known as the Lehigh Press, Inc.—Valentine R. DePaul Founder's Fund, will provide undergraduate scholarships, faculty internships

and curriculum development in printing process control.

In announcing his company's gift, M. Edward Rosenblum, executive vice president of The Lehigh Press, Inc., said the fund was created "to advance state-of-the-art educational programs, particularly in the new technologies."

The Lehigh Press, located in Pennsauken, N.J., is a \$100-million diversified graphic arts communications company.



Rochester Institute  
of Technology Rochester, New York

# RIT WOMEN'S SOFTBALL

1981

Experience the  
TIGER SPIRIT!

Featuring depth and quality throughout the lineup, the RIT women's softball team embarks on its second varsity campaign. Under the direction of Coach Lynn Simmons, the women opened the 1981 season hosting U of R for a single contest Wednesday, April 8.

In all, the Tigers face a 13-game schedule and Simmons is optimistic about their chances of improving on last year's 5-1 overall record. "The talent on this year's team is more than adequate," says Simmons. "With improved hitting, we have the potential for an excellent season."

Returning to lead the mound corps is senior Ellen Lawrence. Last year Lawrence posted a 4-1 record and an earned run average of 2.26. She averaged 9.3 strikeouts per contest. Serving as co-captain, Lawrence is considered an improved, smarter hurler by Coach Simmons. She has speed and accuracy and is presently working on the curve, riser and sinker.

Also back on the mound is sophomore Holly Silkman. Joining them is freshman Cheryl Stook. Silkman may also see infield or outfield duty. Stook played three years of varsity softball and captained her high school team as a senior.

Behind the plate are Annette Schneider, Jeanne Arnold and Ruth DiBona. Schneider is a top freshman prospect with an excellent arm and a command of the game, according to Simmons. She is considered a smart receiver with leadership potential. Arnold returns for her second campaign. Simmons calls her a smart, dedicated player with very good potential. DiBona could back up behind the plate, but will most likely see duty in the outfield.

The situation at first base is very solid with Tracy Pfeifer and Pegi Feltz returning. Pfeifer has both experience and a good glove. She batted .444 last spring and is expected to repeat. Feltz can play both first and second base. She handles the ground ball very well and has quickness and good softball sense. She also will be relied on for batting and base running.



*Veteran infielder Pegi Feltz*



# Women's Softball Underway...

Feltz, Dodi Rabinovitz or Lori Baldwin will be at second base. Rabinovitz has good lateral moves and gained valuable experience last spring. She comes off a very good season with the RIT women's hockey team. Baldwin was an excellent all-around athlete at Cato-Meridian High School, earning all-star honors in softball and volleyball. She is coming off a solid season with the RIT volleyball squad.

Beth Corker and Sherri Beaton are the keys at shortstop. Corker, deaf player from Carbondale, Ill., is considered an excellent softball player by Simmons. Her quickness and good arm will make her a key person in the double play. Simmons expects the hard working freshman to excel on the base paths as well. Beaton is a promising freshman with a good bat and glove.

Captain Susan Fabi returns to third base. Simmons points to Fabi for strong leadership both on and off the field. She is a good all-around player with sound fielding, knowledge of the game and a fine arm. Backing up is veteran

Jennifer Pollinger. She has a decent arm and is expected to see plenty of action. Her hitting will be a big factor in the team's success this spring.

Seven players are vying for starting spots in the outfield. Ruth DiBona will be in left. She is a good fielder with a strong arm and softball savvy, and will be relied on for hitting and base running. Transfer Donna DiMeo is a welcome addition. She comes from Suffolk County Community College, where she starred in softball and basketball. DiMeo has a strong arm, good knowledge of the game and is working very hard. She can also play infield. In right will be Renate Doeve, Sue Zupnik or Lori Baldwin. Doeve is working to improve her batting and has good softball sense. Zupnik has moved from the infield and possesses a strong arm. Her bat will play a major role, and Simmons expresses much confidence in the senior deaf player.

Lisa Morabito and Pam Stutzman are also expected to see duty in the outfield.

Stutzman is a hard worker and could see action as the designated hitter. Morabito had an excellent sports career at Churchville-Chili High School.

RIT's lone loss last year came against University of Rochester. Simmons looks to avenge that loss in the opener. Several new teams on the schedule include Geneseo, Niagara, Elmira, Northampton Community College and Eisenhower. Simmons welcomes the competition and sees the opener against UR as a big game. "We need to play like a seasoned ball club in the early games," comments Simmons. "That will set the pattern for the year. I look for the best from the players at all times, and I expect to gain the respect of the opposition, win or lose."

Assisting Simmons this spring are Kathy Robords and Tom Cali. Robords also doubles as women's swim coach and physical education instructor. Cali, fourth-year student, is back for his second season.



*RIT WOMEN'S SOFTBALL TEAM....Front row (left to right): Jennifer Pollinger, Renate Doeve, Susan Fabi and Ruth DiBona. Second row (left to right): Dodi Rabinovitz, Sue Zupnik, Lori Baldwin, Donna DiMeo, Ellen Lawrence, Jeanne Arnold and Cheryl Stook. Third row (left to right): Coach Lynn Simmons, Annette Schneider, Sherri Beaton, Pam Stutzman, Holly Silkman, Lisa Morabito, Pegi Feltz, Tracy Pfeifer and Student Assistant Tom Cali. Missing from photo: Assistant Coach Kathy Robords and Beth Corker.*





Co-captain Susan Fabi, junior co-captain from Webster, N.Y.



Coach Lynn Simmons



Assistant Coach Kathy Robords

## 1981 Roster

No.	Player	Yr.	Pos.	B/T	Hometown/High School
2	*Jeanne Arnold	So	C/OF	R-R	DeWitt, NY/Jamesville-DeWitt
4	Lori Baldwin	Fr	OF/IF	R-R	Cato, NY/Cato-Meridian
16	Sherri Beaton	Fr	SS	R-R	Utica, NY/Notre Dame
13	Beth Corker	Fr	SS	R-R	Carbondale, IL/Carbondale
19	Ruth DiBona	Jr	OF/C	R-R	Webster, NY/R.L. Thomas
7	Donna DiMeo	Sr	OF	R-R	Astoria, NY/Mater Christi
5	*Renate Doeve	So	OF	R-R	Westmont, IL/American School
1	+*Susan Fabi	Jr	3B	R-R	Webster, NY/R.L. Thomas
3	*Pegi Feltz	Sr	1B/2B	R-R	Danby, VT/Burr and Burton
18	+*Ellen Lawrence	Sr	P	R-R	Bethlehem, PA/Wilson
8	Lisa Morabito	So	OF	R-R	Spencerport, NY/Churchville-Chili
10	*Tracy Pfeifer	Sr	1B	R-R	Fulton, NY/G. Ray Bodley
12	*Jennifer Pollinger	Sr	3B	R-R	Hornell, NY/Hornell
15	*Dodi Rabinovitz	So	2B	R-R	Winthrop, MA/Winthrop
17	Annette Schneider	Fr	C	R-R	Pittsburgh, PA/Bethel Park
6	*Holly Silkman	So	P/IF	R-R	West Redding, CT/Henry Abbott
9	Cheryl Stook	Fr	P	L-R	Northfield, VT/Northfield
20	Pamela Stutzman	Fr	OF	R-R	Tonawanda, NY/Kenmore West
14	*Susan Zupnik	Sr	OF	S-R	Maplewood, NJ/Kent Place

+Captains; \*Veterans

Coach: Lynn Simmons  
 Assistants: Kathy Robords, Tom Cali  
 Captains: Susan Fabi, Ellen Lawrence  
 Location: Rochester, NY  
 Enrollment: 8,500  
 Conference: NCAA, ECAC, NYSIAAW, ICAC  
 Nickname: Tigers  
 Colors: Burnt Umber, Orange and White



Student Assistant Tom Cali



# Team Records

Best Won-Lost Season:	5-1	1980
Most Wins, Season:	5	1980
Most Consecutive Wins:	5	1980
Most Losses, Season:	1	1980
Most Consecutive Losses:	1	1980
Best Batting Average, Season:	.337	1980
Best ERA, Season:	2.26	1980
Most Runs, Game:	27	1980 vs. LeMoyne (27-2)
Most Runs Allowed, Game:	12	1980 vs. UR (12-9)

# Team Records, Game

At Bats:	50	4/19/80 vs. LeMoyne
Runs:	27	4/19/80 vs. LeMoyne
Hits:	17	4/19/80 vs. LeMoyne
	17	4/26/80 vs. Keuka
Doubles:	3	4/19/80 vs. LeMoyne
Triples:	3	4/19/80 vs. UR
Home Runs:	2	5/12/80 vs. Roberts Wesleyan
Stolen Bases:	10	4/19/80 vs. LeMoyne
	10	5/12/80 vs. Roberts Wesleyan
Sacrifices:	2	4/19/80 vs. LeMoyne
	2	5/12/80 vs. Roberts Wesleyan
Walks:	8	5/12/80 vs. Roberts Wesleyan
Strikeouts:	2	4/9/80 vs. UR
	2	5/12/80 vs. Roberts Wesleyan
RBI's:	20	4/26/80 vs. Keuka
Assists:	10	5/12/80 vs. Roberts Wesleyan
Errors:	6	5/12/80 vs. Roberts Wesleyan
Total Bases:	25	4/19/80 vs. LeMoyne
Left On Base:	10	4/26/80 vs. Keuka

# 1981 Schedule

Wed. 4/8	UR (1)	4:00
Wed. 4/10	NIAGARA (2)	2:00
Tue. 4/14	LEMOYNE (2)	2:00
Mon. 4/20	at Eisenhower (1)	3:00
Mon. 4/27	at Roberts (1)	3:30
Wed. 4/29	at Geneseo (2)	3:00
Thu. 4/30	at NYSIAWs	TBA
Fri. 5/1	at NYSIAWs	TBA
Sat. 5/2	at Northampton (2)	2:00
Tue. 5/5	at Elmira (2)	3:00

# Last Year's Results

Opponent	Own	Opp.
UR	9	12
LeMoyne	27	2
UR	13	4
Keuka	21	0
Roberts Wesleyan	16	7
*Keuka	1	0

\*Keuka contest won by forfeit.



Co-captain Ellen Lawrence



Veteran Sue Zupnik

# Team Records, Season

Batting Average:	.337	1980
At Bats:	190	1980
Runs:	86	1980
Hits:	64	1980
RBI's:	59	1980
Doubles:	10	1980
Triples:	4	1980
Home Runs:	2	1980
Total Bases:	88	1980
Slugging Percent:	.463	1980
On Base Percent:	.414	1980
Walks:	27	1980
Strikeouts:	6	1980
Sacrifices:	3	1980
Stolen Bases:	34	1980
Putouts:	102	1980
Assists:	34	1980
Errors:	10	1980
Fielding Average:	.932	1980
Left On Base:	39	1980



## Postal Notes

The increase in postal rates (from \$.15 to \$.18 for the first ounce and from \$.13 to \$.17 for each additional ounce up to 12 ounces) has been in effect since March 22. These rates can have quite an impact on departmental postal expenses. In many cases, alternate methods of mailing may be more cost effective, especially if large volume mailings are involved. Mail Services recommends that you call if there are any questions regarding your mailing (2115 or 2300).

Department heads should consider the possibility that postal costs will increase another \$.02 by mid-year for first-class mail. It is the intent of the Postal Service to pursue very aggressively the

\$.20 charge they originally requested.

Mailing lists should be reviewed to eliminate outdated or duplicated addresses. Another area worth examining is business reply mail. The mailer elects to pay the cost of the postage (\$.18 for a letter, \$.12 for a card) plus a \$.05 fee charged by the Postal Service. Should your department or your respondent pay for postage?

(Inter-office information should not be sent through the Postal Service. It should be addressed correctly, showing the individual's name, department and building number, and identified as inter-office mail. Mail Service will deliver it on its next scheduled delivery.)

## Students Enlarge Horizons

*This is the conclusion of a two-part article on recent off-campus student learning experiences funded in part by Complementary Education.*

Marty Connors, philanthropic chairman for Phi Kappa Tau fraternity, organized the trip to Glenmary. The "Week of Service" was set up to provide social awareness of the needs of America's poor.

"We were a bunch of green college kids going out to the farms," he smiles. "We learned a lot from those people."

During the day some students worked at the mission itself, while others were sent out to local farms.

"These people may be poor, but they are full of spirit and joy. They love their land," says Connors. "Harry and Wanda, next door neighbors to Glenmary, live on \$20 per month. They are content. They have a phone and a toilet. We see it as poverty. They see it as luxury.

The D. C. trip made a similar impact on those students. "I think everyone learned it's time to really study and graduate soon, or financial aid might not be around," says Sandra Fountain, a HEOP student on the D. C. tour.

"It's time to quit 'shuckin' and jivin'." Education is more important to people now that they've seen what it's like in Washington," she continues. "We learned an awful lot. You got back and wanted more."

"Lots of students went out to do their own research while in D. C. They went to work in the Library of Congress instead of just touring it," says Charles Hetzel, director of HEOP at RIT.

"I was so proud to be associated with these students. Their questions were superb. They persisted, and they did their homework," adds Cynthia McGill, head of RIT's Special Services department.

In addition to the \$450 each student trip received from Complementary Education, students had financial support from a variety of sources. Students going to D. C. each paid \$25, and added several hundred dollars from the proceeds of previous bake sales. Remaining trip expenses were picked up by the HEOP and Special Services offices.

Students on the Glenmary trip received contributions from Greek organizations, campus prayer groups and the Catholic Campus Parish. RIT's annual fund raising drive also provided some funds to students who participated in their phone-a-thons.

Both groups hope their trips will become annual events and include more people and more faculty involvement.

## Chili con Frijoles, Carne? Muy Bien!

If you think you make the world's greatest chili—or at least the greatest chili at RIT—you'll have a chance to prove it at the first annual RIT Texas Chili Contest on May 16.

The chili competition will highlight distribution of *Symposium*, RIT's literary magazine, on that date.

The chili competition and *Symposium* distribution will begin at noon on the academic quadrangle. Prizes will be awarded in several categories for chili expertise. Also awarded will be prizes for best student poetry and prose, and the 1981 Kearsse Award recipients will be recognized.

Although all students, faculty and staff will be invited to come and sample the chili, the competition itself is limited to the first 50 entries.

If you'd like to put your chili to a taste test, you can sign up at the desk in the College-Alumni Union before April 24.

## Photo/Study Tour In China

Tom Muir Wilson, associate professor of photography, is leading a two-week photographic study-travel workshop to Hong Kong and Mainland China this summer. According to Wilson, the tour is designed both for persons who have never seriously taken photographs and experienced photographers.

The tour will leave from New York City on August 11 and return there on August 25. Tour participants will spend eight nights in Hong Kong and will travel for four days in the Canton province of China. Included in the \$1,357 price is round-trip airfare, transfers, hotels in Hong Kong, hotels and meals in China, plus one breakfast and one dinner in Hong Kong.

In preparation for the trip, Wilson is offering tour participants a weekend seminar on customs in China, preparation of camera gear and what to expect in Hong Kong and China. The workshop costs an additional \$185.

The tour is sponsored by the Technical and Education Center of the Graphic Arts. For more information, contact Val Johnson at 2758.



# EMPLOYEE BENEFITS

Full-time and extended part-time employees wishing to change their Institute health plans may do so, **effective May 1**. These plans are the Blue Cross and Blue Shield with Blue Million Major Medical, Group Health (the Wilson Health Center), Preferred Care, and the RHN Plan.

**Blue Cross** (Hospital Coverage) provides up to 120 days paid-in-full room and board for semi-private care. An allowance for 120 days of semi-private care is made for the normal maternity coverage for the mother. There is full coverage for x-rays and certain diagnostic procedures when such services are rendered and billed by the out-patient department of the hospital.

**Blue Shield** (Physician Coverage) provides payment for surgery, in-hospital medical visits and full maternity based on the Blue Shield schedule of allowances. X-rays are covered at 100 percent of the schedule of allowances for in-patient and 80 percent for outpatient services.

**Blue Million** (Major Medical), if the above coverage is exhausted, provides for an additional \$1,000,000, subject to the deductible and co-insurance, toward semi-private room charges. Certain other diagnostic procedures, along with physician office visits, consultations, ambulance service and prescription drugs are covered at 80 percent after a \$100 deductible has been satisfied per individual per calendar year.

The cost for a hearing aid is reimbursed at 80 percent up to a \$200 lifetime maximum, after the \$100 deductible has been met. This is a one-time only reimbursement.

**Group Health** offers an alternative to traditional insurance by combining comprehensive benefits with an organized, personalized system of health care delivery. Group Health currently operates the Joseph C. Wilson Health Center (800 Carter Street) and, in July, will open its second full-service facility, the Marion B. Folsom Health Center (1850 Brighton-Henrietta Town Line Road).

Group Health provides complete hospitalization, office visits, adult and pediatric physical examinations, eye examinations, allergy testing and injections, specialists' care, consultations,

24-hour emergency care, etc. Members pay a \$3 registration fee for all services received on the same day. Members choose a personal physician from the health center's medical staff. In addition to the medical staff, the health centers have their own facilities for laboratory and x-ray service, outpatient surgery, casting, and physical therapy and a pharmacy and optical shop for members' convenience.

Tours are offered at the Wilson Center every Wednesday evening. They begin at 5:30 p.m. and run every half hour until 8 p.m.

**Preferred Care** is Rochester's newest health maintenance organization (HMO) and provides services to its members in the private physician's office.

Once you join the plan, you choose your own primary care physician for each member of your family. Approximately 350 area physicians are participating in Preferred Care. Each time you visit the doctor, you pay only \$3.

Preferred Care also provides unlimited coverage at area hospitals, full maternity benefits and emergency care, both in and out of the area. Dependents who are full-time students will be covered to age 23.

**The RHN Plan** is designed to bring economical personalized health care within easy reach of area residents. This year the RHN Monroe Plan will be offered as well as health centers. Health centers accepting new members include Webster Health Center, Northeast Health Center, Westside Health Services, Anthony L. Jordan and Riverton Medical Center. Genesee Health Service will accept only new members who are already using the center's services. The Monroe Plan offers you comprehensive RHN Plan benefits in the setting of a private physician's office. Members choose their primary care physician (pediatrics, internal medicine, OB/GYN) who then provides and arranges for health care needs. A list of participating physicians is available by calling 442-0100. A \$3 registration fee per day covers all services provided or arranged by your RHN physician. All your present health care benefits are included plus coverage for such items as physical examinations, routine office visits, pediatric care, lab work, x-rays, and many other benefits.

## INFORMATION ABOUT HEALTH PLANS

Representatives from Group Health and the new Preferred Care Health Insurance plans will be on the RIT campus twice this month and at City Center once to present their plans and answer questions. RIT employees are encouraged to take advantage of one of these meetings to learn about the benefits offered by each plan.

**Tuesday, April 14**

8:30 a.m., Physical Plant (Bldg. 99) Lounge (across from Purchasing)

Noon, City Center, Room 3130  
3 p.m., Ingle Auditorium,  
College-Alumni Union

**Wednesday, April 15**

9 a.m., Ingle Auditorium,  
College-Alumni Union

3 p.m., NTID, Cluster classroom,  
No. 1460

All meetings will last approximately one hour.

## Computer Services Restructured

In response to the growth in computing and information systems, RIT's Office of Computer Services has been restructured. As a result, the office is now known as Information Systems and Computing (ISC) and consists of six departments. Mike Charles has been promoted to assistant vice president of the office.

The new department—academic computing—is conducting a formal search for a director. Until the search is concluded, Ron Stappenbeck serves as acting director.

The other departments within ISC are: assistant vice president's office, systems development, data center operations, technical support, and user services. User services, which will enter the word processing/office information area, is being readied to address all types of systems and services users.



# PROFILE

## Rostan: He Saw One Game and Was Hooked

For one who waited until college to start playing lacrosse, RIT coach Ray Rostan has come a long way.

In a brief span of 11 years, the native of Copiague, N.Y., has gone from player on the college and professional levels to coach, guiding the Tigers to an 11-4 mark last year, the best in RIT lacrosse history.

His interest in the game began as a senior at Long Island Lutheran High School. "I was competing with the track team at C.W. Post College," relates Rostan. "Cortland and Post were playing lacrosse nearby. With the excitement and enthusiasm I saw, I realized this was the game of the future."

He traded his 12-point shot put for a lacrosse stick for the following year as a freshman at Cortland, and his destiny was set in motion.

Well versed in all facets of the stick game, Rostan came to RIT in 1978 and begins his third season as head mentor. Along with his lacrosse responsibilities, he serves as physical education instructor. Last fall he was assistant soccer coach.

Hard work, team unity and commitment to the game are the qualities he seeks to instill in his athletes. "These aspects of the game are all part of what makes for wins and losses," states Rostan. "After academics, I expect a total commitment from my players."

"Lacrosse is a game of excitement. It combines a variety of skills from sports like hockey, soccer and basketball. I view it as a game of speed with control."

Rostan's philosophy began to develop during his playing days at Cortland, when the Red Dragons won the Division III title and competed in the prestigious Division I championships, finishing fourth among the very best in the country.

After graduation, Rostan was drafted by the Rochester Griffins, a professional indoor squad in the National Lacrosse League. Ironically, his first tryout was held during the summer in the RIT ice rink, minus the ice. Little did he realize that four years later he would return to the Institute as head lacrosse coach of the Tigers.

After a year in Rochester, the Griffins changed ownership and moved to Long



RAY ROSTAN

Island, where they became the Tomahawks. In his two professional seasons, Rostan played on two league championship teams.

From the professional ranks, he went to Farmingdale State College as lacrosse assistant. After a year's graduate study at Ithaca College, he returned to Farmingdale and remained another season until joining RIT. At Ithaca he served as lacrosse assistant while obtaining his master's degree in physical education.

In the past 11 years, Rostan boasts playing with 18 different teams, including college, indoor and summer programs.

Along with his coaching responsibilities at RIT, Rostan has taken a very active role in recruitment of student athletes. He has covered New York State, placing emphasis on the lacrosse hotbeds of Long Island, Syracuse, Corning and the Rochester area.

In the summer he runs the RIT Lacrosse School, this year featuring sessions for beginners and advanced players. He plans to culminate the school with an all-star game, featuring some of the top senior high school talent in the area.

There's a new addition to the Rostan household. On Feb. 3, Ray and his wife

Karen became parents of one Jason Ryan. Rostan admits he's planning on a lacrosse career for his son and has already purchased a small stick for the future player.

What lies ahead for Rostan and his Tiger stickmen? "I look to improve the program over the next two to three years to a level where it can be competitive with the top teams in Division II and III. I've been fortunate to play and be associated with some successful programs in the past 11 years."

"While we are always striving for a winning record at RIT, the lessons of team unity, commitment, hard work and an appreciation of the game by both players and fans are equally important."

### FACULTY & STAFF SOFTBALL

There will be an organizational meeting for the Third Annual Faculty and Staff Softball League on Wednesday, April 15, at 4 p.m. in Room M1, College-Alumni Union. Anyone interested, please attend or send a representative for your group or team.

For further information, please phone Mike at 6960.





## Management

Continued from p. 1

service citations to Rochester Savings Bank in honor of its 150th anniversary and to the American Red Cross on the occasion of its 100th anniversary. The citations were accepted by Fred Ray, president of Rochester Savings Bank, and Leonard Simon, chairman of the Rochester-Monroe County Chapter of the Red Cross and vice president, Community Savings Bank.

The convocation speaker was Thomas H. Hawks, honorary chairman of the board, Rochester Savings Bank, and Monroe County Chapter of the American Red Cross. Hawks described Rochester as a "town that has built itself on the application of knowledge. Kodak, Xerox and RIT, among many others, stand in testimony to that claim. Here the real world is part of education. Management process is not just an abstraction; it is people and things that have to be understood and worked with as part of doing the job."

Hawks described Rochester Savings Bank and the Red Cross as "representative of what makes Rochester tick.... The bank sprang from the work and thrift ethic of the mechanics and merchants who settled here in the 1830s." He also noted that the early arrival of the Red Cross in Rochester (this was the second chapter in the nation) was "a manifestation that liberal social ideas were tolerated here."

The historical links between these two organizations and with RIT were graphically portrayed in a slide show that Rochester Savings Bank has produced in conjunction with the bank and the Red Cross anniversary celebrations.



*During reception before the convocation, President Rose chats with RIT trustee Ted Altier.*

### How well do you speak on your feet?

**RIT Toastmasters can help you!  
Our next meeting is Monday, April 13, at 7 p.m., in room 1829, College-Alumni Union. Special guest speaker: Mike Law, professor of business law.  
If you have any questions, call John Montean at 889-2019.**

## Thesis Show Opens

The first of two thesis shows featuring the works of graduate students in the College of Fine and Applied Arts will open tomorrow (April 10) in Bevier Gallery. The opening reception will be held from 8-10 p.m. that evening. The show features paintings, sculpture, wood and metal crafts, ceramics, fiber work, jewelry and communications works and will run through April 23.

### LOMB LUNCHEONS

- April 9—Chicken Marengo, Buttered Noodles, California Style Broccoli or Soup and Sprout-Egg Extravaganza; Butterscotch Tart
- April 10—Baked Haddock, White Rice, Broccoli Polonaise or Soup and Layered Spinach Salad; Pineapple Cake
- April 14—Beef Stroganoff, Noodles, Spinach Salad or Soup and Farmerboy Sandwich; Fruit Cup
- April 15—Salmon Surprise, Hot Spinach Salad, Crescent Roll or Soup and Monte Cristo Sandwich; Gelatin
- April 16—Baked Ham and Macaroni Casserole, Tossed Salad, Crescent Roll or Soup and Queen Victoria Sandwich; Lemon Chiffon Pie

Lomb luncheons are \$2.50 per person; call 2351 for reservations.

**CANCELLATION:** The faculty seminar, "Early Retirement Strategies," scheduled for Monday morning, April 13, has been postponed and will be rescheduled at a later date.