

April 19-May 2

1976 UCC Campaign underway: 190 RIT people aided last year



According to Personnel Director Everett C. Merritt, the United Community Chest and Red Cross Campaign was "working" for 190 RIT employes last year.

"Nearly 70 per cent of every dollar contributed by RIT employes was returned to RIT people in social, legal, recreational and medical services through UCC supported agencies," Merritt remarked.

From Campfire Girls to Convalescent Hospital, more than 26 local United Way agencies aided RIT employes, according to figures released by UCC Coordinator Ira Cooperman. The agencies returned \$16,353.78 in direct support and services during 1975.

But, no less important, are the quarter of a million-plus people who will be served by the Red Feather agencies. In fact, better than 150 agencies will provide critical human services to residents in Monroe, Ontario, and Wayne counties... people in your community.

"The United Community Chest supports people, not agencies," says John Bodwell, RIT's director of Development and UCC Campaign training coordinator.

Doing our part in helping the campaign reach its goal of more than \$15 million dollars is no easy task. And Bodwell has trained a group of more than 100 RIT people to canvass the campus for donations.

In a letter to Institute faculty and staff, President Paul Miller noted the good work of the Chest and called for the RIT community's support.

"At RIT, I hope that all of us will keep the good work of these Community Chest agencies in mind. Contributing to this necessary effort is an important way for RIT to demonstrate its continuing concern for the community of which it is a part," Miller said.

"If you wish," Miller continued, "you may designate a single agency to receive your donation."

This year, RIT will again have a payroll deduction plan, and employes will also have the option of making their donation in cash, check, or be billed by the Chest.

So when you're asked to "keep it working," give it some thought. One of the quarter of a million people that you are helping may be the person in the office next door.

For many, "Thanks to you it's working" means much more than just another slick slogan from Madison Avenue.

"But who's it working for?" you may ask. Get ready for a few surprises.

New benefits announced for part-time employes

A new program of increased benefits for many of RIT's part-time employes has been announced.

According to Everett C. Merritt, director of Personnel, added coverage will be available for part-time staff members who regularly work 20 or more hours a week (1,000 hours per year) as "extended part-time employes."

Merritt added that "part-timers whose schedules are less than this will not be affected by the changes. And that newly defined extended part-time staff will soon be contacted individually by the Personnel Office to complete enrollment arrangements."

The benefits that will take effect July 1 include:

RIT will provide group Blue Cross/Blue Shield, prolonged illness protection and the two alternative health care plans. Optional for extended part-time personnel with no waiting period. RIT will pay one-half the single premium or one-half as much toward a family premium as is paid for full-time employes. Two alternative health care programs will also be open to extended part-time personnel.

The Institute will offer Major Medical Insurance coverage to extended part-time personnel through TIAA. Optional

enrollment with one-half the single or family premium paid by RIT, the other half by the staff member through payroll deduction.

Vacation will now be available to extended part-time personnel upon employment according to the same schedule as full-time staff of the same employment category (i.e. general, hourly, or administrative staff). A week of vacation for any part-time employe, however, will mean vacation with pay for the number of hours normally scheduled to work.

Benefits

cont'd from p.1

In addition, last fall the Institute announced the availability of the TIAA/CREF program as of January 1976 to all part-time staff and faculty. And, as of January 1, RIT increased annuity plan participation through an 8 per cent of basic salary Institute contribution in addition to the individual contribution (2 per cent of salary or greater), Merritt said.

Participation in this plan is optional for extended part-time personnel with three years at RIT and 25 years of age or older, but is required if the employe has been with the Institute for at least three years and is 35 or older.

Merritt said, "The improvements are a result of a widespread campus review of the basic needs of part-time Institute staff."

He added, "Input was received from several RIT offices, groups, and organizations during the evaluation study, which lasted more than a year."

Paid holidays will now be provided upon employment if an extended part-time staff member is normally scheduled to work on that day of the week and will be paid for the number of hours scheduled.

Sick leave will also be earned and accumulated by extended part-time personnel at the rate of eight part-time days per year. This provision is available after completion of the initial three month probationary period.

Any part-time staff member who is now or who may become full-time on or after July 1, 1976, will receive credit for prior part-time employment, if more than one year in duration. This will be prorated to an equivalent of full-time service (i.e., 3 years at half-time = 1½ years full-time; 4 years at 85 per cent of full-time = 3 years 5 months full-time).

Honors to be given

President Paul Miller will honor both past and present members of the RIT community at two dinners at his home.

New members of the 25-year club and recent retirees have been invited to attend an awards buffet May 6. Veteran club members and past year retirees will gather at an informal dinner June 8.

This year's retirees include Duane Walker, Student Health; Mildred West, Campus Services; Rose Palamita, Food Service; Elsie McSweeney, Alumni; Clarence Ashley, Campus Services; Russell Miner, College of Science; Hollis Todd, Photography; Peter McEntee, Campus Services; Irene Renner, Registrar's Office; and Emily Conklin, CCE. Hobart Cowles of SAC and William Shoemaker of Photography join the 25-year club.

RAC 'Futures' assembly held

Visionary programs and presentations ranging from space colonization to educational systems in Russia were part of the "Assembly on the Future" conference.

Sponsored by Rochester Area Colleges (RAC) the April 9 and 10 conference on the Monroe Community College Campus included more than 40 sessions conducted by faculty members, administrators, and students from the 14 area colleges as well as individuals from the Rochester business community and citizenry.

The objectives of the conference, as outlined by program director Dr. Hugh Hammett, was to increase the public's awareness of futurism, to stimulate the development of future studies and curriculum, and to develop positive ways in which colleges and community can shape the future.

"Futurism is a movement that embraces every conceivable area," Hammett said. "It's concerned with a multitude of academic disciplines. It's scientists, humanists and social scientists working together in an attempt to understand problems with the end of affecting the future.

Every conceivable facet of present and

future social existence was touched upon during the conference. Topics included mental health, aging, energy problems, careers, role of women, urban government and many more.

RIT Associate Professor Thomas T. Hill headed a colloquium entitled, "Are Predictions of Science Fiction Authors Useful for Preparing for the Future?," while Professor Henry E. Kyburg, chairman of the Philosophy Department at the University of Rochester, spoke on "Projections of Doom and Methodologies of Salvation."

The General Assembly entitled "Toward the 21st Century" consisted of talks by Ian H. Wilson, Alan Beals and Ervin Lazlo.

Wilson, who serves on the business and environment staff at General Electric, spoke on "The Future of Business: A View of the Possible." Beals, executive vice president and chief administration officer of the National League of Cities, lectured on "Conserving the Urban Future," and Professor Lazlo of the State University College, Geneseo, Philosophy Department discussed "United States Goals and the Need for Global Goals."

Rap and Produce

Have a question about community affairs or services? Attend Rochester's sixth Rap and Produce conference May 1 at the RIT Metro Center at 50 W. Main St. and get the answers.

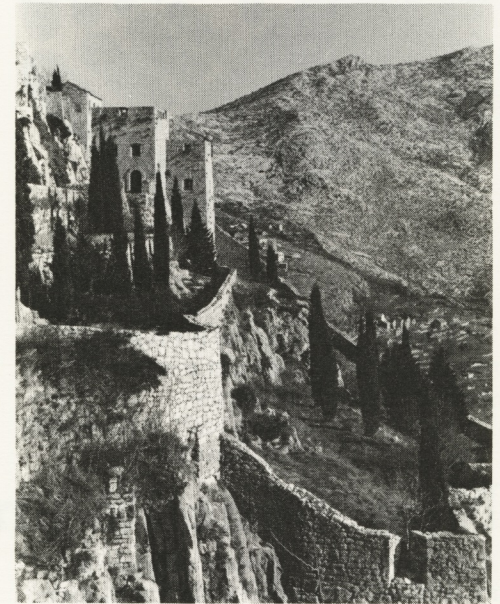
The theme of this year's program, "The Individual: Needs and Abilities," will include workshops on political awareness; lifestyles after 50; health; employment; law enforcement; organized religion and a myriad of other topics.

The purpose of the conference is two-fold: to familiarize community members with the workings of and services provided by civic organizations and to provide a forum in which individuals can indirectly transmit their opinions and ideas to these agencies.

"Rap and Produce gives people the skills and knowledge they need to get involved and participate in community agencies," said Jessie James, conference coordinator and founder of the program. "Students, housewives, welfare recipients, administrators—we try to get a cross section of people involved. Hopefully a member from (the respective) organization will also attend to contribute input."

Richard Morales of the RIT Department of Social Work will be the keynote speaker.

Registration for the day's activities will begin at 8 a.m. The fee is \$5 for the general public and \$1 for students and senior citizens. Those who feel they can not afford the fee will be subsidized.



CASTLE CLICKS—RIT's annual photographic travel-study workshop will be going to Greece and Yugoslavia this summer.

The five-week course begins June 21 with two weeks of study on campus. The all-day sessions include classroom, laboratory and studio instruction, along with photo assignments in the Rochester area. Special lectures will be given by guests from Yugoslavia and Greece.

The workshop, under the direction of Professor Tom Muir Wilson of the School of Photographic Arts and Sciences, is open to anyone interested in photography and foreign travel. It may be taken for either graduate or undergraduate credit.

Albers dead at 88

Josef Albers, one of the world's renowned artists, who was chosen to create art works for the RIT Henrietta campus, died March 25 in New Haven, Conn.

Albers is best known for his experiments in color, which began almost three decades ago, and his murals in brick and glass. RIT is fortunate in having the largest wall murals in his *Homage to the Square* series located in the entrance to the George Eastman Memorial Building. The orange and yellow hued murals were painted in 1969 when Albers was already 81 years old. They are 18' by 18' and are painted directly on the wall.

RIT also has an example of his work in brick murals on the building housing the College of Science. These murals have been pictured in publications about the noted artist.

Albers was educated at the famous Bauhaus in Weimer, Germany. Political pressure forced the Bauhaus to close in 1933 and Albers accepted an offer to teach at the newly-founded Black Mountain College in North Carolina. Albers has lectured at major schools of art, design and architecture throughout the United States, including Harvard University, Princeton University, University of Minnesota, Kansas City Art Institute, Pratt Institute, and the Art Institute of Chicago. In 1950, he began an affiliation with Yale University that continued through 1958 when he retired as Chairman of Yale Art School.

He continued as an active artist and teacher until his death.

Policy Council

The agenda for the April 23 Policy Council meeting is:

1. Proposal to change time for Eisenhart Outstanding Teacher Award Ceremonies from spring to fall: for action. This change is proposed to give faculty awardees time to prepare for their seminars. Also it is believed that the ceremony and seminars will receive more interest in the fall than in the spring when everyone is busy closing out the academic year.

2. Report on continuing education by Dr. Alford: for discussion. The major purpose of the discussion will be the identification of issues relating to continuing education at RIT.

3. Preliminary report from the Educational Programs Committee on irreducible competencies expected of RIT graduates. This is an item that appeared on the 1975-76 Policy Council Plan of Work as a direct result of the meeting held on the educational climate at RIT on May 28, 1975.



ALBERS ART—Josef Albers in a 1969 photograph during the installation of his mural in the Administration Building.

NSF grant awarded

For the third time in the past four years, RIT's College of Science has been awarded a grant from the National Science Foundation (NSF) for student research projects. This year's grant is for \$11,450.

Research areas cover a variety of chemical fields. The NSF has given a high priority to energy-related general research, according to project director Dr. Earl Krakower, professor of chemistry.

Dr. Krakower said participating chemistry students will be full-time undergraduates, usually juniors and seniors, who have demonstrated promise while completing a substantial part of their college science preparation. They will be selected to work in specific projects closely matched to their interests and background.

NSF awarded 201 grants from a total of 627 submitted proposals. Projects are designed to demonstrate the teaching effectiveness resulting from placing major responsibility for learning upon the student, and to help students learn the creativity demanded of scientists.

RIT's proposal described a means of integrating the NSF guidelines into a four-quarter, industrial work-academic study curriculum.

In their junior year, chemistry students are introduced to current departmental research projects. Faculty select qualified student participants, who acquire laboratory and theoretical experiences through independent study and are expected to make significant contributions to the development of all aspects of the research problem.

General research areas available for participating students include synthesis and analysis of organic compounds, biochemistry, detection of water pollutants and polymer studies.

POSITIONS AVAILABLE

Listed below are the current openings at RIT as of 4/9/76. For further information please check the current job list in your college or administrative department.

Full Time General Staff Positions

Secretary - Campus Services - Level 3
Secretary - Office of Computer Services - Level 3

Part Time General & Hourly Staff Positions

Graphics Asst. - Media Production Center
Interpreter - NTID/Support Services - Level 5
Secretary - Office of Professional Dev.
Secretary - NTID Administration
Research Asst. - Research & Development

Full Time Hourly Staff Positions

AV Technician - Curriculum, Dev. & Eval.
Electrician III - Campus Services

Full Time Administrative Staff Positions

Operations Engineer - Media Productions Center
Programmer - Computer Services
Student Organization Specialists - NTID
Jr. Programmer - Office for Program Analysis
Communications Associate - Public Affairs
Systems Analyst Programmer - Program Analysis
Professional Interpreter - Div. of Integrated Ed. Programs

Full & Part Time Faculty Positions

Instructors (2) Mathematics Learning Center
Career Development Counselor (4) Technical Education
English Specialists (4) Dept. of English-NTID
Instructor-Architectural/Civil Tech.
Asst. Professor - Electrical Engineering-Institute College
Allied Health Specialists-College of Science
Medical Technologist - Dept. of Biology
Clinical Audiologist-Division of Communications Programs
Curriculum Development Specialists
Visiting Professorship-Industrial Engineering Research & Development Associate-Dept., Integrated Ed. Programs
Research Associate-Dept. of Integrated Ed. Programs
Instructor-College of Fine & Applied Art-School for American Craftsmen
Chairperson-Instructional Television
Research Associate-Office for Program Analysis
Research Associate-Audiology Dept.
Research & Development Associate (3), Dept. of Integrated Ed. Program
Associate Educational Specialists-NTID
Developmental Ed. Specialists-Human Dev./NTID
Visiting Professor-Mechanical Engineering Dept.
Assistant Professor - Physics Dept.
Chairperson-Computer Applications
Faculty-Data Processing
Speech Pathologist-Communications Programs
Instructor-Manufacturing Process
Instructor-Manual Language Dept.
Instructor Manual Communications Programs
Professional Interpreter-General Ed. Support Team

"News and Events" is published every other Monday during the academic year by Communications Services at Rochester Institute of Technology and distributed free of charge to the Institute community. For information, call 464-2337.



Rochester Institute of Technology

One Lomb Memorial Drive
Rochester, NY 14623

CONTINUING EVENTS

BAKE SALE - Sponsored by RIT Women's Club for Student Scholarships. 9:30 a.m.-3:30 p.m. in College Union. April 14th

6th Rap and Produce Conference-to be held Saturday, May 1, 1976 from 9-5 at the RIT Metropolitan Center, 50 West Main Street. Mr. Richard Morales of the Social Work Department at RIT will be the keynote speaker. For more information contact Mrs. Phyllis Fox at 464-2938 or Mrs. Jessie James at 262-2729.

Art of the Film - Music & Sound - Film study series with highlights from the world's cinema masterpieces. Tues., April 27th, 1-2 p.m. and 6-7 p.m. Room A100, Library.

American Marketing Assoc. Rochester Chapter - 1829 Room: 11 - 3 p.m. Contact Mr. Fritzsche at 2365. April 20.

Rochester Telephone Marketing Seminar - M-2: 8-6 p.m. Contact Pamela Blank at 921-2802. April 20-22

Rochester Home Builders Assoc. - Ingle Auditorium: 5 p.m.-close. Contact Melody at 458-9080. April 20.

Monroe County Continuing Education Directors - M-2: 11-3 p.m. Contact Leona Roth at 2246. April 28.

CPA - Accounting for Pension Costs - Alumni Room: 9-5 p.m. Contact Bill Gasser at 2312. April 28.

CPA - Candidates of Rochester - Henry Lomb Room: 5-10 p.m. Contact Jim DeWan at 2374. April 29.

Alumni Placement Seminar - Henry Lomb Room: 8-6 p.m. Contact Debbie Lane at 2320. April 29.

Computer Science Seminars - Batch Processing on April 19 and Using Files, Making DCB Assignments on April 26. These separate seminars are useful for Sigma 6 and Sigma 9 computers. Time and place will be determined according to the number of registrants. For more information contact Deb Batz, Room 1141 in the Annex building, Computer Science or call 2810.

The monthly meeting of the **Professional Businesswomen's Association** will be held April 28 at 12 noon in the 1829 Room of the College Union. Mrs. Louis Lecher and Mrs. Mary Talty of the Hill & Dale Garden Club will be demonstrating "Basic Flower Arranging." Bring your lunch and join us. Everyone is welcomed.



FASHION FAVORITES—The RIT Women's Club will hold its spring luncheon at noon on April 22 in the Henry Lomb Room. Left to right are: Mrs. Timothy H. Gridley Jr., instructor in retailing; Miss Candy Cean, student coordinator; and Mrs. Edward A. Johnson, club president. The luncheon will follow a fashion show, "The Best of Rochester," which will feature clothing from Cachet, Veretta's, Snow Country, Hickey-Freeman, Sibley's and Kyoto Imports.

Houseparents needed

Edward Ziegler, manager/director of the RIT ice rink, is looking for a mature couple or individual to serve as houseparent(s) in the Summer Skating Academy next quarter.

The job entails general supervision of some 40 to 50 students ages 6 to 20 for a 10-week period. Remuneration will include free accommodations and about \$150 a week.

Initiated 21 years ago by former rink manager Lewis Elkin, the skating academy is attended by youthful skaters from all over the United States and Canada. Students are coached in the many fine points of skating technique by a professional staff made up of representatives of the Genesee Skating Club and free-lance skating professionals.

Anyone interested in this position should contact Ziegler at 464-2222.

NEWS & NEWSMAKERS

Evelyn Brandon, associate professor of psychology at RIT, has been elected president of the board of trustees of the Rochester Public Library.

A member of the library board since 1973, she is the second woman and the first black woman to head the library board. She was a member of the board of trustees of the Friends of the Rochester Public Library from 1959 to 1962.

Richard Zimmer, assistant coordinator of Audiovisual Services, recently attended the Association for Educational Communications and Technology convention in Anaheim, CA.

Reno Antonietti, coordinator of Audiovisual Services, delivered the keynote address to a Regional Research Library conference and workshop on March 23. The title of the address was "The Why of Library Instruction."

Larry Hoffman, chairman, Graduate Engineering Technology will be giving a paper entitled "Post-baccalaureate Engineering Technology--A Progress Report and a Look to the Future" at the Frontiers in Education Conference to be held in Tucson, Arizona, in October. This conference is co-sponsored by the American Society of Engineering Education (ASEE) and the Institute of Electrical and Electronic Engineers (IEEE).

Dr. Laksmi Mani, assistant professor in the College of General Studies has recently been awarded a National Endowment for the Humanities Grant to attend a seminar at Brown University during the summer of 1976. She is the fifth person in the College of General Studies to win an NEH award.