



September 13, 1974



RIT employees Linda Carrow (left) and Rosemary Sherman practice manual communication during their Community Interpreter summer training program, offered by NTID's Interpreting Services department.

Several employees of RIT were enrolled in the program, which offers training in communication with the deaf.

Linda is employed in the Institute's Payroll department, Rosemary in Accounting.

Kodak, Xerox Gifts Push Campaign Over 50

Two major corporate gifts announced last week pushed RIT's 150th Anniversary campaign over the 50 per cent mark in the current drive to raise \$42 million.

The two gifts—from Eastman Kodak Co. and Xerox Corp., were the largest to date in the nine-month old campaign.

They were announced by Arthur L. Stern, chairman of the Board of Trustees.

Stern said the Kodak gift of \$4.25 million and the Xerox contribution of \$2 million have boosted the campaign total to more than \$23 million.

Stern praised both firms for their years of support to RIT. "Kodak and Xerox have provided generous financial and leadership support to the Institute for over three decades," he said. "Both corporations played a vital role in financing RIT's move to the new campus in the sixties and are now helping to secure RIT's future for the

con't p. 4

Foundation Awards Packaging Grant

The Packaging Education Foundation has awarded RIT a \$13,000 grant for the Institute's program in packaging.

The grant was one of eight grants totalling \$75,000 made to advance college level courses and programs in packaging education during the 1974-75 school year. The announcement was made by Fred Schreiber, PEF Grants Committee chairman.

con't p. 3

Dr. Harold Alford Named In Continuing Education

Dr. Harold J. Alford, Dean of the Division of Instruction and Director of Programs of Continuing Education for the Educational Testing Service of Princeton, N.J., has been named Dean of RIT's College of Continuing Education. The appointment is effective on or before January 1, 1975.

Dr. Alford will succeed Dr. Robert D. Pease, who retired June 30, 1974, after serving as Dean since 1961. Russell A. Norton, Assistant Dean of the College of Continuing Education, currently is serving as Acting Dean.

From 1969 to 1972, prior to his appointment with the Educational Testing Service, Dr. Alford was director of the Division of Continuing Education at Kansas State University, Manhattan, Kansas. While there,

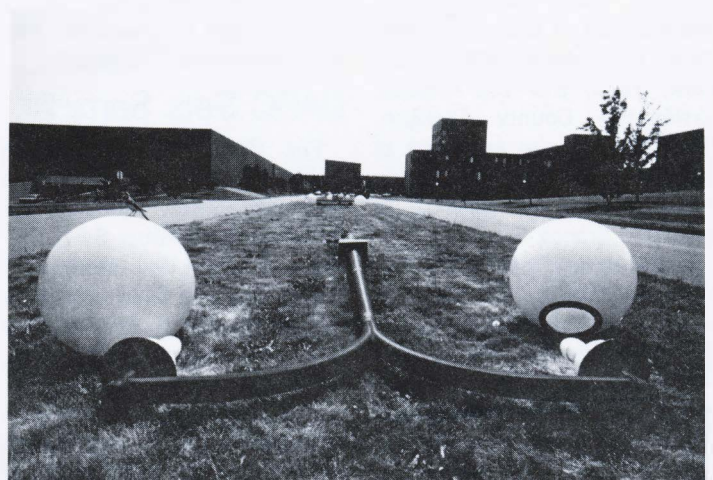
he was also Director of the Summer Session, and Professor of Adult Education.

From 1951 to 1969, he served in a variety of administrative and teaching roles at the University of Minnesota, Minneapolis. During this period, in 1965, he also was a research associate at the University of Chicago.

From 1946 to 1951, Dr. Alford was administrator of Lectures and concerts and was a teaching associate in the Department of English at the University of Washington, Seattle.

He received a B.A. degree in English Literature and a M.A. degree in American Literature from the University of Washington. He earned a Ph.D. degree in Adult Education from the University of Chicago in 1966.

con't p. 3



Light fixtures like those above along Lomb Memorial Drive have been uprooted and will be reset in concrete before Fall, according to Physical Plant. The fixtures had settled and moisture collection caused them to short out, Physical Plant officials said.

RIT Social Work Program "Outstanding" In New York"

RIT has received commendation for its degree program in social work from a State official.

The program was termed "the outstanding baccalaureate program in social work education in New York State by Philip R. Johnston, executive secretary, State Board of Social Work, state Education Department.

In a letter to Leonard Gravitz, director, RIT Department of Social Work, Johnston also noted the "vitality, depth, and commitment as well as productivity" of the RIT program which he recently reviewed.

RIT initiated the program in 1971 as a response to a trend in social work education toward offering social work preparation at the baccalaureate level. Students at RIT have both classroom and field experiences, and volunteer opportunities with various service agencies.

Spanish Artist At RIT Art School This Summer

Jose Grau-Garriga, internationally known tapester and painter, was in the United States teaching a summer session course at RIT this summer and preparing to open a one man show at Arras Gallery, New York City.

Grau-Garriga, who makes his home in Barcelona, Spain, has been in over 36 individual shows and 150 collective exhibits since 1953.

Grau-Garriga was educated at la Escuela de Bellas Artes de Barcelona and studied in Paris at the Jean Lurcat Atelier. In the U.S. he has exhibited at such places as the Fine Arts Museum, Houston, Texas, 1971; Institute International of Education, New York, 1971; Arras Gallery, New York, 1973; and Los Angeles, California County Museum, 1974. He has also exhibited at Galeria Antanona, Caracas, Venezuela and in galleries in Spain and France.

It was during the 1950's that Grau-Garriga's interest in tapestry evolved from an earlier concentration in painting. He met with the enthusiastic approval of Pablo Picasso who saw it, at that time, as an interesting innovation. Grau-Garriga thinks of himself and all artists as "discoverers and revolutionaries" and he believes



that fiber is another valid medium for the artist. "Art is the man, not the medium...that is the difference," he says.

GARC Sets Seminar

The Graphic Arts Research Center at RIT will conduct a four-day Color Seminar for Pressmen on October 8-11. Formerly a three-day seminar, a fourth day has been added by popular demand to provide more time for practical applications, particularly in the area of densitometry. Also, color control in the pressroom is emphasized rather than the production of color separations and plates.

The subjects covered in the



Ms. Andrea Dembski (above) has joined the staff of the Admissions department, filling the vacancy left by David Jones' move to Development.

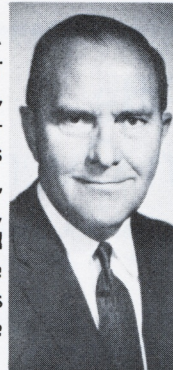
Ms. Dembski, a native of Chicopee, Mass., holds B.A. and M.S. degrees from Syracuse University, and was previously employed at Greece Olympia High School.

Houck To Direct Graphics Campaign

The graphic arts and photography portion of RIT's 150th Anniversary Campaign was kicked off last week with an all-day seminar on campus for graphic arts editors.

The kick off seminar marks the first time the Campaign has focused its attention at a specific industry and on an individual college of RIT.

George C. Houck, senior vice president, Printing Equipment of Harris Corporation, Cleveland, Ohio, was named chairman of the Graphic Arts Division of the campaign.



William J. Mariner, president of Case-Hoyt Corporation and chairman of RIT's Graphic Arts Advisory Committee said, "The combined graphic arts and photography fields represent a \$40-billion-a-year industry. This year alone RIT's College of Graphic Arts and Photography graduated 603 undergraduate and 26 graduate students into the management ranks of that industry.

"The College of Graphic Arts and Photography has gained an international reputation for its contribution to the graphic arts field."

Judy Vollmer Named To Placement Position

Judith E. Vollmer, 5400 St. Paul Boulevard, Rochester, has been promoted to associate director of Central Placement Services at RIT,



according to Richard F. Delmonte, director of Central Placement Services. Ms. Vollmer's previous positions included employment coordinator at the Graflex Division of The Singer Company, now Singer Education Systems; employment counselor of the New York State Employment Service; and training director for Sibley, Lindsay & Curr Company, all of Rochester. She has been assistant director at RIT for three years.

Ms. Vollmer received her bachelor's degree from Duquesne University, Pittsburgh, PA, and is currently enrolled in the master of business administration degree program at RIT.

She is a member of the executive board, International Association of Personnel Women; former president, Rochester Personnel Women; and visitation chairperson, Middle Atlantic Placement Association. She is also a member of the Probation, Employment & Guidance Program of the Monroe County Probation Department.

In RIT's Central Placement Office, she is responsible for career counseling and placement of seniors and alumni. She also serves on the advisory committee for Continuing Studies for Women at RIT.

Ms. Vollmer was graduated from St. Marys Central Catholic High School in 1960. She is the daughter of Jane and Walter Vollmer, 128 Oilwell Street, St. Marys, PA.

Grants

The Office of Grant & Contract Administration reminds all faculty and staff that the following are deadlines for program application. Since Institute review and approval must be accomplished prior to mailing a proposal, applicants are requested to forward their proposals to Grant Administration one week before the listed deadlines.

NATIONAL SCIENCE FOUNDATION

Sept. 20, 1974: Undergraduate Research Participation (E 75-7)
Oct. 1, 1974: Faculty Research Participation Program (E 75-17)
Oct. 11, 1974: Student-Oriented Program (E 75-7)
Dec. 13, 1974: Instructional Scientific Equipment (E 75-15)

THE FOLLOWING NSF PROGRAMS HAVE NO DEADLINE AND PROPOSALS ARE ACCEPTED ANYTIME*

1. Alternatives In Higher Education (E 74-5)
2. College Faculty Workshops (E 74-6)

3. Science and Engineering Technicians Education Program (E 74-18)
4. Minority Institutions Science Improvement (E 75-8)
5. Educational Program Restructuring (E 75-10)
6. Technological Innovation In Education (E 74-9)
7. Field-Initiated Studies and Experimental Projects In Science Education (E 74-11)(Grad & Undergrad Education Programs)
8. Materials and Instruction Development (E 75-3)
9. Educational Program Restructuring Pre-College Systems (E 75-10)
10. Field-Initiated Studies and Experimental Projects (Elementary & Secondary Education Programs)(E 74-11)

Information pertaining to the above listed programs may be obtained from the Office of Grant and Contract, 6th Floor Administration Building. Please call ext. 2388 if we may be of assistance to you.

Employee Career Seminars Scheduled By Personnel

Everett Merritt, Director of Personnel and James M. Papero, Administrator of Affirmative Action announced the establishment of the "Employee Career and Educational Advising Program" beginning Tuesday, August 13. The program will offer to discuss and develop: new career possibilities; educational opportunities and offerings; options open to individuals regarding job opportunities; setting occupational and educational goals; updating personnel folders, resumes, as well as discussing other relevant personnel matters.

Papero, who is also assistant director, Extended Services Division Community Development on a half-time basis, will be available for advising on Tuesdays and Thursdays 8:30 a.m. to 5:00 p.m. and 1:30 p.m. to 5:00 p.m. on Wednesdays. Appointments can be made now by calling 464-2065. Although all discussion will be confidential there may be times when an employee and supervisor may wish to discuss and develop an employee program together with Mr. Papero.

The Counseling Center will also be available to assist in the

program whenever additional testing or advanced counseling is needed and requested.

The Affirmative Action Office is also prepared to meet with Institute department personnel in their facilities upon request to discuss the affirmative action program, planning for employee training, group career and educational counseling or other employee matter.

Packaging Grant

con't from p. 1

course of the seminar include the selection of color ink sets; ink laydown sequence; the gamut of printed colors; the problem of reds; and the effect of paper on printed color. Also included are discussions of color densitometry; evaluation of printed sheets; control of dot gain and trapping; how strong to print color; and standard illumination for color viewing. A review of color proofing and its relation to press printing rounds out the program.

For more information, contact William Siegfried, director of training, 464-2758.

Alford con't from p. 1



In addition to his administrative and teaching experience, Dr. Alford is nationally known as an author, lecturer, and consultant in the field of education and, from 1938 to 1941, he was a staff writer for the Seattle Times. He has also appeared as an instructor on several instructional television programs, some of which have been aired nationally.

Dr. Todd H. Bullard, Provost and Vice President of RIT, said, "Dr. Alford brings to RIT a rich background and talent in the field of continuing education. We look forward for him to not only strengthen and maintain RIT's traditional continuing education programs, but also to help think out new programs and directions."

GARC Offers New Report

The Graphic Arts Research Center has introduced a new size RIT Alphanumeric Resolution Test Object. This new resolution test pattern uses the same alphanumeric characters of RIT's smaller test object with all its "recognition" advantages. However, the new size is 11 x 11 inches which makes it suitable for the amateur and professional photographer who wants to test the resolution of his own camera equipment. Furthermore, the price of \$3.00 prepaid, which includes lens testing procedures, was intended to put the test object within easy reach of every photographer, GARC Spokesmen said.

Fine Arts To Continue Craftsman Program

RIT has received a \$1,500 grant from the National Endowment for the Arts, a federal agency in Washington, DC.

RIT will use the grant funds to continue a program known as Craftsman in Residence. The grant is matched in kind through funds from RIT. Dr. Robert H. Johnston, dean of the College of Fine and Applied Arts, expressed gratitude for the grant. "We welcome the opportunity to continue this successful program another year," he commented. "Students are benefited immeasurably through contact with these noted craftsmen."

Last year RIT used the program to bring three craftsmen to campus for a week of lectures and classes. The participants were Judy Cornell, ceramist; Jon Brooks, ceramist; and Frank Turley, blacksmith. Plans for next year are not yet finalized.

Engineers Hold Memberships

Three College of Engineering faculty members hold current offices in professional engineering societies.

Dr. Richard Reeve, associate professor of industrial engineering, is president-elect of the Rochester chapter of the American Institute of Industrial Engineers and director of education and student affairs of AIIE's Region 5.

Dr. Harvey Rhody, assistant professor of electrical engineering, is vice chairman of the Rochester section of the Institute of Electrical and Electronics Engineers' Communications Society for 1974-75.

Dr. Richard A. Kenyon, dean and professor of mechanical engineering, is chairman of the Rochester branch of the American Society of Mechanical Engineers and recent president of the Rochester Engineering Society, and has been reelected treasurer and member of the executive committee of the Association of Engineering Colleges in New York State.

Gifts

seventies and beyond."

Both gifts will become part of the permanent endowment to support all nine colleges within the Institute.

Kodak was influential in RIT's development of its packaging science program--the second established in the country. A new major in chemical technology is of special interest to the company.

Kodak is one of the leading employers of graduates from RIT's new School of Applied Sciences. More than 4,000 are alumni of RIT. In addition, 1,300 Kodak employees are enrolled in RIT evening programs.

Kodak's interest in RIT began with company founder George Eastman's support of RIT's predecessor, Mechanics Institute. Walter A. Fallon, Kodak president and chief executive officer, now serves on RIT's Board of Trustees and as co-chairman of the 150th Anniversary Campaign.

Both Kodak and Xerox have actively supported RIT's co-op program degree.

Xerox is a leading participant in the Institute's M.B.A. program with over 165 students enrolled. About 1,200 employees are alumni of the school and almost an equal number attend RIT evening programs.

Xerox also began its support of RIT during the days of Mechanics Institute. Chairman of the Board and Chief Executive Officer of the Xerox Corporation, C. Peter McColough, and Vice President/Treasurer/Secretary E. Kent Damon, are members of the RIT Board of Trustees.

Funds raised for the RIT 150th Anniversary Campaign will be used for general endowment, endowed chairs, library and instructional technologies, innovative educational development, student aid, campus improvement and supplemental operating funds, Stern said.

Packaging Grant

The grants are designed to provide "seed money" to get college-level educational programs in packaging underway to colleges and universities throughout the country, but do not include earmarked funds or equipment gifts.

Recipients of the 1974-75 grants are Cornell University, University of California at Davis, Dayton-Miami Valley Consortium, Indiana State University, Pratt Institute, Rochester Institute of Technology, Rutgers University, and University of Wisconsin-Stout.

PEF Grants Chairman Schreiber pointed out that a larger number of companies than ever before had given equipment this year in addition to their monetary contributions. He said the foundation is uniquely organized to best advise companies on what kinds of equipment packaging schools are in need of because foundation officers and directors work very closely with each school on all aspects of their packaging education programs.

con't from p. 1

con't from p. 1

NEWS & NEWS MAKERS

Dr. Robert Frisina, director of NTID and vice-president of RIT, was keynote speaker at the recent Alexander Graham Bell Association for the Deaf meeting in Atlanta....**Professor D.M. Crystal** recently returned from a 3-week National Science Foundation workshop in computer generated graphics....All Institute personnel should note that effective July 1, the rate for reimbursement for **mileage** was increased to .12 per mile.... **Prof. Boris Mikolji** of General Studies has been elected president of the Rochester Area Sociological Association....**Dr. Richard Marchand** formerly of Rivier College, New Hampshire, has been appointed to the staff of the Counseling Center....**Dr. Joseph L. Lippert** of the Chemistry department has been awarded a Cottrell College Science grant of \$6,595 for his project on Laser Raman Investigation of Configurations of Membrane Components....**Dr. Robert Lee** of the College of Engineering has been appointed to the Board of Directors of the newly created Center for Environmental Information....An article on "Task Definition and Exposition--The Catalyst in the Matching Process" by **Hollister Spencer** of the College of Business, appeared in a recent issue of the Personnel Journal.... **Wallace Library** has published "Ms., An Author and Subject Index," an index of the first years of Ms. magazine. For more information, contact **Judy Glading** at 464-2560....The **Nathaniel Rochester Society's** summer meeting was held recently in Niagara Falls....

Morrill

Dr. Terence C. Morrill, associate professor of chemistry, has revised an organic chemistry textbook for use by college chemistry seniors and graduate students.

The book is "Spectrometric Identification of Organic Compounds," Third Edition, by Robert M. Silverstein of the State College of Environmental Science and Forestry at Syracuse; Clayton G. Bassler of the Hills Brothers Coffee Company, and Morrill.

It was published by J. Wiley and Sons of New York this month.

Dr. Morrill of 211 Avalon Drive, Brighton, has a bachelor's degree from Syracuse University,

a master's degree from San Jose State University and a Ph.D. from the University of Colorado.

News and Events is published weekly during the academic year by Rochester Institute of Technology, Communications Services, 464-2330, and distributed free of charge to the Institute community.