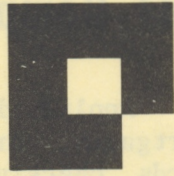


# NEWS & EVENTS



Institute  
Publications  
RIT  
COLLECTION

Dec. 15--Jan. 4, 1973

Published by Communications Services  
Rochester Institute of Technology

## Junior College Center Established

A Center for Community Junior College Relations which combines an Office of Community Junior College Articulation with master's degree programs for faculty in two-year colleges has been established at RIT.

The Center was established due to the continuously increasing number of students who have transferred to RIT from community junior colleges and technical institutes, and other four-year colleges, said Dr. Todd H. Bullard, provost and vice president for Academic Affairs. These people, who now approximate 40 percent of RIT's student population, currently come from some 222 colleges and universities in 34 states, Puerto Rico, the Virgin Islands and several foreign countries.

The new organization within RIT was announced by Bullard as one of the operations under Dean Roy I. Satre, Jr. Dr. Richard L. Rinehart is director of the Center for Community Junior College Relations. These three men have been presidents of community colleges in West Virginia, New York and Michigan, respectively. They have a combined total of 18 years of experience as presidents, and more than 20 years of experience in teaching and other administrative functions in community colleges.

Dr. David E. Hooten is the director of the newest part of the organization, the Office of Community Junior College Articulation. Dr. Hooten, who also is director of RIT's Summer Session programs, is a graduate of Indiana University and his previous experience was in teaching and as director of admissions and records at Indiana University.



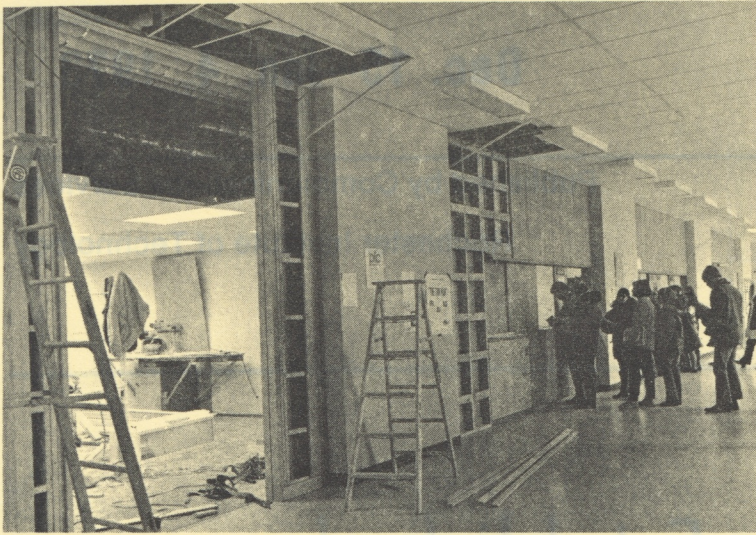
Rinehart



Hooten



--REMEMBER--  
INSTITUTE CHRISTMAS PARTY  
Friday, December 15, 8 p.m.  
COLLEGE-ALUMNI UNION



Area on first floor of administration building is being remodeled for branch of Security Trust Co.

## Security Trust Adds

### RIT Campus Branch

Applications for student loans, home mortgages, car financing, Master-Charge Cards, checking and savings accounts, in addition to over 100 other full-banking services, will soon be available to all Institute students and employees when the Southtown Security Trust Branch Office opens an RIT campus service office on Wednesday, Dec. 27.

The new banking offices will be located on the first floor of the George Eastman Building in the area previously occupied by the Institute's Check Cashing/Student Bank Service.

"Tentative banking hours will be from 9:30 to 3 p.m. on Mondays through Thursdays, and 9:30 to 5:30 on Fridays," said Donald Jenks, Southern Security Trust Company branch manager.

"This will be a full-service bank and will provide all of the banking services that are now available at our Southtown Office, with the exception of safe deposit boxes," Jenks said.

A sampling of the services will include student loans, travelers checks, higher education loans, home mortgage loan application processing, and many more.

All checks from students and RIT employees will be honored, providing that proper RIT identification is presented to the cashiers.

The Institute's Check Cashing/Student Bank Service will be discontinued, with complete phase out by Jan 31, 1973. Dec. 22 will be the final day of operation, with no deposits accepted into the Student Bank accounts after that date. Withdrawals from the Student Bank will be processed through Jan. 31. All Student Bank accounts remaining open after that date will be closed by the Institute and reimbursement checks will be mailed to the student at his or her home address.

"I'm sure all RIT students and employees will join me in welcoming the arrival of the Security Trust Company, whose expertise and full range of banking services will be of benefit to us all," said James C. Murphy, RIT Bursar.

## DSP To Sell Xmas Trees

RIT members of the Epsilon Lambda Chapter of Delta Sigma Pi, the international business fraternity, will be selling Christmas trees again this year to help finance their professional activities.

Their Christmas tree lot is at the Ballantyne Mobil Station at the corner of East River Road and Jefferson Road. It will be open from noon to 10 p.m. Dec. 6-24.

The fraternity also has donated a seven-foot tree to the Henry Lomb Room. Personnel from the food administration department decorated it.

Delta Sigma Pi has also donated trees to the American Cancer society and the Hemodialysis Unit at Monroe Community College on behalf of a faculty member of the College of Business.

## Junior College Relations, cont'd.

Dr. Bullard was president of Potomac State College, a coordinate branch of West Virginia University, from 1964 until joining RIT in 1970. Dr. Rinehart was president at Bay De Noc Community College (Michigan) and had served as a faculty member and assistant dean at the Lansing Community College.

Dr. Satre was president of the Community College of the Finger Lakes in Canandaigua, N.Y. and had prior experience as dean and professor of science at Niagara County College in New York State.

# Deaf In Area To Get Interpreting Service

A new program being set up in the Greater Rochester area is enabling the deaf to have the services of an interpreter whenever the need arises.

The community interpreter program is under the direction of Father Thomas M. Erdle, director of the 4th District of the New York State Registry of Interpreters for the Deaf, and Catholic Chaplain to the deaf at NTID and Rochester School for the Deaf.

Father Erdle's job will be to coordinate the needs of the deaf with available interpreters from NTID, the Rochester School for the Deaf, those who participated in the Community Interpreter Training Program at NTID last summer, and other members of the Registry of Interpreters for the Deaf (RID).

"The most important job will be to determine the communications needs of the deaf person requesting an interpreter, and match those needs with a qualified interpreter," says Father Erdle. In most cases, he is contacted personally by the deaf person or through a third party.

The services of interpreters are available for many situations including: all

legal actions from meeting with a lawyer to courtroom proceedings; medical situations involving appointments and consultations; hearings and meetings, both public and private; religious activities; educational classes; deaf parents who have the need to go to meetings involving their hearing children, and numerous other cases.

The goal of the program, according to Father Erdle, is "not only to supply interpreters for the many and varied needs of the growing deaf population in the Rochester area, but also to upgrade the quality of that interpreting. To this end, the RID is embarking on a program to evaluate the skills of its present interpreters."

RID feels that the services of professional interpreters is especially essential when dealing in educational and legal situations and for mass audiences such as in the case of Channel 21's News for the Deaf.

Anyone who needs the services of an interpreter or who wishes further information can contact Father Erdle at 232-2442 or through the Chaplain's office at RIT.

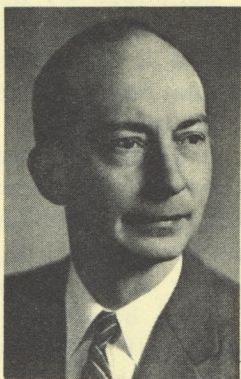
## Damon Elected

### To NRS Post

E. Kent Damon, vice president, secretary and treasurer of the Xerox Corp., has been elected the new chairman of the Nathaniel Rochester Society.

Mrs. Marcus Barbour has been elected co-chairman and Walter A. Fallon has been elected vice chairman.

The Nathaniel Rochester Society was established in 1967 to formalize and extend the close relationship of RIT with the community. Sponsored by the Board of Trustees, the Society represents a major source of leadership and financial support for the Institute.



Damon

Once again the Millers are pleased to use this medium to share our best wishes with the people of RIT.

We look forward to our fourth Christmas in Rochester, being able to exclaim how much we have come to enjoy our life and service, individually and together, both on and off the campus.

Many friends have made this joy possible --students, faculty, staff, trustees, townspeople--and we grow in our gratitude for what they share with us and for the manner in which they labor for RIT.

We and our children, and their children as well, all join in wishing for the Institute family a happy Holiday season of personal and family renewal.

Sincerely,

Paul and Francena Miller

# Snow Closing Policy Explained

This past June brought flood conditions and our fall has been frequented by rains. We'll hope the winter is easier on Rochester, but, just in case, Personnel Director Ev Merritt said the following is Institute policy:

If weather dictates an Institute closing, word will be passed via local radio stations and WITR. If a storm develops after faculty and staff have begun the day at RIT, word will be passed by phone from the Personnel Office. Offices should not close individually prior to that announcement.

## NTID Advisory

### Group Adds Five

NTID has named five representatives from business, education and the deaf community to its National Advisory Group (NAG).

As required by Public Law 89-36, which resulted in the establishment of NTID, the NAG serves in an advisory capacity to the Director of NTID.

Selected to serve on the advisory group were: Dr. June B. Miller, Robert J. Behnke, Maurice R. Forman, Lloyd A. Harrison, and Frank B. Sullivan.

Dr. Miller is the educational director of the L. B. Spake Hearing and Speech Department at the University of Kansas Medical

Behnke is vice president and treasurer of Skinner Corp. in Seattle, Wash., and former mayor and city councilman of Medina, Wash.

Forman is the chairman of the board of B. Forman Co. in Rochester, N.Y. and is a member of the Board of Trustees of both RIT and St. John Fisher College, also located in Rochester.

Harrison is superintendent of the Missouri School for the Deaf in Fulton, Mo.

Sullivan is a long time leader within the nation's deaf adult community and is president of the National Fraternal Society of the Deaf in Oak Park, Ill., an organization insuring deaf persons and their families.

All employees who are not required by their departments to work when the Institute is officially closed for a storm or emergency, will be excused and will receive regular pay for the normal hours of work that day.

Those employees who are required by their departments to work even though the Institute is officially closed for a storm or emergency, or those who might work on their own will be paid at their regular pay rate for the hours worked. If the employee reports but is excused earlier than usual, the balance of time not worked will be excused and will be paid at the employee's regular rate. Employees who do not report as required will take the time for that day as vacation or may be excused without pay if recommended by their department.

Up to two hours of lateness will be excused with pay if an employee reports but is late due to the emergency. If at all possible, an employee should notify his department that he has been delayed but will report as soon as possible.

## Briggs Gets RIT Citation

Theodore C. Briggs, business and civic leader and former Rochester city manager, received a citation for Distinguished Service from the Board of Trustees of RIT at its Nov. 20 meeting.

Briggs, a former president and board chairman of Lawyers Cooperative Publishing Company, has served as a member of RIT's Board since Nov. 8, 1927. He was named an honorary Board member in 1963.

"The Board of Trustees recognizes his 45 years of loyal and dedicated service to the Institute by the adoption of this resolution and the presentation of this Citation for Distinguished Service," the citation read.

"He made significant contributions to the Institute's growth through his membership on the Executive Committee from 1945 to 1961, and as a member of the Nominating

Cont'd. page 5



Marilyn Rosenberg of Reporter staff looks over canned goods collected by Reporter, WITR, and College Union for Christmas distribution to needy families. Food was collected at charity film showing last week.

## Transfer Scholar Awards To Be Given

RIT has announced the establishment of four new "Outstanding Transfer Scholar Awards," to be granted without regard to financial need and equivalent to full tuition for the junior and senior years at RIT--approximately \$4,500 apiece.

In making the announcement, Donald A. Hoppe, dean of admissions and records, said the new scholarships were created "to recognize scholarly achievement, and are expressly reserved for students transferring to RIT after finishing their first two years in a Community or Junior College, or equivalent college program."

To be eligible, Dean Hoppe said, students must be accepted as third year transfers by March 2, 1973, and be nominated for "Outstanding Scholar" consideration by their sending colleges. RIT faculty will determine those to be invited to the Outstanding Transfer Scholar Competition to

be held on the RIT campus on April 6 and 7, 1973.

The competition will take different formats in each different college and school within RIT, Dean Hoppe explained. The several faculty review teams within each RIT program will select a first-place nominee, whose record will be sent to a special award committee. This committee will select the four individuals who will receive the Outstanding Transfer Scholar Awards.

"All those honored by the invitation will be considered for financial aid based on need, prior academic records, recommendations and the results of the competition for those attending," Dean Hoppe said.

### Briggs, cont'd.

and the New Campus Education Committees," the citation said.



The General Electric Foundation of Bridgeport, Conn., recently presented \$34,000 to RIT President Paul Miller for the second year of program in the School of Applied Science. Left to right, Dr. Richard Zakia, director of Instructional Research and Development, Mrs. Dorothy Wadsworth, director of Development, Dr. Donald J. Watson of the G.E. Foundation, Dr. Miller, Dr. Roy I. Satre, dean of the School of Applied Science.

## Tax Rate To Increase

The Personnel Office reminds Faculty and Staff that changes in the Social Security law will affect RIT employees in 1973. As of January 1st, the tax rate paid by employees increases from 5.2% of the first \$9,000 earned annually to 5.85% of the first \$10,800 earned in 1973. This will mean a higher deduction per paycheck and over a longer period for those earning in excess of \$10,800. Institute (employer) contributions to Social Security also increase in the same amount.

## Xmas Social December 21

The professional Businesswomen's Association annual Christmas Social will be held Thursday, December 21, 1972 at 12:30 p.m. in the Multi-purpose Room of the College Union. Punch and cookies will be served, door prizes will be given away, and all members and non-members are asked to bring a \$2 grab bag gift which will be distributed by Santa Claus. A 25¢ donation is requested from non-members or they can pay 50¢ entitling them to membership for the next six months. For more information contact Judy Witzel of the College of Science.

# NEWS AND NEWSMAKERS

Dr. Boris Mikolji, associate professor in the College of General Studies, has just returned from Caracas, Venezuela, where he attended the International Sociological Congress and Inter-american Convention of Criminology....Professor Herbert J. Mossien of the College of Business has been appointed to the executive committee of the Health Council of Monroe County and elected chairman of its finance council....Dr. Hollister Spencer, professor of management in the College of Business, has published an article entitled "Designing Commitment Into the Organization" in the December issue of "Personnel Journal"....An NTID drama club film will be run on Channel 21 on Christmas Day from 6:30 to 7 p.m. in place of the News for the Deaf ....The November issue of Photo Methods for Industry has a feature article on photographic masking techniques by Larry McKnight of Media Design Center and Richard Zakia....

# EXHIBITS

MARINE MIDLAND BANK DOWNTOWN: School for American Craftsmen show, 9:30 a.m. to 3 p.m. Monday through Thursday, 9:30 a.m. to 6 p.m. Friday.

WALLACE MEMORIAL LIBRARY GALLERY: GRADUATE PAINTERS I, daily.