

N·E·W·S & E·V·E·N·T·S

Campus Cooperation Encourages Minority Students

Interdepartmental cooperation is an important factor in achieving the Institute goal of encouraging minority students to attend RIT.

The Institute notes increased efforts to enroll and recruit minority students. Although minority student enrollment has declined nationally, RIT's minority enrollment compares favorably to local college figures.

Establishment of the Frederick Douglass Scholarships and the Office of Minority Affairs was accomplished in 1982, the first year of implementing the goals of increased minority enrollment and coordination of Institute services to minority students.

A three-year affirmative action plan for RIT's nine colleges and its divisions has among its goals adding at least one minority faculty or staff member as employment needs occur.

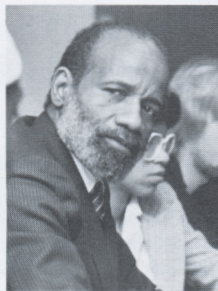
The commitment to recruiting minority students was reflected in the organizing of annual open houses at RIT for minority high school students from Buffalo and Syracuse as well as Rochester and in the awarding of the Douglass Scholarships beginning in 1982 to a total of 48 students.

The thrust during the last academic year has been towards retaining minority students and to the development of a dual degree program that extends RIT's professional career programs to students of colleges belonging to the Atlanta University Center.

To encourage minority students to remain at RIT, Cynthia McGill, director of the Office of Minority Affairs, organized an RIT seminar that addressed the academic and cultural characteristics of minority students and developed retention strategies.



Cynthia McGill



Lerone Bennett, Jr.



Tony Morrison



Ralph Abernathy

Another seminar on racial awareness was conducted for administrators, faculty and staff by Minority Affairs, the Personnel Office and the Counseling Center.

Last fall, for the first time, a minority student orientation was part of the Institute's Fall Orientation Program.

In 1983 RIT received an award from the Standing Committee on Blacks in Higher

Education for expanding multiracial and multicultural awareness in its campus community.

The Minority Affairs Office, which sponsors informal rap sessions for students and staff, serves as a center for planning Institute-wide events that bring notable black and minority speakers to campus. The annual Martin Luther King, Jr., Mem-

orial Observance is a joint project of the office, the College of Liberal Arts and several Student Affairs departments.

Dr. Ralph D. Abernathy and Mrs. Whitney Young, Jr., are the most recent visitors. Others have been Lerone Bennett, Jr., senior editor of *Ebony*, and Gil Noble, award-winning New York City television producer, as well as novelist Toni Morrison and actress Ruby Dee.

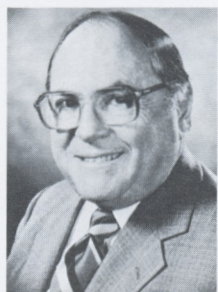
Dr. Paul Bernstein, dean of Graduate Studies, is coordinator of the dual degree program with the Atlanta University Center, the largest consortium of black, private, higher education institutions in the nation. The center includes four historically black colleges: Clark College, Morehouse College, Morris Brown College and Spelman College.

This dual degree program at first will be limited to engineering and computer science and technology but may be expanded to other disciplines taught at RIT. Scholarship support for five students has been arranged.

"Although our federal government's philosophy does not actively support efforts to recruit and retain minority students in colleges and universities, Institute philosophy embraces this goal," McGill noted.

She also pointed out the informal group, The Ethnic Faculty and Staff, whose members make themselves available as advisors and "listeners" to minority students. Minority students, once they are on campus, also have access to the support services of the Institute's Higher Education Opportunity Program and Special Services.

RIT Board Names Two Trustees



Burton S. August

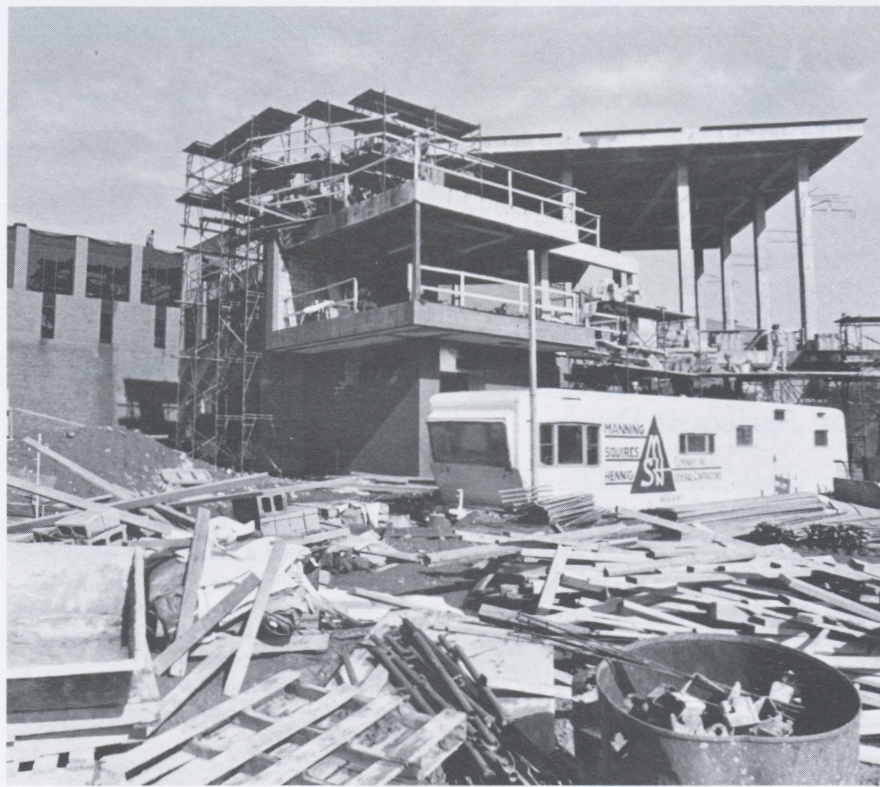
Burton S. August, retired vice president and director of *Monro Muffler Brake Inc.*, was elected to RIT's Board of Trustees at the Board's July meeting. He is a former senior vice president and director of *Michaels Stern and Co. Inc.*

August is vice chairman of RIT's *Nathaniel Rochester Society*; chairman of the Executive Board of *United Way of New York State*; a member of three committees of the local *United Way*; a trustee of *Park Ridge Hospital*, the *Margaret Woodbury Strong Museum*, *Park Ridge Nursing Home* and *Park Ridge Health System*; and a board member of *Rochester Area Hospital Corp.*, *Genesee Regional Home Care Association* and the *Rochester Automobile Club*.

Active in *Boy Scouts* his entire life, August is currently a member of the *Oteti-ana Council Senior Advisory Board*, the *Northeast Region Executive Board* and the *Troop 31 committee*.

At the same meeting, *John E. Schubert*, a member of RIT's Board of Trustees since 1968, was appointed an *Honorary Member of the Board*. He is a former president, chairman and chief executive officer of *The Community Savings Bank in Rochester*.

Schubert has been a very active member of the Board, serving on the *Executive, Finance, Endowment, Personnel and Buildings and Grounds Committees*.



NEARING COMPLETION... Looking almost ready for occupancy are the chaplains' offices in RIT's Killian J. and Caroline F. Schmitt Interfaith Center (top, left). Construction on the rest of the Interfaith Center has not progressed as well as a strike by glass workers has delayed construction of the center. Scheduled to be completed by Sept. 1, RIT's new religious center is now expected to be finished by mid-September. Sister Shirley Pilot, director of *Campus Ministries*, said that although the glaziers have settled their work contract, "I don't know their schedule for continuing work on our building." The center will have two bronzed glass walls enclosing the meditation chapel on the lower level. Dedication ceremonies have been rescheduled from Sept. 13 to Nov. 2, the beginning of *Parents' Weekend*.

IGAEA Conference Brings Educators

Nearly 200 members of the *International Graphic Arts Education Association (IGAEA)* and their families are at RIT this week for the group's 59th annual conference.

The main attraction of the conference has been the week-long speakers series, which has brought representatives from *USA Today*, *Xerox Corporation*, *Eastman Kodak*, *Diamond Packaging*, *Diconix* and other major corporations to speak on topics of interest to the educators.

IGAEA, an international organization of teachers of graphics arts, is dedicated to improving graphic arts education for the benefit of students. Its members are primarily teachers in high schools and junior colleges, although universities and industry are also represented in their membership.

In addition to the speakers series, there is a series of workshops where IGAEA members can use the advanced facilities available at RIT. "We feel that by having this conference at RIT, members will see a wide variety of graphic arts equipment and the range of employment possibilities open to their students," says *Harry Rab*, assistant professor in RIT's *School of Printing and IGAEA's 1984 conference chairman*.

The families of attendees have not been forgotten. Programs for spouses/guests and children have included trips to *Sonnenburg Gardens*, *Batavia Downs*, *Darian Lake*, picnics and miniature golf.

"The Rochester area has been very supportive of our efforts to provide a strong recreation program," says *Janet Kurdin*, an RIT student who is assisting Rab in the conference coordination. "Many of the events we are offering would not have been possible without the assistance of so many cultural and recreational groups."

Agreement Lowers Costs

Through an agreement between RIT and Digital Equipment Corporation (DEC), an Information Systems and Computing (ISC) Equipment Service Center has been established on campus. The new service center will be in operation after Sept. 10, and will provide maintenance for DEC personal computers, DEC terminals, GIGI terminals, Barco monitors and associated peripheral equipment.

The service center, which will be managed by Robert C. Weeks, Jr., assistant director for User Services, is located at the brown building on the east side of the Ross Memorial Building (Building 10).

"Having the center located on campus is a great convenience to DEC equipment users," says Ronald Stappenbeck, associate director for Academic Computing and User Services.

According to Stappenbeck, a major benefit of the agreement is the substantial discounts in annual service contract prices, compared to DEC's normal carry-in rates. The agreement could save RIT contract purchasers more than an aggregate \$64,000 annually, based on current DEC micro-computer sales and rates.

A typical service contract for a Rainbow configuration including the basic system unit, dual diskette drives, keyboard, and monochrome monitor costs \$216 compared to \$276. A Professional 350 system service

contract is \$324, normally \$528. A DECmate II contract costs \$276 reduced from \$516. Comparable discounts are available for associated peripheral equipment.

Another advantage of the agreement is the distribution from the service center of DEC personal computer operating systems and documentation updates to service contract purchasers.

Until the service center is in operation, users can bring their equipment to the User Services Office in the Ross Building, Room A-340. Equipment will be repaired under the basic warranty, purchased service contract or on a time and materials basis.

For more information about the ISC Equipment Service Center, contact Weeks at 6970.

Campus Branch Bank to Close

Security Trust Company will be closing its branch in the George Eastman Memorial Building on the RIT campus after 12 years of providing financial services to the RIT community. The closing is scheduled for around Friday, December 21.

According to RIT Controller William Welch, "RIT is now in the process of contacting other banks to see if there is an interest in opening a branch on the campus and/or installing automatic teller machines."

"We will also be working closely with Dr. Barry Culhane, assistant vice president for Campus Life, to make sure the students as well as the entire RIT community receive the best service available."

The decision by Security Trust to close the RIT branch was based primarily on its limited growth potential due to its location. Bank officials concluded that they could best serve the bank's customers through the services offered at the bank's other branches.

"Current customers have a readily accessible banking location at Southtown Plaza, less than a mile away from campus," says Mosie Hannah, senior vice president and manager, Rochester Region, Security Trust company. "Many RIT students, faculty and staff are already Southtown customers. We will make every effort to continue to serve the college community well at that location."

Ask CCE About Continuing Ed

If you have the questions, continuing education staff members have the answers.

College of Continuing Education faculty and staff will be on hand next Tuesday, Aug. 14, for a prospective student orientation for evening students. They will be joined by representatives from other RIT colleges and departments to answer questions on course offerings and degree-levels.

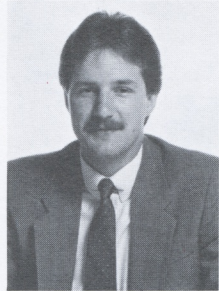
The orientation meeting will take place at 7 p.m. in the Max Lowenthal Memorial Building (Bldg. 12).

RIT employees as well as community members are invited to the session. Full or partial tuition waivers for credit courses are a benefit available to most permanent Institute employees and to members of their immediate families.

Representatives from the College of Continuing Education will discuss technical programs in electrical and mechanical technology, computers, chemistry, photography, printing and machine tool technology; humanistic studies toward the associate of arts degree and in fine and applied arts and deaf studies as well as general education requirements for the college, and business and management programs such as the management process certificate program.

Other colleges represented at the orientation meeting will be the College of Applied Science and Technology whose representatives will discuss programs leading to the bachelor of technology degree in engineering technology; the College of Engineering whose staff will explain the college's extended day program; the College of Liberal Arts whose representatives will advise on elective courses offered through other colleges, and the College of Business whose representatives will talk about bachelor's degree programs.

RIT's graduate programs office personnel will explain graduate evening program requirements for career and human resource development, instructional technology, computer science and computer systems management, information science, packaging, science, statistics, electrical, mechanical and materials science engineering, chemistry, clinical chemistry and materials science and engineering.



Edward Lincoln

CFAA Names Lincoln New Assistant Dean

Edward Lincoln, formerly assistant director of admissions at RIT, has been appointed assistant dean in the College of Fine and Applied Arts.

In naming Lincoln to the position, Dr. Robert H. Johnston, dean of the College of Fine and Applied Arts, said, "We're delighted to have Ed Lincoln join us. As a former recruiting officer in Admissions for the College of Fine and Applied Arts, he is knowledgeable about the college, and as a graduate of Eisenhower College, he brings a broad background that will be useful to him in the role of assistant dean. He is dedicated, hardworking and interested in students."

Lincoln came to RIT as an admissions counselor in 1979 and was promoted to assistant director of admissions in 1982. Lincoln had admissions experience as a student at the former Eisenhower College where he was a senior class president and served as a tour guide.

His new duties include academic advising and problem-solving for all College of Fine and Applied Arts undergraduate students.



RECOGNIZED FOR HIS CONTRIBUTIONS... Dr. Robert Frisina (right), RIT vice president and secretary of the Institute, receives the Regents Medal of Excellence from New York State Board of Regents Chancellor Willard A. Genrich (center). At left is Regent Emyln I. Griffith of Judicial District #5. Frisina was recognized by the Regents for his outstanding contributions on behalf of disabled individuals. His medal was presented at a special ceremony, July 18, which was part of the Regent's bicentennial celebration. A program with the theme, "New York: Commitment to the Disabled," was included in the ceremony.

RIT Fine Arts, Crafts at Gallery Exhibit Make Impressive Showing

The numbers are impressive.

College of Fine and Applied Arts students, faculty and alumni supplied 36 of the 112 exhibiting artists and won 12 of the 22 prizes, including all the high money awards, in the Memorial Art Gallery's 1984 Finger Lakes Exhibition.

Graduate student Elizabeth Coyne received the juried show's top award with a \$1,000 cash prize, alumna Juliana Furlong Williams won the G.M. DuBois/Blair Advertising, Inc. Award of \$400 and graduate student Karen Sardisco received the \$300 Light Impressions Award.

Alumnus Peter Berg won two awards, the Rumrill-Hoyt Popular Award of \$300 and the Sybron Corporation Award of Excellence, \$250.

Other prize winners were faculty member Judd Williams; students Edgar A. Brown

and Concetta Mason, and alumni Nancy Jurs Castle, Miriam Sellers Lapham, Kristin Carlsen Rowley and Robert Harper.

Other RIT artists exhibiting included faculty members Harry Bliss, Kener Bond, Philip Bornarth, Max Lenderman, Joyce Shikowitz, Michael Taylor, Frances Welles and School of Photographic Arts and Sciences faculty member Charles Arnold, Jr.; students Bruce Chapin, Sr. Anne de Mare, Donna DePalma, Judite Dos Santos, Jan Jacque, Kenneth Louie, Tony Petracca, Mary Porter and Felix Zapata; alumni Marian Haley Beil, Phyllis Bryce-Sattler, Sharon Dwyer Buzard, Kristin Carlsen Rowley, Deborah J. Felix, Mary Gordon, Anthony Hays Grotto, and John Schipper.

Work by Biomedical Department Makes BPA Meeting an RIT Event

Forty-five RIT alumni, students and faculty members attended the 54th annual international meeting of the Biological Photographic Association (BPA) in June. They presented a grand total of 10 papers and 3 workshops, and they received 14 high awards, including best-of-show in color photomicrography.

A highlight of the meeting was a nine projector multi-media production commissioned by the BPA and produced by RIT alumni Frank Grubbs, James Fosse and Maria Schuchardt. "The ten minute production received a standing ovation from the audience of more than 800 people," said Nile Root, associate professor and coordinator of the biomedical photographic communications program.

RIT alumni from all parts of the United States and from as far away as Israel attended the five day event.

Faculty, student and alumni work was displayed at the exhibit of scientific photography shown during the meeting. Elizabeth Peterson, a student in the biomedical photographic communications program received three awards: the Charles Foster Memorial Citation for best of show, the award for the best single print by a full-time student, and first award for a color photomicrographic print.

Other students who won awards are: Kent Loeffler, two honorable mentions; Robert Werberig and Harry Rosa, second-place awards, and Shari Rake, honorable mention. Nile Root also won an honorable mention award.

Professor Emeritus Hadsinskyj Dies

Funeral services were held yesterday for Mykola Hadsinskyj, 83, professor emeritus of the College of Science.

Hadsinskyj taught physics at RIT from 1955 to 1972 when he was named professor emeritus.

A graduate of the University of Kiev in 1923 and the University of Odessa in 1925, he was granted the equivalent of a master's degree in 1940 from the University of Charkov. He headed the department of physics at the Biological Institute at the University of Charkov from 1932 to 1940.

After coming to the United States in 1950, Mr. Hadsinskyj devoted much of his time in working for Ukrainian relief and in involvement with Rochester's Unkranian-American community.

He was a member of the American Institute of Physics and the Smithsonian Institute.

Hadsinskyj, who died Saturday, is survived by his wife, Helen.

Alice Cooke Randall Celebrates 100th

Alice Cooke Randall, who was the wife of former RIT President John A. Randall, turned 100 years-old June 28.

She celebrated her centennial quietly at a family dinner with her two daughters and their husbands.

Like Mrs. Randall, one of her daughters is the wife of an RIT president. Marcia Randall Ellingson's husband is Dr. Mark Ellingson, president of the Institute from 1936 to 1969. Dr. Ellingson succeeded his father-in-law, who from 1922 to 1936 was president of the Institute's predecessor, the Rochester Athenaeum and Mechanics Institute.

According to the new history of RIT, Colonel Randall "was the first of three presidents whose years in office made the Institute what it is today." The others are Dr. Ellingson and Dr. Paul A. Miller, president from 1969 to 1979.

Distinctive as it is to be the wife of a university president, Mrs. Randall had accomplishments of her own.

She was an honors graduate in 1906 of Wesleyan University, Middletown, Conn., where she was elected to Phi Beta Kappa, the liberal arts honor society. Wesleyan, a



Alice Cooke Randall

coeducational institution from 1872 to 1912, was then the only college in Connecticut that admitted women. Mrs. Randall

worked with those who founded the Connecticut College for Women, which today is a coeducational institution.

Until her marriage to Colonel Randall, who was also a Wesleyan graduate, she taught school in New England. In Rochester, she was a leader in Girl Scouts and was involved in social work at Highland Hospital and through Monroe County Aid to Dependent Children.

Mrs. Randall lived with the Ellingsons for many years until 1980 when she moved to a nursing home near Philadelphia. There another daughter, Dr. Shirley A. Morley, and her husband, Dr. Robert R. Morley, care for her. A third daughter, Jean Randall Smith, died in 1968. Mrs. Randall has 11 grandchildren and 17 great grandchildren.

Support Committee Plans NTID Tour

The RIT Support Staff Advisory Committee is offering a tour of RIT's Lyndon Baines Johnson Building (Bldg. 60), which houses the National Technical Institute for the Deaf, 10 to 11:15 a.m. on Thursday, Aug. 16.

To register for the tour, contact Jeanette Tydings at NTID, 6478. Because there is a limit of 25 participants, support staff interested in the tour should register early. Tydings said that a waiting list will be kept and that another tour will be scheduled if demand exceeds space available.

If, after registering for the tour, participants find it necessary to cancel, they are asked to notify Tydings so that she can accommodate someone from the waiting list.

The Support Staff Advisory Board will appreciate feedback after the tour.



Library Announces Weekend Closings

Although you will find RIT's Wallace Memorial Library open this weekend, for the three following weekends the library will be closed.

The library will close at 4:30 p.m. on Aug. 17, 24 and 31. It will open at 8:30 a.m. the following Mondays with the exception of September 2, which is Labor Day. The Library will open after that weekend on Tuesday, Sept. 3, at 8:30 a.m.

Billing Statements Mailed by Bursar

The bursar has mailed pre-billing statements to matriculated day college students based on their pre-registration requests. Student class schedules will be mailed to each student's permanent address during the week of Aug. 13.

Quarterly payments are due to the bursar by Wednesday, Aug. 15. Confirmations or second bills will be mailed by the bursar on Friday, Aug. 24.

Open registration for new day students will be held on Wednesday, Sept. 5. Open registration for returning students will be held on Thursday, Sept. 6.

Development Reports Successful Fund Raising in 1983-84 Year

The end of the Institute's fiscal year on June 30, marked the end of a successful year for RIT's Office of Development. The office reports measurable success in terms of an overall increase in funds raised and in the establishment of new programs.

The amount of total funds raised increased 9.3 percent during the 1983-84 fiscal year to \$8.3 million.

Total endowment funds increased by nearly 55 percent to \$1.5 million with gifts for the endowment of professorships and lectureships up 74 percent. Overall scholarship support increased 4.2 percent; annual scholarship support increased 14.4 percent. The addition of \$502,700 to endowed scholarships during the year brings the total principal to \$6.8 million.

There was a 19.5 percent increase in the amount of money contributed by first-time donors.

Alumni support continued to grow significantly when for the first time more than 20 percent of all Institute alumni participating in the annual fund. Cracking the 20 percent participation figure resulted in a 9.1

percent increase in the number of donors; an 18 percent increase in the total amount donated to the Institute, and an 8.2 percent increase in the average individual gift.

Increased participation by alumni, parents and friends of RIT resulted in matching gifts totaling \$102,348, a 44.7 percent increase over last year.

Some of the major highlights of the 1983-84 fiscal year were:

- Completion of the Interfaith Center fund raising program
- Creation of a Real Estate Acquisition Program
- Donation of \$1.5 million in equipment by 14 companies to renovate RIT's newspaper production laboratory
- Contribution of \$294,000 by the Farrel Division, USM Corporation, to endow the Arthur H. Ingle Scholarship Fund
- Membership by Texas Instruments in RIT's Microelectronic Engineering Affiliates Program with a \$150,000 pledge
- Contribution from the GCA Corporation of a Wafer Trac machine, valued at \$172,000, to the microelectronic laboratory.
- Contribution of \$179,000 from the former Munsell Foundation to establish the Munsell Color Science Laboratory at RIT.
- Pledge of \$110,000 by Herbert W. Vandenburg to endow the Herbert W. Vandenburg Entrepreneurial Award in the College of Business
- Increase in donations to RIT's Telefund program by more than \$68,000 to a total of \$311,934 from alumni in parents
- Membership in the Nathaniel Rochester society increased by 55, bringing the Society's membership to 394.

Bookstore Buys Textbooks Back

The RIT Bookstore has announced buy-back hours for summer quarter.

Today and tomorrow, from 8:30 a.m. to 4 p.m., and on Monday, from 3:30 to 6:30 p.m., students can sell their textbooks back to the bookstore.

Retired Prof Dies

Former RIT faculty member, Col. Clayton E. Hughes, USAF (Ret.), died in June in Ashland, Va. Hughes had moved to Ashland two years ago.

He taught political science and psychology at RIT from 1959 to 1972 following his retirement from the U.S. Air Force.



SUITED UP... Dr. Robert H. Johnston, dean of the College of Fine and Applied Arts, recently spent four days at Fort Bragg, N.C., where he "drove a tank, fired a cannon and rode in a helicopter without sides". Johnston says, "I'm impressed with the quality of young people in the military and the quality of people training them. I'm even more excited about having an officer corps of civilians, officers coming out of ROTC." A former Marine, Johnston has served on the advisory board of RIT's ROTC unit. While at Fort Bragg, Johnston met RIT cadets attending the ROTC advanced camp.



PLANNING THEIR AGENDA... Gathering before a luncheon meeting with President M. Richard Rose are the 1984-85 Faculty Council officers (from left, seated) vice chairperson, Laura Cann, Counseling Center, and operations officer, Larry Scott, NTID; and (from left, standing) chairperson, Charles W. Haines, College of Engineering; communications officer, Mary Pizzente, Learning Development Center, and treasurer, Hugh Fox, School of Printing. Faculty Council officers have met throughout the summer developing a plan of work that includes working closely with Policy Council and the Student Directorate, according to Haines.

Turn in Gym Locks, Towels for Refunds

Tomorrow at 3 p.m. is the deadline for cleaning out gym lockers for summer quarter. There will be no refunds from the Bursar's Office after 3 p.m. tomorrow.

To obtain your refund, bring your towel and lock to the Recreation Office by 3:30 p.m. today, or between 9:30 and 11:30 a.m. or 1 to 3 p.m. tomorrow.

The Physical Education Department is not responsible for items left in lockers.

NEWSMAKERS

- **Harry De Puy**, Learning Development Center, has had an article accepted by *Cahiers Victorians et Edouardiens*, a literary journal published by Universite Paul Valery in France. The title of the article is "American Prisons: A Tale of Two Cities." De Puy also wrote an article, "The Origin of the Olympic Games," for the July issue of *Rochester Women*.
- **JoAnne Sandler**, Learning Development Center, presented a workshop entitled "Communications" to high school students as part of a four-day leadership Conference sponsored by the American Red Cross.
- **Norman Williams**, associate professor and chairman of foundation studies in the College of Fine and Applied Arts, is exhibiting his photographic landscapes in the Link Gallery at the Rochester City Hall, 30 Church St., through Aug. 20.
- **Dr. Frederic P. Gardner**, associate dean of the College of Continuing Education, wrote

"Why It's so Hard to Give Money Away: Leadership and Decision-Making in Foundations," published in *Sociology in Action*.

- **Susan Rogers** has been appointed coordinator of Telecourse Delivery Systems in Instructional Media Services.
- **Sue Habbersett**, senior placement counselor, The Center for Cooperative Education and Career Services, recently represented RIT at the spring Development Conference of the Eastern College Personnel Officers (ECPO), the northeastern regional organization of the College Placement Council. Habbersett served on the publicity committee for this conference.
- **Beverly Cudney**, assistant director for Student Services, The Center for Cooperative Education and Career Services, led a workshop session, "Facilitating Co-op Student Preparation Through Administrative Structure," at the recent American Society for Engineering Education (ASEE) conference in Salt Lake City. Cudney's

workshop was attended by co-op directors from academia, industry and government.

- **Dr. Barry Culhane**, assistant vice president for Campus Life, Student Affairs Division, has been named to the board of editors of the *Journal of Visual Verbal Linguistics* and to the board of the National Association of Student Personnel Administrators (NASPA) publication, the *NASPA Journal*.
- **Dr. Jack Amos** joins the Counseling Center effective Aug. 15 as a counselor. Amos had served as a counseling psychologist at the University of Missouri.
- **Dr. Bruce A. Austin**, associate professor, College of Liberal Arts, is the author of "Attitudes Toward Movies Among College Students: A Literature Review and Case Study," published in the May, 1984, issue of *Media Information Australia*.
- **Ronald Stappenbeck**, associate director of Academic Computing and User Services, Infor-

mation Systems and Computing, and **Dr. Harvey Rhody**, professor, College of Engineering, presented their paper, "Implementing, Testing and Using Ethernet in an Educational Computing Environment," at the Digital Equipment Corporation Users Society (DECUS) in Cincinnati recently. The paper will be published in the DECUS proceedings later this year.

- **Dr. Richard Harris**, director of External Program Development, College of Continuing Education, led a two-week tour to Bristol, United Kingdom, in July. He conducted the tour in cooperation with the University of New Hampshire.
- **Dr. Robert Frisina**, RIT vice president and secretary of the Institute, delivered the keynote address, "A View from the Outside," at the Texas conference, Education for the Deaf, in Dallas this week.

PERSONNEL UPDATE

RIT's Personnel Office would like you to be aware of the following changes in your CREF/TIAA retirement benefits:

CREF's Investment Experience

CREF's investment objective is to achieve total returns — market value changes plus dividends — that are better than those of the U.S. stock market over the long run, without varying significantly from overall market returns year by year. Its approach is to keep most of its domestic holdings tied closely to overall stock market experience in this country and to seek better-than-average returns through more active management of the rest of its domestic stocks and through its international investments.

The table below shows CREF's most recent month-end investment results in comparison to the S&P 500 Equivalent — the S&P 500 modified to reflect the costs of operating an actual fund the size of CREF — for one-, three-, five-, and 10-year periods, and since CREF was established in 1952.

Compound Annual Net Total Investment Returns for Periods Ending May 31, 1984

	CREF	S&P 500 Equivalent
1 year	-2.4%	-3.4%
3 years	10.4	9.5
5 years	14.2	14.1
10 years	10.7	10.6
Since July 1, 1952 (CREF's inception)	9.2	9.3

The CREF Accumulation Unit Value for the month of May is \$60.81. For the latest month-end value of the accumulation unit, please call toll-free 800-223-1290 (in New York State, 800-

522-5622). The recorded message quotes the previous month-end value of the accumulation unit and the percentage change in this value as of the previous business day.

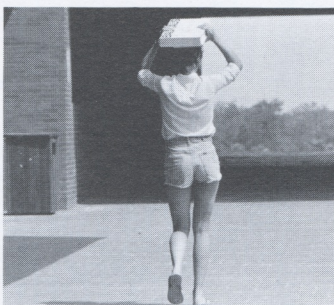
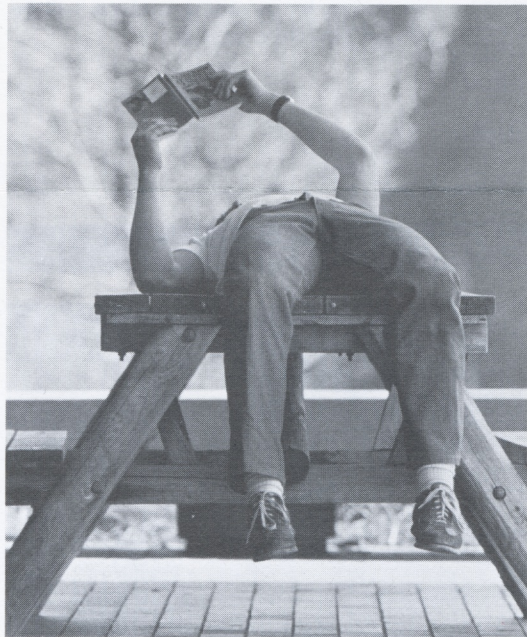
Age 55 requirement eliminated

Effective June 1, 1984, TIAA & CREF eliminated the requirement that participants be age 55 or older in order to exercise either the CREF Transfer-to-TIAA Option or the Retirement Transition Benefit. **Participants may now transfer all or part of their CREF accumulation to TIAA at any age as often as once a month, provided they transfer at least \$1,000. And now, the Retirement Transition Benefit allows participants to receive up to 10% of their annuity accumulations in a lump sum regardless of their age at the time annuity income starts.**

Although the elimination of the age-55 requirement for the CREF-to-TIAA transfer provides participants with increased flexibility, exercising the option requires careful thought. A participant needs to know the level of common stock prices when making a transfer because the participant is in effect selling common stocks at a given market value. Since there is an element of "market timing" involved in the decision to transfer there is also an element of risk for participants who exercise a transfer.

A recently revised booklet, *Some Thoughts About the CREF Transfer-to-TIAA Option* is available for distribution to plan participants who want to know more about this option. The booklet is a composite of comments gathered from TIAA-CREF correspondence and conversations with CREF participants who have inquired about the transfer option.

Summer



AH, SUMMER... RIT students relax on campus during breaks in their studies during summer quarter. Some still manage to take their books along or to find unique study positions. Summer quarter classes ended this week and finals are over tomorrow.

N·E·W·S & E·V·E·N·T·S

Non-Profit Org.
U.S. Postage
PAID
Permit 626
Rochester, N.Y.

Rochester Institute of Technology

One Lomb Memorial Drive
Post Office Box 9887
Rochester, NY 14623

