

Happy Thanksgiving





Reporter

Gregory to headline 'new era' of RIT student entertainment

by David G. Gregory

Toys needed for Christmas party

Students are asked to donate toys for the Dorm Council Christmas party to be held Dec. 11 in Nathaniel Rochester Hall.

The toys will be given to children of St. Joseph's Villa. Donations may be left with Terry Gills (Pr 2), 728 NRH, "Reb" Broome (Photo 3), 719 NRH, or at the desk in NRH.

The children, 12 and under will be treated to cake and ice cream, a cartoon show, and a visit from Santa. There will also be a tour of the floors to see the decorations.

Thanksgiving vacation should afford an opportunity for students to gather toys.

Political campaigns are built upon promises, each party generally offering to rectify, ratify, and revolutionize the present course of events.

The campaign waged last year for president and vice president of the Student Association was no different. There is one point, however, that did differ. Dave Rylance, President of Student Association and Ray Baker, Vice President, have kept one of their major promises. They promised the student body bigger and better campus entertainment, and on February 27, this promise will be fulfilled.

The Eastman Theater will be the scene of Student Association sponsored entertainment which will include comedian Dick Gregory, the folk group, the Bitter-end Singers, and the jazz group of Oscar Brown Jr.

All three of these important

names in show business will be featured on the same bill Sunday night, Feb. 27, and the event will be for RIT students and the city of Rochester.

Doug Rose, Social Chairman of the Student Association, has arranged for the entertainment working closely with Dr. James B. Campbell, Vice President of Student Personnel Services. Rose commented, "Big name entertainment is long overdue on the RIT campus, and we hope to extend to students the privilege of enjoying quality entertainment for a change."

Ray Baker, acting as spokesman for the Student Association, said, "RIT is experiencing a period of elevation, as reflected by higher aca- (Continued on page 7)

Stan Morse, Joan Markham will direct freshman council

Stan Morse (Pr 1) and Joan Markham (Med Tech 1) will lead Freshman Council as president and vice

president for the year. Treasurer and secretary are Dave Lampf and Nancy Jane Eisen. The elections were held on Nov. 10.

The new officers will be installed by Student Association President Dave Rylance on Thursday, Dec. 2 at the Student Activities Center.

Last year's president, Renn Dodd, said of the new officers, "We will see a lot of political action out of this group this year." The Student Activities Board gave the officers-elect a vote of confidence by raising their budget \$50. Among the programs planned for the coming year are a Beer Blast, Formal Dance and a Parents' Cocktail Party on Spring Weekend. The Council is planning an all-out drive to clean up the Richford Hotel. President-elect Morse is emphatic in his concern for the residents of the Richford.



Stan Morse

Assembly planned for Thanksgiving

A Thanksgiving assembly will be held in the Ritter-Clark gym at 1 p.m. Tuesday, Nov. 23, for all RIT students.

Canon David Edman, Father Hohman, Rabbi Joseph Levine, a member of the RIT administration, a representative of the freshman class, and the Choraliers will take part in the hour service. The clergy will speak on the subject "Thanksgiving '65—Want and Plenty."

Open house and dance slated for NRH tonight

Tonight an Open House and dance will be held in the lobby and the Pioneer Room of Nathaniel Rochester Hall. Dancing to the music of the Angry Man will provide a backdrop for the main event of the evening, a "Go-Go" contest for all to enter. Dancing in a cage above the lobby, contestants will be judged by members of the faculty and Dorm council.



DAVE RYLANCE (center) and Ray Baker (right) present over 600 Christmas cards to representatives of the Army and Air Force. The cards will be sent to soldiers overseas.

Yule cards collected for soldiers overseas

A member of each branch of the armed forces was on campus Tuesday, Nov. 16, to receive Christmas cards and letters from RIT students to soldiers in Viet Nam.

Over 600 cards and letters were picked up to be distributed to U.S. soldiers overseas as RIT students demonstrated their support of Viet Nam policy. The Student Association, headed by David Rylance, president, and James Totten, director of

campus affairs, sponsored the mail drop.

Some organizations sent packages of cookies to the troops. The mail will (Continued on page 7)

Social fraternity in planning stage

Triangle, a new national social fraternity backed by a number of alumni, is working its way onto the RIT campus. It was announced by Bob Brockheizen (Elec 4) at the past meeting of Student Senate that the fraternity will be open to all science students with a GPA of at least 2.36.

A resolution dealing with the \$10 "cut" fine was passed after it was pointed out that research showed it was neither wanted nor needed. Senators Stan Richmond (Pr 4) and John Kenney (Ret 3) who presented the bill hope that preliminary action can be finished in time for the fine to be dropped before the Thanksgiving Recess.

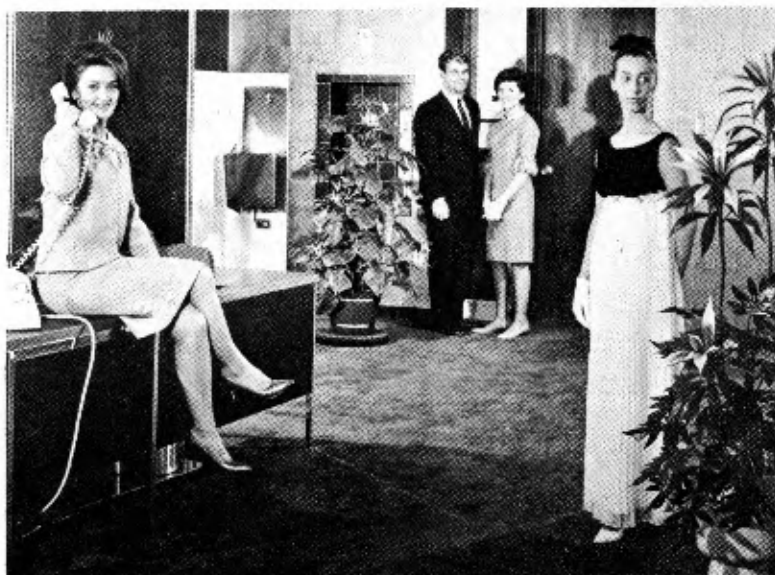
Appointed to Student Court were John Patterson (Chem 4), Ralph Atkins (Pr 3), Jill Cantor (SAC 4) and Ed Leederer (Pr 4). They have already started studying case histories (Continued on page 7)

Queens to model fashions in RIT's 'Prelude to a Holiday'

Alpha Xi Delta sorority will present its sixth annual "Prelude to a Holiday" fashion show on Monday, Nov. 22. McCurdy's of Rochester will sponsor the show which will begin at 8:15 p.m. in the Ritter-Clark gym. Dorothy Kerman (Ret 4), chairman for the event, will be assisted by Jo Ann Jackson (Ret 3) in presenting the function. Fashions will be modeled by members of RIT sororities and fraternities, and clothing will reflect the coming festive holiday season. Attire for travel, evening, and sport will be on display.

During the intermission, there will be a drawing for a stereo phonograph and other door prizes. In addition, the intermission will highlight fashions of other eras as modeled by members of the faculty and administration. Participating in this part of the show will be Dr. James B. Campbell, Vice President of Personnel Services; Prof. Ralph Burkholder of the School of Retailing, Miss Kay Hartfelder, School of Retailing, and Mrs. Lillyan Foose, secretary in the School of Retailing.

Featured in the show's finale will be the campus queens of '64-65, who will be elegantly dressed in long evening gowns. They will include Cheryl Jones, Tau Epsilon Phi; Lorrie Catallo Canzano, Sigma Pi; Susan Banks, Phi Sigma Kappa; Susan Droste, Phi Kappa Tau; Dottie Kerman, Theta Xi; Kathy Mullady, Winter Sports Queen, Sally Green, Homecoming Queen and Susan Grey, Miss RIT.



DOTTIE KERMAN, Tom Champion, Kathy Collins, and Jane Wilkinson model some of the clothes to be seen in Alpha Xi Delta's Sixth Annual Fashion Show. (Gregory)

Reporter issue composed on Fotosetter machine

Composition for this issue of your RIT Reporter was set on an Intertype Fotosetter in the photocomposition laboratories of the School of Printing. News and editorial content is set in 9 and 11 point Baskerville. Headlines and captions for photographs were set in Futura Demi-bold.

The Fotosetter is a mechanically operated device similar in appearance to an Intertype linecasting machine. The four-magazine Fotosetter has a range of 3 to 72 point producing right-reading positive images on photographic film or paper. It is a product of the Harris-Intertype Corp.

editorials

ROCHESTER INSTITUTE OF TECHNOLOGY

ALMA MATER

Music by Frank Clement

Words by Robert Koch

En - vi - sionem in fronscepis du - man-dam map of knowledge, Our
 Stultice and firm fel - low-ship have sprung from this oh du - vdr. To
 pi - u - ners with mind and hand cre - a - ted here our col - lege. Fine. The
 in - stitute then grew in time, tech - no - lo - gy and learn - ing. Our
 source and in spir - it - u - tis now. She asks bold deeds and yearn - ing. Great
 As -

is change desired?

Student Senate is presently considering what to do about our alma mater. Unlike most of the students on campus, they were able to find a copy of it.

It can be safely stated that most of the students at RIT are relatively oblivious to the existence of RIT's alma maer. It does exist, however, thanks to Robert Koch and Frank Clement, both of our College of General Studies. Mr. Koch wrote the words while Mr. Clement composed the music.

Our student government is looking into the possibility of changing the alma mater. The *Reporter* takes this opportunity to display a copy of the student body, and urges comment in the form of letters to the editor concerning the merit of the work.

lights out and all's well

Tuesday, Nov. 9, the lights dimmed and then died for over three hours. From first reports no one could know what the trouble was nor how long the lights would be out. But during these three hours RIT's student body performed in a manner that the *Reporter* can express only as, "Well done."

Within minutes after the lights went out, students were stationed at the doors of all dormitories, checking identification cards, and keeping strangers out of the resident halls. The fraternity houses were practically empty as the greeks, along with other men from the dorm and apartments, rushed to the Public Safety Building to offer assistance. Students could be found in nearly every critical position on campus.

They made every effort to help RIT and the City of Rochester. This is the type of student action of which RIT can be justly proud.

letters to the editor

Dear Editor:

As a member of the Board of Trustees of the Rochester Institute of Technology, it was indeed a refreshing experience to see the editorial which appeared in the *RIT Reporter* Friday, Oct. 15, entitled, "A Positive Year." When one reads the statements made by students in many universities, such as at Berkeley and others, which schools to a large extent have free tuition, your editorial was (indeed a real inspiration. It shows an attitude of mind and an understanding that cannot help but give hope that the general run of youth of our country is not what many of us have been concerned about recently.

My congratulations to whomever wrote the editorial, and also, for your courage in printing it. I am sure that many others had the same lift from it that I did.

I am on the Engineering Council Board at Cornell and intend to take this editorial to our meeting later this week, as an example of intelligent reasoning by at least some of the youth of our country.

Alexander M. Beebe, Chairman
 Executive and Finance Committee
 RG and E

Dear Editor:

Everywhere I have turned today I have heard the most glowing reports concerning RIT students and the way in which they pitched in to help during the blackout emergency Nov. 9. I have first-hand knowledge of some of this for I saw our students directing traffic at various intersections around our buildings as if they were professionals. They were great!

This afternoon, I received a call from Strong Memorial Hospital reporting that six of our students showed up there, equipped with flashlights, and ready to do volunteer work as called upon. While they were not needed, the hospital authorities were much impressed and deeply grateful that a group of our students had come forward to help. The hospital did not get the names of our students, but they have asked that I express their great appreciation for this thoughtful act.

I am sure our students were helpful in a hundred ways whihc will go unreported. But the instances that have come to my attention give me added reason to be proud of our students. Their conduct last evening reflected great credit on the Institute.

Alfred L. Davis, Vice President
 Development and Public Relations

Dear Editor:

The student body in general should be congratulated for their behavior Tuesday evening during the blackout. It has been reported to me that many students assisted police in directing traffic, helped local hospitals in the preparation and distribution of food, manned resuscitators, organized song fests to quell fears, and guarded the women's residence halls—just to mention a few of the many positive actions taken by students. It is a definite tribute to the quality of the student body, and you must be praised for acting in such an intelligent and mature manner.

James B. Campbell, Vice President
 Student Personnel Services

by ron antos and bill mcdonald . . .

stop the clock

Every year with the coming of rushing there are many rumors flying around the campus of how great the greeks think they are and how much they show it. Naturally this is true in the respect of personal pride which leads to the closeness of the greeks. Contrary to some of these rumors the greeks also care about what goes on in other organizations and what goes on in individuals' minds. Don't be shy in getting to know the greeks. Don't think the greeks don't care. You'd be surprised to know the total expense physically, mentally and financially of the combined greek rush programs to increase their membership. We think the greeks care very much. Just look around you and we think you'll agree.

LATEST and GREATEST:

Dimie day is back at the PT! For those of you who don't know what we are talking about—a glass of draft beer can now be purchased for 10 cents between the hours of 3 and 5:30 p.m. on Friday. . . . Will the real "Beaver Queen" stand up and take a bow.

Support: We hope all of you students are supporting the "Mail Call" for South Viet Nam. We are strongly in favor of this move and urge students to participate. Speaking of support, how about some pep rallies in support of this cause. . . . The Tech Tourney is coming Dec. 3 and 4. Rumors have it that the Tigers might go this year. . . . Speaking of basketball, watch out for the Celtics; they are on the move again.

Congratulations go out to the RIT Harriers for a fine season. . . . Is Stick a secret agent for "The Snapper"? . . . At the beginning of this year all students should have figured in their budget a slight fee of approximately \$50 for the purpose of buying raffle tickets. . . . There is no answer to last week's riddle. . . . Special concert coming up Feb. 27 at the Eastman Theatre. More news will be coming. . . . Happy Thanksgiving.

IN ATHENS:

AXD Fashion Show coming this Monday. This has always been a very nice even in the past and promises to be better this year. . . . Yes, Rock Hudson alias R.P. is finishing up his latest movie "Secretaries ala Go, Go" and it should be out by February.

Another First: This year's portrait of the year can be seen in the IFC rush booklet. Nice picture, Tom. . . . Congratulations to Karen Stocklien as SP Harvest Moon Queen.

Who shot TEP's slides? . . . The "STUD" is a GEEK hustler. Just ask Margie. . . . Our column is more powerful than you think. We stopped everybody's clock last week.

Hats off to everyone who participated in Greek Week. It was a tremendous success considering that it was only the second event of its kind here at RIT. . . . Last week's Rovin' Greek was super great. We just received word that a special request for future social membership is going to be submitted to IFC by a representative of the Taj Mahal. Besides this, they've had such a fantastic increase in population over there this summer that Uncle Sam is sending in a special agent from the Department of Birth Control. It's okay though. Urban Renewal has put their foot down in our neighborhood. They put a fence around the Taj Mahal. Then they planted grass and let that grow. Their thinking was excellent. By the end of the summer the grass grew so high that you couldn't see the Taj Mahal.

Last week's *Rporter* stated that the Ski Club was the largest social organization on campus. This is definitely not true. The Taj Mahal has us all beat by a mile. For those of you who don't understand you can find the Taj Mahal on the corner of Washington and Atkinson. Sometimes it is called the Gray Monster. IFC could do a nice community deed and paint this monster inside and out. We were worried though because once in, how many would ever find there way out?



"Hey! These are candy!"

RIT REPORTER

ROCHESTER INSTITUTE OF TECHNOLOGY

Telephone Area Code 716 LOcust 2-5780, Extension 354
 Member Associated Collegiate Press
 65 Plymouth Avenue South
 Rochester, New York 14608

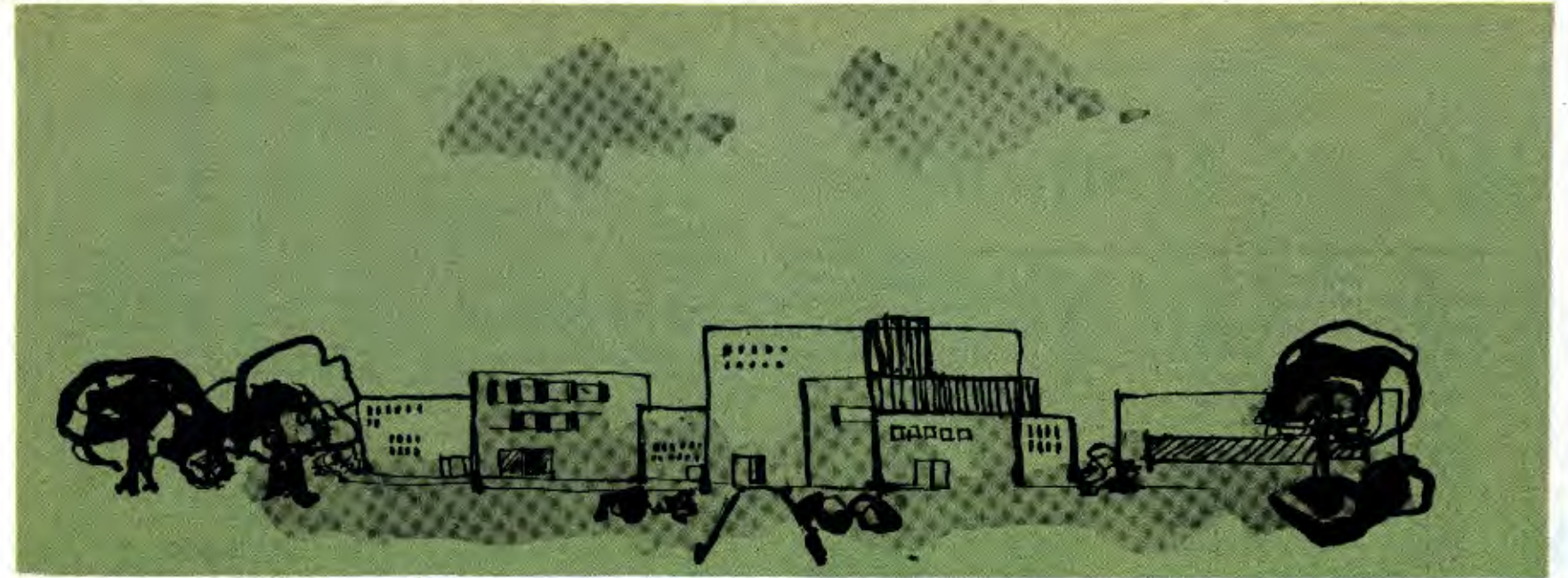
Editor-in-Chief: Earle A. Wootton
 Associate Editor: David G. Gregory
 Managing Editor: Bill Munz
 Business Manager: Jack Farrington
 News Editor: Peyton Old
 Feature Reporter: Stan Schwartz
 Production Supervisors: Wayne Johnson, Stan Richmond
 Graphic Arts Director: Gary Calderwood
 Photo Section Associate: John Reitzammer

Art Section Associate: David Folkman
 Feature Editor: Jan Meades
 Copy Editor: Danielle Donovan
 Sports Editor: Jim Castor
 Layout Editor: John Moncrief
 Advertising Manager: Wayne Jackson
 Reporters: Wayne Belleau, Richard Sullivan, Sue Denny, Bill Siegler, Dave Tuttle, Denton Orman
 Advisor: W. Frederick Craig
 Associate Advisor: Barbara M. Tompkins

1965



This is Albert, a typical RIT art student. Albert is very happy at RIT.



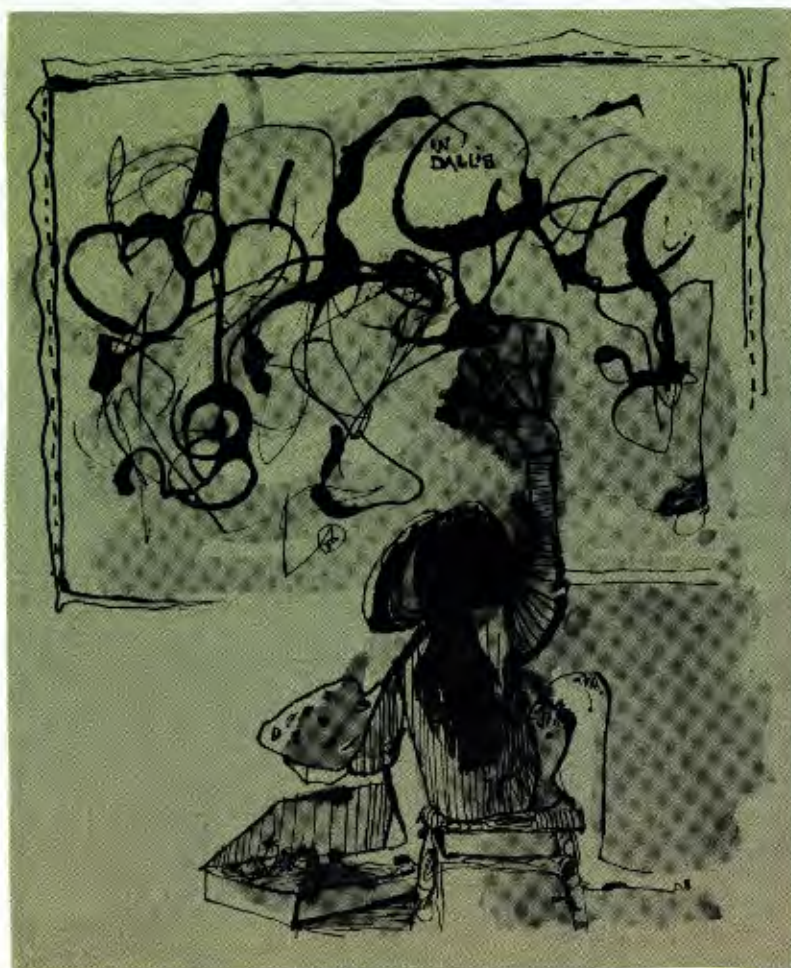
1967 This is a new campus. It is clean. Everyone is happy. ... except Albert... Dr. Ellingson has made a new rule. Art students must dress up pretty to match the new campus.



Some artists sit on the Bevier Building steps and look. There are many interesting people and things to look at.



If they are good, they can go outside to draw. There is nothing outside, except trees.



Sometimes they even work. they paint the interesting things they see every day.



and so they drew trees... and trees... and trees....

NEWS of alumni

Robert M. LaTorre (Photo '59) recently presented a three-day seminar in Alberta, Canada, entitled "The Language of Color." This was his first presentation outside the United States.

Sal A. Ferris (Pr '58) has been elected president of the Rochester Salesman's Club.



Lawrence J. Guzzetta Jr.

Lawrence J. Guzzetta Jr. (Ret '60) has been appointed Buyer of Men's Furnishings at Bullocks, Inc., in Los Angeles.

Jon Warren Formo (SAC '65) has been instrumental in founding a South Carolina Crafts organization. They are planning to exhibit at the Carolina Museum of Art.

Eric Lynn Bellmean (A and D '65) recently won first prize for "best painting in show" at the Brockport Summer Arts Festival.

Steven Lewis Rimer (Pr '65) has been appointed Graphic Arts instructor of the Warren Harding High School in Bridgeport, Conn.

Jerry Uelsmann (Photo '57) has an eight-page photographic essay in the November issue of *Popular Photography*. The article, entitled "Jerry Uelsmann . . . involved with the celebration of life" includes his interpretation of the work illustrated, a first-person report on his career at RIT and his present position as head of the photography program at the University of Florida. After receiving his BFA from the Institute he studied at the University of Indiana. He and his wife, Marilyn, recently moved into a new home in suburban Gainesville.



John A. Brodie

Second Lieutenant John A. Brodie (Bus Adm. '63) has been awarded his silver wings upon graduation from U.S. Air Force navigator training at James Connally AFB, Tex. He is being assigned to Dover AFB, Del. for flying duty. He is a member of the Military Air Training Service which provides global airlift, air rescue, and geodetic services for U.S. forces.

Theodore J. Solarek (Bus Adm '64) has been commissioned a second lieutenant in the U.S. Air Force upon graduation from OTS at Lackland AFB, Texas. He is now a member of the U.S. Air Forces in Europe, the American overseas air arm assigned to NATO.



Theodore J. Solarek

MARRIAGES

Richard G. Walsh, (Pr '65) and Carol Lee Marshall on Aug. 1.

Carol Ann Caporin (Ret' 64) and Anthony Vasile (Bus Adm '65) on Sept. 18.

Lawrence Louis Laske (Bus Adm '65) and Jacqueline Ann Downhill on Aug. 21.

Carl M. Franz (Photo '65) and Linda Sue Gray on Aug. 28.

Richard H. Francis (Elec '65) and Carol E. Brink on Aug. 28 in Rochester.

Steven J. Eisenberg (Photo '65) and Marilyn Elaine Deutsch during the summer.

Roger W. Edmondson (Pr '65) and Hedy Jean Pabsch on Aug. 28, in Phoenix, N.Y.

Peter J. VanderMallie (Bus Adm '65) and Patricia Ann Mower on Oct. 16.

John H. Bowser (Photo '65) and Kathleen Ann Morton on Aug. 28.

Charlmed D. Chesna (Ev Col '65) and Elliott Shulman on May 29 in Rochester.

James H. Rising Jr. (Mech '65) and Judith Ann White on Aug. 28.

Naomi Joyce Whiting (SAC '65) and George Edson Towner on July 31 in Warwick, R.I.

Phillip W. Schuessler (Chem '65) and Sally Marie Swan (Chem '65) on Sept. 11.

Lucia Jones (Ev Col '65) and Robert B. Crawford on Aug. 28, in Brighton.

John T. Deary (Ret '62) and Mary Catherine Feeney on Sept. 11, at Hasbrouck Heights, N.J.

BIRTHS

Mr. and Mrs. Jarry Bazinet announce the birth of a second son, Dean Gerald, on July 1. Bazinet is a 1965 graduate of the College of Applied Science and is an engineer with the Aerojet General Corp. in Sacramento, Calif.

Mr. and Mrs. James Erklenz announce the birth of a daughter, Lisa, on Nov. 6. He is a graduate of the School of Business Administration, 1965 and is currently teaching at Rochester Business Institute.

No Reporter next week

letters to the editor

Dear Editor:

The word *apathy* appeared in two articles of your Nov. 12 issue. In Miss Meades' thought provoking column, the lead sentence was: "Are you *apathetic*?" Monsieurs Antos and McDonald stated in their enlightening column: "Maybe if there was a *Reporter* distribution box up there (Main Street cafeteria) the students *apathy* would improve. . . . Does anyone know the meaning of the word "*apathy*". . . ." I would like to express my opinion on *apathy* at RIT.

Unfortunately, like a chain, a school, organization, or group is only as strong as its weakest component. Apparently the writers mentioned have encountered the weakest members of the RIT student body. What about its strongest members?

Let's first take a look at what RIT students did during the power failure. I am told that approximately 90 students went to the Public Safety Building and offered their services. They ran errands, assisted at local hospitals, were prepared to go into action in case of panic and riots, directed traffic, and simply acted as "Good Samaritans." Is this *apathetic*?

There also appeared in your paper an article about RIT's pep band. These students don't seem to be *apathetic*.

I see you need sports and news writers. You had two full pages of sports news plus a soccer center-spread in the Nov. 12 issue. Who was responsible for all this sports display? Is the sports editor doing it all himself?

Somehow you manage to have a full front page of news each week. Who is writing these articles? I notice by-lines, but they appear to be the same every week. Are these the only writers you have?

Twenty-three students got their names on front page for their work in Newman Club, Student Christian Front, and Student Senate. Surely these people aren't *apathetic*.

Is the RIT student body *apathetic*? No, only its weakest members are.

John Moncrief (Pr 2)

Dear Editor:

May I inject a discordant note among the squeals of the smoking clan of the Institute. A special Student Senate committee has initiated a petition "to discover the student's views on an old issue, cigarette machines". (*Reporter*, Nov. 5). The petition itself as quoted, says: "We the students of Rochester Institute of Technology, in order to make known our opinion, do hereby sign our names in favor of the reinstallation of cigarette machines on campus."

Student Senate is seriously misrepresenting me and a considerable number of non-smokers when the petition is put forth, ostensibly allowing no chance for non-assent to their request for cigarette convenience. I desire the opportunity to favor the removal of cigarette machines as de-

ecided by the administration. I strongly resent the implications of incompetence and continual sniping at the administration by a number of children who are given the freedom to conduct the procedures of the student body yet would be incapacitated if the responsibility in such matters accompanied their decisions.

The major rallying cry is "Who is the Administration to do such a thing as banning cigarettes?" In my view they are a group of mature administrators and educators with many years experience in baby-sitting and wiping of noses of a mass of RIT students. Many students will reflect at their later periods here and afterward how childish and immature were many of their actions and how fortunate that they were not exposed at the time. Many will never realize their immaturity and will lead their lives in a state of never-never land where someone will always be found to pat them gently on the back and say everything will be all right. I believe that very many of us (the mysterious non-smoker—how can that be?) consider the actions of our leaders in this petition to be on the same level as crying for the candy taken from a baby.

I would like to state a viewpoint that may be inconceivable to an individual who smokes. I consider cigarettes and smoking in general as very obnoxious and often repelling. The use of tobacco is in no way a physical nor mental need and, associated with the stains and odor of staleness, is very much of a social liability.

The height of rudeness and boorishness, in my consideration, is for a smoker to impose his habit upon an individual who is either not receptive or is actively repelled by the habit. In my estimation, there has never been put forth a valid justification of smoking. There is no other conclusion to be made other than the individual is consciously or unconsciously rude and inconsiderate.

In a few words, there are many people in this world who think that smoking is a distinctly "unmarvelous" thing and that they would suffer no loss and gain much if every cigarette were to disappear from this earth, and especially, our esteemed Senate notwithstanding—the RIT campus.

All right, Council of Smokers, rationalize your way around this. Present your petition to me and I am liable to borrow a lighter and set it afire.

Harvey Bailey (Photo 4)

FACTS DON'T LIE?

Facts do not lie. But according to the current population report by the Bureau of Census of April 1965, there are 44,755,000 married women and 43,739,000 married men in the United States.

Someone's not reporting!

Attention SENIOR & GRADUATE MEN Students—U.S. Citizens
NEEDING NOMINAL FINANCIAL HELP TO COMPLETE THEIR EDUCATION THIS
ACADEMIC YEAR — AND THEN COMMENCE WORK — COSIGNERS REQUIRED.
SEND TRANSCRIPT AND FULL DETAILS OF YOUR PLANS AND REQUIREMENTS TO
STEVENS BROS. FOUNDATION, INC.
610-612 ENDICOTT BLDG., ST. PAUL 1, MINN. A NON-PROFIT CORP.
UNDERGRADS, CLIP AND SAVE

by jim castor

Tiger Tracks

Do you have a special gripe towards the athletic department and its policies? In the past, questions have been raised as to the reasons for having an athletic fee, not having athletic scholarships, not having swimming and football teams, and other such magnanimous proposals. Since the four most grumbled-over topics at RIT seem to be housing, food, professors, and athletic department, we are going to try and find some concrete answers to the whys and why-nots of questions concerning the last category in the coming weeks and months.

First, however, a need must be shown for the answers to be of any real value. Finding facts and answering questions is useless if no one shows any interest in the results. I ask you: Do you want to know why you are required to pay an athletic fee? Do you want to know why RIT has never fielded a grid team? Do you want to know why there are no athletic scholarships given at RIT?

I would like to think that many of you are concerned about these and other questions that have been asked and will continue to be asked as long as there is interest in our athletic program. Now is the time to make your questions known. If sufficient interest is shown, I will use this column much of the time for airing the facts and fallacies of our sports program. Kindly let me know, through letters, notes, or personal conversations, just what your questions may be. Hopefully, we'll uncover some pertinent information that will benefit everyone.

Jackson posters on display in RIT library Nov. 15-25

A set of posters by Billy Morrow Jackson, professor of art at the University of Illinois, will be displayed in the RIT Library Nov. 15-25.

Social fraternity

(Continued from page 1)
of past rulings at RIT to help in their decisions.

Some 200 cigarette machine petitions circulating about campus will be returned to Gary Proud (Bus Adm 4) for final tabulation at the next Senate meeting.

Senators are keenly interested as to the outcome, as this is the first test to see if the student body will support their representatives' first stand to demonstrate the disputed students' rights. Immediate action is wanted to clear up a two-year-old issue.

Gregory to headline

(Continued from page 1)
demic standards and increased student responsibility. While education is our main objective, the social aspect of our Institute is not to be overlooked, and the initiation of quality entertainment is a vital step toward our ultimate ideals. Evolving from a sense of individual pride, this step can greatly accelerate a total Institute movement in that direction."

Yule cards

(Continued from page 1)
be circulated first within the city to local citizens who have friends and relatives in Viet Nam, and then overseas to be distributed among the fighting men.

Ray Baker, Vice President of Student Association, commented, "The student body has shown a great degree of enthusiasm for this project."



RIT HOCKEY TEAM prepares for first meet of the season December 5 against an always tough Oswego State squad. (Sieglar)

Oswego names Rivas to all-opponent team

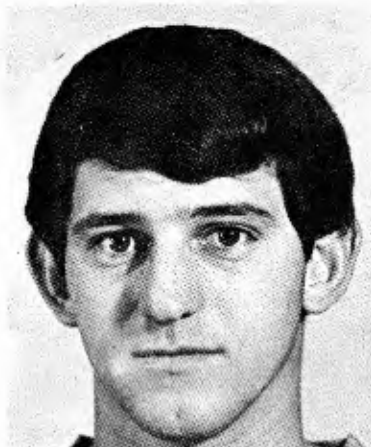
Jorge Rivas, outstanding center-forward on the RIT soccer team, has been named to the Oswego State All-

Opponent soccer team for the 1965 season.

Rivas scored five goals against the Lakers to carry RIT to a 5-4 overtime victory, setting an RIT single game scoring record in the process. This was the most goals scored against Oswego by any one opponent this season.

Besides Rivas, Sandor Szabo (Ithaca College) was named to the team, as well as Tom Allen (Buffalo State), goalie; William Doon (New Paltz), right fullback; Robert Spadoni (New Paltz), left fullback; Joe Faccioli (New Paltz), right halfback; Dale Comfort (Potsdam), left halfback; Jeff Coles (Brockport), center halfback; Jim Mihalko (Plattsburgh), right wing; Janos Benedek (Ithaca), left inside; and Solomon Iyasere (New Paltz) left wing.

athlete of the week



Tom Baker

Defense was definitely the outstanding feature of this year's soccer team, and a stalwart defenseman, Tom Baker, is this week's Athlete of the Week.

Baker, a sophomore, was a big factor in maintaining RIT's stiff defense. Playing from a fullback position, he was extremely adept at pursuing an opponent, taking the ball away, and passing it back downfield to his teammates. His fine play stopped many scoring threats throughout the year.

He makes his hometown in Peru, near Plattsburgh. A long-time sports enthusiast, Baker lettered in football, basketball, baseball, and skiing during high school. Besides soccer at RIT, he plays varsity basketball and baseball.

Typewriters purchased for use in RIT library

Three typewriters were recently purchased for student use in the RIT Library. Students may use them during regular library hours.

Typewriters are located at the front of the library by the key punch machines.

REGARFUS' words of wisdom:



"How to have most fun with college boys: don't date them!"

'Grateful for What' is chapel service topic on Nov. 21

"Grateful for What?" is the topic chosen by Dr. Fred E. Luchs for the RIT Chapel service Sunday, November 21 at 11 a.m.

The two sermons which were delivered a week and two weeks ago, "Can You Fight?" and "Can You Live with People?" have caused a stir at Student Christian Fellowship meetings. This next sermon should be just as thought provoking.

A student at college is immediately caught up in the struggle for three things: he tries to find his God, his girl, and his job.

Mrs. Luch's Bible study group will meet at 10:15. Male students are especially urged to come, because presently, it is an all girl class. Bring your Bible. Mrs. Luch's will discuss Psalm 104.

ALAS POOR YORICK, HE COULD HAVE MADE IT WITH CLIFF'S NOTES



THE LETTERMEN

in concert

America's Most Popular Campus Attraction



AUDITORIUM THEATRE
875 E. Main Street—Rochester

Wednesday, November 24
at 8:15 p.m.

Tickets: \$2.50, \$3.00, \$3.50, \$4.00
Box Office Now Open

HAMLET

isn't hard when you let Cliff's Notes be your guide. Cliff's Notes expertly summarize and explain the plot and characters of more than 125 major plays and novels — including Shakespeare's works. Improve your understanding — and your grades. Call on Cliff's Notes for help in any literature course.

125 Titles in all — among them these favorites:

Hamlet • Macbeth • Scarlet Letter • Tale of Two Cities • Moby Dick • Return of the Native • The Odyssey • Julius Caesar • Crime and Punishment • The Iliad • Great Expectations • Huckleberry Finn • King Henry IV Part I • Wuthering Heights • King Lear • Pride and Prejudice • Lord Jim • Othello • Gulliver's Travels • Lord of the Flies

\$1 at your bookseller or write:

Cliff's Notes

CLIFF'S NOTES, INC.
Bethany Station, Lincoln, Nebr. 68505

*Alpha
Kappa
Delta*

Prelude
to a
Holiday

November 22

8:15 p.m. Admission \$1.00

Ritter-Clark Gymnasium

Fashions by McCurdy's

Rochester Institute of Technology